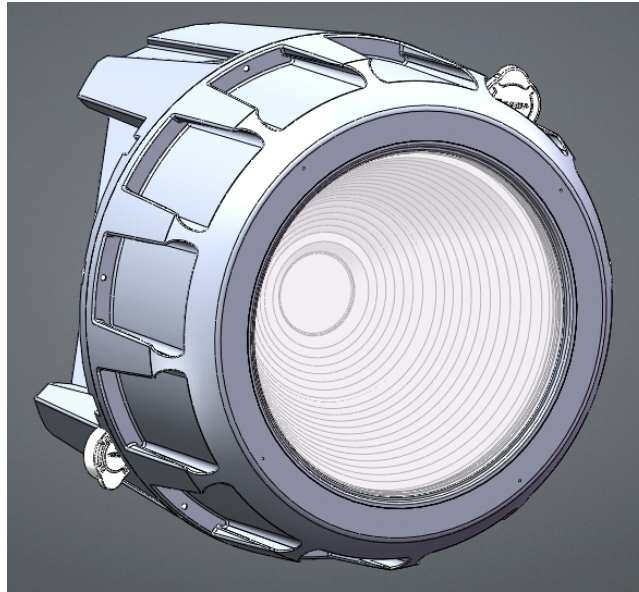




LED Flood Light

TL-LT616A



Feature

- *Color temperature adjustment system: With color temperature adjustment system, linear color temperature adjustment can meet the needs of different scenes and atmospheres
- *Color mixing system: RGBW independent control, creating infinite dynamics and infinite color changes through RGBW
- *Dimming: Support 0-100% linear dimming to meet the brightness requirements in different scenes
- *Strobe: Support 0-25Hz electronic strobe, built-in pulse strobe effect, adding dynamic and rhythmic feeling
- *Over-temperature protection function: Built-in NTC temperature control function, when the LED is overheated, the output power of the LED is intelligently reduced to ensure the service life of the LED
- *Working mode: supports two working modes, silent mode and normal mode can be selected according to different usage scenarios
- *Splicing function: Multiple lamps can be spliced with optional splicing accessories for free splicing in horizontal, vertical, hexagonal shapes, etc., allowing you to DIY stage shapes anytime and anywhere

Specification

Input voltage	AC 110-240V 50/60Hz, 240W
Light source	200W RGBW LED
Life expectancy	50000H
Color temperature	2100-10000K
Beam angle	25° (optional 40°)
Light spot angle	45° (optional 80°)
Control method	Comply with international standard DMX512 signal control protocol, 3-core DMX512 signal interface, support RDM protocol and program online update function; (optional: Art-net Ethernet data interface)
Aisle	4/10CH
Lighting material	Die-cast aluminum alloy chassis
Protection level	Ip67
Working temperature	-20°C ~ 45°C
Lamp size (L×W×H)	217×217×217mm
Packing size (L×W×H)	550×280×340mm
Gross weight	9.8kg(2PCS)
Net weight	3.7kg