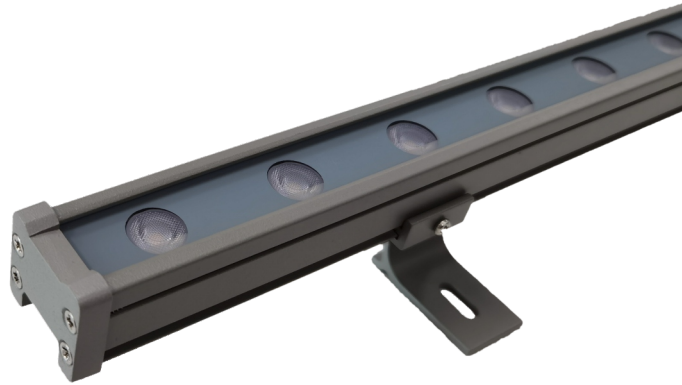




LED Wall Washer

TL-LH1010



Description

The wall washer is suitable for panoramic floodlighting of internal and external walls such as government lighting projects, commercial places, stages, conference rooms, display lights, ancient buildings, cultural squares, overpasses, building exterior walls, architectural landmarks, etc. It is also applicable to landscape buildings, outdoor squares and so on.

Features

- * Simple appearance design, economical and practical structure;
- * The fixture has high luminous uniformity and brightness;
- * The light projection angle and position are adjustable, making it always in the best state for the most satisfactory lighting effects.
- * Built-in constant current driving circuit, allowing it to maintain efficient illumination. It operates stably over a wide voltage range, improving surge protection capability and avoiding flickering of the lights caused by changes in the external power supply voltage. During the process of connecting the lights in series, it ensures consistent brightness between the first and last light fixtures.

Specifications

Input voltage/power	DC24V/24W
Light source	LUMILEDS/24PCS
Beam angle	30° (45°, 60°, 20*45° optional)
Color temperature	3000K (1900K, 2100K, 4000K, 5700K optional)
Light effect	≥80lm/W
Color rendering index	Ra≥80
Color tolerance	SDCM≤5
Light source life	50000H
Control method	ON/OFF
IK Class	IK08
IP Class	IP67
Shell material	Aluminum + tempered glass
Shell color	Sand gray
Installation method	Bracket screws
Product size (L×W×H)	1000*34*69mm
Packaging size (L×W×H)	1070*310*200mm
Net weight/Gross weight	0.9KG/15.5.KG (15PCS/box)
Remark	Light baffle optional
Working temperature	-20 C ~ 45 C