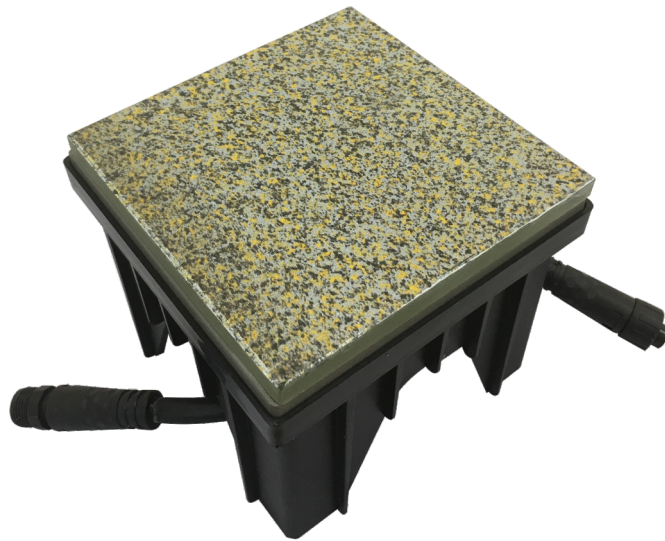




LED Underground Light

TL-LH6131



Description

It is used for the lighting of squares, streets, parks, landscape avenues, green belts, etc.

Features

- * Reasonable heat dissipation design enables the heat of the LED to be quickly conducted through the light structure and ensures its luminous efficiency and service lifespan;
- * The flat glass and stainless steel surface cover are perfectly seamless to avoid dust deposits;
- * 6063 aviation aluminum extrusion fixture, surface electrostatic spraying treatment, 316 wire-drawing stainless steel surface cover, and ADC12 die-casting aluminum rear cover;
- * 10mm ultra-white tempered glass, with seismic and impact protection grade of IK10, and strong load-bearing capacity.

Specifications

Model	TL-LH6131
Input voltage/power	DC24V/50Hz/1.5W
Number of LED lamp bead/ light source	Epistar/12PCS
Beam angle	120°
Color temperature	RGB
Control method	DMX512
Installation method	Embedded
IP level	IP65
Fixture size (L×W×H)	104×104×85mm
Certificate	CE/ROHS