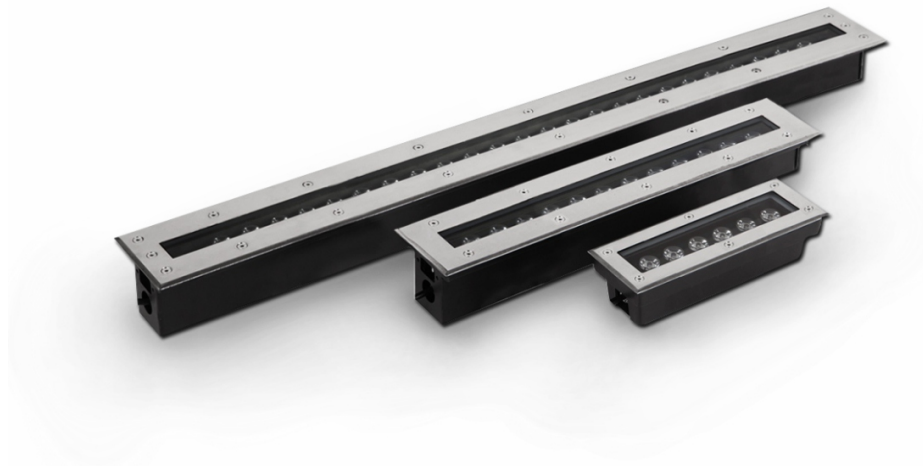




LED Underground Light

TL-LH6106



Description

LED underground light is widely used in shopping malls, parking lots, green belts, park spots, residential quarters, urban sculptures, pedestrian streets, building steps and other places. It is buried in the ground and mainly used for decoration or indication lighting.

Features

- * Reasonable heat dissipation design enables the heat of the LED to be quickly conducted through the light structure and ensures its luminous efficiency and service lifespan;
- * The flat glass and stainless steel surface cover are perfectly seamless to avoid dust deposits;
- * The low-gradient surface cover allows pedestrians to walk without obstacles and prevents them from falling;
- * 6063 aviation aluminum extrusion fixture, surface electrostatic spraying treatment, 316 wire-drawing stainless steel surface cover, and ADC12 die-casting aluminum rear cover;
- * 10mm ultra-white tempered glass, with seismic and impact protection grade of IK10, and strong load-bearing capacity.

Specifications

| | |
|---------------------------------------|----------------------------|
| Model | TL-LH6106 |
| Input voltage/power | DC24V/9W |
| Number of LED lamp bead/ light source | Epistar/10PCS |
| Beam angle | 15° (30, 45, 60° optional) |
| Color temperature | RGB |
| Control method | RGB/2 bands |
| Installation method | Embedded |
| IP level | IP67 |
| Fixture size (L×W×H) | 300×115×100mm |
| Certificate | CE/ROHS |