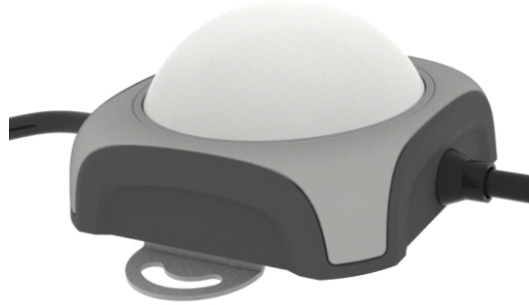




LED Point Light

TL-LH4106



Description

LED point light is a new type of bright decorative LED light. It adopts built-in LED cold light. LED point light can emit different colors as needed. LED point light can be randomly programmed to control multiple synchronous changes, and can achieve synchronous seven colors, jumping, scanning, flowing water and other full-color change effects. It can also form a dot matrix screen with multiple point light sources to change various pictures, characters, animation effects, etc.

Feature

- *Original appearance design, the overall appearance is simple, sharp, exquisite and beautiful, structural waterproof design;
- *High gray, high refresh rate, flicker-free design, with vibrant colors
- *The product emits light evenly and softly, without dark areas;
- *Built-in constant current driving circuit: ensures efficient lighting; operates stably across a wide voltage range, enhancing surge resistance and preventing flickering when external power supply voltage fluctuates; ensures consistent brightness between the first and last fixtures when lights are connected in a series

Specification

Input voltage/power	DC24V/10W
Light source	EPISTAR/12PCS
Beam angle	120°
Color temperature	RGBW(W:3000K)
Light effect	≥30lm/W
Color rendering index	Ra≥80
Color tolerance	SDCM≤5
Light source life	50000H
Control method	DMX512
IK grade	Ik08
IP rating	Ip65
Shell material	Aluminum + milky white PC cover
Appearance color	Sand gray
Installation	Screw fixing
Product size (L×W×H)	122*94*54mm
Packing size (L×W×H)	535*405*255mm
Net weight/gross weight	0.3kg/16kg(48PCS)
Operating temperature	-20°C ~ 45°C