



# IP Network PA System Software V3.0

## T-6700R



Server software <interface>

### Description

PA system management and control software, which is installed in broadcast control center or computer, is a comprehensive management platform for data exchange, system operation and function operation.

### Feature

- \* Software is the core of the whole system, support all terminals and the basic parameters configuration, responsible for audio on demand service, task processing and terminal management and authority management functions.
- \* Manage program resources, provide timing broadcast and real-time VOD services for all terminals, response the request of each terminal program broadcast, to provide data interface services for the audio workstations.
- \* Support up to 1000 unicast task or program transmission, for multiple servers distributed deployment and server clusters.
- \* Support customize terminal name, unlimited grouping, unlimited timed task, and unlimited timed grouping, support unlimited audio collection and timed playing, one key calling and playing.
- \* Support control management of multiple users and different level, unlimited monitoring terminal, multitasking real-time monitor, unlimited environment monitoring function, program library and unlimited file folder management.
- \* Built-in affiliated terminal management functions, the meeting schedule function, intelligent recognition of task reentry, geometric ratio lower code rate.
- \* Support program timed offline play tasks, and remote manual and intelligent control terminal power supply.
- \* Support WIFI on demand and on demand of remote broadcast terminal.
- \* Support text broadcast, and voice selection to adjust the speech rate.
- \* Support unattended work all day, data protection without power supply, automatic discovery and bind terminal, customize heart data, online and offline remind, bubble popup window.
- \* Support for embedded development of the third-party platform, provide standard MFC dynamic link library, realizing platform to integrate with other systems (such as building visit system, monitor video systems, etc.)
- \* Support arbitrary monomer, group calls, play music, timing, chime function, the remote wireless remote control, and the intelligent combination keys, the remote volume control, broadcasting, select function.
- \* Support timed tasks, timed ringing schemes, export, modify and import functions. Support automatic switching function of timed ringing scheme.
- \* Support automatic search for IP terminal address and remote firmware upgrade for the terminal.
- \* Support time-based duty, hosting function of central terminal to designated terminal, and automatic generation of system information report.
- \* Support automatic starting function without login in and logout, does affect the function such as chime run regularly. Support background sound recording, remote storage, and intelligent recognition to start recording.
- \* Support digital audio intelligent identification, automatic coding, damaged file identification, professional studio management software, the temporary task to save and edit again.
- \* Support customize shortcuts of terminal zone, maximum support more than five tasks.
- \* Support virtual terminal access, and portable mobile client operation.
- \* Support network microphone call transfer function.
- \* Support system parameters, ring scheme data backup/restore function.
- \* Support fire linkage of the whole area and zones, support fire N±N mode, and support the mixing of manual alarm and digital alarm.
- \* Support unified management of terminal password, authorization scope management, 10 level priority management, and easy automatic authorization.
- \* Support PSTN broadcast, built-in voice in Chinese, support cellphone, fixed telephone, foreign phone broadcast, compatible with access to the global telecommunication system.
- \* Support text and voice broadcast, Mobile or Unicom specified number or public number to send message.
- \* Support task management, session management, hardware management, user management, authorization management, media management, and network adaptive management.
- \* Support log query, filter, retrieval and output, and terminal startup, play, management, control, on and off, timing, trigger, fire control, call, intercom, alarm, remote control, and torn down.
- \* Adopt standard selected installed modules, software has system server software, relay server software, remote client software, broadcast client software, fire alarm software, wireless remote control software and phone radio software, etc; Support customer customize installation, to reduce the resource usage of the system and improve the efficiency of the system. It is the most flexible radio software in the industry.
- \* Adopt the background system service, it is the enterprise standard server work mode, system can run automatically when it turns on. Comparing with software run in the interface, the software has higher stability and reliability.
- \* Windows service mode, support Win98 ~ Win8.1 system platform, built-in seven system services, and support system watchdog.
- \* System is compatible with any network structure such as routers, switches, bridge gateways, Modem, Internet, 2G, 3G, 4G, multicast, unicast, etc.



# IP Network PA System Software V3.0

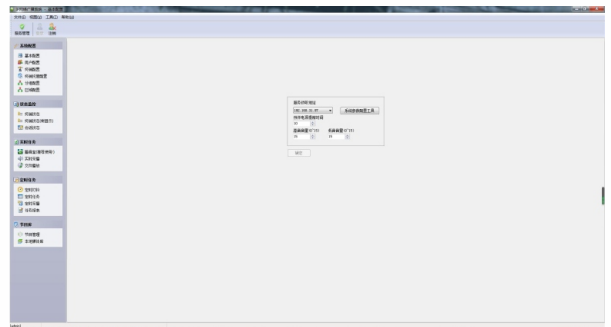
## T-6700R

Remote client software (sub-control workstation software) <Interface>



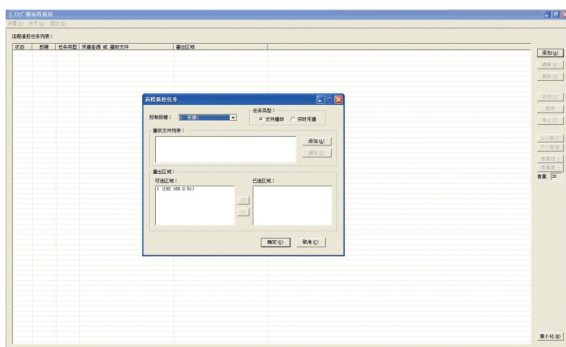
The sub-control workstation software uses the IP network (local area network, wide area network) to log in to the server remotely, and realizes the functions of remote audio real-time acquisition and broadcast, program library management, program timing programming and broadcast, and speech broadcast.

Wireless remote control software <Interface>



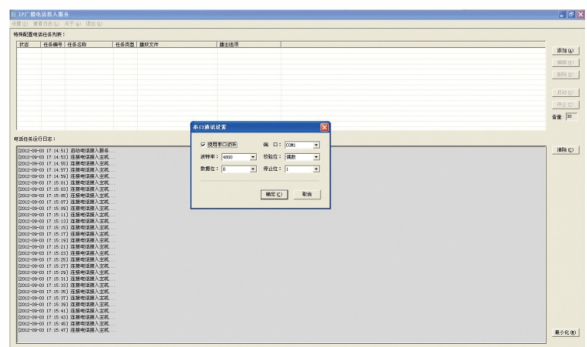
The wireless remote control software receives and processes the signal of the wireless remote control kit, and realizes the remote control of the main control room program broadcast through preset settings; built-in music file playback module and audio acquisition module, which can play pre-stored music files or collect external programs audio.

Wireless remote control software <Interface>



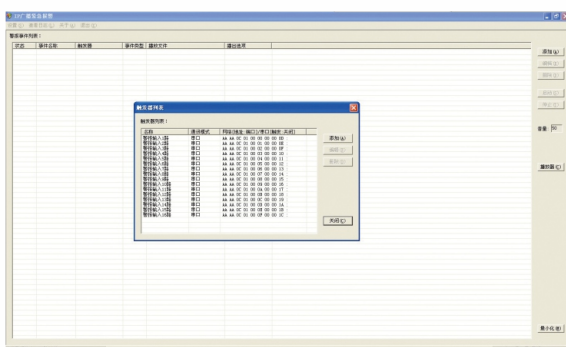
The wireless remote control software receives and processes the signal of the wireless remote control kit, and realizes the remote control of the main control room program broadcast through preset settings; built-in music file playback module and audio acquisition module, which can play pre-stored music files or collect external programs audio.

Telephone broadcast software <Interface>



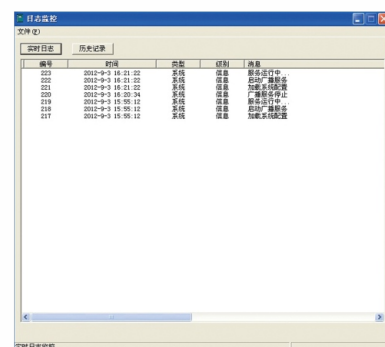
Telephone broadcast software receives and processes the outside telephone signals, and realizes the telephone broadcast function according to the preset settings.

Fire linkage software <Interface>



The broadcast fire linkage software receives and processes the signals of the fire-fighting center, and sends out alarm voice according to the preset settings; it can support various alarm modes such as adjacent layer, whole area alarm, and zone alarm; built-in alarm voice playback module and acquisition module can play the pre-stored alarm voice or collect external alarm voice.

Log monitoring software <Interface>



The log monitoring software records and monitors broadcast calls, music playback, intercom, and alarm information during the use of the system. The information can be automatically written into the server log, and be queried in the software at any time.