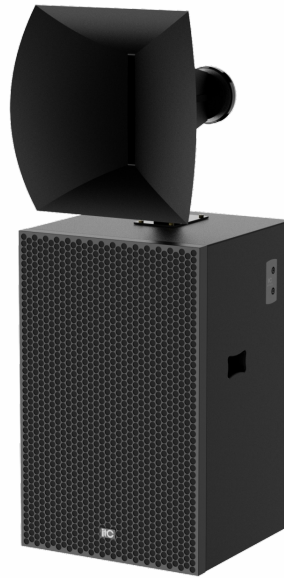


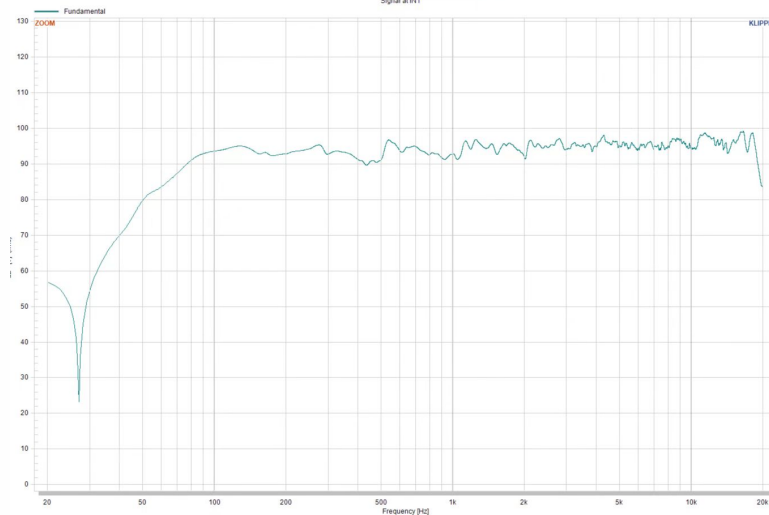


Professional Full Range Speaker

KF-Y215



Fundamental + Harmonic distortion components
Signal at IN1



Description

It is used in public cinemas, private cinemas and various high-end occasions.

Features

- * Adopt two 15-inch woofers and a 3-inch tweeter.
- * The cabinet is made of 18mm medium density fiberboard, and adopts water-based paint treatment, novel appearance design, high-grade and wear-resistant.
- * The tweeter is flexible and adjustable to easily adapt to different listening environments; it provides natural timbre, and huge dynamics, bringing the audience an immersive experience.
- * The mesh cover adopts the cotton attachment process to prevent dust or liquid from entering, so as to protect the speaker and prolong the service lifespan.
- * Professional speaker sockets and plugs with good electrical characteristics.

Specification:

Model	KF-Y215
Rated power	900W
Peak power	3600W
Nominal impedance	4Ω
Frequency range	40Hz-18.5KHz
Sensitivity	98dB (1M/1W)
Maximum SPL (rated/peak)	128dB/134dB
Woofers	15" woofer × 2
Tweeter	3" tweeter × 1
Coverage angle (-6dB)	100°(H) 75°(V)
Net weight	78.65kg
Dimension (H×W×D)	1630×600×680mm