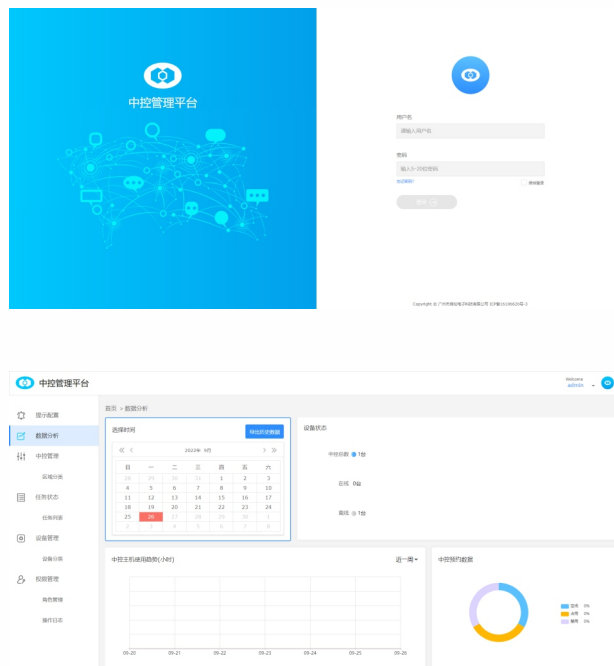




New Central Control Editing Software V1.0

TS-9100NR



Description

The cloud central control management platform is the management platform of the central control Internet equipment. It integrates functions such as prompt configuration, data analysis, central control management, task management, equipment management, permission management, and system management. It is a more user-friendly intelligent large-scale network cloud management platform and can realize the management of central control equipment at any time and anywhere.

Feature

- * Adopt B/S structure, the equipment used in this platform adopts TCP/IP communication mode, the terminal point can be expanded infinitely, and can be distributed in any network that can be interconnected without separate wiring.
- * Centrally manage the central control equipment and display the equipment status of each area in real time.
- * View the occupied, disabled, and online status of the central control in each area in real time, and initiate task reservations for the online central control.
- * Centrally manage and control the peripheral equipment managed by the central control, and support equipment failure reporting operations.
- * Support classification management of peripheral equipment, central control area management.
- * Support data analysis and management, check the online and offline number of central control equipment according to time, and check the usage trend by week/month/year and the summary data of task appointments for the day.
- * User permission management, add roles and accounts, and assign the management scope of users.
- * Event reminder, the platform can automatically send the information to the relevant person in charge after configuring the information for each event.