



Guangzhou Baolun Electronics Co., Ltd

Add: Building A13-1 Yiku Industrial Park, The Hills, Dongyi Road Panyu District Guangzhou China 511492

Tel: +86-20-34549655, 84593197, 31104730, 31104729 Fax: +86-20-84548799

Website: www.itctech.com.cn E-mail: info@itc-pa.com.cn



Emergency PA System

Catalogue V.24

* Specifications are subject to change without notice.



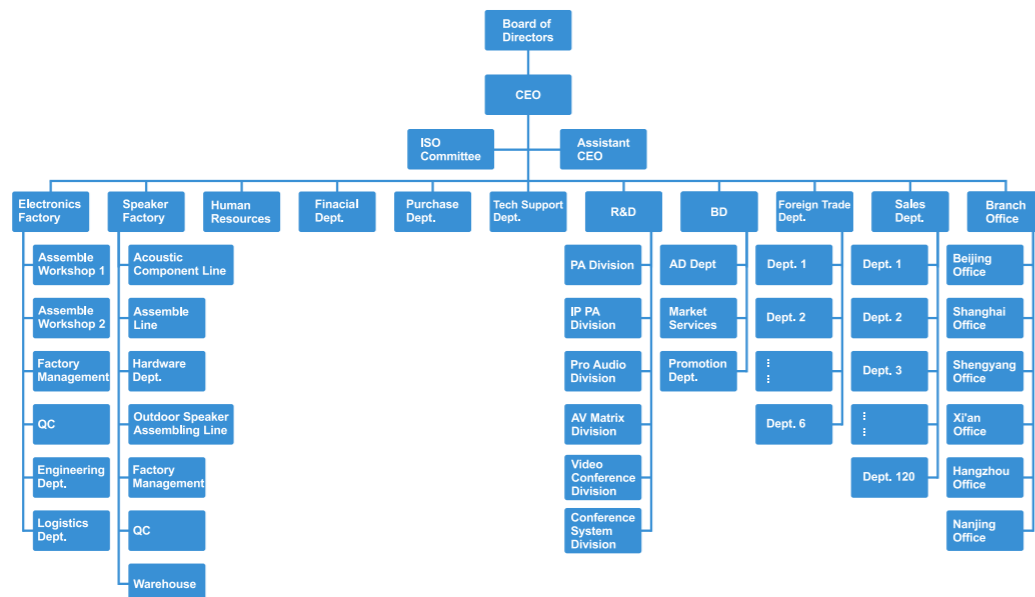
Company Introduction

Guangdong Baolun Electronics Co., LTD. (ITC) was established in 1993, located in Panyu district of Guangzhou. ITC is the No.1 and the largest integrated supplier of audiovisual & lighting systems, integrating R&D, production, sales and service together in China for more than 30 years. ITC owns 4 office buildings, 6 R&D centers and 5 factories. There is also an industry-leading intelligent manufacturing industrial park of over 300,000 square meters under construction, which is expected to be put into operation by the end of 2023. We have 1200 R&D engineers, 2000 pre-sales and after-sales technicians, 142 sales departments, all totally more than 6000 employees.

ITC can provide integrated solution from PA system, IP intercom system, Voice evacuation system, HD video conference system, 5G digital conference, Paperless conference, Interpretation system, Central control system, Professional sound system, LED screen, Stage light & Architectural light, etc. We are the official supplier for important events, including 2008 Beijing Olympic Games, 2010 Shanghai World Expo, 2010 Guangzhou Asian Games, 2016 Hangzhou G20 Summit, 2016 Turkey expo, 2022 Beijing Winter Olympics, India subway, USA chain shops, Guyana national conference, Uzbekistan national defense conference, Five Nigeria national airport, CBE Ethiopia bankOur worldwide successful projects are more than 1.5 million cases, and itc products have been exported to more than 100 countries around the world. All of our products are developed and manufactured by ourselves. Our products are compliant with CE, RoHS, EN54, UL, CCC, NOM certificate.

ITC possesses more than 3000 intellectual properties, including appearance patents, software copyrights, utility model patents and invention patents, and has won the honorary titles of "Quality Product", "Famous Brand" and "Most Competitive Brand" for many years. ITC is the "High-tech Enterprise" in China.

Company Organization



Our Production Lines

A group of highest technology equipments are used to strengthen the reliability and output capacity: SMT machine, reflow oven & numerical control cutting machine. 95% PCB of the equipments are made by SMT machine to ensure quality consistency and higher reliability. The numerical cutting machines enhance the equipments in elaborate & elegant level. A comprehensive process of tests are be involved: drop test, vibration test, aging, Hipot & RoHS test.

Certificates:

CCC, ISO9001, CE & RoHS, IEC60914. Parts of our product are complied with certificates: CB, SASO, ETL, UL, FCC, EN54-16 and EN54-24. Parts of loudspeakers are certified by waterproof, dustproof, fire-proof & explosion-proof.



COMPANY HISTORY



Year 1993

ITC was founded in Guangzhou, regarded as pioneer of Digital Public Address System in China.

Year 1995

ITC successfully registered trademark ITC in China.

Year 1998

The first full-intelligent PA system was successfully developed and launched to the market.

Year 2000

ITC set up 8 sales subsidiaries and technical assistance centers in Guangzhou, Beijing, Shanghai, Hangzhou, Nanjing, Xi'an, Shenyang and Chengdu. ITC also established proxy services agencies in 48 provinces all over China.

Year 2001

The first digital network PA system was successfully developed and launched to market.

Year 2002

Due to speed business expansion, ITC set up numerous large production plants in Guangzhou. The whole company broadened to six large plates: four production plants + marketing and logistics center + R & D center; totally more than 800 manufacturing workers.

Year 2003

ITC developed full-digital IP PA system; became the world's first IP PA R & D manufacturer. In the same year a full range of products passed quality inspection, 3C, CE, RoHS and other domestic and foreign certification.

Year 2004

For successive years, ITC was awarded as "The Most Competitive Brand" and "Top Ten PA Brand" by domestic renowned media.

Year 2005

In order to meet the needs of global strategy, ITC had registered in 35 countries "ITC" trademark, and collaborated with 56 high-quality foreign strategic partners.

Year 2006

ITC was awarded as "Intelligent Building Quality Products," "Intelligent Building Leading Brands" as etc by China Intelligent Building Industry Association. There' s no replacement in the professional field.

Year 2007

The first most advanced Fire Alarm Voice Evacuation System was successfully developed. Till the end of 2007, ITC had won totally 12 core technology and design patents.

Year 2008

ITC successfully marched into 2008 Beijing Olympic games: the Olympic Forest Park, Capital Stadium, Beijing Industry University Gymnasium, and the Olympic Media MCI sign Center and other key Olympic venues.

Year 2009

ITC successfully marched into the Shanghai World Expo venues including Oman, Ireland Museum, Museum of Turkmenistan, Pakistan, and Iran and so on. In the same year, she went into Asia's largest railway station (South Station in Guangzhou), Beijing Subway, Beijing-Tianjin inter-city Express and other famous projects.

Year 2010

ITC successfully marched into 2010 Guangzhou Asian Games Venues including Gymnasium, NBA Stadiums, Swimming Pool, Bicycle Roller Skating Center, the Athletes Village, Main Press Centre, Media Village, Technical Officials Village and other logistics service area. ITC cooperated with numerous well-known enterprises the following eminent projects: the Polish National Central Banks, the International Financial Building of Azerbaijan, the Romanian Five-star Hotel, the Dubai Seven Star Hotel, the Singapore Racecourse, the USA Florida Intercontinental Hotel, the University of Toronto, the National Museum of Istanbul, the Turkey Istanbul High School, the London Art Galleries and so on.

Year 2011

ITC successfully installed Network Audio System for Shenzhen 2011 World Universiade Olympic Games. Move into new 20,000 square meters manufacturing plant, SMT machine, digital PC controlled punching machine been imported. Cobranet network system and Linux Network Audio System have been launched. Launched new digital conference system.

Year 2012

ITC launched its Cloud-based HD Video Conference System to realize the conference meeting face to face by video without geographical limitation.

Year 2015

ITC installed IP PA & Intercom System in the Subway Center of Chanakyapuri New Delhi India.

Year 2016

ITC installed Evacuation Voice Alarm Public Address System and IP Network Intercom System to EXPO 2016 Antalya in Turkey.

Year 2017

ITC LED Screen, Stage lighting, architecture lighting factory established. ITC Turn-key solution applied to UNASUR Building , Bolivia.

Year 2018

ITC conference system used in the United Nations Convention. Large conference system applied to Ethiopia Afar National Regional State Finance & Economic Development Bureau, Africa.

Year 2019

ITC own independent R&D building which area is about 4,200 square meters. KTV One-stop Solution applied to Grand Park Hotel Myanmar.

Year 2020

Foundation Laying Ceremony of ITC Industrial Park. ITC 243.3m² P10 Outdoor LED video Wall applied to Vincom Mega Mall Ocean Park City Vietnam.

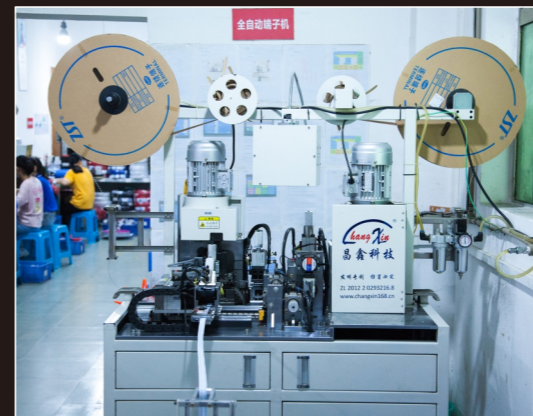
Office



Factory



Factory



Smart Portable Terminal T-100PT



Product Introduction

Smart portable terminal is a hand-held broadcasting device independently developed and innovated. It is suitable for IP PA system, Luna PA system and emergency PA system. Its development and design concept is positioned as a portable professional broadcasting terminal, which is small, light and convenient to carry. Compared with the existing traditional intercom terminal, the handheld terminal is more flexible, convenient, fast and professional. It can be widely applied to various application scenarios and provide corresponding solutions, such as scenic spots, campuses, rural areas, transportation, etc.

Features

- * AI voice broadcasting: Wake up the voice assistant through one key of AI key and name the terminal that you want to perform broadcasting tasks, such as "broadcasting to terminal 2" or "broadcasting to area a"
- * Task Management: Control the tasks and detailed information currently being performed by the broadcasting system, and support operations such as up/down song, play/pause, volume control, etc.
- * PA paging: Select the terminal equipment that needs to perform broadcast tasks in the terminal list, and can shout to the terminal.
- * Music Broadcasting: Support on-demand music on terminal equipment for task push playing.
- * Song List Query: Displays and views the song list list and song list details, and supports song list deletion/addition operations.
- * Beidou Positioning Broadcasting: After acquiring nearby terminals, users can press keys to initiate tasks for the current field devices, such as broadcasting propaganda, media playing, etc.
- * Terminal code scanning broadcast: The two-dimensional code label independently corresponds to a broadcast terminal, and the user can stick it at any position. After turning on the scanning function, the current equipment can be managed by scanning the code.
- * Recording and broadcasting: supports one-button recording and storage functions, and can play and audition the content until the user's effect is satisfactory.
- * Shortcut key operation: The key can initiate voice recognition, voice and text input, and quickly initiate the last broadcast task.

Specification

Model	T-100PT
Display screen	2.8 in, LCD/ips
Resolution	320*240 QVGA
Pixel density	143
Brightness	420CD/m ²
Contrast	MIN500TYP800
Network Settings	According to the needs of the mobile network or wireless network networking mode (when both are turned on, the system preferentially uses the wireless network)
Flow monitoring	You can view the current month's traffic usage and customize the current month's total traffic value
Scan code upgrade	In the networked state, scanning the QR code can upgrade the software (the version can only be compatible upward, and rollback is not supported)
Flashlight	Switch the flashlight
Settings	Including display, Bluetooth, storage space, factory recovery, about and other functions
Photos	You can view the pictures you have taken
Camera	Turn on the camera and shoot
VPN	Support configuration of VPN private network
CPU	Quad-core Cortex-A53
Processor architecture	Quad-core ARM Cortex-A53MP Core
Processor process	28nm SOC
GPU	PowerVR G6100 570MHz
Video coding	1080p30fps H.264/H.265, MPEG-4 SP/ASP
Network system	GSM + WCDMA + TD-SCDMA + TDD + FDD
Frequency	1.5 GHz
4G band	FDD: 13782028ATDD: 38394041
3G band	WCDMA: 1258TD-SCDMA: 3439
EDGE/GPRS specification	CLASS12
Memory	Run memory RAM: 1GB, storage memory ROM: 8GB
GPS	Support
WiFi	WiFi2. 4G/5G
Bluetooth	BLE4.0
Standard charge	1A
Panel technology	G + F
Master IC	FT6336U
Induction technology	Single point + gesture
Camera sensor	SP5509/GC5025
Camera Optical Dimensions	1/5 inch
Camera pixel size	2592*1944 500W
Camera aperture	2.2
Camera wide angle	72 degrees
Flash lamp	True flash
Key	Power key, volume key, return touch key
Horn	Built in
Microphone	Disilicone wheat
Headphone port	TYPE-C Transfer
Charging port	TYPE-C2.0
Battery capacity	Non-removable, real power 1600mAh (built-in product)
Charge and discharge frequency	500 cycle @ cap ≥ 80%
Battery material	Lithium cobaltate
Voltage	3.8 V
Discharge coefficient	0.2 C
Battery density ratio	584.19 Wh/L
Standby time	235H
Shell material	Hardware + plastic
Color	Black
Dimension (H × W × D)	129x58x12.6mm
Net weight	132g

Emergency PA System Android Client Software V6.27

T-7300PA

Emergency PA System IOS Client Software V6.28

T-7300PI



Features

- * Support viewing the terminal list information, online status and device type of all zones.
- * Support online control of terminal volume.
- * Support initiating the broadcast speech to zones or online terminals of the PA system.
- * Support terminal name query and filtering.
- * Support filtering based on terminal status.
- * Support using the player to play selected media library audio files or local audio files to the designated playback area.
- * Support online viewing of ongoing temporary broadcasts/daily broadcasts/emergency plans and support filtering.
- * Support online creation of temporary broadcast program tasks, and support three modes: file playback, terminal collection and document reading and playback.
- * Support online creation of daily broadcast program tasks, and support three modes: file playback, terminal collection and document reading and playback.
- * Support online creation of emergency plan program tasks, and support two modes of document playback and file reading and playback.
- * Support configuring program task parameter information, such as: content type, program name, volume, priority, playback mode, playback content, and playback area.
- * Support initiating document reading and playback to the system, setting the playback times, and setting the playback area.
- * Support the system initiating music broadcast, and support setting the playback zone. The music resources are uploaded from the server in advance.
- * Support deletion or addition of temporary broadcast/daily broadcast/emergency plan tasks.
- * Support operations such as pausing, playing, switching, stopping, and volume control on tasks being performed by the broadcast system through the program manager.
- * Support uploading terminal pictures, which can be used to locate nearby 4G terminals.
- * Support viewing all playable music files on the PA system.
- * Support uploading local audio files.
- * Support display of user name, name, position, mobile phone number, administrative area, role assignment, priority, user type, and user password.
- * Support changing name, mobile phone number and user password online.
- * Support other login methods, such as fingerprint login and face login.
- * Support viewing mobile operation documents.

Emergency PA System Smart Portable Client Software V6.23

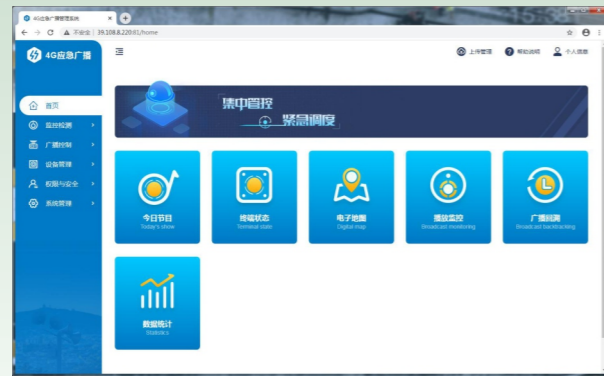
T-7300PT



Features

- * Login: basic user login function, you need to fill in the account password and IP address.
- * Task Manager: view the detailed information of tasks being performed by the system, and support operations such as Previous/Next, Play/Pause, Volume control, etc.
- * Emergency PA system: select the terminal device that needs to perform the broadcast task in the terminal list, and you can initiate a recording broadcast/general broadcast.
- * Shortcut function: set voice recognition, voice text input, and the switch to initiate the previous broadcast/intercom (A/B button).
- * My playlist: view the playlist list and playlist details, and delete/add playlists.
- * Temporary task: display task name, task description, task picture, play/stop icon for music searching and task type filtering.
- * Terminal positioning: perform position marking operations on the terminal; view the distance information of the terminal position, which is used to initiate positioning broadcasts.
- * Scan code broadcast: scan the QR code of the device to obtain the management permission to initiate broadcast tasks.
- * Beidou positioning broadcast: obtain the nearby terminal list devices, and initiate paging operations directly through Beidou positioning.
- * AI voice control: direct natural language input. Directly speak: "Initiate broadcast on terminal 12" to initiate a broadcast task on this terminal.
- * Recording broadcast: support local storage of real-time recording files, and support pushing recording files to the broadcast controller for playback.
- * Broadcast room: support the designated terminal playing the recording files, initiating broadcast paging, and searching for historical broadcast records.

Emergency PA system V5.47 T-7300RP3



Description

Emergency PA system management and control software, installed in district and county emergency PA control centers or servers, is a comprehensive management platform for data exchange, system running and function operation of emergency PA system.

Feature

- * The software uniformly manages all audio terminals in the system, including broadcast consoles, 4G terminals, monitoring speakers, collectors and other devices, and displays the MAC address, online status, task status, volume, storage space and other operating status of the audio terminals in real time.
- * Support the operation of 4G terminals, support audio streaming management, respond to 4G terminal playback requests and audio full-duplex exchanges, support B/S architecture, and support terminal management, user management, program playback management, and playback file approval, device upgrades and other functions through web page.
- * Support system data exhibition board and big data display platform for the real-time display of the system device number, failure rate, loss of connection rate and daily task completion rate, as well as the display of terminal distribution rate and device utilization rate according to administrative zone.
- * Manage media library resources, provide media services for daily broadcast programs and temporary broadcast programs of all audio terminals, respond to program playback requests of each terminal, and provide data interface services for each audio workstation.
- * Support automatic marking of terminal locations on the map, and display terminal distribution in different administrative zones; click to view terminal details.
- * Support real-time monitoring of playback, and easily manage all the broadcast program information being played.
- * Support daily broadcast management according to time plan.
- * Support the recording of real-time broadcasts such as instant broadcasts, remote broadcasts, and microphone announcements. Managers can trace back and check at any time, and they can also play back the broadcast files locally or save them to playback files.
- * Support text broadcast and SMS broadcast, realize the text-to-speech function, support background adjustment of speech speed and selection of voice packages.
- * The background software supports remote firmware upgrade of the terminal.
- * Edit daily broadcast programs, support selecting any terminal to automatically play any broadcast program at any time, support timed task execution tests, and set repetition cycles.
- * Support mobile phone AOD, compatible with Android and IOS mobile APP.
- * The mobile web page supports the functions of call broadcast, map broadcast and temporary broadcast. Users can log in to the mobile web page to operate.
- * Support multi-user, multi-level, designated permission, designated function, designated terminal for classified management of the background;
- * Support terminal custom area division, set call codes for each administrative zone, support one-key start of all zones of broadcast, and one-key start of multiple shortcut zones of broadcast;
- * Support terminal replacement function, users can replace damaged terminals. After the replacement is completed, the terminal device information of the corresponding task will be automatically updated.
- * Support the terminal approval mechanism. Only terminals that have completed the approval can play, which can effectively prevent the protocol from being destroyed and illegally accessed.
- * Support sensitive word import settings and filtering, support sensitive word usage log records, support playback file approval function and automatic approval function.
- * Support comprehensive log trace management of system user operations, terminal equipment status, task programs, real-time broadcasts, and SMS reception.
- * Support setting up multiple emergency plans, and the preset broadcast plans can be triggered by one button in emergency situations or by SMS triggering.
- * Support the migration server function, which can migrate all terminals in the server to another server.
- * Support trigger broadcast function, which can trigger preset broadcast tasks for single or area terminals through third-party devices.
- * Support daily broadcast offline operation, so that the established broadcast plan will not be affected by network and server abnormalities.
- * Support the alarm strategy function, realize the preset alarm strategy in advance, and execute the alarm task after the alarm port is triggered;
- * Support network monitoring function, enabling terminals that perform triggered collection tasks to report abnormal packet loss rate and delay every five minutes.
- * Adopt the background system service operation, which is an enterprise-level standard server working mode. The system can run automatically as turned on. It has higher stability and reliability than the software running in the foreground of the interface.

Paging Microphone Built-in software: microphone call control embedded software V1.32 T-7302A



Description

The paging microphone supports unidirectional speech (in a single zone or in all zones) and monitoring to various terminals in the network. It is suitable for call centers, alarm centers, duty rooms, leadership offices, conference rooms and other places.

Features

- * Desktop design, 7-inch resistive touch screen with 800×480 graphics dot matrix and K600 + core 65K color display, featuring clear display and sensitive touch. When there is no operation, it enters the sleep state, producing low power consumption; designed with a user-friendly operation interface.
- * Equipped with number keys and functional key interface. Support calling one or multiple zones, and calling all-zone broadcasts; support calling any terminal via direct operation; support monitoring (environmental monitoring) any terminal via direct operation according to the actual environment; the maximum monitoring distance reaches 5m.
- * Adopt embedded computer technology and DSP audio processing technology.
- * Built-in 1 network hardware audio decoding module, support TCP/IP, UDP protocol, realize network transmission of 16-bit CD-quality audio signals.
- * Compatible with various network structures such as routers, switches, bridges, gateways, Modem, Internet, 2G, 3G, 4G, etc.
- * Built-in 2W full-range high-fidelity speakers can realize network monitoring.
- * One ϕ 3.5 earphone socket and one ϕ 3.5 MIC input socket match 95% of earphones and portable microphones on the market.
- * One audio line output to connect external power amplifiers; one audio line input to provide multi-audio source transmission.
- * Digital products, easy extension, no geographical limitation, no need to add computer room management devices, adopt shared network and free of wiring construction.
- * Support remote firmware upgrades of the terminal on the PA system, no need to upgrade the terminal locally, reducing the work intensity of maintenance personnel.
- * DC power supply interface, external adapter.

Specification

Model	T-7302A
Network interface	Standard RJ45 input
Communication protocol	TCP/IP, UDP
Audio format	MP3
Sampling rate	8KHz~48KHz
Transmission rate	100Mbps
Audio mode	16-bit CD sound quality
Screen dimension	7 inches
Screen resolution	800×480
Screen type	65K color DGUS screen
Keyboard type	Virtual QWERTY keyboard
Keyboard input mode	Touch control
Built-in speaker impedance and rated power	4 Ω , 2W
THD	≤1%
Frequency response	80Hz~16KHz +1/-3dB
SNR	>65dB
PHONE OUT output impedance and rated power	32 Ω , 2mW
LINE OUT output level	1000mV industry standard crimping terminal
LINE OUT output impedance	470 Ω
LINE IN input sensitivity	350mV industry standard crimping terminal
MIC input sensitivity (unbalanced)	10mV
Working temperature	5°C~40°C
Working humidity	20%~80% relative humidity, no condensation
Total power consumption	≤6W
Input power	~190V-240V 50Hz-60Hz (power adapter); DC24V/1.5A
Dimension	200×158×163 mm
Net weight	1.2kg

IP Network Speaker

Embedded software: digital IP network terminal embedded software V2.0

T-7307**Description**

It is suitable for monitoring in broadcasting rooms, and can also be used as local broadcasting amplification.

Features

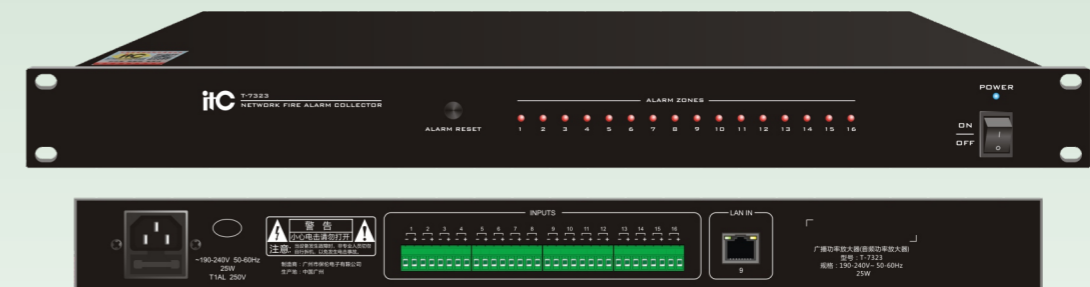
- * Integrated design, integrated network decoding module, digital power amplifier and speakers.
- * Built-in high-fidelity speakers, stereo power amplifier 2×8W.
- * 1-channel line (AUX) input interface, with independent volume potentiometer control, support local paging function when disconnected from the network; support the preset reduction of silent intensity and the background music preset function.
- * Built-in TF card storage function, suitable for task playback cache.
- * 1-channel auxiliary speaker power output interface, which can expand to 8Ω constant resistance speakers.
- * Compatible with any network structure such as routers, switches, bridge gateways, Modem, Internet, 2G, 3G, 4G, etc.
- * Digital products, easy to expand, not limited by geographical location, no need to increase management equipment, adopt the design of common network and free line construction, easy to install.
- * Support the remote firmware upgrade of the terminal by PA system, without the need for local upgrade of the terminal, reducing the work intensity of maintenance personnel.

Specification

Model	T-7307
Network interface	Standard RJ45 input
Transmission rate	100Mbps
Support protocol	TCP/IP, UDP
Audio format	MP3, PCM
Audio transmission quality	16-bit CD quality
Sampling rate	8KHz~48KHz
AUX input sensitivity	350mV (unbalanced) industry standard terminal
Frequency response	80Hz~16KHz +1/-3dB
THD	≤1%
SNR	≥68dB
Total power consumption	≤50W
Circuit protection	Overload and short circuit protection circuit
Working temperature	5°C~40°C
Working humidity	20%~80% Relative humidity, no condensation
Power supply	~190V-240V 50Hz-60Hz
Size	190mm*180mm*280mm
Weight	3kg

Collector

Embedded software: Digital IP network platform terminal embedded software V2.02

T-7323**Description**

The equipment can be used in fire protection centers to collect fire alarm short-circuit signals.

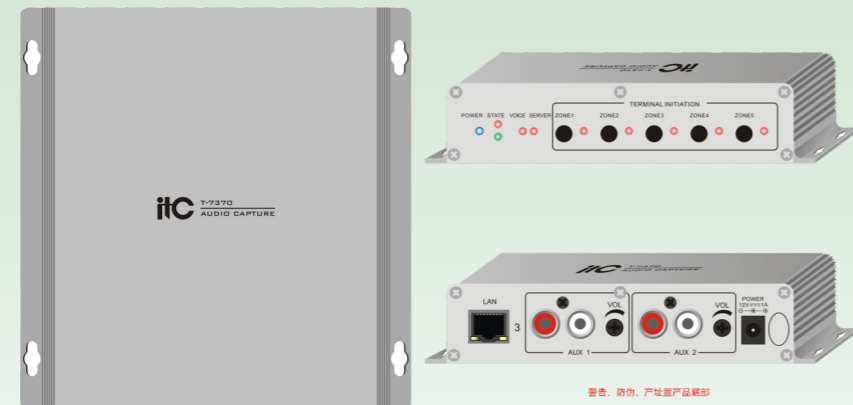
Features

- * Standard cabinet design, 1U height, high-grade wire-drawing aluminum alloy panel, sophisticated workmanship, showing high-end temperament.
- * The equipment uses an embedded industrial-grade dual-core processing chip (ARM+DSP).
- * Supports 16-channel fire short-circuit signal input, and can infinitely expand the input interface to facilitate the use of larger systems.
- * Supports one-click factory restore function to facilitate system maintenance and management to the greatest extent.
- * The panel supports one-click task cancellation.
- * Standard network interface, full-rate connection up to 100M.

Specification

Model	T-7323
Network interface	Standard RJ 45 input
Transmission rate	100Mbps
Supporting agreement	TCP/IP, UDP
Short circuit interface	Industrial standard crimping terminal
Power consumption	≤20W
Input power	~190-240V 50-60Hz
Product size	484×209×44mm
Weight	3kg

Encoder T-7370



Description

The encoder is designed for 4G IP PA system to collect external analog audio signals. It can collect and encode analog audio into digital audio, and transmit to the terminals in designated areas for playback through the network.

Features

- * All-aluminum housing, neat and exquisite appearance, sturdy and durable structure.
- * Adopt embedded computer technology and DSP audio processing technology.
- * Adopt built-in 1 network hardware audio coding module, support TCP/IP, UDP protocols, realizing the network transmission of 16-bit CD-quality audio signals.
- * Built-in 2 groups of RCA input terminals, with input volume adjustment, flexibly adapt to a variety of audio devices with different sensitivities.
- * Support timed broadcast tasks, temporary broadcast tasks, the priority level of the broadcast tasks can be set through the server.
- * Support two broadcast modes: "Normal broadcast" and "Intermediate broadcast". "Normal broadcast" can realize extremely low-latency network audio collection effects, and "Intermediate broadcast" can achieve low-latency network audio collection effects with general sound quality.
- * Support terminal locally triggering 5 zones to independently start or end the terminal collection tasks.
- * Support various network structures such as routers, switches, bridges, gateways, Modem, Internet, 2G, 3G, 4G, etc.
- * Support remote firmware upgrades of the terminal on the PA system, no need to upgrade the terminal locally, reducing the work intensity of maintenance personnel.

Specification

Model	T-7370
Network interface	Standard RJ45 input
Communication protocol	TCP/IP, UDP
Audio format	MP3, PCM
Sampling rate	8kHz~48kHz
Transmission rate	100Mbps
Audio transmission	16-bit CD sound quality
Input frequency	80Hz~10kHz +1/-3dB
AUX input sensitivity	350mV (unbalanced) standard RCA input interface
SNR	≥68dB
Ambient temperature	5°C~40°C
Ambient humidity	20%~80% relative humidity, no condensation
Power consumption	≤10W
Input power	DC12V/1A
Dimension (L×W×H)	163×156×32mm
Weight	0.5kg

All-weather Column Speaker (4G) Embedded software: digital audio control embedded software V1.08 T-7382A4G



Description

It features the integrated design of column speaker and digital network decoding module, as well as the waterproof and rust-proof aluminum alloy housing. It can be installed on outdoor poles in various broadcasting management areas and used for program broadcast and local broadcast in outdoor places such as parks, squares, streets, and scenic spots.

Features

- * With all-aluminum integrated structure, excellent sealing performance, and fast-conducting all-copper nickel-plated ground pole, it can meet the usage and safety requirements of outdoor harsh environments.
- * Designed with one built-in network digital audio decoding module, support IP/TCP, UDP and other communication protocols, realize the network transmission of 16-bit CD-quality audio signals.
- * Built-in 30W digital amplifier module, fine sound quality and strong power.
- * Built-in one LINE OUT output interface, connected to an external power amplifier or outdoor active speaker for local sound amplification.
- * Support server unified authorization of operation and management, support unified configuration and management of users and passwords; support 100-grade custom audio priority of mute control function.
- * There is no need to build a separate network; it can be connected with a cloud computer network and adopt a 4G-based network extension architecture. It can be used wherever a 4G network is available.
- * Support Beidou positioning to accurately locate the position of the device;
- * Support the data-saving mode; the cloud server downloads audio to the terminal, and it does not need to download repeatedly when the audio is played in a loop or when the audio is the same. It only needs to receive a small amount of instruction data from the cloud server.
- * Support APP remote control; remote broadcast, AOD and other operations can be performed on the terminal through the mobile APP.
- * Digital product, easy extension, simple structure, support remote wireless upgrade of terminal firmware, greatly reducing maintenance costs in the future.
- * DC24V power supply can be customized to realize outdoor solar battery power supply.

Specification

Model	T-7382A4G
Network connection	4G wireless network connection
Network system	All networks
Device positioning	Beidou positioning
SIM card	Standard 25*15mm SIM card/IoT card (All networks)
TF card	16G
Communication protocol	TCP/IP, UDP
Audio format	MP3, PCM
Sampling rate	8K~48KHz
Audio mode	16-bit CD sound quality
Rated power	30W
THD	≤1%
Frequency response	150Hz~16KHz +6dB/-6dB
SNR	≥68dB
DC power supply	DC24V (customized)
Working temperature	-20°C~60°C
Working humidity	20%~80% relative humidity, no condensation
Working voltage	~220V 50Hz
Total power consumption	≤45W
Speaker	4"×2
Dimension (L×W×H)	574×150×145mm
Weight	5.5kg

Column Speaker

Embedded software: digital audio control embedded software V1.08

T-7384A4G**Description**

It features the integrated design of column speaker and digital network decoding module, as well as the waterproof and rust-proof aluminum alloy housing. It can be installed on outdoor poles in various broadcasting management areas and used for program broadcast and local broadcast in outdoor places such as parks, squares, streets, and scenic spots.

Features

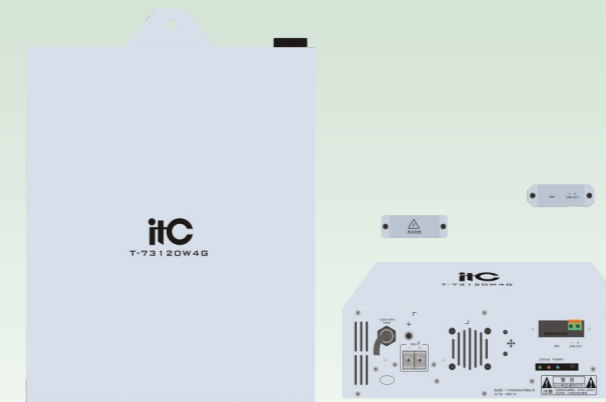
- * With all-aluminum integrated structure, excellent sealing performance, and fast-conducting all-copper nickel-plated ground pole, it can meet the usage and safety requirements of outdoor harsh environments.
- * Designed with one built-in network digital audio decoding module, support IP/TCP, UDP and other communication protocols, realize the network transmission of 16-bit CD-quality audio signals.
- * Built-in 60W digital amplifier module, fine sound quality and strong power.
- * Built-in one LINE OUT output interface, connected to an external power amplifier or outdoor active speaker for local sound amplification.
- * Support server unified authorization of operation and management, support unified configuration and management of users and passwords; support 100-grade custom audio priority of mute control function.
- * There is no need to build a separate network; it can be connected with a cloud computer network and adopt a 4G-based network extension architecture. It can be used wherever a 2G/3G or 4G network is available.
- * Support Beidou positioning to accurately locate the position of the device;
- * Support the data-saving mode; the cloud server downloads audio to the terminal, and it does not need to download repeatedly when the audio is played in a loop or when the audio is the same. It only needs to receive a small amount of instruction data from the cloud server.
- * Support APP remote control; remote broadcast, AOD and other operations can be performed on the terminal through the mobile APP.
- * Digital product, easy extension, simple structure, support remote wireless upgrade of terminal firmware, greatly reducing maintenance costs in the future.
- * DC24V power supply can be customized to realize outdoor solar battery power supply.

Specification

Model	T-7384A4G
Network connection	4G wireless network connection
Network system	All networks
Device positioning	Beidou positioning
SIM card	Standard 25*15mm SIM card/IoT card (All networks)
TF card	16G
Communication protocol	TCP/IP, UDP
Audio format	MP3, PCM
Sampling rate	8kHz~48kHz
Audio mode	16-bit CD sound quality
Rated power	60W
THD	≤1%
Frequency response	130Hz~16KHz +6dB/-6dB
SNR	≥68dB
DC power supply	DC24V (customized)
Working temperature	-20°C~60°C
Working humidity	20%~80% relative humidity, no condensation
Working voltage	~220V 50Hz
Total power consumption	≤95W
Speaker	4*4
Dimension (L*W*H)	150*145*814mm
Weight	7.5kg

Wireless Addressable Receiver Terminal

Embedded software: Digital Addressable PA System V8.69

T-73120W4G**Description**

The terminal adopts the integrated design of digital amplifier module and iron box. Designed with a waterproof and rust-proof case, it can be installed on the outdoor posts of various broadcast management areas, and used for program broadcast and local broadcast in places such as parks, squares, streets, scenic spots, etc.

Features

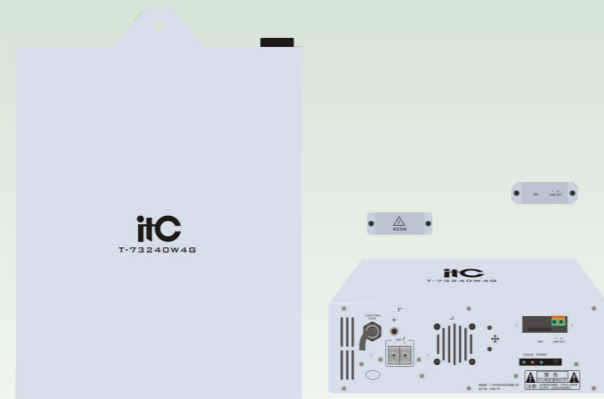
- * Three-sided fully enclosed structure design, recessed wiring section, effective waterproof treatment, and the fast-conducting all-copper nickel-plated grounding post, in line with the use and safety requirements of outdoor harsh environments.
- * Built-in network digital audio decoding module supports IP/TCP, UDP and other communication protocols to realize network transmission of 16-bit CD-quality audio signals.
- * Built-in 120W digital amplifier module, with delicate sound quality and strong power.
- * Built-in 1 LINE OUT interface, connected to external amplifier for local sound amplification.
- * Support server unified authorization management function, unified user and password configuration management function; support 100-level custom audio priority mute control function.
- * No need to set up an independent network, it can be connected to the cloud computer network; using a 4G network extension architecture, it can be used as long as there is 4G network coverage.
- * Support Beidou positioning to accurately locate the position of the device.
- * Support power detection function: when the power voltage is <170V, the server undervoltage warning will be reported; when the power voltage is >245V, the server overvoltage warning will be reported. When the power voltage is <170V or >260V, the power supply will be cut off.
- * Added short-circuit input function: short circuit input triggering task can be configured in the server.
- * Support short-circuit restart function: long short circuit for 5 seconds to restart the terminal, and the device can be restarted.
- * With network debugging port: convenient for pre-commissioning or post-maintenance and viewing data and IP addresses.
- * Digital product, easy to extend, easy to install, not limited by geographical location, no need to add management equipment in the computer room.

Specification

Model	T-73120W4G
Network connection	4G wireless network connection/RJ45 network port connection
Network format	All networks
Device location	Beidou positioning
SIM card	Standard 25*15mm SIM card/IoT card
Line out	1V
Short circuit trigger	No voltage, short circuit
Short circuit input	Power restart input: contact≥5S, no voltage
Rated power	120W
THD	≤1%
Sampling rate	8k~48KHz
Frequency response	80Hz~16KHz +1dB/-3dB
SNR	≥68dB
Protection class	IP33
Working temperature	-30°C~60°C
Relative humidity	20%~80%, no condensation
Power voltage	~220V 50Hz
Total power consumption	≤160W
Dimension (L*W*H)	355*260*85mm
Weight	2.5kg

Transceiver

Embedded software: digital addressable PA system V8.69
T-73240W4G



Description

It features the integrated design of digital amplifier module and tin box, as well as the waterproof and rust-proof housing. It can be installed on outdoor poles in various broadcasting management areas and used for program broadcast and local broadcast in outdoor places such as parks, squares, streets, and scenic spots.

Features

- * With three-sided fully enclosed structure, concave wiring section, waterproof treatment, and fast-conducting all-copper nickel-plated ground pole, it can meet the usage and safety requirements of outdoor harsh environments.
- * Designed with one built-in network digital audio decoding module, support IP/TCP, UDP and other communication protocols, realize network transmission of 16-bit CD audio signals.
- * Built-in 240W digital amplifier module, fine sound quality and strong power.
- * Built-in one LINE OUT output interface, connected to external amplifiers for local sound amplification.
- * Support server unified authorization of operation and management, support unified configuration and management of users and passwords; support 100-grade custom audio priority of mute control function.
- * There is no need to build a separate network; it can be connected with a cloud computer network and adopt a 4G-based network extension architecture. It can be used wherever a 4G network is available.
- * Support Beidou positioning to accurately locate the position of the device;
- * Support power detection function: when the power voltage is <180V, the server undervoltage warning will be reported; when the power voltage is >245V, the server overvoltage warning will be reported. When the power voltage is <170V or >260V, the power supply will be cut off.
- * Added short-circuit input function: short circuit input triggering task can be configured in the server.
- * Support short-circuit restart function: long short circuit for 5 seconds to restart the terminal, and the device can be restarted.
- * With network debugging port: convenient for pre-commissioning or post-maintenance and viewing data and IP addresses.
- * Digital product, easy to extend, easy to install, not limited by geographical location, no need to add management equipment in the computer room.
- * With 3*10G/year SIM data card, it can be renewed after 3 years of use or when the traffic is exhausted.

Specification

Model	T-73240W4G
Network connection	4G wireless network connection
Network system	All networks
Device positioning	Beidou positioning
SIM card	Standard 25*15mm SIM card/IoT card
Line output	1V
Rated power	240W, 100V constant voltage
THD	≤1%
Sampling rate	8k~48KHz
Frequency response	80Hz~16KHz +1dB/-3dB
SNR	≥68dB
Protection grade	IP33
Working temperature	-30°C~60°C
Working humidity	20%~80% relative humidity, no condensation
Working voltage	~220V 50Hz
Total power consumption	≤300W
Dimension	355*260*85mm
Weight	2.5kg

Horn Speaker

VA-720K



Features

- * All aluminum alloy structure, stainless steel bracket.
- * Waterproof speaker, large frequency domain, strong sound penetration and wide coverage.
- * Used in squares, railway stations, etc.

Specification

Model	VA-720K
Rated power (100V)	25W, 50W
Maximum power	100W
Impedance	Black: Com Green: 400Ω White: 200Ω
Frequency response	300Hz-14kHz
Sensitivity	104dB ±3dB
Protection grade	Waterproof IP66
Dimension	325×325×355mm
Weight	3.1kg