



Video Intercom system

Catalogue V.24

Guangdong Baolun Electronics Co., Ltd

Add: Building A13-1 Yiku Industrial Park, The Hills, Dognyi Road Panyu District Guangzhou China 511492

Tel: +86-20-34549655, 84593197, 31104730, 31104729 Fax: +86-20-84548799

Website: www.itctech.com.cn E-mail: info@itc-pa.com.cn

* Specifications are subject to change without notice.



Company Introduction

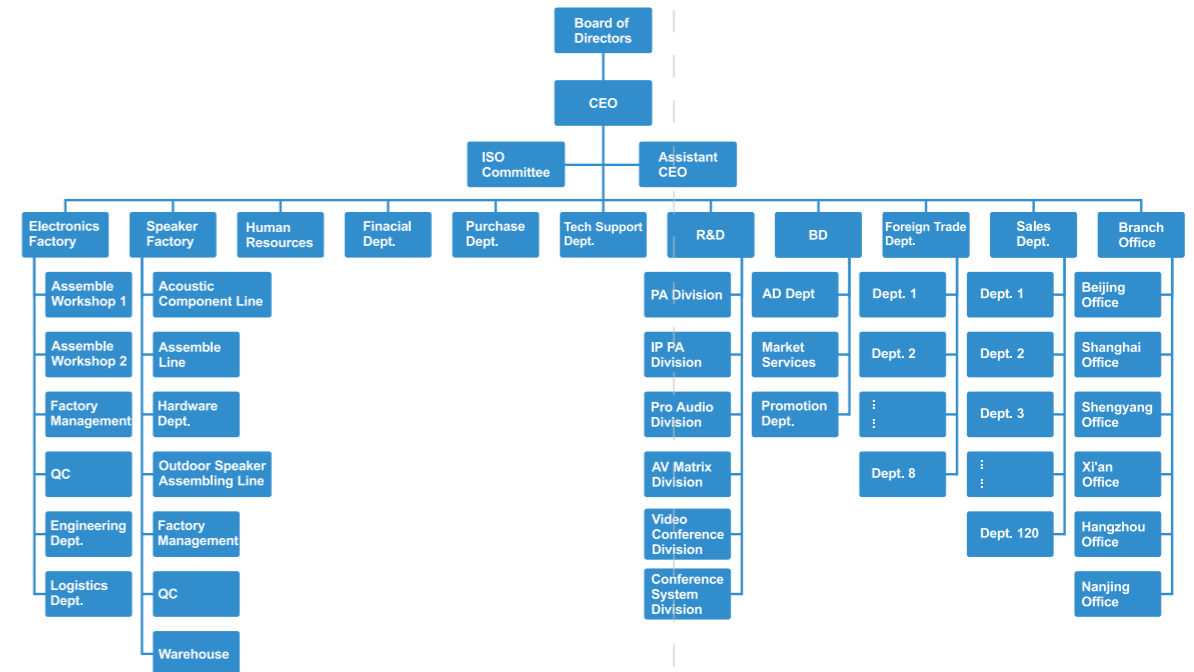
Guangdong Baolun Electronics Co., LTD. (ITC) was established in 1993, located in Panyu district of Guangzhou. ITC is the No.1 and the largest integrated supplier of audiovisual & lighting systems, integrating R&D, production, sales and service together in China for more than 31 years. ITC owns 4 office buildings, 6 R&D centers and 5 factories. There is also an industry-leading intelligent manufacturing industrial park of over 300,000 square meters under construction, which is expected to be put into operation by the end of 2023. We have 1200 R&D engineers, 2000 pre-sales and after-sales technicians, 142 sales departments, all totally more than 6000 employees.

ITC can provide integrated solution from PA system, IP intercom system, Voice evacuation system, HD video conference system, 5G digital conference, Paperless conference, Interpretation system, Central control system, Professional sound system, LED screen, Stage light & Architectural light, etc. We are the official supplier for important events, including 2008 Beijing Olympic Games, 2010 Shanghai World Expo, 2010 Guangzhou Asian Games, 2016 Hangzhou G20 Summit, 2016 Turkey expo, 2022 Beijing Winter Olympics, India subway, USA chain shops, Guyana national conference, Uzbekistan national defense conference, Five Nigeria national airport, CBE Ethiopia bankOur worldwide successful projects are more than 1.5 million cases, and its products have been exported to more than 100 countries around the world.

All of our products are developed and manufactured by ourselves. Our products are compliant with CE, RoHS, EN54, UL, CCC, NOM certificate.

ITC possesses more than 3000 intellectual properties, including appearance patents, software copyrights, utility model patents and invention patents, and has won the honorary titles of "Quality Product", "Famous Brand" and "Most Competitive Brand" for many years. ITC is the "High-tech Enterprise" in China.

Company Organization



Our Production Lines

A group of highest technology equipment are used to strengthen the reliability and output capacity: SMT machine, reflow oven & numerical control cutting machine. 95% PCB of the equipment s are made by SMT machine to ensure quality consistency and higher reliability. The numerical cutting machines enhance the equipment in elaborate & elegant level. A comprehensive process of tests are be involved: drop test, vibration test, aging, Hipot & RoHS test.

Certificates:

CCC, ISO9001, CE & RoHS, IEC60914. Parts of our product are complied with certificates: CB, SASO, ETL, UL, FCC, EN54-16 and EN54-24. Parts of loudspeakers are certified by waterproof, dustproof, fire-proof & explosion-proof.



IP Video Intercom Server

Embedded software: digital IP PA client management software V1.0

TV-6900



Description

The video intercom server is the control center of the video intercom system.

Feature

- * The industrial-grade server adopts an embedded platform operating system, and uses server-grade Linux system as the core operating platform, so that the system is free from virus interference and damage, and greatly improves the stability of system operation.
- * A single server supports up to 5000 terminal management, supports up to 2000 terminals to broadcast separately, and 1000 terminal video intercom and other real-time functions.
- * The server supports multiple languages (Chinese and English), B/S platform operating system architecture, and supports any operating system and any browser for remote access and login.
- * Support user login system management, including verification, login, and logout.
- * Support zone management of terminals, support creating new zones and adding terminals to the corresponding zones.
- * Support door attendance machine personnel list management, you can enter name, number, place of origin, detention date, pictures and other information, and the personnel list can be used for the attendance machine sign-in function.
- * Support the management of NFC card information of attendance machines, and support setting one card to be used on multiple attendance machines.
- * Support information release function, release audio, picture, text and other information to a single device, multiple devices, zones; delete, stop information release and other operations during the information release process.
- * Support the management of resource files of information release, and customize new resources (support image format, audio format) to facilitate rapid information release.
- * Support checking the sign-in record in the background, and users can search the sign-in record by date, including the photo of the sign-in person, sign-in status, sign-in time, etc.
- * Support adjusting the sensitivity of face recognition, including levels 1-9, level 1 is the highest, level 9 is the lowest; the higher the level, the higher the recognition accuracy, and the recognition time will increase accordingly; support adjusting the sensing distance of face recognition.
- * Support viewing the alarm type, alarm time and alarm location of the alarm terminal, and managing the alarm information.
- * Support viewing call records, including the caller, the called, call time, call duration, answering status and other information.
- * Support monitoring the video intercom extension screen, support setting the screen layout as 1, 2, 4, 9, 12 split screens (the number of open monitoring videos is limited by the performance of the local computer and does not occupy server resources), support the configuration of the shortest delay, balance, and fluency mode for monitoring and management of playback performance, suitable for different computers and network performances.
- * Support viewing, downloading, and deleting the recorded video files of the system, as well as VOD.
- * Support recording surveillance video, and the maximum recording time can be set to 999 hours.
- * Supports custom setting of task priorities, including speech, intercom, and broadcast. The alarm task is the highest priority and cannot be modified.
- * There are optional single-task and multi-task modes. When the server is in single-task mode, the server is only allowed to have one information release task at a time; when the server is in multi-task mode, the server is allowed to have multiple information release tasks at a time.
- * Support log import, support setting log import password, ensuring the security of data files.
- * Support setting the hold time for the sign-in record. After exceeding the preset time, the old sign-in record will be deleted to prevent insufficient hard disk space on the server.
- * Support remote version upgrade of management server, door attendance machine, indoor extension machine, indoor extension and other equipment.
- * Support operations such as viewing, restarting, modifying, and deleting the basic information of the device; support batch update of the device address book.
- * Support extension of video broadcasting functions.

Specification

Model	TV-6900
Software Operating Platform	Linux system
Processor	E3-1230v5
Hard Disk	Support hot swap, support up to 8 hard disks, standard 8 hard disk cases, compatible with 3.5/2.5-inch hard disk, support Raid 0 1 5 10, standard 1*3.5-inch 1T enterprise hard disk
RAM	Standard 4G ECC DDR4 2400, support maximum 64G DDR4 (4 slots)
I/O Interface	1* VGA; 2* Intel Gigabit copper port; 1*IPMI independent remote management port; Front panel: 2*USB2.0; Rear panel: 4*USB2.0; 1*RS232 COM port
Motherboard	Supermicro E3 single-socket server motherboard
Audio Format	aac, wav, mp3, ape, ogg, m4a
Image Format	bmp, jpg, jpeg, png, tiff
Video Format	mp4, swf, rm, avi, mov, flv, 3gp, rmvb
Audio Coding Format	aac
Video Encoding Format	H264
Network Protocol	HTTP, RTMP, RTSP, TCP, UDP, ICMP, onvif
Network Rate	10/100/1000Mbps
Power Supply	FSP 500W server power supply
Power Voltage	AC 100-240V
Ambient Temperature	10°C~35°C (working state), -40°C~55°C (non-working state)
Relative Humidity	10%~80% (working state), 0%~95% (non working state), no condensation
Dimension (L×W×H)	675×430×88mm
Weight	25kg

Video Intercom Controller

TV-6900D



Description

The video intercom controller is equipped with the CENT OS operating system, and supports the installation of video intercom system software. It is the control center of the video intercom system, which can conduct real-time and effective management of the entire video intercom system.

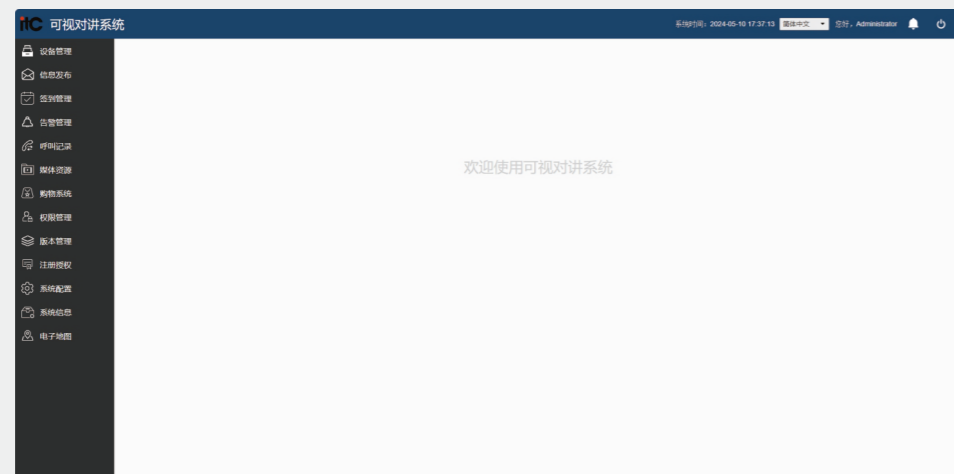
Feature

- * Industrial-grade 1U cabinet with stable structure, excellent anti-electromagnetic interference and anti-radiation capabilities, in line with EMC design standards.
- * Industrial-grade dedicated motherboard design, dual-core four-thread ultra-low power embedded industrial-grade processor, faster processing speed, stronger operating performance, and long-term power-on stable operation.
- * Enterprise-class hard disk with built-in large capacity 1TB-SATA interface.
- * Server-level system (Linux system), as the core operating platform, has strong openness and is easy to expand, develop and upgrade; it has superior network support, high open source security, and strong compatibility, making the system free from virus interference and damage.
- * Support unified management of all intercom terminals in the system, and a maximum of 300 terminal devices can be managed.

Specification

Model	TV-6900D
Motherboard	ASUS H310T Motherboard
Hard Disk	Seagate-ST1000DM010-1TB-SATA interface
Memory	Memory: DDR4 4G (The capacity will continue to increase due to continuous product upgrades)
Network Card	Dual network card; Realtek REL8168/8111/8112 Gigabit Ethernet controller, 1000M
CPU	CPU-Intel-I3 (Dual Core/Quad Thread)
System Audio Signal Sensitivity	MIC IN: 280mV
System Audio Signal SNR	LINE OUT: 85dB
System Audio Signal Standard Output Level	0dBV
System Audio Signal Distortion	1KHz<0.5%
Input Power	DC 19V
Power Consumption	150W
MTBF	100,000H
Working Temperature	0°C~40°C
Working Humidity	20%~80% relative humidity, no condensation
Dimension (L×W×H)	550×440×44mm
Standard Interface	Built-in 6 USB ports, 1 MIC IN port, 1 LINE OUT port; 1 HDMI port, 1 COM port
Software System Platform	CENT OS
Weight	3.5kg

Digital IP PA Client Management Software V1.0
TV-6900R



Feature

- * Support multiple languages (Chinese and English), and B/S platform operating system architecture, support remote access and login through any operating system and any browser.
- * Support user login management, including authentication, login, and logout.
- * Support zonal management of terminals, support the creation of new zones and add terminals to the corresponding zones.
- * Support personnel list management on the entrance unit, support entering personnel name, number, birthplace, detention date, pictures and other information, and support sign-in function on the entrance unit.
- * Support the management of NFC card information of entrance units, and support one card being used on multiple entrance units.
- * Support information release function, support the release of audio, pictures, texts and other information to a single device, multiple devices and zones; support deleting, stopping information release and other operations during the information release process.
- * Support the management of resource files for information release, and the creation of new resources (image format, audio format), convenient for information release.
- * Support viewing the sign-in record in the background, support searching for the sign-in record by date, including the sign-in photo, status, time, etc.
- * Support sensitivity adjustment of face recognition, ranging from level 1 to 9, level 1 is the highest; the higher the level, the higher the recognition accuracy, and the recognition time will increase accordingly; support adjusting the sensing distance of face recognition.
- * Support viewing the alarm type, alarm time and alarm location of the alarm terminal, and support managing the alarm information.
- * Support viewing call records, including caller, called end, call time, call duration, answering status and other information.
- * Support monitoring the screen of video intercom extension, support setting the screen layout as 1, 2, 4, 9, 12 split screens (the number of opened monitoring videos is limited by the performance of the local computer and does not occupy server resources); support the configuration of monitoring management and playback performance as the shortest delay, balance, and smoothness mode, suitable for different computer and network performance.
- * Support viewing, downloading, and deleting the recorded video files of the system, as well as VOD function.
- * Support recording surveillance video, and the maximum recording time can be set to 999 hours.
- * Support user-defined task priorities, including talk, intercom, and broadcast. The alarm task is the highest priority and cannot be modified.
- * Support optional single-task and multi-task modes. When the server is in single-task mode, the server is only allowed to conduct one information release task at a time; when in multi-task mode, the server is allowed to conduct multiple information release tasks simultaneously.
- * Support log import, support setting the log import password, ensuring the security of data files.
- * Support setting the hold time for the sign-in record. After the time is exceeded, the old record will be deleted to prevent insufficient hard disk space on the server.
- * Support remote version upgrade of management controller, entrance unit, indoor extension and other devices.
- * Support operations such as viewing, restarting, modifying, and deleting the basic information of the device; support batch update of the device address book.
- * Support the extension of the video broadcast function of the device.

Video Intercom Management Controller
Embedded software: digital IP PA system V3.0
TV-6901B



Description

Designed with an 11.6-inch HD display, capacitive touch screen, and a built-in 1080P HD camera, it can make one-way (point-to-point, zonal or all-zone) video intercom, two-way video intercom and monitoring to various terminals in the network. It is suitable for various call centers, alarm centers, duty rooms, leadership offices, conference rooms, etc.

Feature

- * Use professional audiovisual processing chips and Android operating system, support expansion and customization, support 7*24 hours of uninterrupted operation, highly interactive, stable and reliable.
- * The management controller can make a video intercom with extensions or other controllers in duplex mode, by hands-free method, handle, and TALK button; during the intercom, it can stop the other party from speaking, control the door lock of the other party's terminal, and record the content and picture of the conversation.
- * Support the controller entrusting management, the management controller can entrust its extension to other first-level controllers for management.
- * When the extension call is busy/timeout and no one answers, the call information can be uploaded to other controllers.
- * Support call overriding function, the controller can forcibly switch the calling extension to make a new call.
- * Support standard SIP communication protocol, two-way intercom with VOIP phone, support multi-SIP account mode, and support connecting multiple SIP servers.
- * Support connecting with the video conference MCU, and participants can join the virtual conference room for multi-party video conferences.
- * Support the command mode, the commander can issue orders to all members, and only the commander can hear the responses of the members.
- * The management controller can automatically monitor each extension under management (the default time for each channel is 10 seconds), and can also monitor any selected extension.
- * When there is noise at the extension end, man-made smashing, or illegal forced demolition, it can alarm the controller; when the extension end alarms, it can link with other platforms through TCP connection, e.g. turn on the surveillance camera.
- * Support the encryption of data in transmission to prevent others from eavesdropping and use, making calls more secure.
- * Support online monitoring function, real-time monitoring of the online status of the extension, convenient for debugging and maintenance.
- * Alarm status, intercom status, and online status can be indicated by icons, and device information can be added.
- * Support monitoring of the screen of indoor extensions, and monitoring polling can be set.
- * Support the access control function, the controller can unlock the room door corresponding to any extension, and can also unlock the zone or all zones.
- * Support selecting relevant audio files for broadcasting in all zones or in designated zones, and setting the loop playback mode.
- * Support the function of timed broadcast and one-way talk broadcast in the zonal mode, all-zone mode, a single zone, and a single terminal mode.
- * Support access to FM/MP3 smart players, CD players, MP3 players and other audio source devices for broadcasting.
- * The management controller can record the call process (local SD card recording), support automatic recording, and the query, playback, storage, and upload to the server.
- * Support information release function, and support receiving audio and picture broadcasts from the server; audio, pictures, text and other information can be released to a single device, multiple devices, and zones; operations such as deleting and stopping information release can be performed during the information release process.
- * Support the connection with the digital IP PA system, make a two-way intercom, talk, and broadcast to the broadcasting terminal.
- * Support the initiation of timed sign-in function, start of sign-in tasks, and support viewing the sign-in records. Users can search the sign-in records by date, including the photo of the sign-in personnel, sign-in status, sign-in time, etc.
- * Support remote upgrade function, support firmware upgrade through LAN, convenient and labor-saving.
- * Designed with rich interfaces to meet various functions, including USB3.0 interface, HDMI HD output interface, RS485 interface and so on.
- * Equipped with one HDMI output, support HDMI output on a large screen, and realize the same display or different display of dual screens.
- * Support multi-channel VIS cascade to realize more equipment management.
- * Support public network deployment, support long-distance calls across network segments, and no longer limited to LAN inner connections.
- * Support multi-party video calls, support a maximum of 6-party video calls and 32-channel voice calls.
- * Support the installation of third-party applications.

Specification

Model	TV-6901B
Operating System	Android operating system
Display Screen	11.6-inch HD display, capacitive multi-touch screen
Display Resolution	1920*1080
Network Port	Standard RJ45 interface
Transmission Rate	10M/100M/1000Mbps
Communication Protocol	TCP/IP, UDP, IGMP, RTSP, RTMP, ONVIF
Antenna Interface	Support 2.4G/5GWIFI, and Bluetooth
Internet	4G (optional)
Audio Format	WAV, MP3
Output Frequency	20Hz~20KHz
Audio Protocol	G.711a/u, G.722, AAC
Audio Sampling rate	16K~48KHz
Audio Mode	16-bit stereo
Built-in Speaker Impedance Power	4Ω, 3W
Audio Stream	16Kb~192Kb
Audio Port	One 3.5mm input, one 3.5mm output
MIC Input Sensitivity	10mV
THD	0.1%
SNR	>85dB
Video Port	One HDMI output, support HDMI1.4
Video Protocol	SIP
Video Stream	512Kb~4Mb
Video Camera	Built-in, 5M
Handle	One external handle (handset call)
Other Interfaces	1 USB3.0 interface, 1 RS485 interface, 1 SIM card, 1 TF card interface, 1 TYPEC interface, 1 relay interface
Power Supply mode	External DC power supply
Power Supply	DC12V/2.5A
Power Consumption	10W
Working Temperature	-20℃~50℃
Working Humidity	10%~90% relative humidity, no condensation
Weight	3.4Kg
Dimension	370*200*145mm (L×W×H)
Installation Method	Desktop

Video Intercom Terminal
 Embedded software: digital IP PA system V3.0
TV-6902B



Description

It supports the functions such as audio information release and two-way video intercom. It is suitable for prisons, school classrooms, office rooms, conference rooms and other places.

Feature

- * Using professional audiovisual processing chip and Android operating system, it is stable and reliable, and can support 7*24 hours of uninterrupted work.
- * 11.6-inch HD display, capacitive touch screen, 1080P resolution, 5M HD camera.
- * Support calling on-duty management controller and management center controller; support two-way video intercom.
- * Support one-key alarm function, send emergency alarm request to the management controller.
- * Support the emergency processing function, support canceling the alarm state of the entrance video intercom extension.
- * Support face recognition sign-in, and scheduled sign-in tasks can be preset in the background or on the management controller.
- * Support fill light function, in a relatively dark environment, provide lighting for the focal direction of the camera.
- * Support sign-in through face recognition and fingerprint recognition.
- * Support shopping mall function, clearly display the products that can be purchased in the mall and their detailed information (prices, pictures, inventory, etc.), support card payment function.
- * Support personnel management, personnel information viewing, status viewing, personnel text information editing and other functions.
- * Support card management, you can put the NFC card close to the induction area of the machine, fill in the card name and remark information, and the NFC card can be used in the machine after registration.
- * Support the functions of modifying the management password, setting the system time, setting the prompt tones, adjusting the volume, setting the screen saver and calibration, performing system upgrade, and restoring the factory settings.
- * Support the display of door number, personnel name and number, alarm information of corresponding extension, etc.
- * Support the reception and display of the information published by the information release server or controller.
- * Support standard SIP communication protocol, carry out two-way intercom with VOIP phone, support multiple SIP account mode, and support connecting to multiple SIP servers.
- * Support connecting with the video conference MCU, and participants can join the virtual conference room for multi-party video conference.
- * Support tamper alarm, send the alarm to the controller, and connect with other platforms.
- * Support encryption of data in transit to prevent others from eavesdropping.
- * Support remote upgrade function, firmware upgrade can be carried out through the LAN.
- * It has various interfaces, with USB3.0 and USB2.0 interfaces, HDMI output interface, RS485 interface, etc.
- * With one HDMI output, it supports HDMI output on a large screen to achieve dual-screen simultaneous display.
- * Support public network deployment, support long-distance calls across network segments, and no longer limited to LAN connections.
- * Support video calls, the system supports a maximum of 6 simultaneous video calls and 32 audio calls.
- * Support mood record, record mood status, support viewing the mood record data.
- * Support patrolling sign-in.
- * Support external multi-color door lights, door sensors, electric locks, NFC access control.
- * Support the connection with third-party business data (prison administration, office administration, health system, etc.), and realize prison administration service inquiry on third-party platforms such as self-service consumption, personnel information inquiry, reformation information inquiry, police discipline business interaction, and online interviews.
- * Support the installation of third-party APP applications.

Equipped with a mounting bottom case (iron) to support embedded installation.

Specification

Model	TV-6902B
Operating System	Android operating system
Display	11.6-inch HD display, capacitive multi-touch, explosion-proof touch screen, protection class IK08
Resolution	1920*1080
Internet Port	Standard RJ45 port
Transmission Rate	10M/100M/1000Mbps
Communication Protocol	TCP/IP, UDP, IGMP, RTSP, RTMP, ONVIF
Antenna Port	Support 2.4G/5G WiFi (optional), support Bluetooth (optional)
Internet	4G (optional)
Audio Format	MP3, WAV
Audio Protocol	G.711a/u, G.722, AAC
Audio Sample Rate	16kHz~48kHz
Audio Mode	16-bit stereo
Output frequency	20Hz~20kHz
Built-in Speaker Impedance Power	4Ω, 3W
Audio Stream	16Kb~192Kb
Audio Port	One 3.5mm input, one 3.5mm output
MIC Input Sensitivity	10mV
THD	0.1%
SNR	>85dB
Video Interface	One HDMI output, support HDMI1.4
Video Protocol	SIP
Video Stream	512Kb-4Mb
Camera	Built-in type, 5M
Fingerprint Recognition	Networking type
NFC Card	NFC-532
RS485 & RS232	One 485 port, connected to door light equipment, etc.
IO Port	Two relay normally open outputs (passive), two control inputs (passive), control door lock equipment and camera linkage
Other Ports	1 USB3.0 port, 3 USB2.0 ports, 1 SIM card port, 1 TF card port, 1 TYPEC port, 1 RS485, 1 RS232
Power Supply Mode	External DC power supply
Power Supply	DC12V2.5A
Power Consumption	10W
Working Temperature	-20℃~+50℃
Working Humidity	10%~90% relative humidity, no condensation
Weight	3.2kg
Dimension	380×231×42mm (L×H×D)
Installation Method	Embedded or wall mounted

Video Intercom Management Controller
 Embedded software: digital IP PA system V3.0
TV-6901B



Description

Designed with an 11.6-inch HD display, capacitive touch screen, and a built-in 1080P HD camera, it can make one-way (point-to-point, zonal or all-zone) video intercom, two-way video intercom and monitoring to various terminals in the network. It is suitable for various call centers, alarm centers, duty rooms, leadership offices, conference rooms, etc.

Feature

- * Use professional audiovisual processing chips and Android operating system, support expansion and customization, support 7*24 hours of uninterrupted operation, highly interactive, stable and reliable.
- * The management controller can make a video intercom with extensions or other controllers in duplex mode, by hands-free method, handle, and TALK button; during the intercom, it can stop the other party from speaking, control the door lock of the other party's terminal, and record the content and picture of the conversation.
- * Support the controller entrusting management, the management controller can entrust its extension to other first-level controllers for management.
- * When the extension call is busy/timeout and no one answers, the call information can be uploaded to other controllers.
- * Support call overriding function, the controller can forcibly switch the calling extension to make a new call.
- * Support standard SIP communication protocol, two-way intercom with VOIP phone, support multi-SIP account mode, and support connecting multiple SIP servers.
- * Support connecting with the video conference MCU, and participants can join the virtual conference room for multi-party video conferences.
- * Support the command mode, the commander can issue orders to all members, and only the commander can hear the responses of the members.
- * The management controller can automatically monitor each extension under management (the default time for each channel is 10 seconds), and can also monitor any selected extension.
- * When there is noise at the extension end, man-made smashing, or illegal forced demolition, it can alarm the controller; when the extension end alarms, it can link with other platforms through TCP connection, e.g. turn on the surveillance camera.
- * Support the encryption of data in transmission to prevent others from eavesdropping and use, making calls more secure.
- * Support online monitoring function, real-time monitoring of the online status of the extension, convenient for debugging and maintenance.
- * Alarm status, intercom status, and online status can be indicated by icons, and device information can be added.
- * Support monitoring of the screen of indoor extensions, and monitoring polling can be set.
- * Support the access control function, the controller can unlock the room door corresponding to any extension, and can also unlock the zone or all zones.
- * Support selecting relevant audio files for broadcasting in all zones or in designated zones, and setting the loop playback mode.
- * Support the function of timed broadcast and one-way talk broadcast in the zonal mode, all-zone mode, a single zone, and a single terminal mode.
- * Support access to FM/MP3 smart players, CD players, MP3 players and other audio source devices for broadcasting.
- * The management controller can record the call process (local SD card recording), support automatic recording, and the query, playback, storage, and upload to the server.
- * Support information release function, and support receiving audio and picture broadcasts from the server; audio, pictures, text and other information can be released to a single device, multiple devices, and zones; operations such as deleting and stopping information release can be performed during the information release process.
- * Support the connection with the digital IP PA system, make a two-way intercom, talk, and broadcast to the broadcasting terminal.
- * Support the initiation of timed sign-in function, start of sign-in tasks, and support viewing the sign-in records. Users can search the sign-in records by date, including the photo of the sign-in personnel, sign-in status, sign-in time, etc.
- * Support remote upgrade function, support firmware upgrade through LAN, convenient and labor-saving.
- * Designed with rich interfaces to meet various functions, including USB3.0 interface, HDMI HD output interface, RS485 interface and so on.
- * Equipped with one HDMI output, support HDMI output on a large screen, and realize the same display or different display of dual screens.
- * Support multi-channel VIS cascade to realize more equipment management.
- * Support public network deployment, support long-distance calls across network segments, and no longer limited to LAN inner connections.
- * Support multi-party video calls, support a maximum of 6-party video calls and 32-channel voice calls.
- * Support the installation of third-party applications.

Specification

Model	TV-6901B
Operating System	Android operating system
Display Screen	11.6-inch HD display, capacitive multi-touch screen
Display Resolution	1920*1080
Network Port	Standard RJ45 interface
Transmission Rate	10M/100M/1000Mbps
Communication Protocol	TCP/IP, UDP, IGMP, RTSP, RTMP, ONVIF
Antenna Interface	Support 2.4G/5GWIFI, and Bluetooth
Internet	4G (optional)
Audio Format	WAV, MP3
Output Frequency	20Hz~20KHz
Audio Protocol	G.711a/u, G.722, AAC
Audio Sampling rate	16K~48KHz
Audio Mode	16-bit stereo
Built-in Speaker Impedance Power	4Ω, 3W
Audio Stream	16Kb~192Kb
Audio Port	One 3.5mm input, one 3.5mm output
MIC Input Sensitivity	10mV
THD	0.1%
SNR	>85dB
Video Port	One HDMI output, support HDMI1.4
Video Protocol	SIP
Video Stream	512Kb-4Mb
Video Camera	Built-in, 5M
Handle	One external handle (handset call)
Other Interfaces	1 USB3.0 interface, 1 RS485 interface, 1 SIM card, 1 TF card interface, 1 TYPEC interface, 1 relay interface
Power Supply mode	External DC power supply
Power Supply	DC12V2.5A
Power Consumption	10W
Working Temperature	-20℃~50℃
Working Humidity	10%~90% relative humidity, no condensation
Weight	3.4Kg
Dimension	370*200*145mm (L×W×H)
Installation Method	Desktop

Video Intercom Interactive Terminal
 Embedded software: digital IP PA client management software V1.0
TV-6902C



Description

It is suitable for prison warehouses, school classrooms and offices, conference rooms, etc. It can realize audiovisual information release, two-way video intercom and other functions.

Feature

- Use professional audiovisual processing chips and Android operating system, support 7*24 hours of uninterrupted operation, stable and reliable.
- Adopt 15.6-inch HD capacitive touch screen, 1080P resolution, 5M HD camera.
- Support calling on-duty controller and center controller, and can realize two-way video intercom.
- Support alarm function, can send emergency alarm request to management controller.
- Support alarm processing, which can release the alarm state of the video intercom entrance unit.
- Support sign-in through face recognition and fingerprint recognition, and scheduled sign-in tasks can be preset in the background or on the management controller.
- Support fill light for the focal length direction of the camera in a relatively dark environment.
- Support personnel management, personnel information viewing, status viewing, editing personnel text information and other functions.
- Support the functions of management password modifying, system time setting, prompt sound setting, volume adjusting, screen saving and calibration setting, system upgrade, and factory reset.
- Support display of door number, personnel name and number, alarm information of corresponding extension, etc.
- Support to receive and display the information released by the information publishing server or controller.
- Support standard SIP communication protocol, two-way intercom with VOIP phone, support multi-SIP account mode, and support connecting multiple SIP servers.
- Support connecting with the video conference MCU, and participants can join the virtual conference room for multi-party video conferences.
- Support tamper alarm to the controller, and can also be linked with other platforms.
- Support the encryption of data in transmission to prevent others from eavesdropping and use.
- Support remote upgrade function, support firmware upgrade through LAN, convenient and labor-saving.
- Designed with rich interfaces to meet various functions, including USB3.0 and USB2.0 interface, HDMI HD output interface, RS485 interface and so on.
- Equipped with one HDMI output, support HDMI output on a large screen, and realize the same display of dual screens.
- Support multi-party video calls, the system supports up to 6-channel video calls and 32-channel voice calls.
- Support mood record, and support to view mood record data.
- Support patrol check-in.
- Support external multi-color door lights, door sensors, and electric locks.
- Support the connection with third-party business data (prison administration, office administration, health system, etc.), realizing the prison administration service query of third-party platforms such as self-service consumption, personnel information query, reformation information query, police discipline business interaction, and online interviews.
- Support the installation of third-party applications.
- Equipped with mounting bracket (iron), support wall-mounted installation.

Specification

Model	TV-6902C
Operating System	Android operating system
Display Screen	15.6-inch HD display, capacitive multi-touch screen, 3mm thick anti-riot touch screen, protection level: IK08
Display Resolution	1920*1080
Network Port	Standard RJ45 interface
Transmission Rate	10M/100M/1000Mbps
Communication Protocol	TCP/IP, UDP, IGMP, RTSP, RTMP, ONVIF
Antenna Interface	Support 2.4G/5GWifi (optional), and Bluetooth (optional)
Internet	4G (optional)
Audio Format	MP3, WAV
Audio Protocol	G.711a/u, G.722, AAC
Audio Sampling rate	16kHz~48kHz
Audio Mode	16-bit stereo
Output Frequency	20Hz~20kHz
Built-in Speaker Impedance Power	4Ω, 3W*2
Audio Stream	16Kb~192Kb
Audio Port	One 3.5mm input, one 3.5mm output
MIC Input Sensitivity	10mV
THD	0.1%
SNR	>85dB
Video Port	One HDMI output, support HDMI1.4
Video Protocol	SIP
Video Stream	512Kb~4Mb
Video Camera	Built-in, 5M
Fingerprint Recognition	Network type
RS485 & RS232	1-channel 485 interface, can be docking with door light equipment
IO Interface	Two-channel relay normally opened output (passive), two-channel control input (passive), can control door lock equipment and camera linkage
Other Interfaces	1 USB3.0 interface, 3 USB2.0 interfaces, 1 SIM card interface, 1 TF card interface, 1 TYPEC interface, 1 RS485, 1 RS232
Power Supply mode	External DC power supply
Power Supply	DC12V2.5A
Power Consumption	11W
Working Temperature	-20℃~+50℃
Working Humidity	10%~90% relative humidity, no condensation
Weight	3.0kg
Dimension (L×H×D)	391*242*60mm
Installation Method	Wall mount

Video Intercom Terminal
 Embedded software: IP intercom system V1.0
TV-6903



Description

With a built-in camera, the video intercom terminal can realize emergency alarm/intercom help function. It is suitable for indoor environment, and can carry out one-way (point, zonal or all-zone) video intercom, two-way intercom and monitoring to various terminals in the network.

Feature

- Adopt professional audio and video processing chip and embedded Linux operating system, stable and reliable; support 7*24 hours of uninterrupted working.
- Simple appearance, anti-removal screw design, high-strength alloy anti-oxidation panel.
- Support two-way network intercom with the video intercom controller.
- Used as a monitoring terminal to receive the content of IP network server.
- If the device receives continuous noise and exceeds a certain decibel, it can automatically alarm the controller.
- Support receiving the controller's MP3 file broadcast or speech through the network.
- Support the real-time transmission of audio and video collected by the built-in camera and microphone to the server for storage, playback, and real-time browsing.
- Built-in 1 Line audio output interface, realize external amplifier amplification, audio monitoring, etc.
- Built-in 1 MIC audio input interface, connected to external microphones and other equipment.
- Support standard SIP communication protocol, support two-way intercom with VOIP phone.
- When someone illegally demolishes it, it can automatically alarm the controller.
- Support linkage with other platforms through the network during emergency alarm, e.g. turn on the surveillance camera.
- Encrypt data in transit to prevent eavesdropping.
- The online status of the extension can be detected in real time, convenient for debugging, inspection and maintenance.

Specification

Model	TV-6903
Network Interface	Standard RJ45 interface
Transmission Rate	10/100Mbps
Communication Protocol	TCP/IP, UDP, IGMP, RTP
Audio Format	ADPCM, PCM, MP3, WAV
Audio Protocol	G.711 a/u, G.722, AAC
Audio Sampling Rate	16kHz ~ 48kHz
Audio Mode	16-bit CD quality
Built-in Speaker Impedance Power	4Ω, 3W
MIC Input Sensitivity	10mV
Audio Stream	16kbps ~ 256kbps
Audio Interface	Built-in MIC, Line out, Mic in
THD	<0.5%
SNR	>70dB
Video Format	H.264
Video Protocol	SIP, RTMP, HTTP
Video Stream	128kbps ~ 2Mbps
Camera	Built-in 1080P
Relay	3 channels, control the switch of electric control locks, cameras and other equipment
GPIO Interface	3 channels, support the feedback of door magnetic status, camera status, etc.
RS485 Interface	1 channel, connected to multi-color door lights
Dimension (L× H × D)	98×175×58mm
Power Supply	External DC power supply
Power Voltage	DC 12V
Working Temperature	-10℃~40℃
Working Humidity	10%~90% relative humidity, no condensation
Weight	1kg

Video Intercom Terminal
 Embedded software: IP intercom system V1.0
TV-6907



Description

With a built-in camera, the video intercom terminal can realize emergency alarm/intercom help function. It is anti-riot and waterproof, which is suitable for outdoor environment.

Feature

- * Adopt professional audio and video processing chip and embedded Linux operating system, stable and reliable; support 7*24 hours of uninterrupted working.
 - * Simple appearance, anti-removal screw design, high-strength alloy anti-oxidation panel.
 - * Support two-way network intercom with the video intercom controller.
 - * Used as a monitoring terminal to receive the monitoring of IP network server.
 - * If the device receives continuous noise and exceeds a certain decibel, it can automatically alarm the controller.
 - * Support receiving the controller's MP3 file broadcast or speech through the network.
 - * Support the real-time transmission of audio and video collected by the built-in camera and microphone to the server for storage, playback, and real-time browsing.
 - * Support standard SIP communication protocol, support two-way intercom with VOIP phone.
 - * When someone illegally forcibly demolishes it, it can automatically alarm the controller.
 - * Support linkage with other platforms through TCP during emergency alarm, e.g. turn on the surveillance camera.
 - * Encrypt data in transit to prevent eavesdropping.
- The online status of the extension can be detected in real time, convenient for debugging, inspection and maintenance.

Specification

Model	TV-6907
Operating System	Linux operating system
Network	Standard RJ45 interface, support POE power supply (optional)
Transmission Rate	10/100Mbps
Supporting Protocol	TCP/IP, UDP, IGMP, RTP/ONVIF
Audio Format	ADPCM, PCM, MP3, WAV
Audio Protocol	G.711a/u, G.722, AAC
Audio Sampling rate	16kHz~48kHz
Audio Mode	16-bit stereo CD quality
Built-in Speaker Impedance Power	4Ω, 3W
MIC Input Sensitivity	10mV
Audio Stream	16Kb~256Kb
Audio Interface	Built-in MIC, Line out, Mic in
THD	<0.5%
SNR	>70dB
Video Format	H.264
Video Protocol	SIP, RTMP, HTTP
Video Stream	128Kb~2Mb
Camera	Built-in, 1080P
External Interface	Three-channel input (can be configured with switch signals such as door magnetic) Three-channel output (can be configured with door lights, alarm linkage, electric locks, etc.)
Dimension (L×W×H)	2058×250×200mm
Power Supply	External DC power supply and POE power supply (optional)
Power Voltage	DC12V
Working Temperature	-10℃~+50℃
Working Humidity	10%~90% relative humidity
Weight	25kg

Video Intercom Management Controller
 Embedded software: IP intercom system V1.0
TV-6915



Description

With dual 15.6-inch 1920*1080 HD capacitive touch screens, it can perform one-way (point-to-point, zonal or all-zone) video intercom, two-way video intercom and monitoring to various terminals in the network. It is suitable for various call centers, alarm centers, duty rooms, leadership offices, conference rooms and other occasions.

Feature

- * Using professional audiovisual processing chip and Android operating system, it has strong interactivity, supports extension and customization, and can perform 7*24 hours of uninterrupted and stable operation.
- * The management controller can have a duplex video intercom with its intercom terminals or other controllers, and the intercom methods include hands-free, handle, and TALK button; during the intercom, it can prohibit the other party from speaking, control the door lock of the other party's terminal, and start recording the conversation content and screen.
- * Support hosting, the management controller can host its intercom terminals to other first-level controllers for management.
- * When the intercom terminal's call is busy/time-out and no one answers, the call information can be uploaded to other controllers.
- * Support call overriding function, the controller can forcibly switch the calling intercom terminals to establish a new call.
- * Support standard SIP communication protocol, carry out two-way intercom with VOIP phone, support multiple SIP account mode, and support connecting to multiple SIP servers;
- * Support connecting with the video conference MCU, and participants can join the virtual conference room for multi-party video conference.
- * Support command mode, the commander can issue orders to all members, and only the commander can hear the member's response.
- * The management controller can automatically monitor each intercom terminal under management (the default time for each channel is 10 seconds), and can also monitor any intercom terminal.
- * When there is noise, smashing, or illegal forced demolition at the intercom terminal, it can alarm the controller. When the intercom terminal alarms, it will be linked with other platforms through TCP connection. For example: turn on the surveillance camera.
- * Support encryption of data in transit to prevent others from eavesdropping and making calls more secure.
- * Support online monitoring function to monitor the online status of the intercom terminals in real time, which is convenient for debugging and maintenance.
- * Alarm status, intercom status, and online status can be indicated by icons, and device information can be added.
- * Support access control function, the host can unlock the room door corresponding to any intercom terminal, and can also unlock the single zone or all zones.
- * Support selecting relevant audio files for all-zone broadcasting and zonal broadcasting, and support the audio file loop playback mode.
- * Support scheduled broadcast in some zones, all zones, single zone, or single terminal mode, and support one-way broadcast function.
- * Support access to FM/MP3 smart players, CD players, MP3 players and other audio source equipment to broadcast.
- * The management controller can record the call process (local SD card recording), support automatic recording, and then query, play, store, and upload to the server.
- * Support information release function, receive audio and picture broadcasts from the server, release audio, video, pictures, text and other information to a single device, multiple devices, zones; delete, stop information release and perform other operations during the information release process.
- * Support connecting with digital IP PA system to carry out two-way intercom and broadcasting to broadcast terminals.
- * Support remote upgrade function, firmware upgrade can be carried out through the local area network, which is convenient and labor-saving.
- * Designed with versatile interfaces, including USB3.0 and USB2.0 interfaces, HDMI HD output interface, RS485 interface, meeting various functions.
- * With 1 HDMI output, it supports HDMI output on a large screen to achieve screen mirroring.
- * Support multi-channel VIS cascading to achieve more device management.
- * Support public network deployment, support long-distance calls across network segments, and no longer limited to intra-LAN connections.
- * Support multi-party video calls, the system supports up to 6-party video calls and 32-channel voice calls.
- * Support the display of multi-channel monitoring images in turn or single-channel monitoring images in full screen.
- * Support taking pictures and messages, records can be viewed later, and the file is saved locally.
- * Support import of electronic map, display alarm information positioning.
- * Support the installation of third-party APP applications.

Specification

Model	TV-6915
Operating System	Android operating system
Display Screen	1 5.6-inch HD capacitive multi-touch screen
Resolution	1920*1080
Network	Standard RJ45 interface
Transmission Rate	10M/100M/1000Mbps
Communication Protocol	TCP/IP, UDP, IGMP, RTSP, ONVIF
Antenna Interface	Support 2.4G (optional)
Internet	4G (optional)
Audio Format	MP3, WAV
Output Frequency	20Hz~20kHz
Audio Protocol	G.711a/u, G.722, AAC
Audio Sample Rate	16kHz~48kHz
Audio Mode	16-bit stereo
Built-in Speaker Impedance Power	4Ω, 3W
Audio Stream	16Kb~192Kb
Audio Interface	One 3.5mm input, one 3.5mm output
Microphone	One external mic pole (hands-free call); One external mic handle (handle call)
MIC Input Sensitivity	10mV
THD	0.1%
SNR	>85dB
Video Interface	1 HDMI output, support HDMI1.4
Video Protocol	SIP
Video Stream	512Kb~4Mbs
Camera	Built-in, 5M
Fingerprint Recognition	Standalone
RS485 & RS232	One 485 interface, connected to door light alarm equipment
IO Interface	Two relay normally open output (passive), two control input (passive), used to control door lock equipment and camera linkage
Other Interfaces	1 USB 3.0 interface, 3 USB 2.0 interfaces, 1 RS485 interface, 1 RS232 interface, 1 SIM card interface, 1 TF card interface, 1 TYPEC interface
Power Supply Mode	External DC power supply
Power Supply	DC12V2.5A
Power Consumption	20W
Working Temperature	-20℃~+50℃
Working Humidity	10%~90% relative humidity, no condensation
Weight	4.5kg
Dimension (L×H×D)	912*297*91mm
Installation Method	Desktop or embedded installation

Visual Intercom Extension
IP internal communication systemV1.0
TV-6933



Description

Built-in camera, can realize the emergency call alarm/intercom help function, suitable for indoor/outdoor environment installation, waterproof, can carry out one-way (to point, partition or whole area) visual speech, two-way intercom and monitoring to all kinds of terminals in the network.

Feature

- * Professional audio and video processing chip and embedded Linux operating system, stable and reliable, to meet the 7*24 hours of uninterrupted stable operation.
- * Simple appearance, beautiful lines, anti - detachable screw design, high strength alloy anti - oxidation panel.
- * Network two-way intercom with visual intercom host.
- * Can receive IP network host monitoring, monitoring, monitoring header can be used.
- * If the device is in continuous noise and exceeds a certain decibel, it will automatically alarm the host.
- * Support to receive host MP3 files over the network broadcast or shout.
- * It supports real-time transmission of audio and video captured by built-in camera and microphone to the server for storage, playback and real-time browsing.
- * Built-in 1 group of line audio output interfaces, to achieve external amplifier amplification, audio monitoring, etc.
- * 1 set of MIC audio input interfaces are built in, which can be used for external pickup of audio microphone and other devices.
- * Support standard SIP communication protocol, and VOIP phone two-way intercom.
- * When someone for illegal forced demolition, you can automatically alarm the host.
- * When calling alarm, it supports linkage with other platforms through network connection. For example: turn on the surveillance cameras.
- * Encrypt the data in the transmission to prevent others from eavesdropping and make the call more secure.
- * The online state of the extension can be detected in real time, which is convenient for debugging, overhaul and maintenance.

Specification

Model	TV-6933
Network Interface	Standard RJ45 interface
Transmission Rate	10/100Mbps
Support Agreement	TCP/IP, UDP, IGMP, RTP
Audio Formats	ADPCM, PCM, MP3, WAV
Audio Agreement	G.711 A/U, G.722, AAC
Audio Sampling rate	16 KHZ ~ 48 KHZ
Audio Mode	16 bit CD sound quality
Built-in Speaker Impedance Power	4 Ω, 3 w
MIC Input Sensitivity	10mV
Audio Stream	16 KBPS to 256 KBPS
Audio Interface	MIC, line output, external microphone input
Harmonic Distortion	< 0.5%
Signal to Noise Ratio	> 70 dB
Video Format	H.264
Video Agreement	SIP, RTMP, HTTP
The Video Streaming	128 KBPS ~ 2 MBPS
Camera	Built-in, 1080P
Relay	3 channels, can realize the control of electronic lock, camera and other equipment switch
GPIO Port	3 channels, can achieve feedback gate magnetic state, camera state and other functions
RS485 Interface	1 way, support connect multi - color door lamp
Size (L×H×D) (mm)	179 * 300 * 132
The Power Supply Mode	External DC power supply
Working Voltage	DC 12V
Working Temperature	- 20 ℃ ~ + 80 ℃
Working Humidity	10% ~ 90% relative humidity, no condensation
Weight	5.0 kg

Centralized Power Supply Box
TV-P6900S



Feature

- * Support 18-channel DC power output, single-channel independent protection, easy installation.
- * Support over-current protection and self-recovery function.
- * Support single-channel status display; single-channel short circuit does not affect the normal operation of other channels.

Specification

Model	TV-P6900S
Input	Voltage: 85~305VAC Frequency: 47~63Hz Power factor: 0.95 Maximum input current: 2.1A Maximum surge current: 35A
Output	Number of channels: 18 Maximum single-channel output current: 1.5A Output voltage: 12V Maximum total output power: 320W Efficiency: 85.6% Maximum capacitive load: 5000uF Output voltage accuracy: ±1% Linear regulation rate: ± 0.3 % Load regulation rate: ± 0.5 % Output ripple: Typical 60mV (Maximum 150mV) Temperature drift coefficient: ±0.03%/°C Output short-circuit protection: long-term short-circuit protection, self-recovery Single output over-current protection: 1.85A protection, self-recovery Output over-voltage protection: 16.2V, self-recovery Over-temperature protection: self-recovery Output voltage adjustment range: 10~13.2V
Isolation Voltage (<10mA/60s)	Input and grounding: 2000VAC Input and output: 4000VAC Output and grounding: 500VAC
Insulation Resistance (500VDC)	Input and grounding: 100MΩ Input and output: 100MΩ Output and grounding: 100MΩ
Working Temperature	-30°C~70°C
Storage Temperature	-40°C~85°C
Working Humidity	20~90%RH
Storage Humidity	10~95%RH
Power Safety Standards	IEC/UL62368-1, GB4943.1, IEC60950-1, EN62368-1
Power Safety Class	CLASS1
MTBF	>250,000H
Dimension	352*340*78mm
Weight	5.9kg
Cooling Method	Forced air cooling
Installation Method	Wall mounted installation