

Digital Network PA & VA Integration Public Address, Voice Alarm, BGM & Paging System

Digital Network Public Address & Voice Alarm System



2024 Catalogue 1st.



Guangzhou Baolun Electronics Co., Ltd

Add: Building A13-1 Yiku Industrial Park, The Hills, Dognyi Road Panyu District Guangzhou China 511492

Tel: +86-20-34549655, 84593197, 31104730, 31104729 Fax: +86-20-84548799

Website: www.itctech.com.cn E-mail: info@itc-pa.com.cn

* Specifications are subject to change without notice.

PROJECT REFERENCE



Beijing Olympic Forest Park Beijing Olympic Forest Park Guangzhou Asian Games Swimming and Diving Stadium



Asian Games NBA Stadium Asian Games NBA Stadium Guangzhou Police Office Guangzhou South Train Station



Shanghai World Expo - Oman Pavilion Shanghai World Expo - Pakistan Pavilion Shanghai World Expo - Ireland Pavilion Shanghai World Expo - Turkmenistan Pavilion



Shanghai Oriental Pearl Beijing Subway Station Beijing-Tianjin inter-city Express Beijing University of Technology Gymnasium Stadium



Shangri-La Hotel, Guangzhou Guangzhou Colgate-Palmolive Co. Qinghai People's Hospital Zhongshan University



Company Introduction

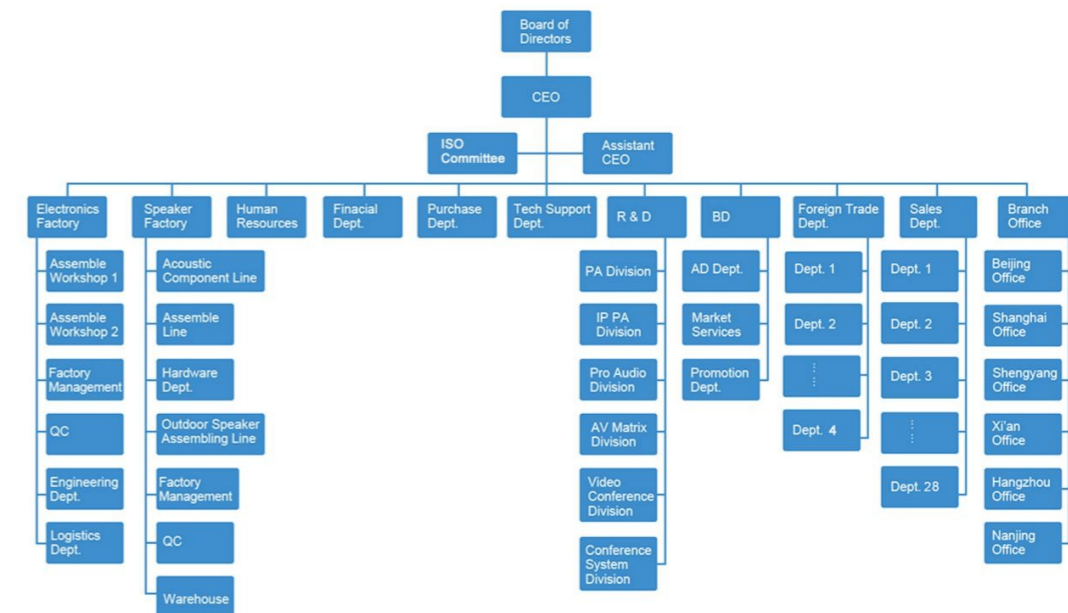
Guangdong Baolun Electronics Co., LTD. (ITC) was established in 1993, located in Panyu district of Guangzhou. ITC is the No.1 and the largest integrated supplier of audiovisual & lighting systems, integrating R&D, production, sales and service together in China for more than 30 years. ITC owns 4 office buildings, 6 R&D centers and 5 factories. There is also an industry-leading intelligent manufacturing industrial park of over 300,000 square meters under construction, which is expected to be put into operation by the end of 2023. We have 1200 R&D engineers, 2000 pre-sales and after-sales technicians, 142 sales departments, all totally more than 6000 employees.

ITC can provide integrated solution from PA system, IP intercom system, Voice evacuation system, HD video conference system, 5G digital conference, Paperless conference, Interpretation system, Central control system, Professional sound system, LED screen, Stage light & Architectural light, etc. We are the official supplier for important events, including 2008 Beijing Olympic Games, 2010 Shanghai World Expo, 2010 Guangzhou Asian Games, 2016 Hangzhou G20 Summit, 2016 Turkey expo, 2022 Beijing Winter Olympics, India subway, USA chain shops, Guyana national conference, Uzbekistan national defense conference, Five Nigeria national airport, CBE Ethiopia bankOur worldwide successful projects are more than 1.5 million cases, and itc products have been exported to more than 100 countries around the world.

All of our products are developed and manufactured by ourselves. Our products are compliant with CE, RoHS, EN54, UL, CCC, NOM certificate.

ITC possesses more than 3000 intellectual properties, including appearance patents, software copyrights, utility model patents and invention patents, and has won the honorary titles of "Quality Product", "Famous Brand" and "Most Competitive Brand" for many years. ITC is the "High-tech Enterprise" in China.

Company Organization



Our Production Lines

A group of highest technology equipment are used to strengthen the reliability and output capacity: SMT machine, reflow oven & numerical control cutting machine. 95% PCB of the equipments are made by SMT machine to ensure quality consistency and higher reliability. The numerical cutting machines enhance the equipment in elaborate & elegant level. A comprehensive process of tests are be involved: drop test, vibration test, aging, Hipot & RoHS test.

Certificates:

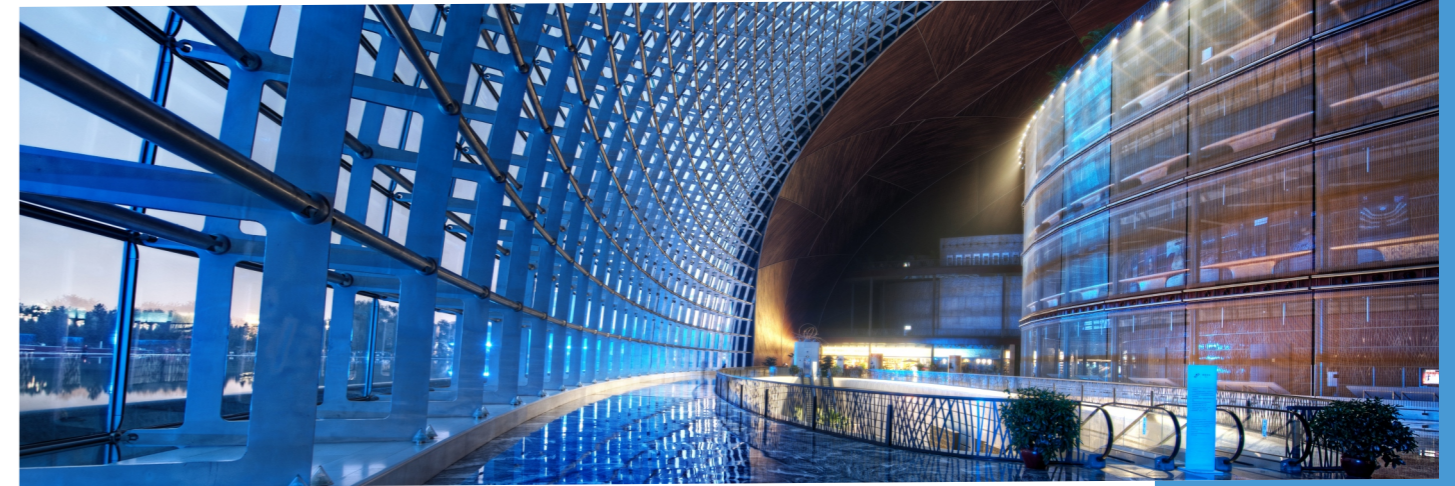
CCC, ISO9001, CE & RoHS, IEC60914. Parts of our product are complied with certificates: CB, SASO, ETL, UL, FCC, EN54-16 and EN54-24. Parts of loudspeakers are certified by waterproof, dustproof, fire-proof & explosion-proof.



Headquarter



Factory



CONTENTS

Project Reference	01
Company Profile	02
Certifications	06
HISTORY	07

Voice Evacuation Alarm System VA-6000

EVAC System Features	09
System Overview and Design Principle	11
EVAC System Diagram	13
EVAC System Software VA-6000ST	17
Digital Network PA & Voice Alarm Controller VA-6000MA	19
8 Zone Voice Alarm Amplifier VA-P8500S	21
8 Channel Changeover VA-6000MS	23
Voice Recorder VA-6000RC	25
Digital Amplifier VA-P120/VA-P240/VA-P350/VA-P500	26
Digital Amplifier VA-P2120/VA-P2240/VA-P2350/VA-P2500	27
Digital Amplifier VA-P4120/VA-P4240/VA-P4350/VA-P4500	28
DC Power Supply and Battery Charger VA-6000BC	29
Fireman Microphone VA-6000FM	31
Remote Paging Microphone VA-6000RT	33
Remote Microphone VA-6000RM	35
Microphone Extension Unit VA-6000EM	37
Terminal Detector VA-6000T	37
Controller VA-6000G	38
Monitor VA-6000TB	39
IP PA Intercom Unit T-6711A	40
Moment KVM system client management software TV-6100R	41

All in One Rack-mounted Public Address and Voice Evacuation System VA-6200

System Features	43
EVAC System Diagram	45
Controller VA-6200MA	46
Extension Controller VA-6200MS	47
Paging Microphone VA-6200RM	48

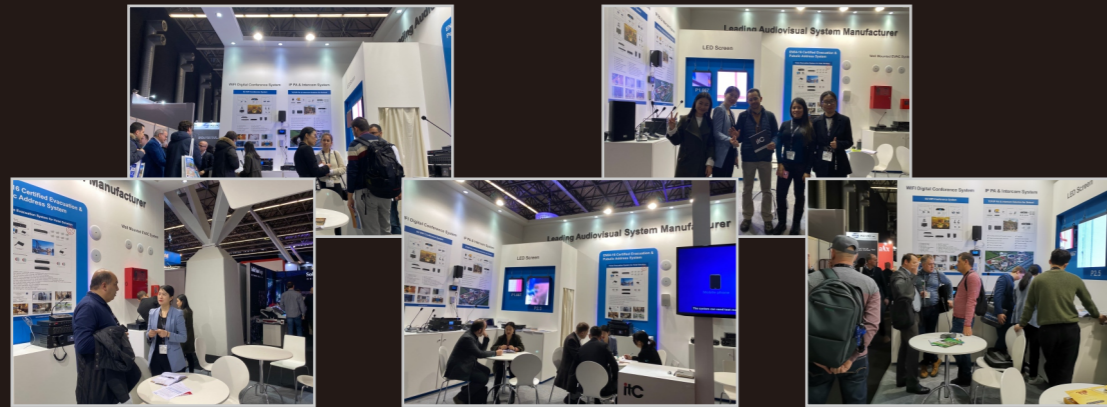
Fireproof Speaker

Weatherproof Horn Speaker VA-710A	50
Weatherproof Aluminum Horn Speaker VA-720G	50
Weatherproof Aluminum Horn Speaker VA-720R	51
Landscape Garden Speaker VA-1910S	51
Wall Mount Speaker VA-774H/VA-775H/VA-776H/VA-774HW/VA-775HW/VA-776HW	52

Showroom



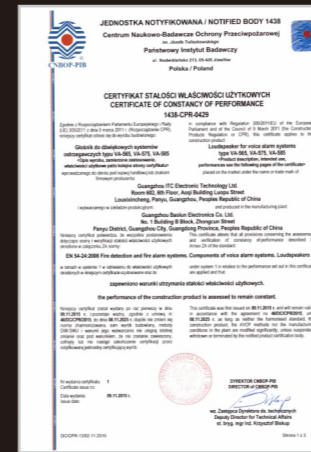
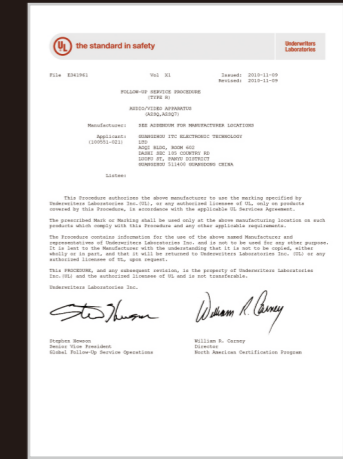
Exhibitions



Seminar



Certifications



HISTORY



Year 1993

ITC was founded in Guangzhou, regarded as pioneer of Digital Public Address System in China.

Year 1995

ITC successfully registered trademark ITC in China.

Year 1998

The first full-intelligent PA system was successfully developed and launched to the market.

Year 2000

ITC set up 8 sales subsidiaries and technical assistance centers in Guangzhou, Beijing, Shanghai, Hangzhou, Nanjing, Xi'an, Shenyang and Chengdu. ITC also established proxy services agencies in 48 provinces all over China.

Year 2001

The first digital network PA system was successfully developed and launched to market.

Year 2002

Due to speed business expansion, ITC set up numerous large production plants in Guangzhou. The whole company broadened to six large plates: four production plants + marketing and logistics center + R & D center; totally more than 800 manufacturing workers.

Year 2003

ITC developed full-digital IP PA system; became the world's first IP PA R & D manufacturer. In the same year a full range of products passed quality inspection, 3C, CE, RoHS and other domestic and foreign certification.

Year 2004

For successive years, ITC was awarded as "The Most Competitive Brand" and "Top Ten PA Brand" by domestic renowned media.

Year 2005

In order to meet the needs of global strategy, ITC had registered in 35 countries "ITC" trademark, and collaborated with 56 high-quality foreign strategic partners.

Year 2006

ITC was awarded as "Intelligent Building Quality Products," "Intelligent Building Leading Brands" as etc by China Intelligent Building Industry Association. There' s no replacement in the professional field.

Year 2007

The first most advanced Fire Alarm Voice Evacuation System was successfully developed. Till the end of 2007, ITC had won totally 12 core technology and design patents.

Year 2008

ITC successfully marched into 2008 Beijing Olympic games: the Olympic Forest Park, Capital Stadium, Beijing Industry University Gymnasium, and the Olympic Media MCI sign Center and other key Olympic venues.

Year 2009

ITC successfully marched into the Shanghai World Expo venues including Oman, Ireland Museum, Museum of Turkmenistan, Pakistan, and Iran and so on. In the same year, she went into Asia's largest railway station (South Station in Guangzhou), Beijing Subway, Beijing-Tianjin inter-city Express and other famous projects.

Year 2010

ITC successfully marched into 2010 Guangzhou Asian Games Venues including Gymnasium, NBA Stadiums, Swimming Pool, Bicycle Roller Skating Center, the Athletes Village, Main Press Centre, Media Village, Technical Officials Village and other logistics service area. ITC cooperated with numerous well-known enterprises the following eminent projects: the Polish National Central Banks, the International Financial Building of Azerbaijan, the Romanian Five-star Hotel, the Dubai Seven Star Hotel, the Singapore Racecourse, the USA Florida Intercontinental Hotel, the University of Toronto, the National Museum of Istanbul, the Turkey Istanbul High School, the London Art Galleries and so on.

Year 2011

ITC successfully installed Network Audio System for Shenzhen 2011 World Universiade Olympic Games. Move into new 20,000 square meters manufacturing plant, SMT machine, digital PC controlled punching machine been imported. Cobranet network system and Linux Network Audio System have been launched. Launched new digital conference system.

Year 2012

ITC launched its Cloud-based HD Video Conference System to realize the conference meeting face to face by video without geographical limitation.

Year 2015

ITC installed IP PA & Intercom System in the Subway Center of Chanakyapuri New Delhi India.

Year 2016

ITC installed Evacuation Voice Alarm Public Address System and IP Network Intercom System to EXPO 2016 Antalya in Turkey.

Year 2017

ITC LED Screen, Stage lighting, architecture lighting factory established. ITC Turn-key solution applied to UNASUR Building , Bolivia.

Year 2018

ITC conference system used in the United Nations Convention. Large conference system applied to Ethiopia Afar National Regional State Finance & Economic Development Bureau, Africa.

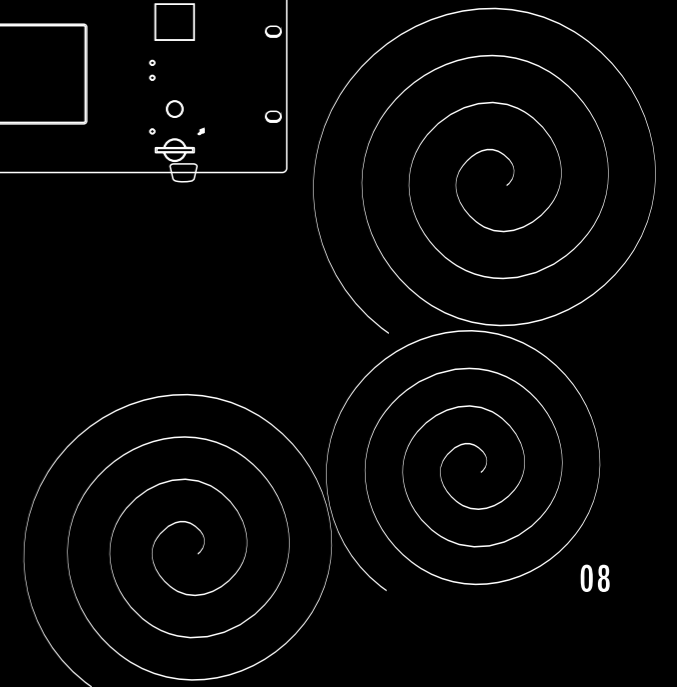
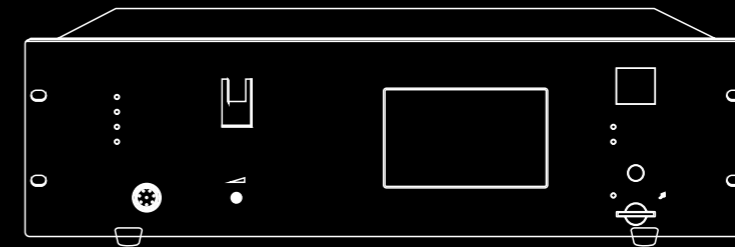
Year 2019

ITC own independent R&D building which area is about 4,200 square meters. KTV One-stop Solution applied to Grand Park Hotel Myanmar.

Year 2020

Foundation Laying Ceremony of ITC Industrial Park. ITC 243.3m² P10 Outdoor LED video Wall applied to Vincom Mega Mall Ocean Park City Vietnam.

Voice Evacuation Alarm System VA-6000



Voice Evacuation Alarm System

Product Overview

Voice evacuation alarm system is based on local area network (LAN) hardware technology and network protocol, which is integrated with fire alarm & public address system. Transmit digital audio via LAN, to not only ensure that the audio signal can achieve long-distance transmission, but also solve signal attenuation, environmental electric/magnetic harassment and other issues in long-distance transmission; Adopt network architecture transmission, significantly reducing the cost of system construction and pre-wiring, which can bring convenience to system expansion and system maintenance at later stages.

Voice evacuation alarm system can meet the various needs of fire broadcast, announcement broadcast, background music broadcast and etc. It's controlled by modular MPU with high investment efficiency, while supporting linkage with fire alarm controller of multi-wire-mode or bus-mode, and interface problems between different systems cease to exist. With Self-developed ASD system automatic fault diagnosis technology, SIM speaker lines automatic detection technology and DLB data lines automatic redundancy technology, system works more safely, stably and reliably, and significantly shorten the pre-purchase period and reduce future maintenance costs.

Voice evacuation alarm system adopts modular design and modern technology. Long-term industry experience accumulation and comprehensive system tests ensure its stability. System can play background music in the absence of fire disaster, and once the fire is detected, system will immediately enter into pre-set alarm state. System is powerful, user-friendly and easy to operate. System is not only widely used in stadium (gymnasium), financial centers, hotels, office buildings, commercial centers, railway stations, airports, exhibition halls and etc., but also suitable for industrial areas such as petrochemical, electric power, metallurgy, iron and steel base and etc.

Product Features

EN54-16, EN54-24 standard design

Conform with European voice alarm control and indicating equipment standards EN54-16 and EN54-24, according to the emergency voice communication system design, installation rules BS5839-9, compatible with 3-wire and 4-wire standard wiring.

Integrating both professional voice alarm and public address as system functions

Integrate programmable voice broadcast, voice evacuation and background music timed play functions into one system. Easy operation, flexible configuration.

More advanced technology, more reliable system

With advanced ASD system automatic fault diagnosis technology, SIM speaker lines automatic detection technology and DLB data lines automatic redundancy technology, system works more safely, stable and reliable

Based on local area network (LAN) hardware technology and network protocol

Only one CAT-5 cable is needed between system devices, which can simultaneously transmit multiple high-quality digital audio signals and control signals. System also supports line-topology wiring, star-topology wiring. Wiring is simple, easy and low cost.

CAN bus linkage control interface, up to 592 input / output control interfaces

System controller, changeover and 8-zone amplifier all have CAN bus-mode linkage control interface and multi-wire-mode linkage control interface. System supports up to 592 input/output programmable linkage control interfaces, which can facilitate wiring and linking with third-party systems to achieve functional complementation.

Real-time monitor running status, emergency and status logs ≤2000

System can real-time monitor bus loops between devices, also can achieve automatic fault diagnosis, data backup, redundancy and recording fault status (≤2000). It's safe, stable and reliable.

Visualized user interface, one key to call, upgrade user experience

System controller (VA-6000MA) adopts 5-inch full-color LCD touch screen design, with visualized user interface and abundant functions. It achieves centralized management and is easy to operate. Emergency button on panel can increase response speed effectively in case of emergency to avoid any possible mistakes.

Flexible zone configuration

System controller can transmit 255-channel matrix audio signals, which can build system with 56 power-zones and system with 255 audio-zones. It can be provided for different solutions from small scale, medium scale to large scale places, where needs economic and hi-tech advanced system solution.

Work with Class-D digital amplifier to achieve enjoyment of Hi-Fi audio quality

System uses multi-channel CLASS-D digital power amplifier which is developed with professional sound concept. It has wider frequency response range, lower SNR and better sound quality, while the energy consumption is in the industry-leading level.

Product Functions

The host is integrated with built-in voice alarm modules of 4 independent channels

The host is integrated with independent emergency voice information, warning information and background music modules. The users can switch the functions freely according to the environment, languages and preferences.

13 channels voice information can be output to difference power zones and audio source zones

The system supports 1 channel emergency Mic input, 2 channels emergency voice information, 1 channel warning information, 1 channel background music, 4 channels AUX input (the first channel also support XLR Mic input), 4 channels remote Mic. All these inputs can be simultaneously output to different zones.

Multiple programmable voice alarm modes

The alarm modes can be neighboring zones, selected zones (including all zones), which makes the system easy to operate and applicable in different environment.

Multiple operation modes, off-line operation achievable

The system host adopts visible embedded man-machine operation interface and supports multiple PC software operated at the same time.

Program Timing

The system host is built in with MP3 player and program timer, which enables the timing playing diversified and flexible. The users can set the timing programs according to different requirements.

Local program input

The system host, 8 zone amplifier and 8 channel changeover have local program input port, which can input music and Mic audio signal.

Telephone Input

Integrated intelligent telephone interface makes the system easy to realize online remote operate and control via system network. The system also supports event trigger call, can be set re-calling times when no answering.

One key touch for emergency alarm and one key touch for reset

The system host supports one key touch for emergency alarm and one key touch for reset, ensuring the system responses quickly at emergencies.

Remote broadcast and remote control

The system host can connect 4 remote Mics at the least distance of 1km and supports remote program playing, zone control, one-key touch for reset, local programs inserting, etc.

Amplifier backup

8 zone amplifier and changeover have amplifier backup function, ensuring the backup amplifier can take replace the master amplifier automatically when it fails to work.

Host backup

The system host supports hot backup. The added backup host can replace the master host automatically when it fails to work, which makes the system keep working continually.

Two volume control relay modes

The relay modes of three-wire volume control and four-wire volume control enable the system flexibly applied in different places.

Real-time state display

The system equipments have plenty real-time state indicators like power supply, working state, failure indication, etc. The users can check equipments' operation state directly and quickly.

Real-time state output

The system host is equipped with failure and working state output interface. Cascade connected with the third-part equipments, the host can send real-time operation states of the system.

Third-party equipment online interface

The system host has third-party equipment online interface. It is convenient to monitor and control the system remotely.

Reliability in any emergency situation!

Please leave the building immediately!!!

Built-in MP3 module for audio signals-close to CD quality

monitored to comply with EN 54-16

Monitored Fireman's Microphone

The fireman's microphone, which is used to broadcast life-saving instructions in an emergency, is permanently monitored. A fault on the microphone capsule or on the microphone line will immediately signal a fault indication.

Fireman's Microphone

monitored to comply with EN 54-16

Digital Remote Mic

8 Program Message Modular Inputs

Audio Input from external system

External trigger for evacuation message

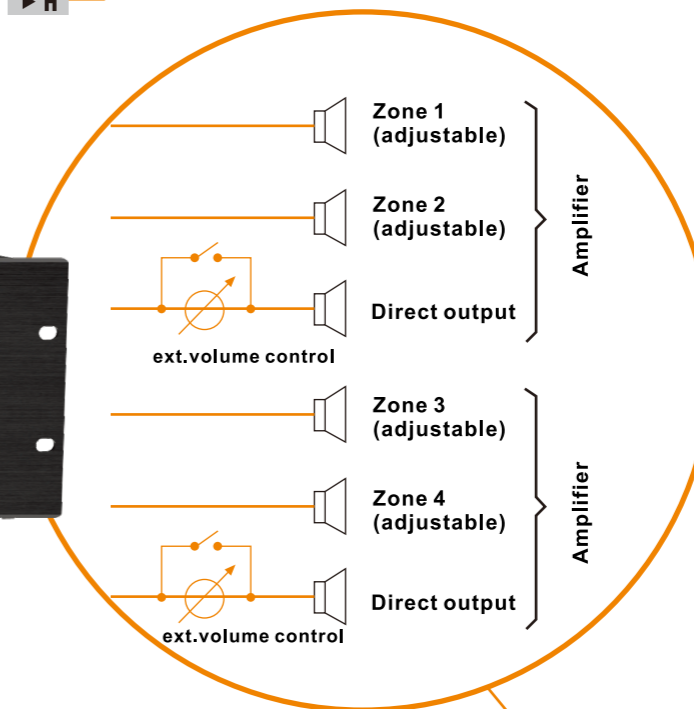
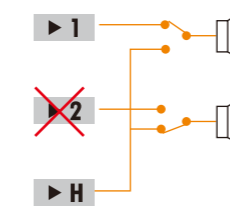
External trigger for alert message

monitored to comply with EN 54-16



Built-in stand-by amplifier

monitored to comply with EN 54-16



monitored to comply with EN 54-16

2 monitored inputs for trigger of evacuation and alert message

These 2 volt-free inputs, e.g. coming from a fire detection system or from external push-buttons, are used to trigger the evacuation and alert message into all zones. These lines are also monitored and a break or a short circuit of the lines will immediately note a fault indication.

Integrated and monitored battery backup

The integrated maintenance-free 24V high-power battery supports uninterrupted operation of the voice alarm system for 30 minutes and standby for 72 hours. The integrated and intelligent battery charger is also monitored and can detect a faulty battery by means of the charging current.

monitored to comply with EN 54-16

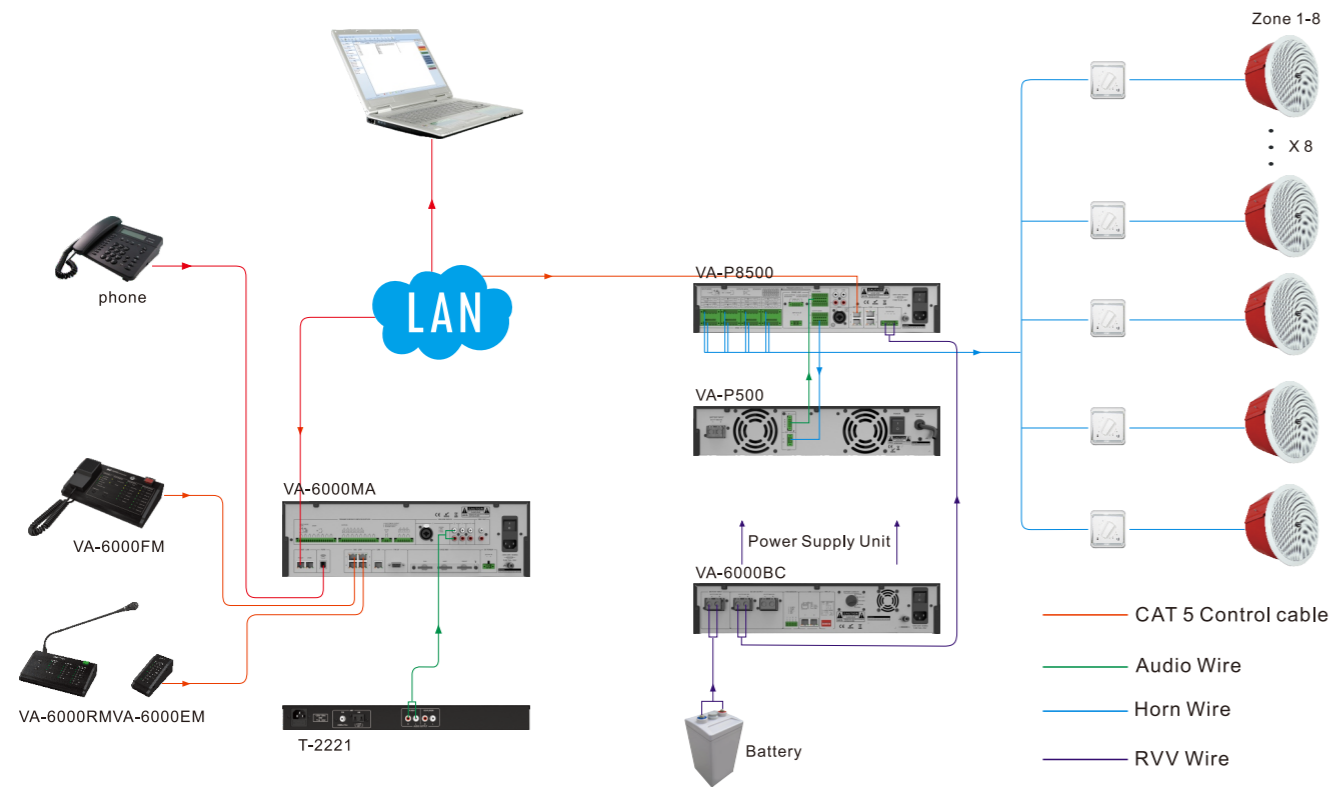
Fault logging

The system can store up to 500 fault messages indicating date and time of occurrence in a non-volatile Error. The data is therefore secure and retained during a total power breakdown.

Loudspeaker line monitoring

All loudspeaker lines are continuously monitored. The monitoring is based upon speaker loop line supervision. This method ensures that a faulty loudspeaker line maintenance costs are significantly reduced.

8 Zone EVAC System Connection Template-1



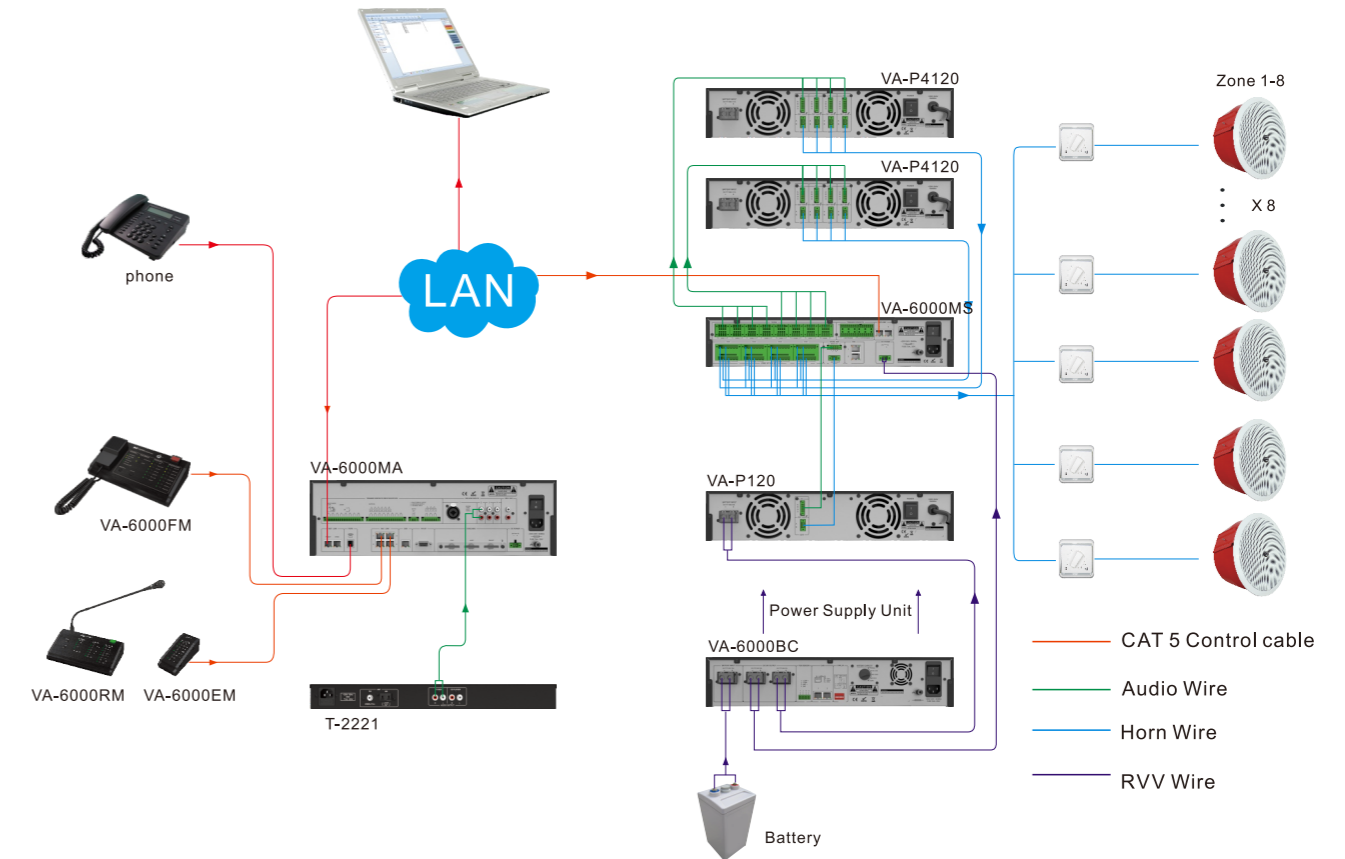
Application solutions

For daily back ground music, business paging announcement and telephone paging announcement, when emergency incidents happens, it can also be for emergency notification and emergency paging broadcast, which is very suitable for office buildings, intelligent building, hotel, exhibition center, the station and other medium and small places.

Application solutions

- * 1 unit system main controller VA-6000MA, built-in EVAC, ALERT, BGM, CHIME, TEST voice message, support 3 line inputs, 1 mic input, 1 recorded message input and 8 channel Fire alarm collection interface.
- * 1 unit three in one audio source, with built-in CD player, AM/FM tuner, MP3 player, can simultaneously output 2 audio sources.
- * 1 unit Remote fire alarm paging mic VA-6000FM and 1 unit business paging mic VA-6000RM, for the easy remote paging and system management and control.
- * 1 unit VA-P500 digital amplifier as standby amp, when the built-in amplifier of VA-P8500S is with faulty, it will switch to the standby amplifier automatically, to ensure the system work safely. Enter power saving mode automatically when no signal input.
- * 5 units volume control (VA-691C/692C/693C/694C/695C) for users to adjust the volume.

8 Zone EVAC System Connection Template-2



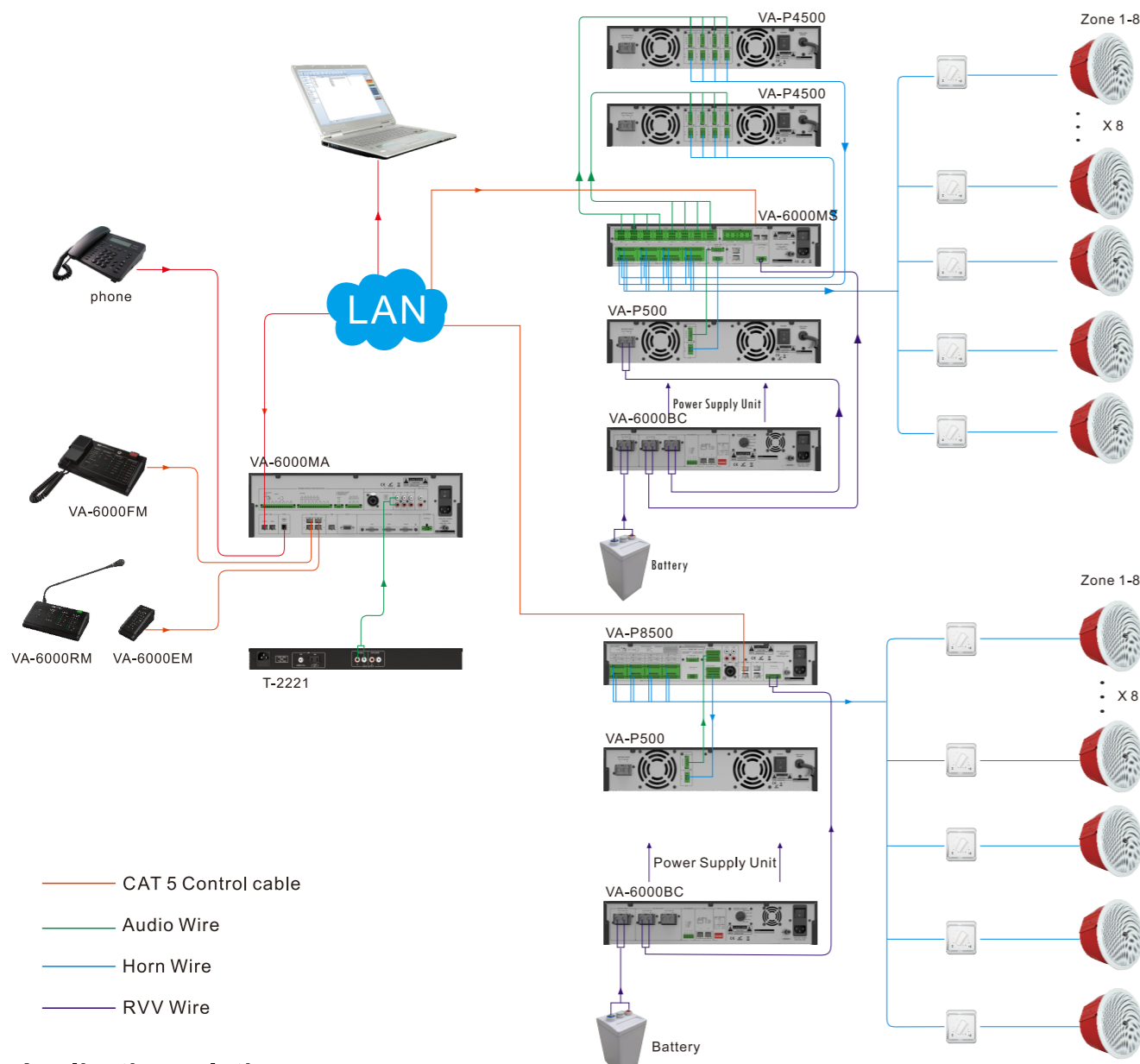
Application solutions

For daily back ground music, business paging announcement and telephone paging announcement, when emergency incidents happens, it can also be for emergency information and emergency paging broadcast, which is very suitable for office buildings, intelligent building, hotel, exhibition center, the station and other medium and small places.

Application solutions

- * 1 unit system main controller VA-6000MA, with built-in EVAC, ALERT, CLEAR, TEST voice message, support 3 line inputs, 1 mic input, 1 recorded message input and 8 channel Fire alarm collection interface.
- * 1 unit changeover machine, to switch between the VA-P4120 and VA-P120 to ensure the system working safely.
- * 1 unit three in one audio source, with built-in CD player, AM/FM tuner, MP3 player, can simultaneously output 2 audio sources.
- * 1 unit Remote fire alarm paging mic VA-6000FM and 1 unit of business paging mic VA-6000RM, for the easy remote paging and system management and control.
- * 2 units class D amplifier VA-P4120 and 1 unit of class D amplifier VA-P120, distribute the network signal and back ground music received from VA-6000MA to the different zones, 2 units of VA-P4120 is the main amplifier, and the 1 unit of VA-P120 is the standby amplifier, when the main amplifier is with faulty, the stand by amplifier will work automatically, and will enter power saving mode automatically when there is no signal.
- * 1 unit DC power and recharger VA-6000BC, when the system power is with fault, it supply the power to the system to ensure it working continuously.
- * 5 units volume control (VA-691C/692C/693C/694C/695C) for users to adjust the volume.

16 Zone EVAC System Connection Template-3



- CAT 5 Control cable
- Audio Wire
- Horn Wire
- RVV Wire

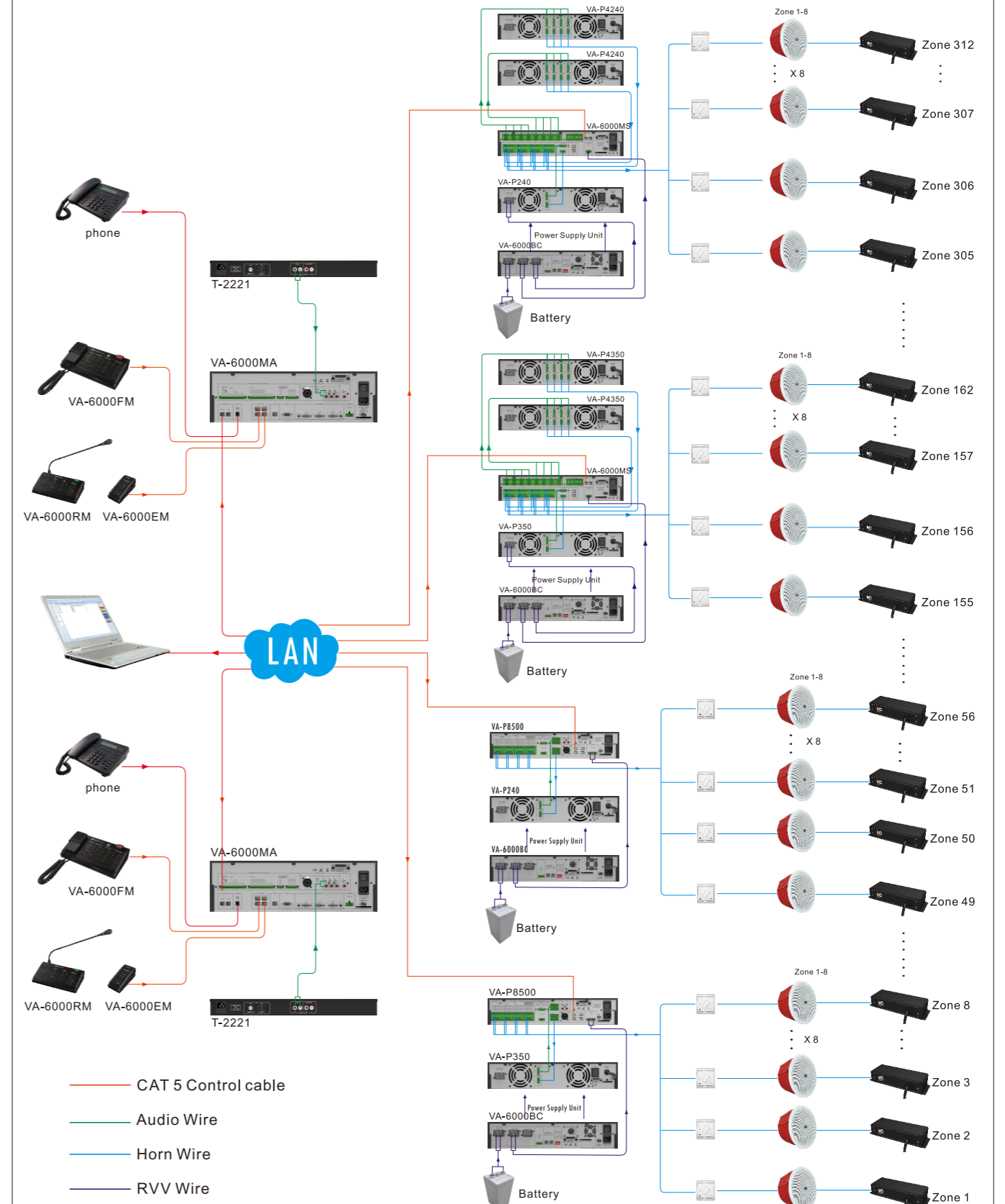
Application solutions

One system with two different framework, it can satisfy different requirements of the users. For daily back ground music, business paging announcement and telephone paging announcement, when emergency incidents happens, it can also be for emergency information and emergency paging broadcast, which is very suitable for office buildings, intelligent building, hotel, exhibition center, the station and other medium and small places.

System equipment list

- * 1 unit system main controller VA-6000MA, with built-in EVAC, ALERT, BGM, CHIME, TEST voice message, support 3 line inputs, 1 mic input, 1 recorded message input and 8 channel Fire alarm collection interface.
- * 1 unit 8 zone digital amplifier VA-P8500S, built-in 500W digital amplifier and 8-CH power partition, distribute the network signal and the back ground music received from the host via CAN cable to different zones. To be connected with an extra VA-P500 digital amplifier as standby amp, when the main amplifier is with faulty, the standby amplifier will take over automatically, to ensure the system work safely.
- * 1 unit changeover machine, to switch between the VA-P4500 and VA-P500 to ensure the system working safely.
- * 1 unit three in one audio source, with built-in CD player, AM/FM tuner, MP3 player, can simultaneously output 2 audio sources.
- * 1 unit Remote fire alarm paging mic VA-6000FM and 1 unit of business paging mic VA-6000RM, for the easy remote paging and system management and control.
- * 2 units class D amplifier VA-P4120 and 1 unit of class D amplifier VA-P120, distribute the network signal and back ground music received from VA-6000MA to the different zones. 2 units of VA-P4120 is the main amplifier, and the 1 unit of VA-P120 is the standby amplifier, when the main amplifier is with faulty, the standby amplifier will work automatically, and will enter power saving mode automatically when there is no signal.
- * 1 unit VA-P500 digital amplifier as standby amp, when the built-in amplifier of VA-P8500S come out faulty, it takes over automatically, to ensure the system work safely. Enter power saving mode automatically when no signal input.
- * 1 unit DC power and recharger VA-6000BC, when the system power come out fault, to supply the power to the system to ensure it working continuously.
- * 5 units volume control (VA-691C/692C/693C/694C/695C) for users to adjust the volume.

312 Zone EVAC System Connection Template-4



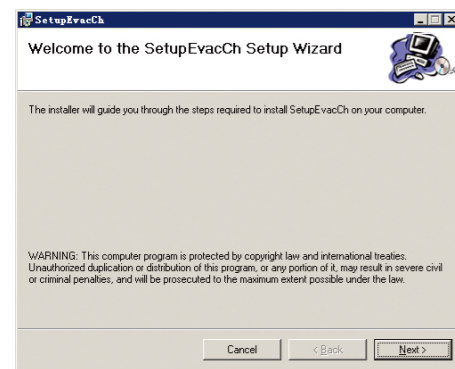
- CAT 5 Control cable
- Audio Wire
- Horn Wire
- RVV Wire

EVAC System Software
VA-6000ST



Descriptions

- * It is operated in the computer to connect the controller by LAN, supporting operation in Windows2003/Windows XP/Windows7/Windows10.
- * The operations of the system software are including Zone Control, Status Monitor, Offline Program Edit/Upload/Download, Event Record, System Configuration, User Management, etc.
- * Guiding System configuration, quickly complete the system basic configuration
- * Automatic and timing playing function to achieve timing programmed playing in the designated zones for unattended operation.
- * Built-in automatic timing correction when software launch.
- * It supports the login with multiple user passwords and the synchronous operation by multiple software platforms.
- * It supports system configuration import and export to ensure the safety of the configuration datas.



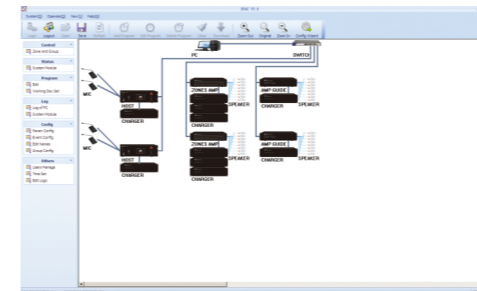
Setup Appearance

Double-click the installation folder, then just click "Next Step" one by one to finish the software installation, which is the system default installation way and very conveniently.



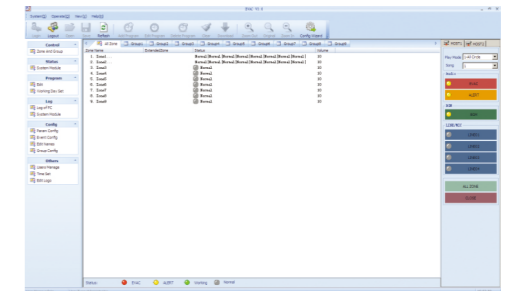
Login interface

After running the software, pls login the correct user name and password for the sake of system safety.



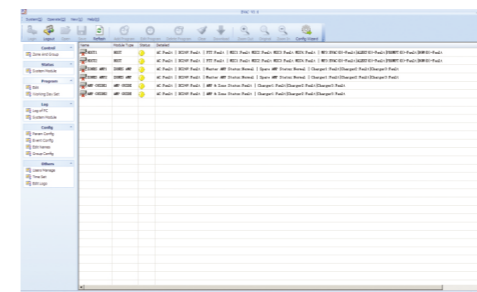
Module configuration interface

The module information of current configuration will be graphics to make sure the intuitive understanding and quick operation.



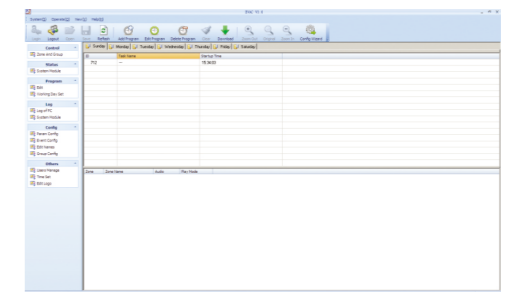
Zone operation interface

Quick playing the evacuation voice, warning voice and BGM. It controls the switch on or off status of the zones, the volume adjustment, line/mic selection and also real time monitor the zone operation status.



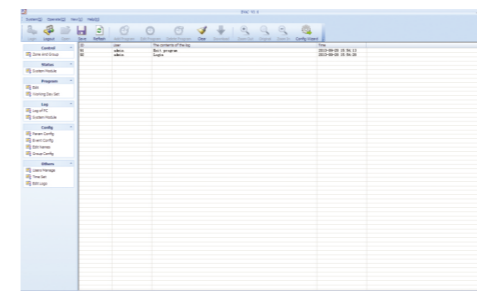
Status inquiry interface

A real-time monitoring to the operation status of the system controller, zone amplifier, changeover, mic, and battery charger.



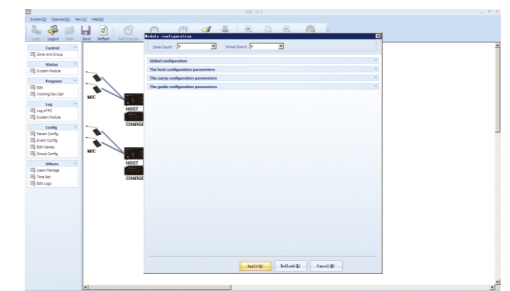
Program timing interface

Edit the system's automatic operation procedure in 24-hour 7 days , including BGM playing, zone timing switch on and off status, volume adjustment and zone selecting.



System daily record interface

It records the log of the PC operation, system controller, zone mixer amplifier, changeover operation and monitoring.



Configuration module interface

The configuration module consists of system parameter, emergency event, name modification and grouping. The configuration parameters for controller, zone amplifier, changeover, contact , partition and grouping, etc., which are applied to the basic configuration setting.

Digital Network PA & Voice Alarm Controller
VA-6000MA



Descriptions

VA-6000MA is a core management and control device for public address broadcasting and emergency voice alarm broadcasting. It can be directly controlled and system status checked on a 5-inch HD touch screen. It support user-defined function and system control through PC management software, automatic monitoring and management to physical partition status and terminal equipment, automatic executing the pre-programming control, etc. Built-in programmable trigger input and output interfaces, to achieve integrated control to the sound-light alarm module (as well as connected to the bus fire linkage controller).

Features

- * 5 inch HD color touch graphical man-machine operation interface.
- * One button for emergency alarm.
- * Support zone selection, zone distribution, grouping operation, with independent zone volume adjustment.
- * Support user-defined zone name, group name, host name (multi-host network), easy to operate and manage.
- * Support event trigger, timing trigger control output.
- * Support zone monitor, equipment status real-time indication.
- * Support event trigger phone call notification, can be set re-calling times when no answering.
- * Integrated 4 independent players (supports MP3 and WMA audio formats).
- * Support lines redundant wiring.
- * Support Ethernet online configuration, control interface work offline.
- * Support up to 4 remote microphones at max distance 600 meters, and support a microphone circuit redundancy wiring.
- * Support linkage to bus fire controller (fanhai Sanjiang 9100 and 9000 series of fire linkage controller).

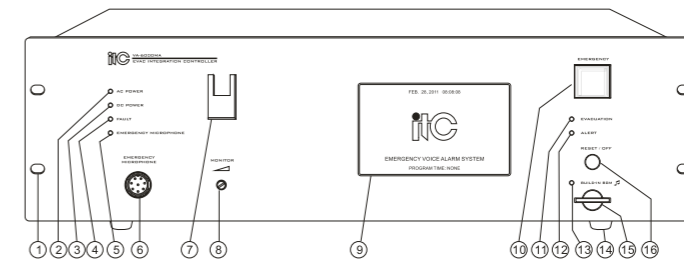
Basic Functions

- * Integrated 1 independent background music player, support timing, fixed, curved, specify playback modes, support MP3 and WMA audio formats.
- * Integrated 1 independent voice message player, support voice message and language revision as demand.
- * Integrated 2 independent EVAC voice message players; support programmable stage evacuation alarm mode and specified partition evacuation alarm mode, evacuation alarm and warning information can be played at the same time.
- * Integrated 1 channel analog telephone interface for remote telephone paging broadcast.
- * With 4 line inputs (one is optional for line or ordinary microphone), 1 audio output, which can be connected to external recorder, for emergency paging recording.
- * With 4 remote MIC interfaces, connected to VA-6000RM remote microphone by standard RJ-45 and CAT-5 cable, adapting long distance parallel transmission mode for language transmission, up to 600 meters.
- * With 8 level signal or 0 voltage short circuit input (or voltage from the programming decision, default 0 voltage), (can be regarded as 8 shortcut control keys), each shortcut key functions can be user-defined, such as: play language message to specified zones or open external power supply to trigger a third party equipment to achieve the event triggering alarm.
- * Real time diagnosis, handling, records 2000, support sound, light alarm and prompt maintenance, troubleshooting when abnormal.
- * Support basic Window platform visual operation interface, status automatic synchronization, classification rights management to ensure the security system.
- * System support the third party online 0 voltage relay input and output interface.

Specifications

Model	VA-6000MA
Electrical Specifications	
AC Power Supply	
Voltage	~220V 50Hz
Maximum Current	Less than 0.2A
Fuse Specification	250V/2A, slow type
Power	36W
DC Power Supply	
Voltage	24V DC, ±20%
Maximum Current	1.5 A
Performance Index	
Emergency Microphone	
Sensitivity	5mV
Impedance	600Ω
Line input	
Distortion	<1%(rated output power),1KHz
Frequency	80Hz~20KHz
Sensitivity	350mV
Impedance	10KΩ
S/N Ratio	>70dB
Record Output	
Distortion	<1% (rated output power),1KHz
Frequency	200mV
Sensitivity	>70dB
Contact Output	
Fault Relay Output	Short circuit, no voltage
Fire linkage Relay Output	Short circuit, no voltage
8 Relay Programmable Output	Short circuit, no voltage
Programmable DC24V Power Outputs	+DC 24V, 1A
8 Programmable Trigger Input	
Level Model	highest 3.3V
Short Circuit Mode	Short circuit, no voltage
Short Circuit Input	
Fire Reset Input Contact	Pulse≥0.5S, no voltage
Voice Message	
Data Format	MP3 or WMA format
Storage Type	SD
Information Capacity	65535 (MAX programme of 255 songs)
Storage Time	>10 years
Log Information	
Data Format	HEX
Storage Type	Nand Flash
Information Capacity	2000
Storage Time	>10 years
Mechanical Index	
Size (L x W x D)	484 x 132 x 449 mm (19 inches wide, 3U)
Weight	About 8.0 Kg
Installation	Desktop or 19 inch cabinet
Color	Black
Environmental Requirements	
Operating Temperature	+5°C ~ +40°C
Storage Temperature	-20°C ~ +70°C
Relative Temperature	<95%

Front Panel

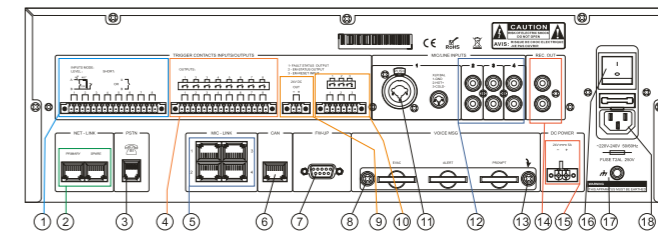


Connectors

- ① Mounting positioning holes (19 inch cabinet).
 - ② The host AC power supply indicator:
 - (1) Green - normal.
 - (2) Yellow - with fault.
 - ③ The host DC24V standby power indicator:
 - (1) Green - normal.
 - (2) Out - without configured.
 - (3) Yellow - with fault.
 - ④ System status indicator:
 - (1) Yellow - with fault, long flicking means the user performs a manual reset, lasting about 1 minute, if the fault is failed to remove, it will continue flick; when the system fault is removed, the led indicator automatically extinguished.
 - (2) Out - each module is running normally or the system doesn't open module detection;
 - ⑤⑥⑦ Panel emergency PTT (push to talk) microphone.
 - "⑤" Color status description:
 - (1) Out - PTT in normal.
 - (2) Green - PTT is broadcasting.
 - (3) Yellow - with fault.
 - "⑥" Aviation socket, used to connect the PTT microphone.
 - "⑦" PTT microphone hanger.
- If the user presses PTT switches, the host will do the following adjustment, function reference implementation are as follows:
- (1) if select any zone, then it is zoning broadcasting.
 - (2) Without selecting zone, then it is all zone broadcasting.
 - (3) If the system is working in emergency mode, and without selecting any zone, then it broadcasts to the current triggered zones.
- Note: When PTT microphone's switch is released more than 5 seconds in the process of broadcasting, the system will automatically cut off the broadcast.
- ⑧ The host interface (5 inch TFT with touch LCD, please refer to the user manual

- operation).
 - ⑨ Partition monitor speaker volume control knob: used to adjust the volume to monitor the current partition audio output after open the monitor.
 - ⑩ System work mode switch:
 - (1) Red rapid flashing - the system is currently in reset mode, prohibiting all manual operation
 - (2) Red slow flashing - the system is currently in emergency mode (press about 3 seconds to manually or automatically triggered enter into EMC mode, in this mode, it allows to play EVAC audio, which is not allowed to play in normal mode).
 - (3) Out - working in normal mode.
- Note: 1, when it is flashing press about 3~4 seconds to exit from emergency mode. 2, when the indicator light is off, press about 3~4 seconds to enter emergency mode.
- ⑪⑫⑬ Evacuation /Alert voice message / BGM work state indicator:
 - (1) Off - normal.
 - (2) Yellow - with fault.
 - ⑭ The host text.
 - ⑮ Background music storage (SD) card, used to store the background music, in MP3 and WMA format (note the memory card song quantity is within 255).
 - ⑯ Multi-functional multiplexing keys (RESET/OFF).
 - (1) The user press the zones to close the currently selected zones output.
 - (2) when the PTT microphone is broadcasting, press this button to quickly switch off the broadcasting.
 - (3) When system is with faulty, press this button to temporarily turn off the buzzer output (can keep only 1 minute, if you want to turn off the buzzer output completely, need eliminate the fault and all prohibition detection function for the corresponding faulty module).
 - (4) Press this button to enter the log interface when the system is not in the log interface.
- Note: order of execution - PTT broadcast - select zones - system faults -- back to the main interface.

Back Panel

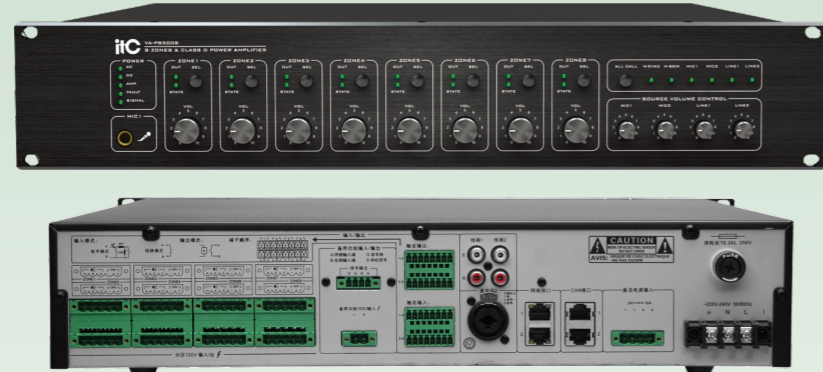


Connectors

- ① 8 programmable trigger signal inputs(can be level or short-circuit signal, up to the configuration).
- ② System network interface.
- ③ Telephone interface.
- ④ 8 programmable relay output interfaces.
- ⑤ 4 remote MIC interfaces (note MIC address should be corresponding with the series number).
- ⑥ CAN bus interface, to connect VA-6000BC or DC24V UPS power supply.
- ⑦ System firmware upgrade interface.
- ⑧⑩ Voice SD card plate and fastening screws.
- ⑨ DC24V power output (can be programmable, manual or automatic control output).
- ⑩ From left to right: 1, system fault status output interface - when any module is with fault, it will be short circuit output, otherwise disconnected; 2, system operation status

- output - when the system is in emergency mode, it will be short circuit output, otherwise disconnected; 3, emergency reset input interface - when the system is in emergency mode, input a low-level signal (bigger than 0.5S) to make the system reset to normal mode.
- ⑪ Microphone / line input 1, - connects to external MIC/CD/TUNE audio signal.
- ⑫ AUX2/AUX3/AUX4 line input - connects to external standard audio signal such as CD player, radio and so on.
- ⑬ Unbalanced microphone output signal, that is recording audio signal output.
- ⑭ the host DC24V DC power input socket, to connect external VA-6000BC
- ⑮ the main power switch.
- ⑯ the host shell grounding (Note: please ensure the reliable grounding).
- ⑰ AC power input socket (with fuse and the power switch, confirm the voltage range before power on).

Changeover Built in 8-zone Amplifier
VA-P8500S
 Embedded software: EVAC system PC software V3.0



Descriptions

VA-P8500S, 2U cabinet design, it is built-in a 500W digital amplifier and integrated to be 8 zones, can be installed in the broadcasting room or remote control room, share the network audio source with the system via Ethernet, support 4 channel local signal inputs (The priority of audio output can be set by software VA-6000ST). It's the ideal choice for small or medium system.

Features

- * Support the speaker loop grounding, open circuit and short circuit detection.
- * Support the speaker loop 3 / 4 wired cabling
- * 8 Programmable trigger input interfaces.
- * 8 Programmable trigger output interfaces.
- * Support power amplifier enter power saving mode to save energy when no signal input.
- * Support the line redundant cabling.
- * Support linkage with fire alarm control unit to realize fire alarm linkage control.

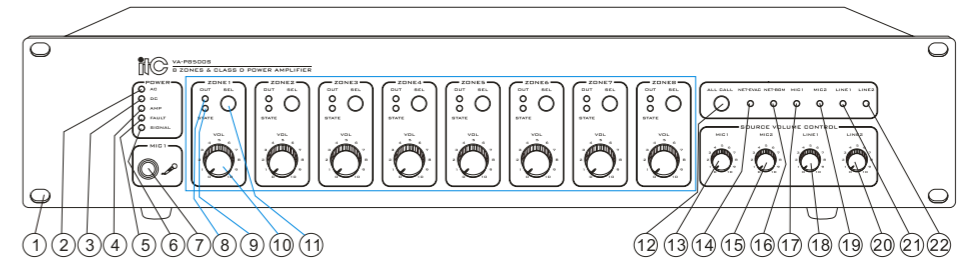
Function

- * Built-in 500W digital amplifier and 8 power zone outputs, each zone has independent LED indicator, output control button and volume control.
- * With Network input, EVAC input, BGM input, local emergency mic input, mic input and 2 line inputs; user can set the priority of audio output through the VA-6000ST.
- * Can work with an external backup amplifier, when the built-in amplifier faulted, it automatically switch to backup amplifier.
- * Automatic real-time monitor the operation of each zone speaker loop (Ground connection, open circuit, short circuit).
- * With 8 channels 'dry contact' input interfaces, can trigger pre-program edited voice messages to the designated zone or open the corresponding external power supply to achieve the corresponding event warning.
- * With 8 channel programmable relay signal output interfaces, can output short circuit 0 voltage control signal to the third party device to realize online automatic control.
- * Support 24V DC input interface (external connect with the 24V DC supplied by VA-6000BC)

Specifications

Model	VA-P8500S
AC power	~220V 50Hz
Maximum current	3A (Exclude the 4 wired override output)
Fuse Size	250V/6..3A, slow type
DC power	
Voltage	24V DC, ±20%
Maximum current	27A (Exclude the 4 wired override output)
Power consumption	650W
Performance Index	
Line input	
Distortion	<1% (Rated output power), 1KHz
Frequency	80Hz~20KHz
Sensitivity	775mV
Impedance	10kΩ
S/N Ratio	>70dB
Emergency Mic	
Sensitivity	5mV
Impedance	600Ω
Contact Output	
8 channels programmable relay output	Short Circuit, No voltage
8 channels programmable trigger input	8 channels programmable trigger input
Level mode	Max 3.3V
Short circuit mode	No voltage, short circuit.
Cooling mode	Air-Cooled
Protection mode	Delay/Overheat/Short Circuit/Over Load
Machine Index	
Dimension	484×88×447 mm (19' width, 2U)
N.W.	About 11.5kg
Installation	Desktop or 19 inch cabinet
Color	Black
Environment Requirements	
Operation Temperature	+5°C ~ +40°C
Storage Temperature	-20°C ~ +70°C
Relative Temperature	<95% (No condensation)

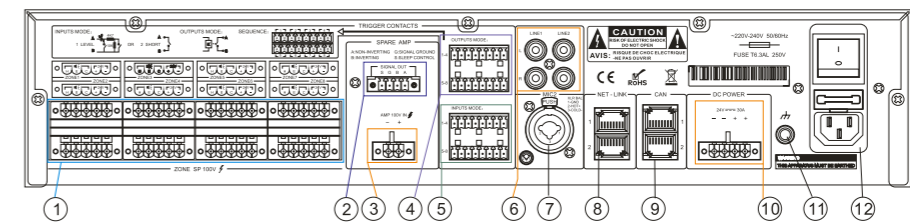
Front Panel



Connectors

- ① 19 inch rack location hole;
- ② Partition amplifier main power indicator:
 - (1) Off - stop working.
 - (2) Green - normal.
 - (3) Yellow - with fault.
- ③ Partition amplifier 24V DC indicator:
 - (1) Off-without configuration.
 - (2) Green - normal.
 - (3) Yellow - with fault.
- ④ Partition amplifier status indicator (If there is no spare amplifier externally, it is only the main amplifier status indicator):
 - (1) Off- Both main amplifier and spare amplifier are operating normally.
 - (2) Light yellow - Main amplifier or spare amplifier with fault.
- ⑤ Partition amplifier overall working status indicator:
 - (1) Light green - Partition amplifier works normally.
 - (2) Light yellow - Partition amplifier fails.
- ⑥ The output signal indicator of current partition to indicate the output audio status of the current partition.
 - (1) Off - The current partition audio is non-network EVAC voice.
 - (2) Green - The current partition audio is network EVAC voice.
 - (3) Red - The current partition, and the partition output EVAC voice and remote broadcast paging with fault, only for background music.
- ⑦ Panel emergency MIC jack.
- ⑧ Partition output status indicator:
 - (1) Off - The current partition closed.
 - (2) Green- The current partition works normally, and the output is ordinary audio.
 - (3) Red - The current partition, and the partition output EVAC voice and remote broadcast paging with fault, only for background music.
- ⑨ Partition status LED tri-color indicators:
 - (1) Off-The current partition works normally.
 - (2) Yellow - with fault (including open, short circuit and ground).
- ⑩ Partition volume control knob (but partition output EVAC voice and remote broadcast paging volume control will fail, only for background music).
- ⑪ Partition selection button.
- ⑫ Partition output select all button.
- ⑬ MIC1 output audio adjustment.
- ⑭ Network evacuation voice instructions:
 - (1) Off - The current partition audio is non-network EVAC voice.
 - (2) Green - The current partition audio is network EVAC voice.
- ⑮ Rear MIC2 volume control knob.
- ⑯ Network BGM instructions:
 - (1) Off - The current partition audio is non-network BGM music.
 - (2) Green -The current partition audio is network BGM music.
- ⑰ MIC1 working indicator:
 - (1) Off - The current partition audio is not from MIC1.
 - (2) Green - The current partition audio is from MIC1.
- ⑱ Line Input 1 volume control knob.
- ⑲ MIC2 working indicator:
 - (1) Off - The current partition audio is not from MIC2.
 - (2) Green - The current partition audio is from MIC2.
- ⑳ line input 2 volume control knob.
- ㉑ Line Input 1 working indicator:
 - (1) Off - The current partition audio is not line input 1.
 - (2) Green - The current partition audio is line input 1.
- ㉒ Line Input 2 working indicator:
 - (1) Off - The current partition audio is not line input 2.
 - (2) Green - The current partition audio is line input 2.

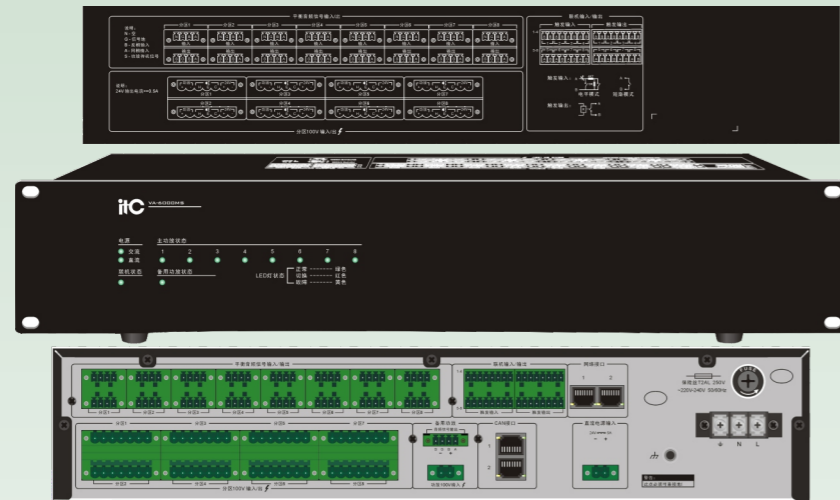
Back Panel



Connectors

- ① 8 channel 100V audio signal output ,to connect with 3/4 wired volume control or speaker.
- ② Backup amplifier balance audio signal and standby signal output, to connect backup amplifier.
- ③ Backup amplifier 100V audio signal input(connect to external backup amplifier 100V output).
- ④ 8 channels programmable relay trigger output signal.
- ⑤ 8 channels programmable relay trigger input signal (level signal or short-circuit signal depending on the configuration).
- ⑥ 2 channel line input interface, to connect CD/MP3/TUNER standard audio signal.
- ⑦ Mic/line input, to connect MIC/CD/MP3/TUNER standard audio signal(when input 6.3 plug unbalance audio signal,it will be mic input, when input XLR balance audio signal, it will be line input.)
- ⑧ Device network interfaces.
- ⑨ CAN bus interface for charger (VA-6000BC).
- ⑩ Standby power supply input interface (connecting this interface with VA-6000BC power output interface).
- ⑪ Chassis grounding (Note: Please ensure reliable ground at this point).
- ⑫ Power supply switch and main power supply input socket with fuse.

**8 Channel Changeover
VA-6000MS
Embedded Software: Fire alarm system software V3.21**



Descriptions

VA-6000MS changeover is an integrated controller supporting main and backup amplifier switching, speaker circuit grounding detection, open circuit and short circuit detection; compatible with 3/4 wired volume controller wiring, no need extra wiring or power supply; combining 8 programmable dry contact or wet contact trigger inputs and 8 programmable on-line output signal. It works with class D amplifiers, traditional amplifiers to provide a safe, affordable solution to the PA & Voice Alarm system.

Features

- * 2U cabinet design, high integrated, and modularized design.
- * Support speaker circuit grounding, open circuit and short circuit detection.
- * Support 3/4 wired speaker loop wiring.
- * 8 programmable trigger input interfaces.
- * 8 programmable trigger output interfaces.
- * Support power-saving mode when there is no input signal.
- * Support line redundant wiring.
- * Support linkage to fire alarm controller.

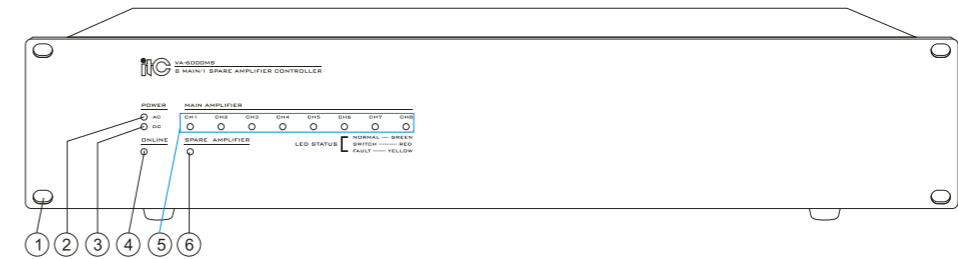
Basic Functions

- * Main amplifier automatically switch to backup amplifier, real-time detection, LED indicators in different color.
- * Real time monitoring to speaker bus loop, power amplifier status, automatic control switch.
- * Amplifier enters into power saving mode when no signal input to save energy (start through VA-6000ST, default disabled).
- * Support to configure the priority of network and local audio.
- * Support power off broadcasting, even if the main and standby power supply is cut off at the same time (amplifier power supply normal), the local 8 audio signals are not affected.
- * 8 dry contact or wet contact inputs, to trigger the pre-programmed voice message to the specified zones or trigger the correspondent external power to reach the corresponding event warning.
- * 8 programmable relay signal output port, connect the 0 voltage short circuit relay control signal to the third party equipment to realize on-line automatic control.
- * Provide DC 24V standby power input interface (connect to 24V DC supplied by VA-6000BC).

Specifications

Model	VA-6000MS
AC Power Supply	
Voltage	~220V 50Hz
Maximum Current	0.3A (not including the 4 wired relay output)
Specification Of The Fuse	250V/2A, slow speed type
DC Power Supply	
Voltage	24V DC, ±20%
Maximum Current	2A (not including the 4 wire relay output)
Power	48W
Performance Index	
Parallel Signal Input / Output	
Distortion	<1% (rated output power), 1KHz
Frequency	80Hz~20KHz
Sensitivity	385mV
Impedance	10KΩ
S/N Ratio	>70dB
Contact Output	
8 Relay Programmable Output	Short circuit, no voltage
8 Programmable Trigger Input	8 programmable trigger input
Level Model	Highest 3.3V
Short Circuit Mode	No voltage, short circuit
Cooling Way	Air cooled
Protection	Delay / over-temperature / short circuit / overload
Mechanical Index	
Dimension (L x W x D)	484 x 88 x 447 mm (19 inches wide, 2U)
Weight	About 7.8 Kg
Installation	Desktop or 19 inch cabinet
Color	Black
Environmental Requirements	+5°C ~ +40°C
Storage Temperature	-20°C ~ +70°C
Relative Temperature	<95% (no condensation)

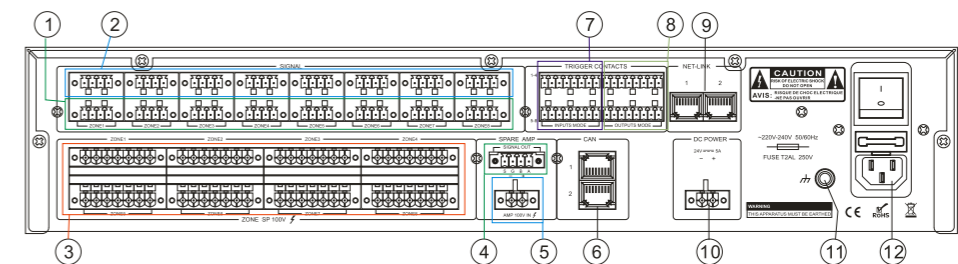
Front Panel



Connectors

- 19 inch rack location hole and machine foot.
- Main power indicators:
 - Off - stop working.
 - Green - normal.
 - Yellow - with fault.
- DC24V power indicator:
 - Off - not configured.
 - Yellow - standby power supply with fault.
 - Green - standby power supply in normal.
- Network status indicator:
 - Yellow - disconnect.
 - Green - normal.
- The main amplifier 1~8 channel state indicator:
 - Green - normal.
 - Yellow - with fault.
 - Red - the main amplifier fault, the duty of the current faulty main power amplifier has switched to the standby power amplifier.
- 6 standby power amplifier work state description:
 - Green - normal.
 - Yellow - with fault.
 - Red - the main amplifier fault, the duty of the current faulty main power amplifier has switched to the standby power amplifier.

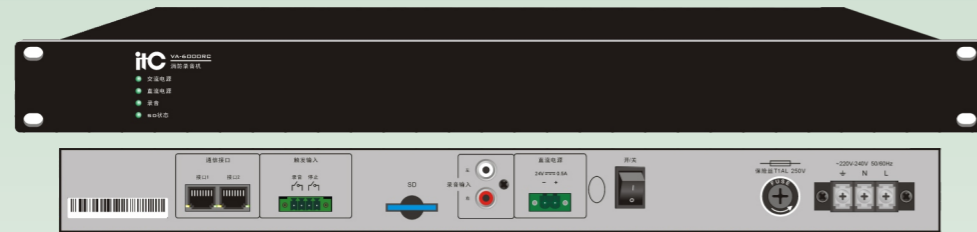
Back Panel



Connectors

- 8 balanced audio signal and amplifier standby signal output interface, to connect with signal input of master amplifier.
- 8 local balanced audio signal input interface, to connect with audio source equipment.
- 1-8 partition audio power signal output, connect with speaker or 3 wired, 4 wired volume controller.
- Standby amplifier balanced audio signal and standby signal output, to connect with standby amplifier.
- Standby power amplifier 100V audio signal output.
- CAN bus interface, to connect with external VA-6000BC or DC 24V UPS power supply.
- 8 programmable trigger signal input (can be level signal or short-circuit signal, according to the parameter configuration of machine).
- 8 programmable relay output signal.
- Changeover network interface.
- Changeover backup power supply input interface connecting to external VA-6000BC DC power supply output.
- Chassis grounding (Note: please ensure the reliable grounding).
- Power supply switch.

**Voice Recorder
VA-6000RC**



Descriptions

VA - 6000 RC is used to work with main control system to record paging content of PTT Mic, which provides a scientific basis for the subsequent accident responsibility, and provides two control methods of CAN bus protocol and relay contact; Audio files are stored in SD card and the max memory space is 32G.

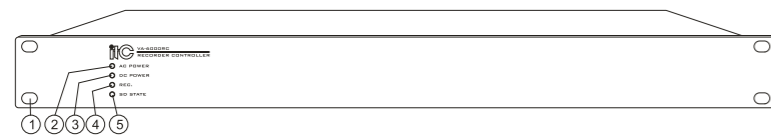
Features

- * Support long time, loop recording, automatically overwriting the oldest audio file when there is no storage space.
- * Support two control methods of CAN bus protocol and relay contact;.
- * Support external storage .
- * SD card connection state detection.
- * The recording files can be played by ordinary player and no need professional players.

Basic Functions

- * One recording audio input; to receive audio recording from VA-6000MA and store into the SD card; it can record cyclically for a long time and cover the old recording file automatically.
- * VA-6000MA controls the recorder to start or end the record by CAN bus control or the external short circuit or 0 voltage signal.
- * Backup DC24V power input; to connect to external DC 24V power provide by VA-6000BC.

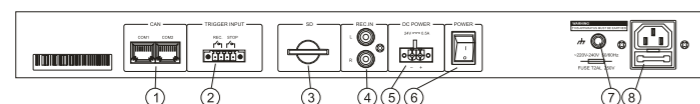
Front Panel



Connectors

- ① 9 inch rack position hole.
- ② Main power indicator.
(1) Green - Normal.
(2) Yellow - with fault.
- ③ Standby DC 24V power indicator.
(1) Green - normal.
(2) Yellow - cannot detect standby power.
- ④ Device recording state indicator.
(1) Green - in the recording mode.
(2) Yellow - out of recording mode.
- ⑤ SD cards connection state indicator.
(1) Green - well connected.
(2) Yellow - disconnected.

Back Panel



Connectors

- ① Equipment connector.
- ② Relay contact control interface ($\geq 0.5S$).
- ③ SD cards slot.
- ④ Record audio input.
- ⑤ Standby 24V power input connector.
- ⑥ Power switch.
- ⑦ AC220V power output.
- ⑧ Device grounding terminal (Attention: Be sure of this).

Specifications

Model	VA-6000RC
AC Power	
Voltage	~220V 50Hz
Max Current	<0.1 A
Fuse Spec	250V/0.5A, slow type
DC Power	
Voltage	24V DC, $\pm 20\%$
Max Current	<0.2A
Power Consumption	5W
Performance Index	
Unbalance Input	
Distortion	<1% (RMS), 1KHz
Frequency	20Hz~20KHz
Sensitivity	385mV
Impedance	10K Ω
S/N Ratio	>70dB
Contact input	Short circuit, no voltage
Cooling Method	/
Protection Method	Overcurrent
Mechanical Index	
Dimension (L x W x D)	484 x 44 x 447mm (1U)
Gross weight	About 6.5Kg
Net weight	About 4.9Kg
Installation	Desktop or 19 inch rack
Color	Black
Environmental Requirement	
Operation Temp	+5°C ~ +40°C
Storage Temperature	-20°C ~ +70°C
Relative Temperature	<95% (no condensation)

**Digital Amplifier
VA-P120/VA-P240/VA-P350/VA-P500**



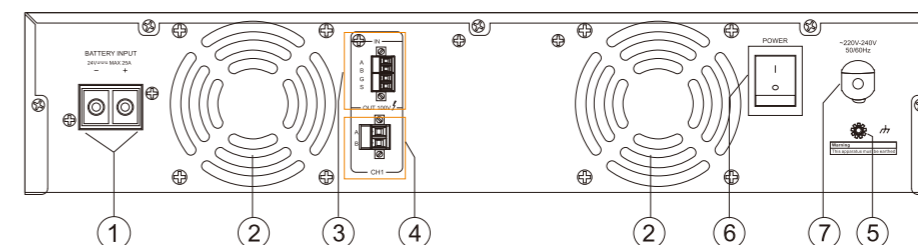
Descriptions

It is a Class-D digital amplifier which is used for the voice signal broadcasting in EVAC system. And it is a 2U device that integrates 4 independent PFC functions, a power-saving control module, and the 120W/240W/350W/500W power amplifier with DC24V power interface, one channel.

Features

- * Modular design, easy to configure as required.
- * The use of efficient class D digital power amplifier design scheme has lower power consumption.
- * 2U design, 1 channel, 120W/240W/350W/500W.
- * Overload, short circuit protection, automatic temperature control.
- * Automatically detect the working status of each channel and indicate by LED.
- * Support power saving mode, enter standby mode when there is no signal.

Back Panel



Connectors

- ① DC24V Input
- ② Fan exhaust air hole
- ③ CH1-4 Balanced line input
- ④ CH1-4 100V speaker line outputs
- ⑤ Earth line
- ⑥ Power switch
- ⑦ Power cord
- ⑧ Device grounding terminal

Specifications

Model	VA-P120	VA-P240	VA-P350	VA-P500
AC power				
Voltage	~220V 50Hz			
Operating current	0.7A	1.4A	2A	2.8A
DC power				
DC Power Input	DC~24V; $\pm 20\%$			
Operating current	6.5A	12.3A	18A	25A
Power	120W	240W	350W	500W
Power consumption	150W	295W	425W	605W
Audio parameter				
Input method	balance 385mV			
Frequency Response	40Hz-20KHz $\pm 3dB$			
Output	100V Constant Voltage			
THD	$\leq 1\%$ (Rated power distortion) 1KHz			
SNR	$\geq 90dB$			
Operating Temperature	5°C ~ 40°C			
Relative Humidity	<95%			
Cooling way	Fan Cooling Type			
Protection mode	Delay, over heat, short circuit, overload protection			
Dimension	484 x 478 x 88mm			
Net weight	8.1Kg	8.1Kg	8.1Kg	8.06Kg

Digital Amplifier
VA-P2120/VA-P2240/VA-P2350/VA-P2500



Descriptions

It is a Class-D digital amplifier which is used for the voice signal broadcasting in EVAC system. And it is a 2U device that integrates 4 independent PFC functions, a power-saving control module, and the 120W/240W/350W/500W power amplifier with DC24V power interface, 2 channels.

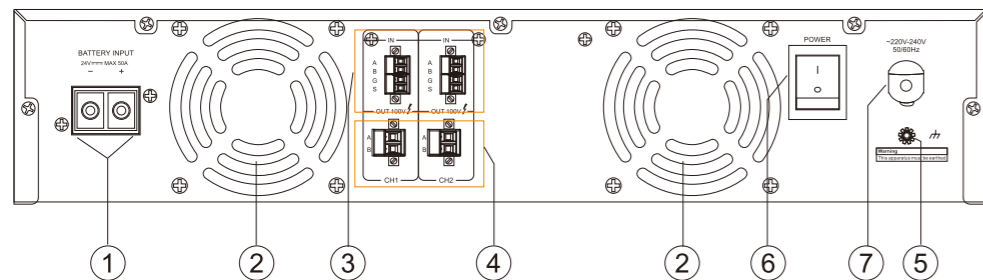
Features

- * Modular design, easy to configure as required.
- * The use of efficient class-D digital power amplifier design scheme has lower power consumption.
- * 2U design, 2 independent channels, each channel 120W/240W/350W/500W.
- * Overload, short circuit protection, automatic temperature control.
- * Automatically detect the working status of each channel and indicate by LED.
- * Support power saving mode, enter standby mode when there is no signal.

Specifications

Model	VA-P2120	VA-P2240	VA-P2350	VA-P2500
AC power supply				
Voltage	~ 220V 50Hz			
Working current	1.4A	2.6A	4A	5.5A
DC power supply				
DC input	DC~24V; ±20%			
Working current	12.3A	24A	35A	50A
Power	2x120W	2x240W	2x350W	2x500W
Power Consumption	295W	580W	845W	1200W
Audio Parameter				
Input mode	Balance 385mV			
Frequency Response	40Hz-20KHz±3dB			
Output	100V Constant Voltage			
THD	≤1% (Rated Power THD), 1KHz			
SNR	≥90dB			
Working Temperature	5°C ~ 40°C			
Relative Humidity	< 95%			
Cooling Mode	Air-Cooled			
Protection	Delay, Short Circuit, Overload, Over-temperature			
Dimensions	484 x 478 x 88mm (Machine feet not included)			
Net weight	9.8Kg	10.6Kg	10.26Kg	10.49Kg

Back Panel



Connectors

- 1 DC24V Input
- 2 Fan exhaust air hole
- 3 CH1-4 Balanced line input
- 4 CH1-4 100V speaker line outputs
- 5 Earth line
- 6 Power switch
- 7 Power cord

Digital Amplifier
VA-P4120/VA-P4240/VA-P4350/VA-P4500



Descriptions

It is a Class-D digital amplifier which is used for the voice signal broadcasting in EVAC system. And it is a 2U device that integrates 4 independent PFC functions, a power-saving control module, and the 120W/240W/350W/500W power amplifier with DC24V power interface, 4 channels.

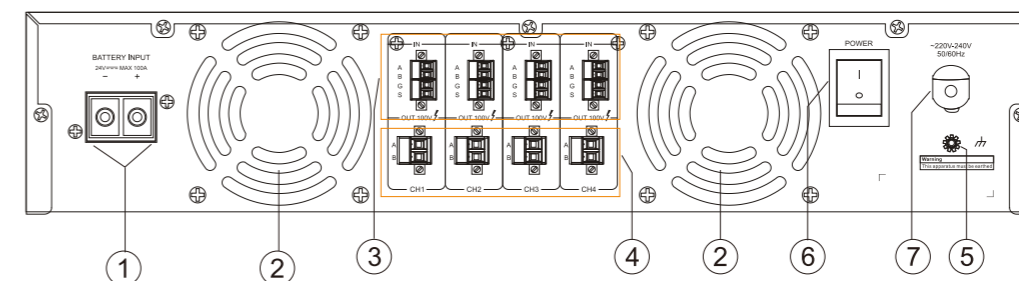
Features

- * Modular design, easy to configure as required.
- * The use of efficient class-D digital power amplifier design scheme has lower power consumption.
- * 2U design, 4 independent channels, each channel 120W/240W/350W/500W.
- * Overload, short circuit protection, automatic temperature control.
- * Automatically detect the working status of each channel and indicate by LED.
- * Support power saving mode, enter standby mode when there is no signal.

Specifications

Model	VA-P4120	VA-P4240	VA-P4350	VA-P4500
AC power supply				
Voltage	~220-240V 50/60Hz			
Working current	2.6A	5.3A	7.7A	11A
DC power supply				
DC input	DC~24V; ±20%			
Working current	24A	48A	70A	100A
Power supply	4x120W	4x240W	4x350W	4x500W
Power consumption	580W	1150W	1680W	2400W
Audio frequency data				
Input mode	Balance 385mV			
Frequency response	40Hz-20KHz±3dB			
output	Constant voltage 100V			
THD	≤1% (rated power THD), 1KHz			
S/N	≥90dB			
Working temperature	5°C ~ 40°C			
Related humidity	<95%			
Cooling way	Air-cooled			
Protection ways	Time-delay, over-heated, short circuit, overload			
Size	484 x 478 x 88mm			
Net Weight	13.46Kg	13.48Kg	13.54Kg	13.66Kg

Back Panel



Connectors

- 1 DC24V Input
- 2 Fan exhaust air hole
- 3 CH1-4 Balanced line input
- 4 CH1-4 100V speaker line outputs
- 5 Earth line
- 6 Power switch
- 7 Power cord

**DC Power Supply and Battery Charger
VA-6000BC**



Application

VA-6000BC is mainly used in VA-6000 system to provide stable and reliable spare DC power when there is no AC power supply.

Features

- * Select charging mode automatically.
- * Storage battery failure, overvoltage, over-temperature and overtime charging detection.
- * Automatic temperature control fan and overheating protection.
- * Storage battery can be changed, will not be influenced by the change of AC power supply.

Basic Functions

- * Built-in battery charge management and monitoring circuit. When AC power, battery voltage and temperature are normal, storage battery will be charged. And it will enter maintenance condition automatically when fully charged.
- * Storage battery adopts two DC 24V lead-acid batteries in series or one DC 24V lead-acid battery.
- * Select charging mode automatically, to ensure safety charging and service life: pre-charge→constant current→trickle charge.
- * High charging efficiency and restore efficiency. Storage battery fault detection, overvoltage detection, over-temperature detection and overtime charging detection.
- * Being suitable for multiple volume battery ≤200Ah.
- * Dual internet interfaces, it can realize hand in hand connection.

Specifications

Model	VA-6000BC
AC Power	
Power Supply	~ 2200V 50Hz
Maximum Current	1.5A
Fuse	250V/2A, low speed type
DC Power Output	
Power Supply	24V storage battery
Maximum Current	50A per channel
Charging	
Maximum charging current	10A, adjustable
Heat dissipation	Temperature fan, forced-style
Machinery Index	
Size(L x W x D)	484 x 88 x 447mm (2U)
Net weight	About 7.5kg
Mounting	Desktop or 19 inch cabinet
Color	Black
Environment Requirement	
Operating Temperature	+5°C ~ +40°C
Storage Temperature	-20°C~ +70°C
Relative Temperature	<95%, (No condensation)

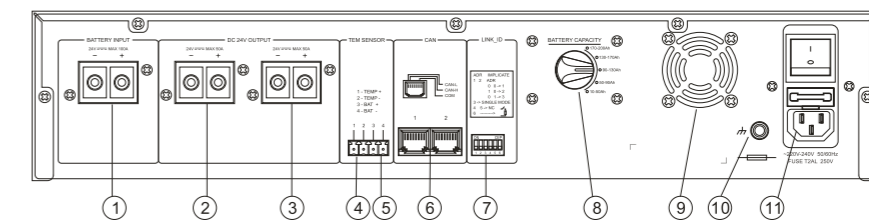
Front Panel



Connectors

- ① Location hole.
- ② AC power indicator light:
 - (1) Off – AC power is not connected.
 - (2) Green - AC power supply is normal.
- ③ Storage battery connection status indicator light:
 - (1) Off - Storage battery connection normal.
 - (2) Yellow - Storage battery connection off or battery failure.
- ④ Charging status indicator light:
 - (1) Off - Storage battery is fully charged.
 - (2) Yellow - Charger is charging the storage battery.
- ⑤ Battery output over voltage indicator light:
 - (1) Off - Voltage normal.
 - (2) Yellow - Over voltage, charging will be stopped automatically to protect the storage battery.(When storage battery voltage is over 30V, charger will stop charge, V-light will be on)
- ⑥ Storage battery output low voltage indicator light:
 - (1) Off - Voltage normal:
 - (2) Yellow - Low voltage. This case happens when the first time using no power storage battery or using failure storage battery, user need to change a new storage battery when it's failure storage battery. (When storage battery voltage is below 14V, V-light will be on, charger will remind storage battery is low voltage, at this time, charger will use small current to activate the battery until it become normal)
- ⑦ General working status indicator light of charger:
 - (1) Off - Charger working normal.
 - (2) Yellow - Charger failure, other failure state will happen at the same time, such as, storage battery is not connected, temperature sensor is not connected and etc.

Back Panel



Connectors

- ① Storage battery connector, please pay attention to positive pole and negative pole.
- ② ③ DC24V output connector, please pay attention to positive pole and negative pole.
- ④ Temperature sensor input interface.
- ⑤ Storage battery voltage test input interface. please pay attention to it need to be correctly connected to the output end of storage battery, otherwise bad connection shall lead to being unable to charge, please pay attention to positive pole and negative pole.
- ⑥ Connection interface, connect to external controller, amplifier switcher, or zone amplifier CAN interface.
- ⑦ Communication address. "1, 2" is communication address bit, the largest address is 3, if there is only one device, "1, 2" shall both be put at bottom position; "3" means device working mode setting, please make it at bottom position when charger is used in VA-6000 system, please make it at top position when charger is not used in VA-6000 system, otherwise the charger cannot work normally; "4, 5" are for reservation, no function; "6" is terminal matched resistance, mainly used in abnormal communication case when many chargers working by hand in hand connection, and the "6" address bit of the last charger should be on, please note only the last charger, not all.
- ⑧ Current accumulator capacity tap selection switch, please select according to the current accumulator capacity.
- ⑨ Fan, when the temperature in the machine reaches some level, the fan will work automatically to lower the inner temperature of the machine.(When the cooling fan temperature inside machine reaches 35-45°C, fan will start working, the higher temperature the higher fan rotation speed.)
- ⑩ Ground point. Please note the reliable ground connection.
- ⑪ Power switch and input socket of main power with fuse.

Fireman Microphone
VA-6000FM
 Embedded software: microphone call control embedded software V1.32



Descriptions

VA-6000FM is used for paging control in the VA-6000 system, to allow users remote control the system's voice message and make paging call. It supports eight zones/groups selection. It can add zone/group by adding extension unit VA-6000EM which also can support eight zones. Seven extension units can be added at most in a system to expand to 64 zones.

Features

- * One-key zone/group selection, easy to understand and operate.
- * Parallel transmission can realize long distance transmission through CAT-5 cable.
- * Easy to see the system fault and system module status display.
- * Support zone/ group selection extension.
- * Support line audio input and the volume is adjustable.
- * Support redundancy wiring.
- * Support 24V phantom power supply.

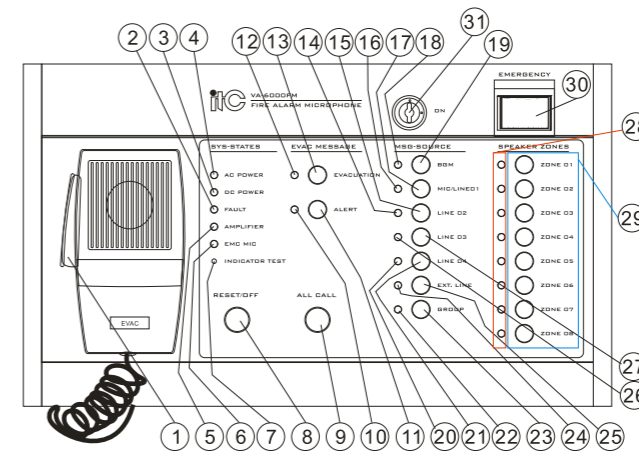
Basic Functions

- * MIC output level is adjustable.
- * Priority of paging can be set through VA-6000ST software.
- * Built-in HI-FI monitor speaker, support monitor output.
- * One-key to fast enter into emergency broadcast status.
- * With external headset jack, to monitor or recording the paging voice.

Specifications

Model	VA-6000FM
DC Supply	
Power Supply	24V DC, ±20%
Maximum Current	0.1 A (including extension unit)
Power Consumption	2.4W (including extension unit)
Performance Index	
Parallel Signal Output	
THD	<1% (rated output power), 1KHz
Frequency Response	80Hz~16KHz
Sensitivity	500mV
Impedance	10KΩ
S/N Ratio	>70dB
Line In	
THD	<1% (rated output power), 1KHz
Frequency Response	80Hz~16KHz
Sensitivity	350mV
Impedance	10KΩ
S/N Ratio	>70dB
Microphone	
Sensitivity	5mV
Impedance	600Ω
Mechanical Index	
Size (L x W x D)	256 x 52 x 149mm
Weight	1.5Kg
Mounting	Desktop or 19 inch cabinet
Color	Black
Environment	
Operation Temperature	+5°C ~ +40°C
Storage Temperature	-20°C~ +70°C
Relative Temperature	<95% (no condensation)

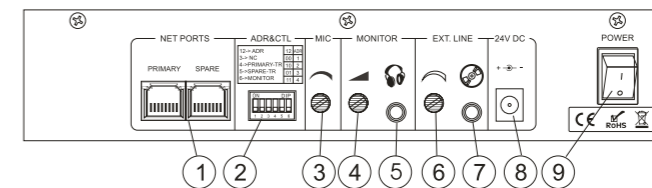
Front Panel



Connectors

- ① Handheld PTT (push to talk) microphone.
- ② System status indicator light (Notice: not the indicator for current status of microphone).
 (1) Light off - All devices and modules with normal power supply.
 (2) Yellow - one or more devices or all devices and modules with abnormal power supply.
- ③ DC power supply status indicator light of all the devices (If no configuration, system will ignore the working status and default status is normal.)
 (1) Off - All devices DC power supply fault.
 (2) Yellow - All devices or some devices DC power supply abnormal (If no configuration, please ignore).
- ④ Power status indicator light of all devices:
 (1) Off - All the devices or modules power supply normal.
 (2) Yellow - Some or part of all of devices and modules power supply fault.
- ⑤ Working status indicator light of the amplifier:
 (1) Off - All amplifier working normally including spare amplifier.
 (2) Yellow - Some or all amplifiers fault. (including spare amplifier).
- ⑥ Handheld PTT (push to talk) microphone work status indication.
 (1) Off - PTT microphone is working properly.
 (2) Yellow - PTT microphone failure.
- ⑦ Green flashing - Current microphone paging is switched to higher priority audio.
- ⑧ Indicator test button: After press the test button on rear panel, all indicator light color will change from green to red to yellow to normal.
- ⑨ Fault resetting/ zones switch off button.
- ⑩ All zones selection button.
- ⑪ Indicator light of Alarm voice status.
 (1) Off - Alarm voice player and memory card audio file normal.
 (2) Green - Alarm voice is playing.
 (3) Yellow - Alarm voice file missing or player fault.
- ⑫ Alarm voice control button
- ⑬ Evacuation voice working status indicator.
 (1) Off - Evacuation voice player and memory card audio file normal.
 (2) Green - Evacuation voice is playing.
 (3) Yellow - Evacuation voice or player fault.
- ⑭ Evacuation voice control button:
- ⑮ Line input 02 working status indicator light.
 (1) Off - line input 02 is not working.
 (2) Green - line input 02 is working.
- ⑯ Line input 02 control button.
- ⑰ Line input 01 working Status indicator light.
 (1) Off - line input 01 is not working.
 (2) Green - line input 01 is working.
- ⑱ Line input 01 control button.
- ⑲ BGM working status indicator light.
 (1) Off - BGM player and memory card audio file normal.
 (2) Green - BGM is playing.
 (3) Yellow - BGM or player fault.
- ⑳ BGM control button.
- ㉑ Line input 04 status indicator light.
 (1) Off - line input 04 is not working.
 (2) Green - line input 04 is working.
- ㉒ Line input 04 control button.
- ㉓ Zone and group control mode indicator light.
 (1) Off- Devices are controlled by zone control mode.
 (2) Green- Devices are controlled by Group control mode.
- ㉔ zone and group control mode selection button.
- ㉕ Microphone and line input audio selection indicator.
 (1) Off- Devices are in microphone input status.
 (2) Green- Devices are in extend line input Status.
- ㉖ Extended line input audio selection button, green means current output.
- ㉗ Line input 03 Status indicator light.
 (1) Off - line input 03 is not working.
 (2) Green - line input 03 is working.
- ㉘ Line input 03 control button.
- ㉙ Zone working status indicator.
 (1) Off - indicates that the current zone is in the normal state of no broadcast or no audio.
 (2) Green - indicates that the current zone is broadcasting, the output is normal audio.
 (3) Red - that the current zone is broadcasting, the output is EVAC voice or remote paging broadcast such as RM / FM / PSTN.
- ㉚ Yellow - indicates that the current zone has fault.
- ㉛ Zone selection button.
- ㉜ System working mode switch
 (1) Red Fast flashing - the system is currently working in the reset mode, and all manual operation are prohibited.
 (2) Red Slow flashing - The system is currently in emergency mode (you can press the button to enter or auto trigger automatically, in this mode EVAC voice are allowed to play, normal mode prohibit to play EVAC voice information).
 (3) Off - the system is currently working in normal mode.
 Note: 1) When the light is in the flashing state, press to exit the emergency mode.
 2) When the light is off, press to enter the emergency mode.
- ㉝ Electronic lock switch.

Back Panel



Connectors

- ① Main and spare network interface.
- ② Device address and function configuration ("1, 2" are control bits for device address, "4, 5" are the control bits for main device to terminal resistance and spare device to terminal resistance, "6" is control bit for local voice monitor).
- ③ PTT microphone output volume adjustment.
- ④ Volume monitor.
- ⑤ Audio output monitor.
- ⑥ Line input volume adjustment.
- ⑦ EXT. Line input.
- ⑧ DC24V input.
- ⑨ Power switch.

Remote Paging Microphone
VA-6000RT



Descriptions

VA-6000RT is used for remote operating VA-6000 system, allowing users to remotely control system voice information and zones paging. Support system zones/groups selection, zones monitoring, zones volume adjustment, zones status display.

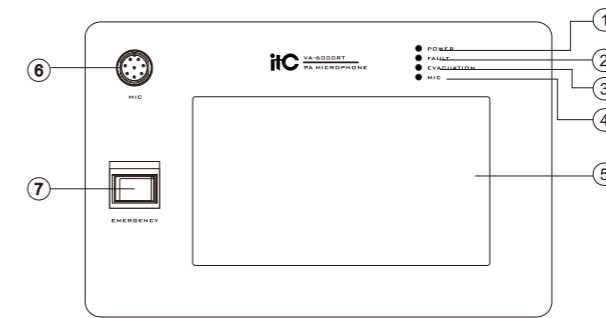
Features

- * IPS HD full view display, graphical touch operation, what you see is what you get.
- * System synchronizes the zones/groups name display, simple operation.
- * The icon partition status display, more images, more content.
- * It can adjust the volume for each zone and monitor the current playing content of each zone.
- * The rear panel can be used for external audio source and can be broadcast to any zone.
- * Standard Ethernet digital transmission can extend the transmission distance through optical fiber.
- * The priority and emergency voice operating privileges of the VA-6000RT can be configured by the system.

Specifications

Model	VA-6000RT
Screen	
Size	7inch
Resolution	1024 x 600
Visual Angle	Full Angle
Touch Screen Type	capacitive screen
Power Supply	
Voltage	24V DC, ±20%
Max Current	0.5A
Max Power Consumption	12W
Standby Power Consumption	9W
Performance Index	
Line Input	
Sensitivity	775mV
Input Impedance	10KΩ
MIC Input	
Microphone Type	415mm Goose Neck MIC
MIC Type	Electret
Sensitivity	10mV
Impedance	250Ω
Monitor Audio Output	
Rated Output	600mV
Output Power	10mW (Drive 16-32Ω earphone)
Frequency Response	100Hz~20KHz
THD	<1% (Rated Output), 1KHz
SNR	>70dB
Monitor Speaker	
Output Power	1.5W
Impedance	4Ω
Mechanical Data	
Dimension(Length x Width x Deep)	245 x 71 x 154mm
weight	Machine: 1.44KG Power Supply: 0.3KG
Installation Type	Desktop
Color	Black
Environment Requirement	
Working Temperature	+5°C ~ +40°C
Storage Temperature	-20°C ~ +70°C
Relative Humidity	<95% (without condensation)

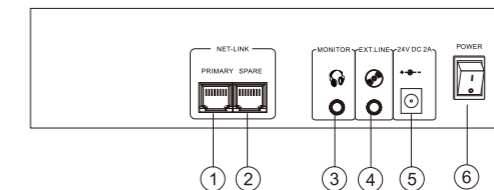
Front Panel



Connectors

- ① Power status indicator
Green—Normal power supply
- ② All devices and modules work status indicator:
(1) Light off—All equipment or modules of the system are working properly
(2) Yellow is bright or flashing—Failure of any device or module (Note: Rapid blinking means the device is offline)
- ③ Emergency voice indicator light
(1) Light off—Warning voice and evacuation voice modules are normal
(2) Yellow—Warning voice and evacuation voice modules have failure
(3) Red—Warning voice or evacuation voice is playing
- ④ The gooseneck microphone status indicator
(1) Light off—The gooseneck microphone is normal
(2) Yellow—The gooseneck microphone has failure
(3) Green—The gooseneck microphone is playing
(4) Green flashing—Being preempted or preemption is not successful
- ⑤ Graphical interaction interface (7 inch touch screen, please refer to the user manual)
- ⑥ System work mode switch
(1) Red flash rapidly—current mode is reset mode, prohibit all manual operation
(2) Red slow flashing—current mode is emergency mode (You can press the button manually to enter or automatically trigger auto-entry, the EVAC voice is allowed in this mode, EVAC voice message is forbidden in normal mode)
(3) Light off—current mode is normal mode
Note: 1. When the indicator is in a flashing state, press to exit the emergency mode.
2. When the indicator is put out, press the button to enter the emergency mode
- ⑦ Gooseneck Microphone socket

Back Panel



Connectors

- ① Network main interface
- ② Network standby interface
- ③ Monitor audio output
- ④ Extend line audio input
- ⑤ DC 24V input
- ⑥ Power Switch

Remote Microphone
VA-6000RM



Descriptions

VA-6000RM is used for remote control VA-6000 system, allowing remotely control the system voice message information and zones paging by users, it can drive 8 zones and extended zones or groups by Microphone Extension unit (VA-6000EM) to 64 zones, each can connect max 7 extension unit and every extension keyboard have 8 zones.

Features

- * One key to select zones/groups, easy to understand and operate.
- * Parallel transmission; extend the transmission distance by CAT-5.
- * Obvious system fault and module status indicator.
- * Supporting zones or groups extension.
- * With line audio input and adjustable input volume.
- * Paging button mode and PTT mode are all available.
- * Supporting redundant wiring.
- * DC 24V Phantom Power supply.

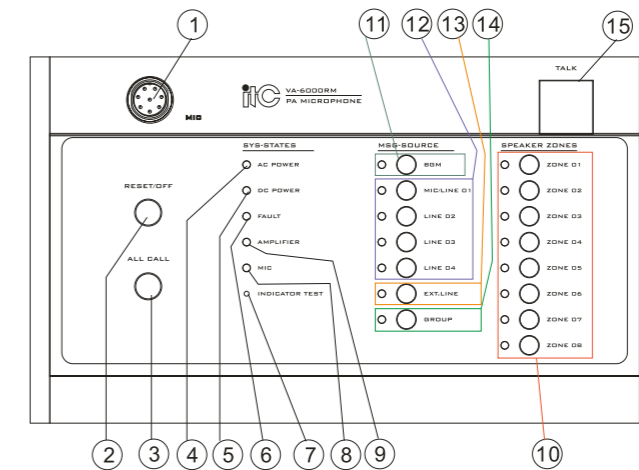
Basic Functions

- * Microphone output level is adjustable.
- * Control priority right is available by VA-6000ST.
- * Build-in Hi-Fi monitor speaker, with monitor output.
- * One-key press enter the paging status.
- * External Headphone jack; can monitor or record paging voice.

Specifications

Model	VA-6000RM
DC Supply	
Voltage	24V DC, ±20%
Max Current	0.1A (not including extended panel)
Power Dissipation	2.4W (not including extended panel)
Performance Index	
Balance Input	
Distortion	<1% (RMS), 1KHz
Frequency	80Hz~16KHz
Sensitivity	500mV
Impedance	10KΩ
Noise Ratio	>70dB
Line Input	
Distortion	<1% (RMS), 1KHz
Frequency	80Hz~16KHz
Sensitivity	350mV
Output Impedance	10KΩ
S/N Ratio	>70dB
Mic	
Sensitivity	5mV
Output Impedance	600Ω
Mechanical Index	
Size (L x W x D)	256 x 52 x 149mm
Weight	About 1.5Kg
Installation	Desktop or 19 inch rack
Color	Black
Environmental Requirement	
Operation Temp	+5℃ ~ +40℃
Storage Temp	-20℃ ~ +70℃
Relative Temp	<95% no condensation

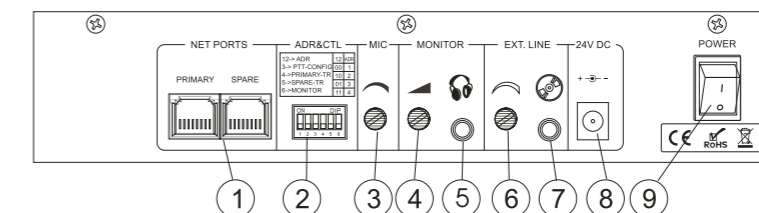
Front Panel



Connectors

- ① Goose Mic. Socket.
- ② Fault reset/Zone off.
- ③ Full zone selection.
- ④ The status indication of main power supply in the system:
(1) off - Normal status of all the equipment and main power supply module in the system.
(2) Yellow - fault status of any equipment or main power supply module in the system. (All or some)
- ⑤ The status indication of backup DC power supply in the system. (All or some. The system. Will ignore the working status, default as normal).
(1) Off - Normal status of all the equipment and backup power supply module in the system.
(2) Yellow - fault status of any equipment or main power supply module in the system.
- ⑥ fault status of any equipment or module in the system:
(1) Off - Normal status of all the equipment and modules.
(2) Yellow - All the equipment or module of the system are in fault status. (All or some)
- ⑦ Testing button of the indicators on the panel; if this button is pressed, the indicators on the panel from green - red - yellow, which means it is in normal status.
- ⑧ The status of the goose mic:
(1) Off - Goose mic. is normal.
(2) Yellow - Goose mic. is fault.
- ⑨ Working status of the amplifiers in the system.
(1) Off - All the amplifiers including backup amplifiers are working normally.
(2) Yellow - All/Any of the amplifiers including backup amplifiers have fault problem.
- ⑩ Zone working status indicator and selection button.
(1) Off - indicates that the current zone is in the normal status of no broadcast or is not configured.
(2) Green - that the current zone is broadcast, the output is normal audio.
(3) Red - that the current zone is broadcast, the output for the EVAC voice or remote paging broadcast such as RM / FM / PSTN.
(4) Yellow - indicates that the current zone has fault.
- ⑪ BGM control of the master unit.
(1) Off- the background music player and the music in memory card is normal.
(2) Green - background music is playing.
(3) Yellow - background music files are missing or the player is faulty.
- ⑫ Host line input 01 ~ 04 Working status indicator and audio selection control button:
Off - line input 01 ~ 04 no work.
Green - line input 01 ~ 04 is playing.
- ⑬ Gooseneck microphone and line input audio selection indicator and its input audio selection button.
Off - the device is in the microphone input status.
Green - the device is in the extended line input status.
- ⑭ Device zone / group mode indicator and its function selection button.
Off- the device is in zone mode control.
Green - the device is in group mode control.
- ⑮ Paging switch.

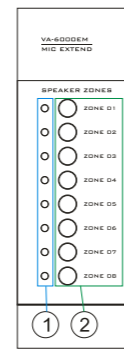
Back Panel



Connectors

- ① Equipment network master, standby interface (connect with host VA-6000MA with connection interface of remote MIC).
- ② Device networking address and function configuration (the "1,2" bit of the DIP switch is the device address control bit, the "3" bit is the configuration panel "1,5" Paging button control mode - Touch Type or PTT mode, the "4,5" bit is "master, standby" the terminal resistance control bit. the "6" bit is the local speech monitoring control bit).
- ③ PTT microphone output volume adjustment potentiometer.
- ④ Monitor the volume adjustment potentiometer.
- ⑤ Monitor audio output, can be external monitor headphones or other monitoring equipment.
- ⑥ Extended line input volume adjustment potentiometer.
- ⑦ Extended line audio input interface.
- ⑧ DC24V input (when the transmission distance is more than 50 meters, It will need to connect with external DC24V power supply).
- ⑨ Power switch.

**Microphone Extension Unit
VA-6000EM**



Connectors

- ① Zone status indicator light.
- ② Zone/ group selection key.

Specifications

Model	VA-6000EM
DC Power	
Power Supply	5V DC, ±3%
Maximum Current	0.1 A
Power Consumption	0.5W
Machine Index	
Size (L x W x D)	66 x 52 x 149mm
Weight	About 0.5 Kg
Mounting	Desktop
Color	Black
Environment	
Operation Temperature	+5°C ~ +40°C
Storage Temperature	-20°C ~ +70°C
Relative Temperature	<95% (No condensation)

Descriptions

VA-6000EM is extension unit for VA-6000FM/RM, to provide more zone display and control. One microphone can add seven extension units VA-6000EM at most. Each extension has 8 key and zone indicator light.

Features

- * One key zone/ group selection, easy to understand and operate.
- * Clear working status of different zones.

**Terminal Detector
VA-6000T**



Descriptions

- * Integrated aluminum body, elegant appearance.
- * To be installed at the end of each speaker loop, work with VA-6000MS/VA-P8500S to detect the status of the speaker loop.
- * No need external power supply, easy installation and wiring.
- * No need external power supply, convenient for engineering wiring and installation.

Specifications

Model	VA-6000T
MAX Current	0.01A
Power consumption	≤1W
Machine Index	
Size (L x W x D)	156 x 32 x 48mm
Weight	About 200g
Installation	Desktop or Wall mounted
Color	Black
Environment Requirements	
Operation Temp	+5°C ~ +40°C
Storage Temp	-20°C ~ +70°C
Relative Temp	<95% (No condensation)

**Controller
VA-6000G**



Descriptions

- * The operating carrier of the digital voice alarm broadcast software is the control center of the PA system.
- * It is installed in the control room to manage the entire PA system in real time.

Feature

- * Adopt industrial cabinet, steel structure, with excellent anti-magnetic, dust-proof and anti-shock capability.
- * 17.3" LED screen is built in five-wire industrial reinforced touch screen. Easy-to-use touch screen control.
- * Built-in industrial-grade telescopic keyboard, built-in industrial-grade touch mouse panel + left and right button design, support external mouse and keyboard through USB interface, convenient for users to operate.
- * Industrial-grade dedicated motherboard design, Intel Core i5 quad-core processor, faster processing, more powerful performance. It can work continuously for a long time.
- * Built-in 128GBmSATA SSD has the characteristics of anti-vibration, anti-fall, fast reading and writing speed, low power consumption and so on.
- * Equipped with 8 USB ports and 6 universal serial ports to facilitate the expansion of peripheral equipment access.
- * Equipped with 1 channel gigabit network card, compatible with 100 MB network. Adaptive switch connection system.
- * Support dual graphics card, which can be connected to the maximum Full HD display device.
- * It has a short circuit to trigger the boot interface, which is used for the external device timing drive to boot and realize the unattended function.
- * Support automatic boot when power-on, timed automatic boot, timed automatic shutdown functions for convenient and flexible operation management.
- * After the server software is carried, it constitutes the system management control center. The server software runs under the background system service. It is an enterprise-level standard server working mode. The booting system can run automatically, which is more stable and reliable than the software running in the foreground of the interface.
- * Support recording storage function. You can customize the recording file save path in the background.
- * Support DHCP, compatible with any network structure such as routers, switches, bridge gateways, Modem, Internet, 2G, 3G, 4G, multicast, unicast, etc.

Specifications

Model	VA-6000G
Screen size	17.3"
Screen color	TFT262144 true color
LED screen	17.3" high-resolution LED LCD screen (1920*1080)
Touch screen	10-point capacitive touch screen
Working temperature	-10°C ~ 50°C
Relative humidity	10%~95%, no condensation
Standard interface	6×serial port; 1×HDMI, 1×VGA; 8×USB port;
Storage	Support 3.5", 2.5", mSATA hard disk; standard: mSATA 128G
RAM	DDR3 1333/1600 MHz 16GB(MAX); standard: 8G /DDR3/ 1600 MHz
Network card	1 Realtek GbE, 1000M
CPU	Intel Core i5 3.10GHz quad-core
System audio SNR	LINE: 70dB; MIC: 60dB
System audio signal THD	1KHz<0.5%
System audio signal standard input level	LINE: 300mV; MIC: 5mV
System audio signal standard output level	0dBV
Power supply	Input voltage: AC100V-240V
Software operating platform	Windows server 2008
Dimension(W × H × D)	484mmx358.5mmx306.5mm (excluding handle)
Weight	18.40kg

Monitor
VA-6000TB



Descriptions

The monitor can work together with the power amplifier and changeover to detect the working status of the broadcast loop bus in real time. It is not affected by the music signal, does not require external power supply, and is simple and convenient to install.

Features

- * 86 type cast aluminum body, waterproof, moisture-proof and explosion-proof;
- * Stainless steel line card terminal, support 4-8mm thick leads;
- * Installed at the end of the broadcast loop, it works with digital power amplifier equipment to detect the working status of the speaker loop bus in real time;
- * No external power supply is required, and the installation is simple and convenient.

Specifications

Model	VA-6000TB
Maximum current	0.01A
Maximum power consumption	≤0.5W
Color	Grey
Installation method	Wall hanging
Operating temperature	0°C~+45°C
Storage temperature	-20°C~+70°C
Relative temperature	< 95%
Dimensions (length × width × height)	80×76×57mm (excluding line card); 117×76×57mm (including line card)
Net weight	About 0.5kg

IP PA Intercom Unit
Embedded software: Digital IP terminal intercom embedded software V2.06
T-6711A



Descriptions

The T-6711A is an IP PA intercom terminal to ask for help with one button. It is designed for not only the safe city, large park, tunnel, mining plant, but also broadcasting and BGM playback.

Feature

- * Metal housing, piano baking varnish, industrial safety protection standard, sturdy and durable. It can be fixed on outdoor vertical montant.
- * Embedded PC technology, built-in DSP and high speed industrial chip to ensure start time less than 1 second.
- * Built-in single network hardware audio decoding module, support TCP/IP, UDP, IGMP (Multicast) protocol, transmit 16-bit audio signal as same as CD quality through network transmission.
- * Built-in voice intercom module, full-duplex voice intercom and call. With high-performance DSP audio processor, it supports digital AEC and ANC.
- * Built-in 5W hi-fi full-range speakers to ensure clear and loud sound; built-in 50W resistance amplifier for outdoor PA require. Built-in 50W digital fixed impedance amplifier, which can be connected with a fixed impedance outdoor column or horn speaker for outdoor sound reinforcment.
- * Built-in high sensitivity microphone, support hands-free call, custom reply, long-distance voice pickup and original sound output.
- * Built-in monitor supporting service level recording management, built-in auxiliary IO to perfectly integrate with monitor system.
- * One-channel short circuit input and one-channel short circuit output; input is used for the signal and data correcting, the output is for monitoring video linkage.
- * Built-in automatic mute control circuit. Class D digital amplifier will automatically switched to the mute state when there is no broadcast or help.
- * Built-in 1-channel controlled power is used for actuating the alarm lamp and warning facility.
- * Support custom call, fast call and help with one button.
- * Support for multiple call modes, including call waiting, call forwarding, no answer reminder.
- * Support the customization of call forwarding time, no answer time, the call waiting time.
- * Support call forwarding manually and automatically. Call forwarding number could be set.
- * Support fast play program library preset, support remote trigger for network broadcast .
- * Optional hang up modes, initiative or passive mode.
- * Support PSTN telephone broadcast, voice message broadcast.
- * Support broadcast through phone WIFI or wireless remote controller.
- * IP55 protection level, aluminum material and anti-dismounting screw for waterproof and puncture resistant ability.
- * Support DHCP. Compatible with router, switch, bridges gateway, Modem, Intelnet, 2G, 3G, 4G, multicast, unicast and other network structure.
- * Digital product, easy expansion, no geographical restriction, no additional management equipment, common network design concept free of line construction, easy installation.
- * 24V DC power supply is customized to satisfy outdoor solar battery power supply demands.

Specifications

Model	T-6711A
Network Interface	Standard RJ45 input
Communication Protocol	TCP/IP, UDP, IGMP (multicast)
Audio Format	MP3
Sampling Rate	8KHz~48KHz
Transmission Speed	100Mbps
Audio Mode	16-bit CD sound quality
Frequency Response	80Hz~16KHz
T.H.D	≤1%
SNR	>70dB
Operating Temp	-20°C~60°C
Humidity	20%~80% relative humidity, no condensation
Power Consumption	≤100W
Power Supply	~220V 50Hz
Protection Level	IP55
Dimension	480×370×130mm
Weight	9.7Kg

Moment KVM system client management software V6.34 TV-6100R



Descriptions

The Optical Moment system is a device that integrates keyboard, video and mouse, and can control and manage remote servers and computers through optical fiber transmission. It can be widely used in finance, operational data centers, military, medical and other fields to improve operational efficiency and data security.

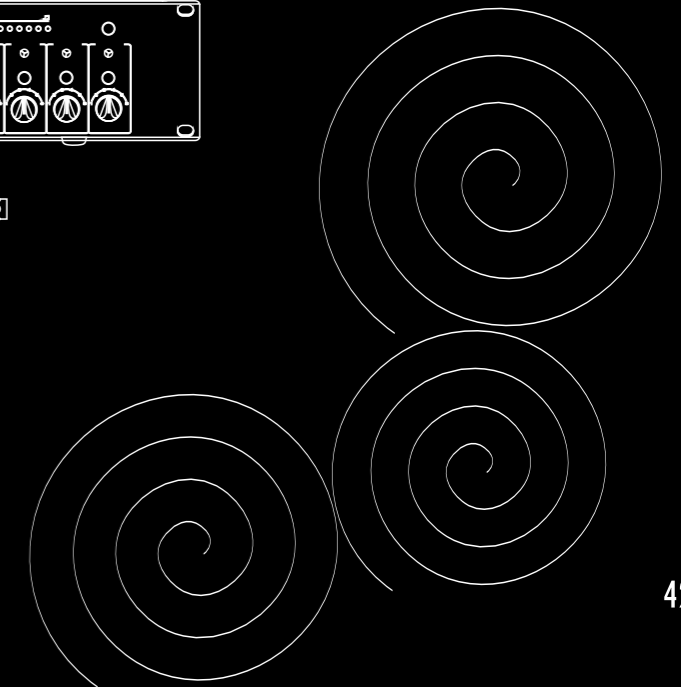
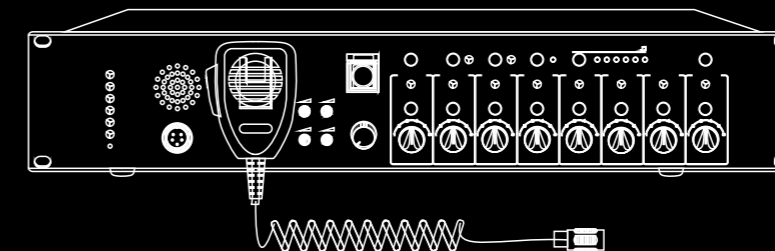
Features

- * Support multiple types of signal input, support signal source classification, filtering, and search functions, quickly locate the signal source and switch it to the workstation;
- * Support mouse roaming function between multiple screens of KVM workstations, support mouse roaming function for single-screen multi-image of KVM workstations;
- * Support multi-user collaboration, support pushing/capturing any image to the display, support user operation interaction reminder, accept or reject the other party's request;
- * Support hot-plugging of fiber optic cables, support dual-link backup, and automatically switch to the backup link when the main link fails;
- * Support transparent transmission of various USB devices, such as USB flash drives, fingerprint scanners, portable optical drives, USB touchscreens, etc.;
- * Support board plug and play without complex configuration, easily deploy the system;
- * Support controller backup, system can detect faults and switch between primary and backup instantaneously;
- * Visual preview of signal sources, making it more intuitive and easier to use, support personalized signal source collection and polling function, as well as one-button clearing of the polling list;
- * Support four-screen display, single screen can simultaneously display four images, to obtain a larger and clearer image effect;
- * Signal source list, support two modes of list mode and preview mode, support signal source status filtering, precise and fuzzy search of signal sources;
- * Support double-click to call scenario plans, support precise and fuzzy search of scenario plans;
- * Support high frame rate visual preview display, support previewing up to eight images at the same time, can directly drag and drop signal sources from the signal source list to the workstation for display;
- * Support device monitoring, when detecting abnormal conditions of these devices, the system will immediately provide prompts or warnings to the user through alarm information;
- * Support custom resolution, can set the output resolution of a single display box, with higher application flexibility;
- * Achieve human-machine separation through KVM function, deploy servers or computers in the computer room, physically isolate them from business operators, achieve unattended computer room, save space, isolate noise and heat, facilitate server management, and ensure data security;
- * Display the status and connection of display boxes and signal source devices, click on a single device to display the devices corresponding to the same link, facilitate quick positioning of device locations;
- * Support batch restart of signal source devices, batch setting of audio input mode for signal sources, support device status filtering, device name/ID search;
- * Support batch restart of display box devices, batch setting of USB pass-through switch, output resolution, audio output resolution, EDID setting, support device status filtering, device name/ID search;
- * Support batch upgrade of devices, support batch upgrade operation for all platform devices, simplify operation steps and improve efficiency;
- * Support configuration of corresponding shortcuts for individual users, configure shortcuts for signal pushing, signal capturing, video connection, operation connection, and scenario calling;
- * Support seat grouping function, associate data of the same group management together by creating seat groups;
- * Support multi-role management, customize role management scope, finely divide KVM signal sources, support user priority setting, high-level, intermediate-level, low-level and other levels, high-level personnel can directly obtain the operation permission of low-level personnel, while low-level personnel need to request the consent of high-level personnel;
- * Support division of signal source areas and groups, quickly locate the position of signal sources;
- * Support customization of scenario content, can set seat events, one-click linkage tasks, no need for multiple people to operate, save manpower and time;
- * Support recording user operations, facilitate problem tracing, support batch deletion or export of logs and other functions.
- * On the user side, support seat authorization and shortcut key operations through the OSD end.

Installation Environment

Model	TV-6100R
CPU performance not lower than the 7th generation Core i5 desktop processor	I5-7400
Memory 4GB and above	DDR4 2133 4GB
Hard disk SSD solid state disk, capacity above 64G	120G SSD
Windows 7 64-bit and above operating system	Windows7 Ultimate SP1
Resolution	1920*1080

Fire Emergency Broadcasting System VA-6200



Voice Evacuation Alarm System

Product Overview

VA-6200 is a system designed for emergency broadcast and voice playback requirements, complying with EN54-16 standard. The system provides multi-machine cascade function, and is composed of VA-6200MA host, VA-6200MS expansion host and VA-6200RM remote paging microphone. The maximum paging microphone quantity can be cascaded 19 VA-6200MS, extended to 160 partition 320 loop (A + B), up to 32 VA-6200RM remote paging microphones can be configured.

VA-6200 system uses advanced power distribution. All partitions share a 500W power amplifier, which can reduce the cost of each partition configuration, very suitable for multi-partition low-power occasions. The system has power amplifier detection and automatic backup function.

VA-6200 fire emergency broadcast system with high investment efficiency of the modular MPU control, while supporting multi-line fire alarm controller linkage, the interface problem between different systems no longer exist; with independent research and development of the system fault automatic diagnosis technology, the speaker Line automatic detection technology, making the system running more secure, stable and reliable, and significantly reduce the pre-procurement cycle and future maintenance costs.

VA-6200 alarm system adopts a full modular design, modern technology, after long-term industry experience and system stability and stability of the test to ensure its stability. The system can play the local background music without fire disaster, once the fire alarm immediately into the fire alarm for the state, the system is powerful, simple, user-friendly. Widely used in financial centers, star hotels, office buildings, and commercial center, also applies to petrochemical, power, metallurgy, steel and other industrial areas.

Product Features

Designed According to EN54-16 standard

It conforms to European EN54-16 Fire Broadcasting Specification.

Integrating Emergency Broadcast and Voice Broadcast

Integrated voice programmable broadcast, voice evacuation and other functions; simple operation, flexible configuration.

Simple System Equipment Connection

Only one Cat5 cable between system equipment, you can achieve control and audio transmission, support hand in hand. Wiring is simple and convenient that you do not need to switch network, which helps reducing system cost.

Each Partition Of the System Is Designed with A + B Double Loop

System partition adopts A, B dual-loop design, even if the partition of any circuit failure, the partition can still work properly to ensure the stability of the system work and reliability.

System Can Connect 32 Remote Microphones

VA-6200RM adopts CAN bus communication, the use of CAN bus multi-master advantage, making multiple VA-6200RM online use, the user's operation can be timely host response.

System Supports Fire PTT Emergency Paging Recording Function

Fire mode, the system host PTT paging automatic recording, without human operation, generate a recording file automatically saved on the host SD card, user-friendly access.

Real-time Monitoring of Operating Status, Fault and Emergency Records ≤ 6000

System equipment status real-time detection, automatic fault diagnosis, record the fault status (≤ 6000).

Simple and Intuitive User Interface, A Key to Call, It Upgrades the User Experience

VA-6200MA system controller adopts one-button emergency call. It improves the speed of response in an emergency situation more effectively and sure no risk at all.

Flexible Zones / Group Paging Operation

VA-6200RM remote microphone can distribute the system zones, zones emergency paging, real-time synchronize the corresponding controller zones circuit status; through the PC software to configure the required group associate with any zones.

Efficient and Environmental Class D Amplifier

The CLASS-D series of power amplifiers developed with a professional audio concept offers high energy conversion efficiency, consuming less energy compared with the conventional amplifiers at the same output power.

Product Functions

Controller Multi-source Input

The system controller supports 2-channel emergency audio input, 2-channel emergency microphone input, 4-channel line input, 1 PTT emergency broadcast, 1 remote microphone input. All input audio sources can be output to the specified zones via the PC software settings, or by the front panel zones selection.

System Support Zones A, B Loop Circuit State Detection

The system controller has zones A, B loop circuit status detection, upload, record, can help users to discover the system circuit problems. Detect accuracy can be configured, and the mode can be selected.

Remote Broadcast and Input Mode

VA-6200RM supports remote paging, one-key call, one-key reset, the line input mode can be selected, the address code can be viewed, and the controller can be set to connect the location of application functions. The system supports up to 32 remote paging microphones, transmission distance ≤ 1 km.

Support Recording Function

System controller support fire mode, PTT emergency paging automatic recording function.

A Variety of Programmable Voice Alarm Mode

System alarm trigger input can be configured for the all zones alarm, specify the zone alarm, set up conveniently.

Amplifier Backup

VA-6000 system host has a power amplifier backup function to ensure that the main amplifier failure, the backup power amplifier automatically replace to ensure that the system can work properly.

Two Kinds of Volume Control Relay Way

It provides three-wire and four-wire system, two kinds of volume control relay way to meet the different places volume control relay demand, product application more flexible.

Real-time Monitoring of Peripheral Functions

System equipment with power supply, working status, fault indication and other real status indicator, the user can intuitively, quickly observe the operation of the equipment.

Real-time Status Output

The system controller has fault and working status output interface, Controller cascade third party equipment, real-time submit system running state.

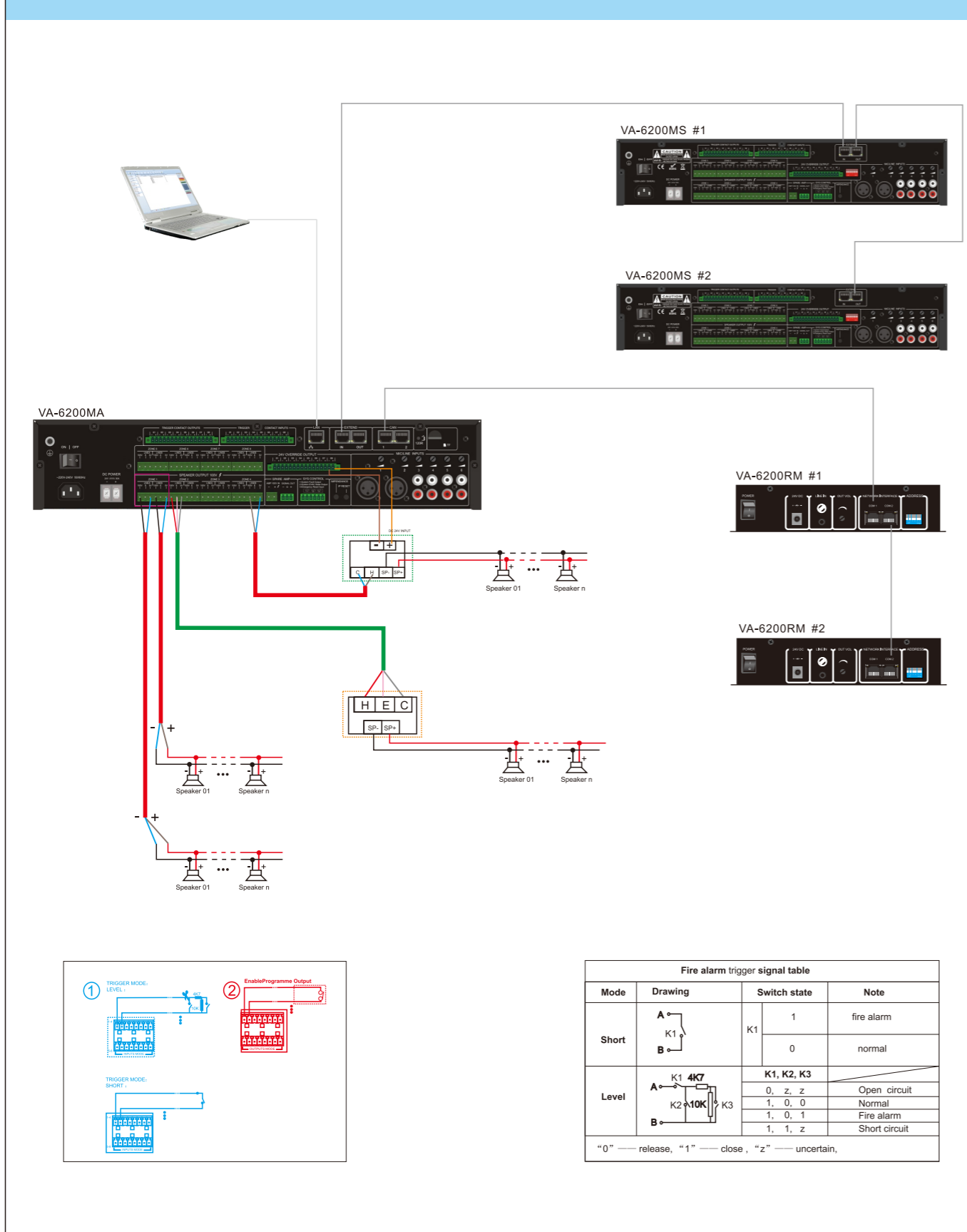
One Key Page, One Key to Reset

The system controller has a panel emergency call microphone and a one-button reset function improve the speed of response in an emergency situation more effectively and no risk at all.

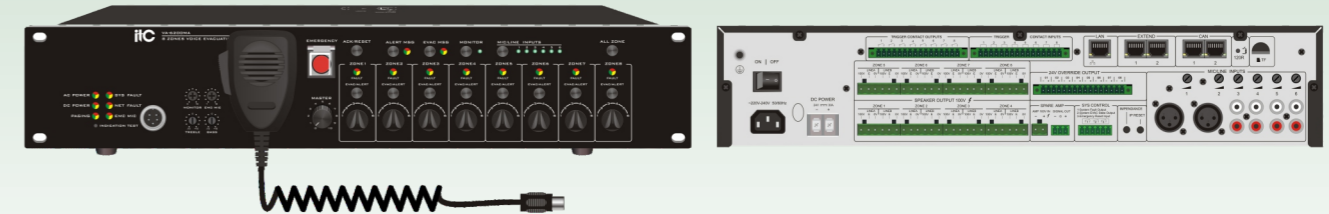
User-friendly Design, Support Offline Work

User-friendly design to enhance the sensory enjoyment, but also save more installation space, reduce installation and wiring costs, supporting multi-language PC software interface control, the system controller can independently work without the PC software after configuration.

Voice Evacuation Alarm System Connection Template



Controller
VA-6200MA



Descriptions

Intelligent Public Address and Voice Alarm system is the organic combination of computer network technology, communication technology, information technology and so on. It is a combination of related voice alarm system. Through the PC management software, you can do system function customization and control, automatic completion of the system physical zone status monitoring and management, automatic completion of the terminal equipment monitoring and management. It is mainly used in intelligent residential quarters, shopping malls, shopping centers, and buildings such as voice alarm and background music.

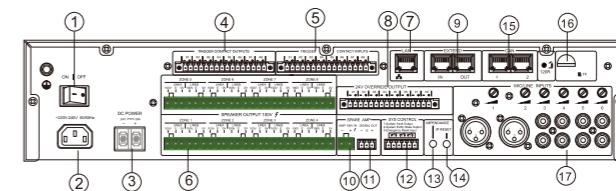
Features

- * Built-in 500W amplifier, integrated 8 zones A + B independent dual speaker loop partition output, the partition has a separate LED indicator, a separate output control button and volume adjustment.
- * Audio processing with 6 general audio inputs, it can connect with an external user microphone, CD player, radio and other audio signals, and can be achieved in any partition to play any audio source. Among them, 2 channels have 24V phantom power microphone input, and 4 channels are AUX input.
- * The local emergency PTT microphone input (remote microphone, emergency voice), allowing users to freely change the audio output priority according to the actual situation, to configure audio input priority through the system control software.
- * Integrate MP3 function module, use LCD display, support TF card, U disk MP3, WMA, APE, FLAC, WAV, AAC and other file formats, and can display song names. Configure MP3 remote control, support power-off memory and radio functions
- * With an external backup power amplifier input, when the built-in amplifier is failed, it can automatically switch to the backup amplifier.
- * Support automatically monitoring the working condition of the each zone speaker loop (open circuit, short circuit).
- * 8-channel trigger input and output interface, it can trigger the pre-programmed language information to the specified partition or (trigger) corresponding to the external power supply to achieve the corresponding event warning.
- * It is integrated independent EVAC voice information player.
- * Remote MIC online interface, it can be connected to a remote microphone and voice alarm microphone. The paging station connection using standard RJ-45 network port and CAT-5 network cable, paging transmission can be used to transmit long-distance transmission;
- * With controller connection interface, it can be connected to the expansion machine. The connection uses the standard RJ-45 network port and CAT-5 cable transmission
- * With a TCP / IP communication interface to support the basic Window platform visual interface operation, the state automatically synchronized.
- * Support 24V DC power supply.
- * With the monitor function of power amplifier.
- * Built-in recording function, no need external equipment.
- * With system failure, emergency dry contact output, emergency reset dry contact input.
- * The partition output with three-wired, four-wired relay function.
- * With one IP address reset port.

Specifications

Model	VA-6200MA
Power output	500W
Output voltage	100V
MIC1-2 input distortion	<1% (rated output power), 1KHz
MIC1-2 input frequency response	80Hz~20KHz
MIC1-2 input sensitivity	5mV/600Ω
MIC1-2 input SNR	>65dB
AUX3-6 input distortion	<1% (rated output power), 1KHz
AUX3-6 input frequency response	80Hz~20KHz
AUX3-6 input sensitivity	350mV/10kΩ
AUX3-6 Input SNR	>70dB
Emergency microphone	Emergency microphone
Sensitivity	10mV
Impedance	600Ω
Standby amplifier input	100V
Standby amplifier audio output	±385mV (balanced output)
Alarm input	8 channel
Alarm Output	8 channel
Partition output	8 channel
24V relay output	8 channel
Short circuit mode	No voltage, short connection
Level mode	Require external 10K and 4.7K resistors
Cooling method	Air-cooled
Protection mode	Delay / over temperature / short circuit / overload
Output volume adjustment	6
Built-in MP3 capacity	16G
Format	MP3
Slave Controller Communication	RS485 bus
Slave Controller	Support 19 slave controllers
Remote MIC communication	CAN bus
Remote MIC	Supports 32 remote MIC
Supply voltage	~ 220V-240V, 50/60Hz
Maximum current	3A
Fuse specifications	250V / 5A, slow type
Standby voltage	24V DC, ±20%
Maximum current	30A
Maximum power consumption	600W
Dimension (L x W x D)	484 x 88 x 353mm
Weight	About 10.8kg
Installation method	Desktop or 19" cabinet

Back Panel



Connectors

- Power switch
- AC power outlet
- DC 24V input interface
- Short circuit interface is output after fire alarm
- Fire trigger input interface
- Zone 1~8
- Switch network, Computer online port
- Control interface of 4 wire tone controlled cutting relay
- Slave port
- Backup power amplifier 100V input interface (Note the positive and negative poles)
- Signal output interface, Backup power amplifier input port
- System Control:
 - System fault output, When something goes wrong, This port will be closed
 - Fire alarm output, When the fire alarm is triggered, This port will be closed
 - Emergency reset input, Short circuit interface, Fire alarm will be reset
- Impedance correction button, Press this button, system will automatically calibrate and record the current impedance
- IP address reset button, Press this button, system will automatically reset addresses
- Remote control microphone port
- TF card interface
- 6 background music input

Extension Controller
VA-6200MS



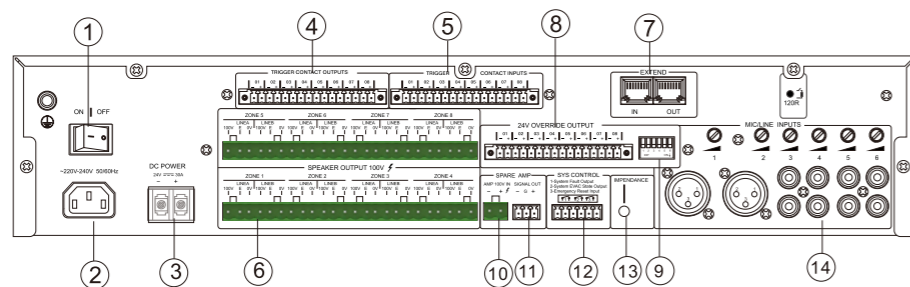
Features

- * Built-in 500W amplifier, with 8 zones and A+B independent dual speaker loop output, each zone has independent LED indicator light, output control button and volume adjustment.
- * Audio processing with 6 general audio inputs and 1 MP3 input, it can connect with external microphone, CD player, tuner and etc, it can play any audio source in any zone. Among them, 2 channels have 24V phantom power microphone input, 4 channels are AUX input and 1 channel is MP3 audio channel from the controller.
- * With fault self-check of power-on system, and fault full check of manual system function.
- * With real-time indication of system status.
- * Connecting with one backup amplifier, when built-in amplifier damaged, it will switch to backup amplifier automatically.
- * Automatically monitor every zone speaker loop status (open circuit, short circuit) in real-time.
- * 8-channel short-circuit/level trigger mode, the trigger response can be configured with 3 different channels of EVAC, ALERT, and LINE3, and the output can be arbitrarily configured with partition, group, and short-circuit contact combination.
- * Support external 24V backup power supply, realize power-off continuous normal operation without delay;
- * Extension port can connect controller and next extension device.
- * The partition output has three-wire and four-wire forced-cut adjustment functions.

Specifications

Model	VA-6200MS
Rated Power Output	500W
Output Voltage	100V
MIC1-2 Input Distortion	<1% (output rating), 1KHz
MIC1-2 Input Frequency Response	80Hz~20KHz
MIC1-2 Input Sensitivity	5mV/6/600Ω
MIC1-2 Input SNR	>65dB
AUX3-6 Input Distortion	<1% (output rating), 1KHz
AUX3-6 Input Frequency Response	80Hz~20KHz
AUX3-6 Input Sensitivity	350mV/10kΩ
AUX3-6 Input SNR	>70dB
Spare Amplifier Input	100V
Spare Amplifier Audio Signal Output	±385mV (balanced output)
Alarm Input	8
Alarm Output	8
Zone Input	8
24V Relay Output	8
Short Circuit mode	short circuit
Type of cooling	air-cooled
Guard mode	delay/overheat/ short circuit/ overload
Output Volume Control	6
Supply Voltage	~ 220V-240V, 50/60Hz
Maximum Current	3A
Fuse Size	250V/5A, slow type
Spare Voltage	24V DC, ±20%
Maximum Current	30A
Maximum Power Consumption	600W
Dimensions (L x W x D)	484 x 88 x 353mm
Weight	10.5kg
Installation method	Desktop or 19" cabinet

Back Panel



Connectors

- ① Power switch
- ② AC power outlet
- ③ DC 24V input interface
- ④ Fire alarm trigger output node
- ⑤ Fire alarm trigger input node
- ⑥ 3 wire power amplifier 100V output
- ⑦ 485 Online interface
- ⑧ DC 24V output
- ⑨ Unplug code switch from computer address
- ⑩ Backup power amplifier 100V input
- ⑪ Backup power amplifier signal output
- ⑫ SYS CONTRCL:
 - 1) System fault output, When something goes wrong, This port will be closed
 - 2) Fire alarm output, When the fire alarm is triggered, This port will be closed
 - 3) Emergency reset input, Short circuit interface, Fire alarm will be reset
- ⑬ Impedance correction button
- ⑭ 6 way background music input

Paging Microphone
VA-6200RM



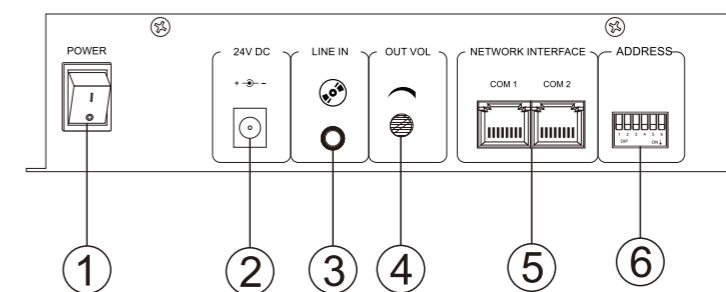
Features

- * Support 16 zones, group paging button.
- * System max support 32 remote paging microphones.
- * Microphone support anti-misoperation plug.
- * Support line audio input, and input/output volume is adjustable.
- * Paging priority can be set by software.
- * Support 24 DC power supply.
- * Remote MIC/Controller has 2 cascade interfaces, 1 in and 1 out.
- * Optional paging to the main controller or extension controller.

Specifications

Model	VA-6200RM
MIC	Capacitor Microphone
MIC Sensitivity	10mV/600Ω
MIC Frequency Response	200Hz~10KHz
MIC SNR	>65dB
Line Input Sensitivity	775mV/10KΩ
Line Input Frequency Response	80Hz~16KHz
Line Input SNR	>70dB
Signal Output	1V
Distortion	<1% (Rated output power), 1KHz
Supply Voltage	24V DC
Dimension (L x W x D)	256 x 52 x 149mm
Net Weight	1.3kg

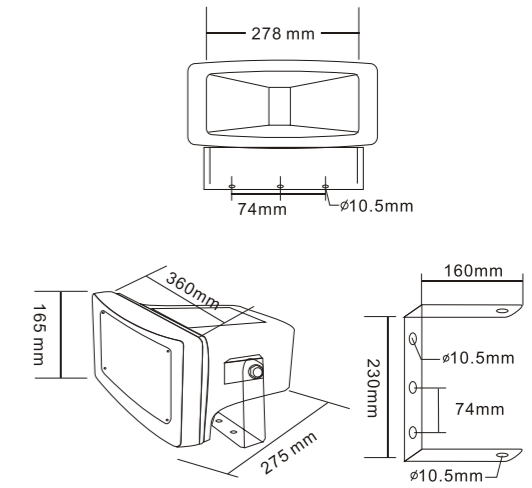
Back Panel



Connectors

- ① Power switch
- ② DC voltage input
- ③ Line Sound source input
- ④ Output volume adjustment
- ⑤ CAN Communication network port
- ⑥ Dial code setting:(Upward: Use Down: Close)

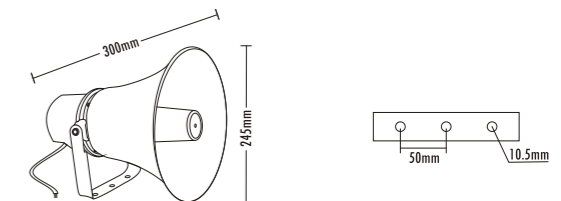
Weatherproof Horn Speaker
VA-710A



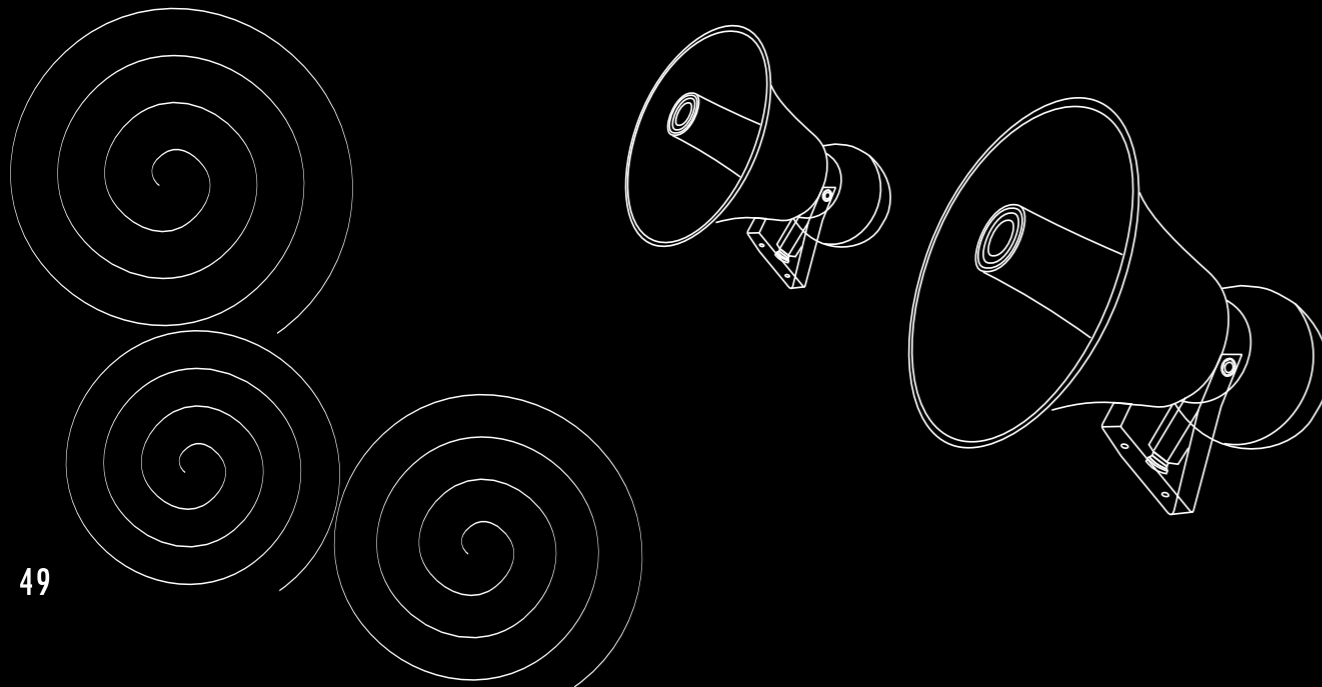
Model	VA-710A
Power Taps @100V	15W, 30W
Power Taps @70V	7.5W, 15W
Impedance	Black: Com/White: 330Ω/Green: 670Ω
SPL	113dB ±3dB
Frequency Response	300-18KHz
Finish	Baffle: ABS
Speaker Driver	5" x 1
IP Rate	IP x 6
Dimension	360 x 165 x 275mm
Weight	3.1Kg
Mounting	With mounting bracket fixed by screw

Fireproof Speaker

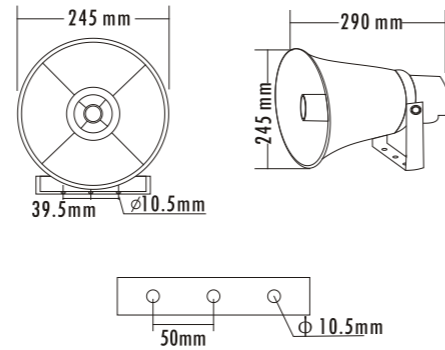
Weatherproof Aluminum Horn Speaker
VA-720G



Model	VA-720G
Power Taps @100V	15W, 30W
Power Taps @70V	7.5W, 15W
MAX output	60W
Impedance	black: COM green: 670Ω white: 330Ω
SPL(1W/1M)	300-13KHz
Frequency Response	102dB±3dB
Finish	Baffle: Aluminum, White
IP Rate	IP x 6
Dimension	245×245×300mm
Weight	2.4Kg
Mounting	With mounting bracket fixed by screw

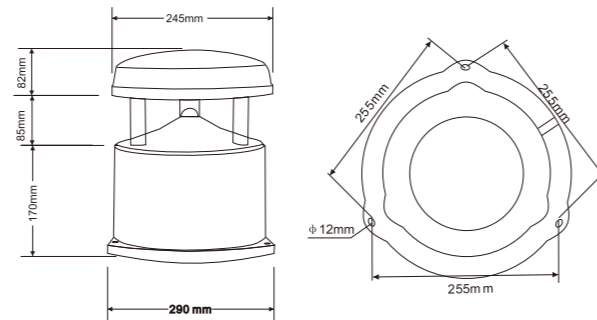


**Weatherproof Aluminum Horn Speaker
VA-720R**



Model	VA-720R
Power Taps @100V	15W, 30W
Power Taps @70V	7.5W, 15W
Impedance	Black: Com Green: 670Ω White: 330Ω
SPL(1W/1M)	102dB ±3dB
Max. SPL (Rated W/1M)	118dB
Frequency Response (-10dB)	300-13KHz
Finish	Baffle: Aluminium, Rare Cover: ABS, White
IP Rate	IPx6
Dimension	245 x 245 x 290mm
Weight	1.9Kg
Mounting	With stainless mounting bracket fixed by screw

**Landscape Garden Speaker
Material: polyethylene material
VA-1910S**



Note: Due to continuous product updates, please refer to the actual product for its color and installation size. This leaflet is for informational purposes only.

Model	VA-720G
Power (100V)	15W, 30W
Frequency response	120-15KHz
Sensitivity	95dB
Maximum SPL	110dB
Speaker unit	6.5"
Protection class	IP66
Installation size	255x255x255mm
Weight	2.91Kg
Product size	290x300x337mm

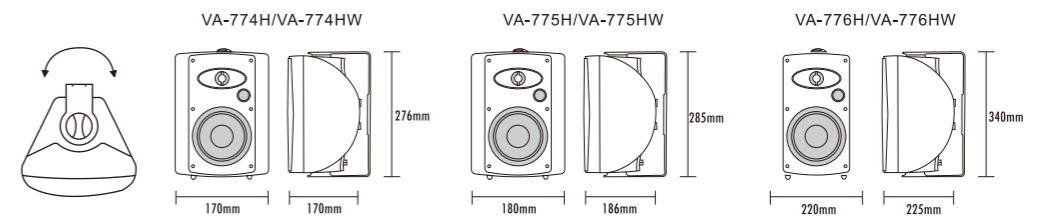
**Wall Mount Speaker
VA-774H/VA-775H/VA-776H/VA-774HW/VA-775HW/VA-776HW**



VA-774H VA-775H VA-776H



VA-774HW VA-775HW VA-776HW



Descriptions

- * Material: plastic
- * Features: Indoor high-grade wall mount speaker, multi-power constant resistance constant pressure choice, modern arc design, 2 frequency division design, cost-effective, easy to install. Applicable to hotels, conference halls, etc. voice message.
- * EN54-24 certification is under taken.

Model	VA-774H/VA-774HW	VA-775H/VA-775HW	VA-776H/VA-776HW
Power Taps @100V	2.5W, 5W, 10W, 20W	3.75W, 7.5W, 15W, 30W	5W, 10W, 20W, 40W
Power Taps @70V	1.25W, 2.5W, 5W, 10W, 20W	1.9W, 3.75W, 7.5W, 15W, 30W	2.5W, 5W, 10W, 20W, 40W
Max output	40W	60W	80W
Transformer Impedance	4KΩ/2KΩ/1KΩ/500Ω/250Ω	2.6KΩ/1.3KΩ/670Ω/330Ω/165Ω	2KΩ/1KΩ/500Ω/250Ω/125Ω
Input	70V/100V/8Ω	70V/100V/8Ω	70V/100V/8Ω
SPL(1W/1M)	86dB	88dB	89dB
Max. SPL (Rated W/1M)	99dB	103dB	105dB
Frequency Response (-10dB)	120-18KHz	100-18KHz	100-20KHz
Finish	Baffle: ABS, Black/White Grille: Steel, Black/White	Baffle: ABS, Black/White Grille: Steel, Black/White	Baffle: ABS, Black/White Grille: Steel, Black/White
Speaker Driver	4" x 1 1.5" x 1	5" x 1 1.5" x 1	6" x 1 1.5" x 1
Dimension	276 x 170 x 170mm	285 x 180 x 186mm	340 x 220 x 225mm
Weight	2.3kg	2.7kg	4.1kg
Mounting	With mounting bracket fixed by screw	With mounting bracket fixed by screw	With mounting bracket fixed by screw