



BUILD A WORLD-CLASS BRAND



Digital Audio Management System

Guangdong Baolun Electronics Co., Ltd

Add: Building A13-1 Yiku Industrial Park, The Hills, Dongyi Road Panyu District Guangzhou China 511492

Tel: +86-20-34549655, 84593197, 31104730, 31104729 Fax: +86-20-84548799

Website: www.itctech.com.cn E-mail: info@itc-pa.com.cn

* Specifications are subject to change without notice.

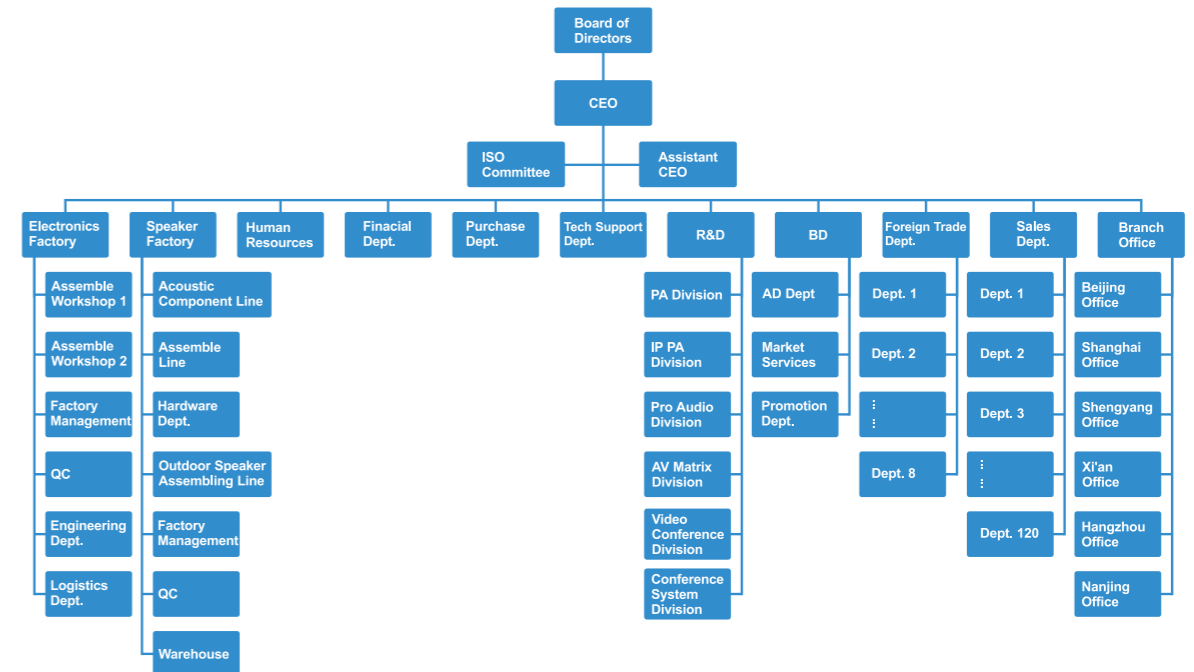
BUILD A WORLD-CLASS BRAND



Company Introduction

Guangdong Baolun Electronics Co., LTD. (ITC) was established in 1993, located in Panyu district of Guangzhou. ITC is the No.1 and the largest integrated supplier of audiovisual & lighting systems, integrating R&D, production, sales and service together in China for more than 31 years. ITC owns 4 office buildings, 6 R&D centers and 5 factories. There is also an industry-leading intelligent manufacturing industrial park of over 300,000 square meters under construction, which is expected to be put into operation by the end of 2023. We have 1200 R&D engineers, 2000 pre-sales and after-sales technicians, 142 sales departments, all totally more than 6000 employees. ITC can provide integrated solution from PA system, IP intercom system, Voice evacuation system, HD video conference system, 5G digital conference, Paperless conference, Interpretation system, Central control system, Professional sound system, LED screen, Stage light & Architectural light, etc. We are the official supplier for important events, including 2008 Beijing Olympic Games, 2010 Shanghai World Expo, 2010 Guangzhou Asian Games, 2016 Hangzhou G20 Summit, 2016 Turkey expo, 2022 Beijing Winter Olympics, India subway, USA chain shops, Guyana national conference, Uzbekistan national defense conference, Five Nigeria national airport, CBE Ethiopia bankOur worldwide successful projects are more than 1.5 million cases, and its products have been exported to more than 100 countries around the world. All of our products are developed and manufactured by ourselves. Our products are compliant with CE, RoHS, EN54, UL, CCC, NOM certificate. ITC possesses more than 3000 intellectual properties, including appearance patents, software copyrights, utility model patents and invention patents, and has won the honorary titles of "Quality Product", "Famous Brand" and "Most Competitive Brand" for many years. ITC is the "High-tech Enterprise" in China.

Company Organization



Our Production Lines

A group of highest technology equipment are used to strengthen the reliability and output capacity: SMT machine, reflow oven & numerical control cutting machine. 95% PCB of the equipment s are made by SMT machine to ensure quality consistency and higher reliability. The numerical cutting machines enhance the equipment in elaborate & elegant level. A comprehensive process of tests are be involved: drop test, vibration test, aging, Hipot & RoHS test.

Certificates:

CCC, ISO9001, CE & RoHS, IEC60914. Parts of our product are complied with certificates: CB, SASO, ETL, UL, FCC, EN54-16 and EN54-24. Parts of loudspeakers are certified by waterproof, dustproof, fire-proof & explosion-proof.



System Controller

Embedded software: audio integrated management system embedded software V5.73

TX-8700



Description

The core controller of the digital audio integrated management system supports system management through the PC client. It supports system management functions such as device management, task management, media library management, and account management, as well as powerful audio processing and audio routing distribution functions.

Feature

- * Adopt a 2.2-inch LCD display to display the status of the controller and IP information in real time.
- * Use 6-core 1.8GHz core processor, 2G memory, 128GB storage space, based on Linux system, high stability.
- * Based on the 3-layer network transmission technology, support lossless audio transmission, and support the transmission of lossless audio through the network to the terminal for playback.
- * Support stereo audio files, support left and right channel independent decoding, realize stereo audio playback;
- * Support text-to-speech broadcasting function to realize voice broadcasting of manuscripts such as temporary notifications and information releases.
- * Support the dual-system hot backup function, the spare machine detects the operation of the master in real time, and when the master is abnormal, the spare will automatically take over the system to ensure the stable operation of the system.
- * Support PC management software for device management, electronic map, task management, music library management, system settings and other system management operations.
- * The permission management function supports custom user roles, and establishes different role accounts according to the terminal, task, operation permission and so on, to achieve system multi-account permission management.
- * Support media library management, support WAV, MP3 audio file formats, support PC management software for music upload, music transfer, music deletion and other operations;
- * Built-in GPS high-precision satellite timing, no need to configure additional timing equipment, to achieve millisecond-level clock timing.
- * Built-in 4G communication function interface can extend 4G information push and 4G remote control functions.
- * Support float parade control, the system controller can be set as the float controller; it can trigger the speaker to play the float music through satellite positioning, and can also be remotely controlled through the tablet software.
- * Support Android and iOS tablet client control, support the playback control of timed, AOD tasks and float parade through the tablet, support viewing maps, devices, and other system information status.
- * Support 8 channels of analog audio input interfaces, support the acquisition of third-party audio source, support 8-channel simultaneous acquisition without mutual interference, and the transmission of audio to the designated terminal for playback through the network.
- * Support 8 channels of analog audio output interfaces, support 8 channels of network audio decoding outputs at the same time, each output supports digital mixing function, and the output volume is adjustable.
- * Support 16 channels of GPIO inputs, support custom GPIO port and fire alarm linkage triggering alarm sounds, and support triggering on-demand background music through GPIO, and up to 16 channels triggering on-demand music simultaneously.
- * Support 16 GPIO output ports for cascading trigger output, which can be connected with third-party devices.
- * Support 1 Gigabit Ethernet interface for system network audio transmission and data communication.
- * Support 1 RS232 interface, which can be connected with third-party devices.

Specification

Model	TX-8700
Network Interface	Standard RJ45
Transmission Rate	1000Mbps
Communication Protocol	DHCP, TCP, UDP, ICMP, IGMP, ARP and other standard network protocols
Audio Format	MP3, WAV
Audio Sampling Rate	48kHz
Audio Bit Depth	16 bits
Screen	2.2-inch LCD screen
Screen Resolution	320*240 pixels
Rated Input	775mVrms, balanced input
Rated Output	1Vrms, balanced output
Frequency Response	20Hz~20kHz, +0.2dB/-0.7dB
SNR	≥80dB(A)
Channel Isolation	≥95dB, @1kHz
THD	≤0.05%
Output Impedance (Balanced)	470Ω
Power Consumption	<50W
Power Voltage	DC24V
Working Temperature	-10℃~+55℃
Working Humidity	20%~80% relative humidity, no condensation
Weight	About 3kg
Dimension	440*295*51.9mm

System Controller

Embedded software: audio integrated management system embedded software V5.73

TX-8700B



Description

The core controller of the digital audio integrated management system supports system management through the PC client. It supports system management functions such as device management, task management, media library management, and account management, as well as powerful audio processing and audio routing distribution functions.

Feature

- * Adopt a 2.2-inch LCD display to display the status of the controller and IP information in real time.
- * Use 6-core 1.8GHz core processor, 2G memory, 128GB storage space, based on Linux system, high stability.
- * Based on the 3-layer network transmission technology, support lossless audio transmission, and support the transmission of lossless audio through the network to the terminal for playback.
- * Support stereo audio files, support left and right channel independent decoding, realize stereo audio playback;
- * Support text-to-speech broadcasting function to realize voice broadcasting of manuscripts such as temporary notifications and information releases.
- * Support the dual-system hot backup function, the spare machine detects the operation of the master in real time, and when the master is abnormal, the spare will automatically take over the system to ensure the stable operation of the system.
- * Support PC management software for device management, electronic map, task management, music library management, system settings and other system management operations.
- * The permission management function supports custom user roles, and establishes different role accounts according to the terminal, task, operation permission and so on, to achieve system multi-account permission management.
- * Support media library management, support WAV, MP3 audio file formats, support PC management software for music upload, music transfer, music deletion and other operations;
- * Built-in GPS high-precision satellite timing, no need to configure additional timing equipment, to achieve millisecond-level clock timing.
- * Support 8 channels of analog audio input interfaces, support the acquisition of third-party audio source, support 8-channel simultaneous acquisition without mutual interference, and the transmission of audio to the designated terminal for playback through the network.
- * Support 8 channels of analog audio output interfaces, support 8 channels of network audio decoding outputs at the same time, each output supports digital mixing function, and the output volume is adjustable.
- * Support 16 channels of GPIO inputs, support custom GPIO port and fire alarm linkage triggering alarm sounds, and support triggering on-demand background music through GPIO, and up to 16 channels triggering on-demand music simultaneously.
- * Support 16 GPIO output ports for cascading trigger output, which can be connected with third-party devices.
- * Support two independent Gigabit Ethernet interfaces to realize seamless backup switching of dual networks.
- * Support 1 RS232 interface, which can be connected with third-party devices.

Specification

Model	TX-8700B
Network Interface	Standard RJ45
Transmission Rate	1000Mbps
Communication Protocol	DHCP, TCP, UDP, ICMP, IGMP, ARP and other standard network protocols
Audio Format	MP3, WAV
Audio Sampling Rate	48kHz
Audio Bit Depth	16 bits
Screen	2.2-inch LCD screen
Screen Resolution	320*240 pixels
Line Input Sensitivity	0dBu, balanced input
Line Out Sensitivity	2.2dBu, balanced output
Frequency Response	20Hz~20kHz, +0.2dB/-0.7dB
SNR	≥77dB(A)
Channel Isolation	≥95dB, @1kHz
THD	≤0.05%, @1kHz, 0dBu
Output Impedance (Balanced)	470Ω
Power Consumption	<50W
Power Voltage	DC24V
Working Temperature	-10℃~+55℃
Working Humidity	20%~80% relative humidity, no condensation
Dimension	440*295*52mm
Weight	About 3kg

Audio Ecological Platform Android Control Software V7.39
TX-8700PA



Feature

- * On-demand tasks: Display all the on-demand tasks within the authority of the logged-in user. Click the task to view the task details.
- * Today's tasks: Display all today's tasks within the authority of the logged-in user. Click the task to view the details of today's tasks.
- * Session status: Display all ongoing session tasks within the authority of the logged-in user, and can control them. Task types include on-demand tasks, timed tasks, intercom, collection, text broadcasting, paging, alarm, etc.
- * Task control: support the control of playing audio, set the playback order, switch to previous or next program, start or stop, and adjust the volume; you can view the playlist, delete the audio of the playlist, view the online status of the execution terminal, control tasks, start and stop tasks.
- * Device module: Display the device status within the authority of the user in the system, such as online, offline, playing, failure, IP conflict, etc.
- * Real scene module: Display the real scene map and the equipment status on the map, such as equipment normal, equipment failure, fire alarm status, and the number of equipment on the current map.
- * Parade module: can play different parade programs, support parade control, float control, roadside control, etc.
- * Media library module: display playlist, can add and upload music, media library player can directly play the music of the playlist, can set the play order, switch to previous or next music, and set the playback volume.
- * My: On the "My" page, you can view the basic information, controller status information and software version number of the logged-in user.
- * Use environment: Android 7.0 version and above.

Audio Ecological Platform iOS Control Software V7.38
TX-8700PI



Feature

- * On-demand tasks: Display all the on-demand tasks within the authority of the logged-in user. Click the task to view the task details.
- * Today's tasks: Display all today's tasks within the authority of the logged-in user. Click the task to view the details of today's tasks.
- * Session status: Display all ongoing session tasks within the authority of the logged-in user, and can control them. Task types include on-demand tasks, timed tasks, intercom, collection, text broadcasting, paging, alarm, etc.
- * Task control: support the control of playing audio, set the playback order, switch to previous or next program, start or stop, and adjust the volume; you can view the playlist, delete the audio of the playlist, view the online status of the execution terminal, control tasks, start and stop tasks.
- * Device module: Display the device status within the authority of the user in the system, such as online, offline, playing, failure, IP conflict, etc.
- * Real scene module: Display the real scene map and the equipment status on the map, such as equipment normal, equipment failure, fire alarm status, and the number of equipment on the current map.
- * Parade module: can play different parade programs, support parade control, float control, roadside control, etc.
- * Media library module: display playlist, can add and upload music, media library player can directly play the music of the playlist, can set the play order, switch to previous or next music, and set the playback volume.
- * My: On the "My" page, you can view the basic information, controller status information and software version number of the logged-in user.
- * Use environment: iOS system 13.0 version and above.

Audio Ecological Platform Android Management and Control Software V7.39
TX-8700SA



Description

The digital broadcasting APP is a mobile application system applied to tourist attractions, park campuses, commercial and supermarket buildings, and professional sound reinforcement services. The system integrates high-fidelity broadcast management, flexible task switching, equipment monitoring, music station on demand, information push and other functional modules. From sound source acquisition, audio transmission technology, professional digital power amplifier, to HIFI-level speakers, build a comprehensive set of high-quality audio solutions to provide high-fidelity sound quality, reliable and practical professional sound reinforcement system.

Feature

- * Support remote monitoring and management of all equipment and operation functions of the cultural tourism system.
- * Support password login, mobile phone number login and automatic login after remembering the password, support functions of inputting primary and secondary IPs and switching primary and secondary Ips.
- * Support the creation of single-break scheduled tasks, scheduled broadcast tasks, on-demand tasks and alarm tasks; support today's task play history list and task filter list display; tasks can be edited and deleted, and convenient attributes such as priority and holidays can be added.
- * Support ongoing tasks switching tracks, switching playback modes, adjusting volume, playing and pausing operations.
- * Support uploading local music from the mobile phone to the media library, and remotely push the music from the media library to the host for playback.
- * Support the display of basic information of the device, including device status, IP address, MAC address, call code, device type, volume; and support device failure reminder function.
- * Support user-defined layout of functions: Check and display APP function modules according to requirements, and the function modules can be sorted and displayed.
- * Support current user personal information viewing; support to view the current version information of the software.
- * The software supports running on mobile phones with Android system version 7.0 or higher.

Audio Ecological Platform iOS Management and Control Software V7.38
TX-8700SI



Description

The digital broadcasting APP is a mobile application system applied to tourist attractions, park campuses, commercial and supermarket buildings, and professional sound reinforcement services. The system integrates high-fidelity broadcast management, flexible task switching, equipment monitoring, music station on demand, information push and other functional modules. From sound source acquisition, audio transmission technology, professional digital power amplifier, to HIFI-level speakers, build a comprehensive set of high-quality audio solutions to provide high-fidelity sound quality, reliable and practical professional sound reinforcement system.

Feature

- * Support remote monitoring and management of all equipment and operation functions of the cultural tourism system.
- * Support password login, mobile phone number login and automatic login after remembering the password, support functions of inputting primary and secondary IPs and switching primary and secondary Ips.
- * Support the creation of single-break scheduled tasks, scheduled broadcast tasks, on-demand tasks and alarm tasks; support today's task play history list and task filter list display; tasks can be edited and deleted, and convenient attributes such as priority and holidays can be added.
- * Support ongoing tasks switching tracks, switching playback modes, adjusting volume, playing and pausing operations.
- * Support uploading local music from the mobile phone to the media library, and remotely push the music from the media library to the host for playback.
- * Support the display of basic information of the device, including device status, IP address, MAC address, call code, device type, volume; and support device failure reminder function.
- * Support user-defined layout of functions: Check and display APP function modules according to requirements, and the function modules can be sorted and displayed.
- * Support current user personal information viewing; support to view the current version information of the software.
- * The software supports running on mobile phones with IOS system version 13.0 or higher.

Audio Integrated Management Software V6.17 TX-8700R



Feature

- * Client management software based on Windows operating system, through which to perform system management functions such as device management, task management, music library management, user authority management, log management, and system setting.
- * Support the front page shortcut operation session status, on-demand tasks, today's tasks, media library on-demand and real-time viewing of device status, providing a convenient and fast operating experience.
- * Support equipment management to manage all terminal status, including controller, power amplifier, decoding terminal, network microphone and other equipment, support real-time display of audio terminal IP address, online status, task status, volume and other operating status; support equipment partition management function, perform classified management, re-division of equipment partitions without rewiring, realizing flexible partition management.
- * Support system data exhibition board to display the total number of system equipment, online rate, task completion rate of the day, equipment utilization rate, task quantity monitoring and controller status in real time.
- * Support the management of media library resources, provide timing broadcast and on-demand broadcast media services for all audio terminals, and respond to playback requests from various terminals. The media library supports file batch upload, clone, and delete operations.
- * Support creation of multi-level electronic maps, and open map real-time monitor permissions according to needs. Support the association of custom terminal locations with electronic maps, which can be marked in groups or individual devices on the map; support real-time viewing of the system terminal status, when finding system equipment abnormalities or alarm conditions, it can be dealt with in time to ensure the normal operation of the system.
- * Support timing playback of background music, support selection of built-in music files or analog input as audio sources, support WAV lossless format file playback, realize unattended timing, fixed-point, fixed-track program playback, and support up to 256 channels of music playback at the same time without interference.
- * Support scheduled broadcast to open holiday mode, and scheduled tasks will not be automatically activated during the period.
- * Support the switching of today's tasks, and can flexibly adjust the day's tasks according to the actual situation.
- * Support microphone broadcast intercom function, support paging broadcast to zone, multi-zone, and whole area, support custom shortcut keys or dialing broadcast or intercom, which is convenient for administrators to call or intercom in emergency.
- * Support broadcast dodge function, the current background music volume can be automatically reduced during paging broadcast, and be automatically restored after paging.
- * Support wireless sound reinforcement broadcast through wireless microphones, to meet the needs of wireless sound reinforcement for temporary announcements, missing persons notices or temporary activities.
- * Support trigger on-demand function, trigger the short-circuit interface or software on-demand shortcut keys to play recorded audio files on demand such as notes, notifications, and prompts, support setting the number of repeated playbacks.
- * Support audio acquisition function, 48Khz sampling rate, support simultaneous collection of multiple third-party audio source devices, and transmit them to the designated decoding terminal for playback through network.
- * Support digital sound mixing function, support mixing of microphone broadcast voice and network background music, meet conventional microphone mixing and sound reinforcement applications, and flexibly set the background music mixing volume.
- * Support one-key help function. When visitors encounter danger or difficulty outdoors, they can use the intercom button on the panel to initiate an intercom request with one key, and the duty room attendant can respond quickly as soon as possible.
- * Support text-to-speech broadcast function to realize voice broadcast of manuscripts such as temporary notifications and information releases, support background adjustment of speech speed, and select voice package functions.
- * Support fire fighting linkage function, connect with voice alarm evacuation system through the short-circuit trigger interface, realize fire linkage alarm broadcast, and support PC management software to view the alarm status in real time.
- * Support hot standby function. The slave detects the operation status of controller in real time, and when the controller is abnormal, the slave automatically takes over the system to ensure the stable operation of the system.
- * Support system authority management function, customize user roles, support the establishment of different user authority accounts according to terminals, tasks, and functional modules, to realize system authority account management.
- * Support data backup, back up the controller data to the computer, and support remote firmware upgrade of the terminal through background software.
- * Support log management, log system operation, user operations, task status, and device status, and set log retention time separately.
- * Support system name and logo information customization.

Audio Integrated Management Software V6.17 TX-8700U



Feature

- * Client management software based on Windows operating system, through which to perform system management functions such as device management, task management, music library management, user authority management, log management, and system setting.
- * Support equipment management to manage all terminal status, including controller, power amplifier, decoding terminal, network microphone and other equipment, support real-time display of audio terminal IP address, online status, task status, volume and other operating status; support equipment partition management function, perform classified management, re-division of equipment partitions without rewiring, realizing flexible partition management.
- * Support system data exhibition board to display the total number of system equipment, online rate, task completion rate of the day, equipment utilization rate, task quantity monitoring and controller status in real time.
- * Support parade monitoring, including monitoring and management of parade tasks, roadside speakers, parade floats, volume adjustment, playback sequence, etc., and support the gradual and gradual exit of audio tasks to improve the audience experience.
- * Support positioning equipment management, can add, modify and delete positioning engine, positioning base station, and positioning tags; based on UWB positioning technology, the positioning accuracy can reach 30 cm.
- * Support the management of media library resources, provide timing broadcast and on-demand broadcast media services for all audio terminals, and respond to playback requests from various terminals. The media library supports file batch upload, clone, and delete operations.
- * Support creation of multi-level electronic maps, and open map real-time monitor permissions according to needs. Support the association of custom terminal locations with electronic maps, which can be marked in groups or individual devices on the map; support real-time viewing of the system terminal status, when finding system equipment abnormalities or alarm conditions, it can be dealt with in time to ensure the normal operation of the system.
- * Support timing playback of background music, support selection of built-in music files or analog input as audio sources, support WAV lossless format file playback, realize unattended timing, fixed-point, fixed-track program playback, and support up to 256 channels of music playback at the same time without interference.
- * Support microphone broadcast intercom function, support paging broadcast to zone, multi-zone, and whole area, support custom shortcut keys or dialing broadcast or intercom, which is convenient for administrators to call or intercom in emergency.
- * Support broadcast dodge function, the current background music volume can be automatically reduced during paging broadcast, and be automatically restored after paging.
- * Support wireless sound reinforcement broadcast through wireless microphones, to meet the needs of wireless sound reinforcement for temporary announcements, missing persons notices or temporary activities.
- * Support trigger on-demand function, trigger the short-circuit interface or software on-demand shortcut keys to play recorded audio files on demand such as notes, notifications, and prompts, support setting the number of repeated playbacks.
- * Support audio acquisition function, 48Khz sampling rate, support simultaneous collection of multiple third-party audio source devices, and transmit them to the designated decoding terminal for playback through network.
- * Support digital sound mixing function, support mixing of microphone broadcast voice and network background music, meet conventional microphone mixing and sound reinforcement applications, and flexibly set the background music mixing volume.
- * Support one-key help function. When visitors encounter danger or difficulty outdoors, they can use the intercom button on the panel to initiate an intercom request with one key, and the duty room attendant can respond quickly as soon as possible.
- * Support text-to-speech broadcast function to realize voice broadcast of manuscripts such as temporary notifications and information releases, support background adjustment of speech speed, and select voice package functions.
- * Support fire fighting linkage function, connect with voice alarm evacuation system through the short-circuit trigger interface, realize fire linkage alarm broadcast, and support PC management software to view the alarm status in real time.
- * Support hot standby function. The slave detects the operation status of controller in real time, and when the controller is abnormal, the slave automatically takes over the system to ensure the stable operation of the system.
- * Support system authority management function, customize user roles, support the establishment of different user authority accounts according to terminals, tasks, and functional modules, to realize system authority account management.
- * Support data backup, back up the controller data to the computer, and support remote firmware upgrade of the terminal through background software.
- * Support log management, log system operation, user operations, task status, and device status, and set log retention time separately.
- * Support system name and logo information customization.

Intercom Microphone

Embedded software: high-quality intercom microphone embedded software V5.74

TX-8702



Description

The professional desktop network intercom microphone can perform one-way talk to various terminals in the system network (point-to-point, zone or whole area), and supports two-way intercom. It is suitable for various call centers, alarm centers, meeting rooms, amusement parks and other places.

Feature

- * 5.0 inch high-definition touch screen, graphical operation interface, clear display, sensitive touch, and adjustable display brightness.
- * Based on 3-layer network transmission technology, compatible with standard network protocols, and support 48Khz/16-bit network audio transmission across the network.
- * Super directional microphone supports 48kHz sampling rate to ensure high-quality calls.
- * Support paging broadcast function for any zone, multi zone and whole zone, and the paging delay is less than 5ms.
- * Support two-way intercom function, support intercom ringtones, lights, texts and other prompts, support display of multiple current request queues, and support choosing to answer specified requests.
- * Support echo cancellation function, automatically eliminates network echo, full-duplex call, clear voice without stutter.
- * Support custom 10 shortcut keys to realize one-key request; support numeric keyboard dial to quickly initiate paging/intercom.
- * Support PC management software for microphone IP configuration, session strategy configuration and session task management.
- * Support broadcast dodge function, automatically reduce the current background music volume during paging broadcast, and automatically restore the background music volume after paging.
- * With password login permission. Customize the lock screen time, automatically lock the screen when leaving, and the password is required to log in.
- * Built-in high-fidelity speakers, with clear and loud sound, and adjustable volume.
- * Support low power consumption mode, automatically enter sleep, low power consumption and power saving state when there is no operation.
- * Support remote firmware upgrade, firmware upgrade can be carried out through LAN without disassembling the machine, reducing the work intensity of maintenance personnel.

Specification

Model	TX-8702
Network Interface	Standard RJ45
Transmission Rate	100Mbps
Support Protocol	DHCP, TCP, UDP, ICMP, IGMP, ARP and other standard network protocols
Audio Format	MP3, WAV
Audio Sampling Rate	48kHz
Audio Bit Depth	16 bits
Display Size	5 inches
Screen Resolution	480*854 pixels
Touch Type	Capacitive touch
MIC Sensitivity	Gooseneck microphone rod: -34±2dB(0dB=1V/Pa,@1kHz)
Microphone Type	Cardioid directional capacitive electret
Built-in Speaker Impedance and rated power	4Ω, 1.5W
AUX Rated Input	Single-end input +350mVrms
AUX Rated Output	Single-end output 1000±50mv
THD	≤0.3%
Frequency Response	80Hz~16kHz, +1/-3dB
SNR	≥80dB(A)
Working Temperature	-10℃~+55℃
Working Humidity	20%~80% relative humidity, no condensation
Power Consumption	≤12W
Operating Voltage	DC 24V
Size	180*140*65mm
Microphone Rod Length	409mm
Net Weight	About 1.2kg

Intercom Microphone

Embedded software: high-quality intercom microphone embedded software V5.74

TX-8702B



Description

The professional desktop network intercom microphone can perform one-way talk to various terminals in the system network (point-to-point, zone or whole area), and supports two-way intercom. It is suitable for various call centers, alarm centers, meeting rooms, amusement parks and other places.

Feature

- * 5.0 inch high-definition touch screen, graphical operation interface, clear display, sensitive touch, and adjustable display brightness.
- * Based on 3-layer network transmission technology, compatible with standard network protocols, and support 48Khz/16-bit network audio transmission across the network.
- * Super directional microphone supports 48kHz sampling rate to ensure high-quality calls.
- * Support paging broadcast function for any zone, multi zone and whole zone, and the paging delay is less than 5ms.
- * Support two-way intercom function, support intercom ringtones, lights, texts and other prompts, support display of multiple current request queues, and support choosing to answer specified requests.
- * Support echo cancellation function, automatically eliminates network echo, full-duplex call, clear voice without stutter.
- * Support custom 10 shortcut keys to realize one-key request; support numeric keyboard dial to quickly initiate paging/intercom.
- * Support PC management software for microphone IP configuration, session strategy configuration and session task management.
- * Support broadcast dodge function, automatically reduce the current background music volume during paging broadcast, and automatically restore the background music volume after paging.
- * With password login permission. Customize the lock screen time, automatically lock the screen when leaving, and the password is required to log in.
- * Built-in high-fidelity speakers, with clear and loud sound, and adjustable volume.
- * Support low power consumption mode, automatically enter sleep, low power consumption and power saving state when there is no operation.
- * Support remote firmware upgrade, firmware upgrade can be carried out through LAN without disassembling the machine, reducing the work intensity of maintenance personnel.
- * Support dual network port backup function.

Specification

Model	TX-8702B
Network Interface	Standard RJ45
Transmission Rate	100Mbps
Support Protocol	DHCP, TCP, UDP, ICMP, IGMP, ARP and other standard network protocols
Audio Format	MP3, WAV
Audio Sampling Rate	48kHz
Audio Bit Depth	16 bits
Display Size	5 inches
Screen Resolution	480*854 pixels
Touch Type	Capacitive touch
MIC Sensitivity	Gooseneck microphone rod: -34±2dB(0dB=1V/Pa,@1kHz)
Microphone Type	Cardioid directional capacitive electret
Built-in Speaker Impedance and rated power	4Ω, 1.5W
AUX Rated Input	Single-end input +350mVrms
AUX Rated Output	Single-end output 1000±50mv
THD	≤0.3%
Frequency Response	80Hz~16kHz, +1/-3dB
SNR	≥80dB(A)
Working Temperature	-10℃~+55℃
Working Humidity	20%~80% relative humidity, no condensation
Power Consumption	≤12W
Operating Voltage	DC 24V
Size	180*140*65mm
Microphone Rod Length	409mm
Net Weight	About 1.2kg

Intercom Terminal

Embedded software: high-quality intercom microphone embedded software V5.74

TX-8703



Feature

- * Rectangular embedded design, simple appearance, exquisite craftsmanship, sturdiness and durability.
- * Support one-key help function, initiate intercom request to the duty room.
- * Support two-way intercom function, built-in echo cancellation algorithm, automatically eliminate network echo, full-duplex call, clear voice without stutter.
- * Based on 3-layer network transmission technology, compatible with standard network protocols such as DHCP, TCP, UDP, ICMP, IGMP, and ARP.
- * Support one short-circuit input interface, which can be used to trigger on-demand tasks; support one short-circuit output interface (hardware reserved).
- * Support anti-disassembly alarm function, illegal disassembly of the shell will be automatically reported to the service center for alarm.
- * Built-in 3W full-range monitor speakers (with bass vibrating cavity), and the sound is clear and loud.
- * Support POE (IEEE 802.3af/at) power supply mode and DC12V/1.5A power supply.
- * Support embedded installation and surface installation, support IP55 dustproof and waterproof, suitable for indoor and outdoor environment installation.
- * Support remote firmware upgrade, firmware upgrade can be carried out through LAN without disassembling the machine, reducing maintenance personnel work. DC power supply interface can be connected to external adapter.

Specification

Model	TX-8703
Network Interface	Standard RJ45
Transmission Rate	100Mbps
Support Protocol	DHCP, TCP, UDP, ICMP, IGMP, ARP and other standard network protocols
Audio Format	MP3, WAV
Audio Sampling Rate	48kHz
Audio Bit Depth	16 bits
Protection Level	IP55
Working Temperature	-20℃~+60℃
Working Humidity	20%~85% relative humidity, no condensation
Operating Voltage	DC12V/1.5A or POE power supply
Overall Power Consumption	≤12W
Size	172×86×65mm
Weight	1kg

Intercom Terminal

Embedded software: high-quality intercom microphone embedded software V5.74

TX-8703E



Description

Professional network intercom terminal, professional dust-proof design; can initiate an intercom call to the management center with one key, which can meet the needs of emergency one-key help applications.

Feature

- * Rectangular embedded design, simple appearance, exquisite craftsmanship, sturdiness and durability.
- * Support one-key help function, initiate intercom request to the duty room.
- * Support one-key broadcast paging, 5ms ultra-low broadcast delay, super real-time broadcast notification.
- * Support two-way intercom function, built-in echo cancellation algorithm, automatically eliminate network echo, full-duplex call, clear voice without stutter.
- * Based on 3-layer network transmission technology, compatible with standard network protocols such as DHCP, TCP, UDP, ICMP, IGMP, and ARP.
- * Support one short-circuit input interface, which can be used to trigger on-demand tasks; support one short-circuit output interface (hardware reserved).
- * Support anti-disassembly alarm function, illegal disassembly of the shell will be automatically reported to the service center for alarm.
- * Built-in 3W full-range monitor speakers (with bass vibrating cavity), and the sound is clear and loud.
- * Support embedded installation or surface installation, and the protection level is Ip55.
- * Support remote firmware upgrade, firmware upgrade can be carried out through LAN without disassembling the machine, reducing maintenance personnel work.

Specification

Model	TX-8703E
Network interface	Standard RJ45
Transmission rate	100Mbps
Support protocol	DHCP, TCP, UDP, ICMP, IGMP, ARP and other standard network protocols
Audio format	MP3, WAV
Audio sampling rate	48kHz
Audio bit depth	16 bits
THD	≤1%
Frequency response	317Hz~3.4kHz,+1dB/-3dB
SNR	≥68dB(A)
Protection level	IP55
Working temperature	-20℃~+60℃
Working humidity	20%~85% relative humidity, no condensation
Operating voltage	DC12V/1.5A
Overall power consumption	≤12W
Size	172×86×65mm
Weight	1kg

Four-channel Decoding Terminal

Embedded software: high-quality network terminal embedded software V5.76

TX-8704



Description

Installed in the weak current room or branch room of each broadcast management area, it can be connected to four power amplifiers, and is suitable for various conference venues, schools, smart buildings and other application scenarios that require broadcast services and network background music digital mixing.

Feature

- * Standard cabinet design, 1U height, high-grade wire-drawing aluminum alloy panel, exquisite craftsmanship.
- * Built-in professional network audio decoding chip to realize the function of playing radio and network music programs.
- * Based on 3-layer network transmission technology, compatible with standard network protocols such as DHCP, TCP, UDP, ICMP, IGMP, ARP, etc.
- * Adopt 48kHz sampling rate, support DSP sound effect processing, realize CD-level sound quality effect.
- * Support equipment management through PC client software, view system equipment information, equipment status in real time, and set equipment parameters (IP address, equipment name, etc.).
- * Support automatic IP acquisition, support DHCP dynamic and static IP configuration methods.
- * Support volume configuration through PC client software, support volume batch copy function, realize batch volume configuration of multiple devices.
- * Support full-service sound mixing function, support digital mixing of broadcast and network background music, meeting the sound mixing and reinforcement of various activities such as school sports meeting, community broadcast and background music mixing scenes.
- * Support 4-channel local audio balance input, one-to-one corresponding local output, expandable collection of local audio and network background music mixing.
- * Support 4-channel audio balance output, which can be connected to local power amplifier to realize reinforcement function; support to connect to external audio acquisition equipment to extend the audio in the system to other systems.
- * With 4 short-circuit outputs, support flexible custom functions, can trigger alarms, and realize linkage applications of third-party equipment and platforms such as fire protection and monitoring.
- * With 4 independent AC power output sockets and 1 public AC power output socket to connect external expansion power amplifiers and other equipment; with intelligent power management function.
- * Equipped with 1 RS485 interface, which can be expanded and connected with third-party equipment and platforms.
- * Support remote firmware upgrade, firmware upgrade can be carried out through LAN without disassembling the machine, reducing maintenance personnel work.

Specification

Model	TX-8704
Network Interface	Standard RJ45
Transmission Rate	100Mbps
Support Protocol	DHCP, TCP, UDP, ICMP, IGMP, ARP and other standard network protocols
Audio Format	MP3, WAV
Audio Sampling Rate	48kHz
Audio Bit Depth	16 bits
Input Sensitivity	Balanced input: 0dBu
Output Sensitivity	Balanced output: 2.2dBu
Frequency Response	20Hz~20kHz, +1dB/-1dB;
THD	≤0.1%
SNR	>80dB(A)
Overall Power Consumption	≤40W
Working Temperature	-10℃~+55℃
Working Humidity	20%~80% relative humidity, no condensation
Power Supply	187~240VAC, 47~63Hz
Size (L×W×H)	484mm×295mm×45mm
Weight	3.2kg

Wall-mounted Terminal

Embedded software: Digital IP network terminal embedded software V2.0

TX-8706



Description

Wall-mounted terminal of the cultural and travel system is suitable for various conference venues, schools, smart buildings and other application scenarios that require broadcast services and network background music digital mixing.

Feature

- * Aluminum housing,exquisite and elegant appearance, solid structure.
- * Built-in professional network audio decoding chip to realize the function of playing radio and network music programs.
- * Based on 3-layer network transmission technology, compatible with standard network protocols such as DHCP, TCP, UDP, ICMP, IGMP, ARP, etc.
- * Adopt 48kHz sampling rate, support DSP sound effect processing, realize CD-level sound quality effect.
- * Support equipment management through PC client software, view system equipment information, equipment status in real time, and set equipment parameters (IP address, equipment name, etc.).
- * Support automatic IP acquisition, support DHCP dynamic and static IP configuration methods.
- * Support volume configuration through PC client software, support volume batch copy function, realize batch volume configuration of multiple devices.
- * Support full-service sound mixing function, support digital mixing of broadcast and network background music, meeting the sound mixing and reinforcement of various activities such as school sports meeting, community broadcast and background music mixing scenes.
- * With 1 line input interface and 1 line output interface, which is suitable for on-site local reinforcement and broadcast function.
- * With 1 short-circuit output, support flexible custom functions, can trigger alarms, and realize linkage applications of third-party equipment and platforms such as fire protection and monitoring.
- * Built-in constant resistance power amplifier, with 2 power output ports, external to speakers, fine sound quality and strong power.
- * Priority function: 1) Network alarm has the highest priority; 2) Local line input has priority over network background music.
- * Network products, easy to expand, not restricted by geographic location, and easy to install without additional computer room management equipment.
- * Support remote firmware upgrade, firmware upgrade can be carried out through LAN without disassembling the machine, reducing maintenance personnel work.

Specification

Model	TX-8706
Network Interface	Standard RJ45
Transmission Rate	100Mbps
Support Protocol	DHCP, TCP, UDP, ICMP, IGMP, ARP and other standard network protocols
Audio Format	MP3, WAV
Audio Sampling Rate	48kHz
Audio Bit Depth	16 bits
LINE IN Input Sensitivity	0dBu
LINE OUT Output Sensitivity	2.2dBu
SPK OUT1/2 Output Power	2×10W (MAX), @8 ohms; 2×20W (MAX), @4 ohms
Frequency Response	Line: 20Hz~20kHz, +1dB/-1dB; SPK OUT: 80Hz~16kHz, +1dB/-3dB
THD	Line: ≤0.1%; SPK OUT: ≤1%
SNR	>75dB(A)
Overall Power Consumption	≤60W
Working Temperature	-10℃~+55℃
Working Humidity	20%~80% relative humidity, no condensation
Power Supply	DC24V
Size (L×W×H)	187mm×97mm×23mm
Weight	0.45kg

Audio Collector

Embedded software: ultra-low latency collector embedded software V5.71

TX-8770



Description

It is specially designed for external analog audio signal acquisition of cultural and tourism system. The analog audio can be captured and encoded into digital audio, and be transmitted to designated area terminal for playback via network.

Feature

- *Aluminum housing,exquisite and elegant appearance, solid structure.
- * Based on 3-layer network transmission technology, compatible with standard network protocols such as DHCP, TCP, UDP, ICMP, IGMP, ARP, etc.
- * Adopt 48kHz sampling rate and lossless collection, support the collection of mixer or third-party audio sources, to meet various audio source collection requirements.
- * Support equipment management through PC client software, view system equipment information, equipment status in real time, and set equipment parameters (IP address, equipment name, etc.).
- * Support automatic IP acquisition, support DHCP dynamic and static IP configuration methods.
- * Support the editing of acquisition and broadcast tasks through PC client software, and realize the playback of collected audio sources on designated network terminals.
- * Realize end-to-end transmission with extremely low latency (5ms), and support "zero" delay broadcast for any partition.
- * Equipped with 2 RCA lotus socket single-ended input ports and 2 Phoenix terminal balanced input ports, which can be configured as microphones with self-acquisition gain, and can be flexibly adapted to a variety of different audio equipment.
- * With 4 short-circuit inputs, support flexible custom functions, can realize short-circuit collection, alarm triggering, and linkage applications of third-party equipment and platforms such as fire protection and monitoring.
- * With 1 RS485 interface, support Modbus protocol, support flexible custom extension functions, and can be connected to third-party equipment and platforms.
- * Support remote firmware upgrade, firmware upgrade can be carried out through LAN without disassembling the machine, reducing maintenance personnel work.

Specification

Model	TX-8770
Network Interface	Standard RJ45
Transmission Rate	100Mbps
Support Protocol	DHCP, TCP, UDP, ICMP, IGMP, ARP and other standard network protocols
Rated Input	LINE IN1/IN2: Balanced input 0dBu; LINE IN3/IN4: Single-end input 0dBu
Frequency Response	20Hz~20kHz,+1dB/-1dB
SNR	≥80dB(A)
Channel Separation	≥95dB,@1kHz
THD	≤0.05%
Power Consumption	<20W
Operating Voltage	DC24V
Working Temperature	-10℃~+55℃
Working Humidity	20%~80% relative humidity, no condensation
Size (L×W×H)	187mm×97mm×23mm
Weight	0.45kg

Network Speaker

Embedded software: high-fidelity network speaker embedded software V5.77

TX-8707



Description

Professional integrated wall-mounted speaker design; built-in high-speed industrial-grade processing chip, integrated embedded PC technology and DSP audio processing technology, suitable for various conference venues, schools, smart buildings and other application scenarios that require broadcast, network background music and digital mixing application.

Feature

- * Professional integrated wall-mounted speaker design, elegant and beautiful, exquisite craftsmanship.
- * Built-in industrial-grade dedicated network audio decoding chip to realize the function of broadcast and network music program playback.
- * Based on 3-layer network transmission technology, compatible with standard network protocols such as DHCP, TCP, UDP, ICMP, IGMP, ARP, etc.
- * Adopt 48kHz sampling rate, support DSP sound effect processing, realize CD-level sound quality effect.
- * Support equipment management through PC client software, view system equipment information, equipment status in real time, and set equipment parameters (IP address, equipment name, etc.).
- * Support automatic IP acquisition, support DHCP dynamic and static IP configuration methods.
- * Support volume configuration through PC client software, support volume batch copy function, realize batch volume configuration of multiple devices.
- * Support full-service sound mixing function, support digital mixing of broadcast and network background music.
- * Support speaker failure detection function, support real-time viewing of speaker failure status through PC client.
- * Built-in electronic crossover, digital bass power amplifier is strong and efficient at low frequencies; treble power amplifier guarantees soft sound quality.
- * Network products, easy to expand, not restricted by geographic location, and easy to install without additional computer room management equipment.
- * Support remote firmware upgrade, firmware upgrade can be carried out through LAN without disassembling the machine, reducing maintenance personnel work.

Specification

Model	TX-8707
Output Power	Bass 2*20W, treble 2*2W
Network Interface	Standard RJ45 input
Transmission Rate	100Mbps
Support Protocol	DHCP, TCP, UDP, ICMP, IGMP, ARP and other standard network protocols
Audio Format	MP3, WAV
Audio Sampling Rate	48kHz
Audio Bit Depth	16 bits
Frequency Response	70Hz~20KHz (with the test curve of this machine)
THD	≤1%
SNR	>75dB(A)
Overall Power Consumption	≤60W
Circuit Protection	Overload, short circuit protection (bass)
Working Temperature	-10℃~+55℃
Working Humidity	20%~80% relative humidity, no condensation
Power Supply	~110V-240V 50Hz-60Hz
Size (L×W×H)	162*240*225mm (including net cover)
Weight	4.2kg

Network Speaker

Embedded software: high-fidelity network speaker embedded software V5.77

TX-8707-15



Main speaker

Second speaker

Description

It is suitable for various theme parks, conference venues, schools, smart buildings and other application scenarios that require broadcast, network background music and digital mixing application.

Feature

- * Professional integrated wall-mounted speaker design, elegant and beautiful, exquisite craftsmanship.
- * Built-in industrial-grade dedicated network audio decoding chip to realize the function of broadcast and network music program playback.
- * Based on 3-layer network transmission technology, compatible with standard network protocols such as DHCP, TCP, UDP, ICMP, IGMP, ARP, etc.
- * Adopt 48kHz sampling rate, support DSP sound effect processing, realize CD-level sound quality effect.
- * Support equipment management through PC client software, view system equipment information, equipment status in real time, and set equipment parameters (IP address, equipment name, etc.).
- * Support automatic IP acquisition, support DHCP dynamic and static IP configuration methods.
- * Support volume configuration through PC client software, support volume batch copy function, realize batch volume configuration of multiple devices.
- * Support mixing of microphone broadcast and network background music, and can flexibly set the background music mixing volume.
- * Support speaker failure detection function, support real-time viewing of speaker failure status through PC client.
- * Built-in electronic crossover, strong and powerful low frequency, soft sound quality and high efficiency.
- * Network products, easy to expand, not restricted by geographic location, and easy to install without additional computer room management equipment.
- * 1 channel analog balanced signal input, external volume adjustment, more selection for customers.
- * Support remote firmware upgrade, firmware upgrade can be carried out through LAN without disassembling the machine, reducing maintenance personnel work.

Specification

Model	TX-8707-15
Network Interface	Standard RJ45 input
Transmission Rate	100Mbps
Support Protocol	DHCP, TCP, UDP, ICMP, IGMP, ARP and other standard network protocols
Input Sensitivity	Balanced input 350mVrms
Output Power	Bass 2*15W, treble 2*1W
Overall Power Consumption	45W
Frequency Response	80Hz~16kHz
THD	≤1%
SNR	≥73dB (A)
Circuit Protection	Overload, short circuit protection
Working Temperature	-10℃~45℃
Working Humidity	20%~80% relative humidity, no condensation
Power Supply	~220V 50Hz
Dimension	175*175*240mm
Weight	6kg

Network Speaker

Embedded software: high-fidelity network speaker embedded software V5.77

TX-8707-30



Main speaker

Second speaker

Description

It is suitable for various theme parks, conference venues, schools, smart buildings and other application scenarios that require broadcast, network background music and digital mixing application.

Feature

- * Professional integrated wall-mounted speaker design, elegant and beautiful, exquisite craftsmanship.
- * Built-in industrial-grade dedicated network audio decoding chip to realize the function of broadcast and network music program playback.
- * Based on 3-layer network transmission technology, compatible with standard network protocols such as DHCP, TCP, UDP, ICMP, IGMP, ARP, etc.
- * Adopt 48kHz sampling rate, support DSP sound effect processing, realize CD-level sound quality effect.
- * Support equipment management through PC client software, view system equipment information, equipment status in real time, and set equipment parameters (IP address, equipment name, etc.).
- * Support automatic IP acquisition, support DHCP dynamic and static IP configuration methods.
- * Support volume configuration through PC client software, support volume batch copy function, realize batch volume configuration of multiple devices.
- * Support mixing of microphone broadcast and network background music, and can flexibly set the background music mixing volume.
- * Support speaker failure detection function, support real-time viewing of speaker failure status through PC client.
- * Built-in electronic crossover, strong and powerful low frequency, soft sound quality and high efficiency.
- * Network products, easy to expand, not restricted by geographic location, and easy to install without additional computer room management equipment.
- * 1 channel analog balanced signal input, external volume adjustment, more selection for customers.
- * Support remote firmware upgrade, firmware upgrade can be carried out through LAN without disassembling the machine, reducing maintenance personnel work.

Specification

Model	TX-8707-30
Network Interface	Standard RJ45 input
Transmission Rate	100Mbps
Support Protocol	DHCP, TCP, UDP, ICMP, IGMP, ARP and other standard network protocols
Input Sensitivity	Balanced input 350mVrms
Output Power	Bass 2*30W, treble 2*1W
Overall Power Consumption	85W
Frequency Response	80Hz~16kHz
THD	≤1%
SNR	≥73dB (A)
Circuit Protection	Overload, short circuit protection
Working Temperature	-10℃~45℃
Working Humidity	20%~80% relative humidity, no condensation
Power Supply	~220V 50Hz
Dimension	220*220*300mm
Weight	8.5kg

Power Amplifier

Embedded software: high-quality waterproof power amplifier embedded software V5.77

TX-87100



Description

Integrated digital power amplifier module and aluminum box design, aluminum alloy waterproof and rust-proof housing structure; installed in outdoor columns and underground installation slots in various broadcast management areas, used for broadcast and local programs playback in outdoor places such as parks, squares, streets, tourist attractions, etc..

Feature

- * Based on 3-layer network transmission technology, compatible with standard network protocols, and support 48KHz/16-bit network audio transmission across the network.
- * Support equipment management through PC client software, view system equipment information, equipment status in real time, and set equipment parameters (IP address, equipment name, etc.).
- * Built-in industrial-grade dedicated network audio decoding chip to realize the function of broadcast and network music program playback.
- * Support microphone broadcast voice and network background music mixing, and the background music mixing volume can be flexibly set.
- * Built-in Class D 2*100W (@4R) constant resistance digital power amplifier, low heat, high efficiency, CD-level perfect sound quality.
- * Support power amplifier short circuit, overload, overheating protection functions, and support real-time viewing of equipment failure status through PC client.
- * Built-in DSP audio processor, support 8-segment EQ adjustment, support the adjustment of EQ frequency, gain, bandwidth and type of the device.
- * Support high and low pass filter processing, adjust the high pass frequency, low pass frequency, type, Q value and number of segments.
- * Support digital limiter function to prevent distortion caused by excessive signal, affecting sound quality.
- * Support remote firmware upgrade, firmware upgrade can be carried out through LAN without disassembling the machine, reducing maintenance personnel work.
- * Using aluminum alloy die-casting molding, dust-proof and waterproof design, support IP66 protection level, anti-radio frequency interference, suitable for working in the environment of -30℃~60℃.

Specification

Model	TX-87100
Network Interface	Standard RJ45 network port
Transmission Rate	100Mbps
Support Protocol	DHCP, TCP, UDP, ICMP, IGMP, ARP and other standard network protocols
Audio Format	MP3, WAV
Audio Sampling Rate	48KHz
Audio Bit Depth	16 bits
Rated Power	100W*2
Overall Power Consumption	240W
Frequency Response	80Hz~16kHz,+1/-3dB
THD	≤1%
SNR	≥80dB(A)
Output Method	Constant resistance 4-16Ω output
Circuit Protection	DC output, overload, over temperature, short circuit protection circuit
Working Temperature	-30℃~60℃
Working Humidity	20%~80% relative humidity, no condensation
Input Power	~220V 50Hz
Size (L×W×H)	240*160*75mm
Weight	3kg

Power Amplifier

Embedded: high-quality waterproof power amplifier embedded software V5.77

TX-87100G



Description

Integrated digital power amplifier module and aluminum box design, aluminum alloy waterproof and rust-proof housing structure; installed in outdoor columns and underground installation slots in various broadcast management areas, used for broadcast and local programs playback in outdoor places such as parks, squares, streets, tourist attractions, etc..

Feature

- * Based on 3-layer network transmission technology, compatible with standard network protocols, and support 48KHz/16-bit network audio transmission across the network.
- * Support equipment management through PC client software, view system equipment information, equipment status in real time, and set equipment parameters (IP address, equipment name, etc.).
- * Built-in industrial-grade dedicated network audio decoding chip to realize the function of broadcast and network music program playback.
- * Support microphone broadcast voice and network background music mixing, and the background music mixing volume can be flexibly set.
- * Built-in Class D 2*100W (@4R) constant resistance digital power amplifier, low heat, high efficiency, CD-level perfect sound quality.
- * Support power amplifier short circuit, overload, overheating protection functions, and support real-time viewing of equipment failure status through PC client.
- * Built-in DSP audio processor, support 8-segment EQ adjustment, support the adjustment of EQ frequency, gain, bandwidth and type of the device.
- * Support high and low pass filter processing, adjust the high pass frequency, low pass frequency, type, Q value and number of segments.
- * Support digital limiter function to prevent distortion caused by excessive signal, affecting sound quality.
- * Support remote firmware upgrade, firmware upgrade can be carried out through LAN without disassembling the machine, reducing maintenance personnel work.
- * Using aluminum alloy die-casting molding, dust-proof and waterproof design, support IP66 protection level, anti-radio frequency interference, suitable for working in the environment of -30℃~60℃.

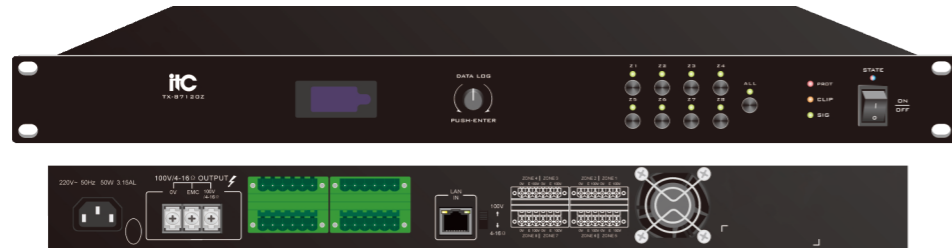
Specification

Model	TX-87100G
Network Interface	Standard RJ45 network port, standard SFP interface
Transmission Rate	100Mbps/1000Mbps
Support Protocol	DHCP, TCP, UDP, ICMP, IGMP, ARP and other standard network protocols
Audio Format	MP3, WAV
Audio Sampling Rate	48KHz
Audio Bit Depth	16 bits
Rated Power	100W*2
Overall Power Consumption	240W
Frequency Response	80Hz~16kHz,+1/-3dB
THD	≤1%
SNR	≥80dB(A)
Output Method	Constant resistance 4-16Ω output
Circuit Protection	DC output, overload, over temperature, short circuit protection circuit
Working Temperature	-30℃~60℃
Working Humidity	20%~80% relative humidity, no condensation
Input Power	~220V50Hz
Size (L×W×H)	240*160*75mm
Weight	3kg

Network Power Amplifier

Embedded software: high-quality professional power amplifier embedded software V5.75

TX-87120Z



Description

Installed in the weak current room or sub-control computer room of each broadcast management area, built-in high-fidelity power amplifier, used for program broadcast and local broadcast in halls, corridors, outdoors and other areas.

Feature

- * Standard cabinet design, 1U height, black aluminum oxide wire-drawing panel, exquisite craftsmanship.
- * Built-in industrial-grade dedicated network audio decoding chip to realize the function of broadcast and network music program playback.
- * Built-in high-fidelity professional digital power amplifier, support constant resistance 4~16Ω power output / constant voltage 100V output, and the mode can be switched.
- * With 8 power zone output ports, support 8 zone independent control, support any zone, whole zone to broadcast and play network music programs.
- * Based on 3-layer network transmission technology, compatible with standard network protocols such as DHCP, TCP, UDP, ICMP, IGMP, ARP, etc.
- * Adopt 48kHz sampling rate, support DSP sound effect processing, realize CD-level sound quality effect.
- * Support equipment management through software, remotely view system equipment information, equipment status in real time, and set equipment parameters (IP address, equipment name, etc.).
- * Support automatic IP acquisition, support DHCP dynamic and static IP configuration methods.
- * Support remote volume configuration through management software, support volume batch copy function, realize batch volume configuration of multiple devices.
- * Support remote adjustment of treble and bass through management software, and adjust according to application requirements for better sound quality.
- * Support power amplifier failure detection function, support power amplifier failure/overload/over temperature protection/short circuit protection detection function, support software to check whether the power amplifier is faulty.
- * Support the zone failure detection function in constant voltage mode, and the display screen can show whether there are faults in 8 zones.
- * Support full-service sound mixing function, support digital mixing of broadcast and network background music, meeting the sound mixing and reinforcement of various activities such as school sports meeting, community broadcast and background music mixing scenes.
- * Support three-wire sound control override, the power amplifier has a constant voltage 100V output in each area with three-wire sound control override output function, and no override power supply is required; it is compatible with four-wire fire fighting override, an external 24V override power supply is required.
- * Intelligent power saving and pre-open management, automatically turn off the power amplifier when idle, and automatically open when there is a signal, to achieve system energy saving and stable operation of the equipment.
- * With 8 shortcut keys to quickly turn on/off the corresponding zone by pressing the key; with multi-function encoder knob to perform operations such as volume adjustment, treble and bass adjustment.
- * Support remote firmware upgrade, firmware upgrade can be carried out through LAN without disassembling the machine, reducing maintenance personnel work.

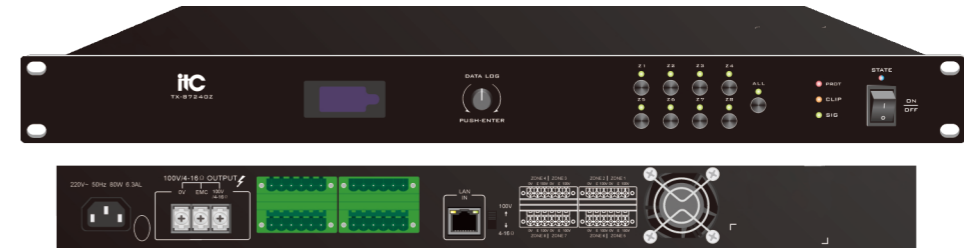
Specification

Model	TX-87120Z
Network Interface	Standard RJ45 network port
Transmission Rate	100Mbps
Support Protocol	DHCP, TCP, UDP, ICMP, IGMP, ARP and other standard network protocols
Audio Format	MP3, WAV
Audio Mode	16-bit CD sound quality
Sampling Rate	48kHz
Tweeter Boost and Attenuation	±10dB
Bass Boost and Attenuation	±10dB
Frequency Response	80Hz~16kHz +1/-3dB
THD	≤1%
SNR	≥75dB (A)
Output Power	120W
Output Method	Constant voltage 100V/constant resistance 4~16Ω
Power Consumption	160W
Standby Power Consumption	≤10W
Power Supply	~AC 180V-240V 50Hz
Circuit Protection	DC output, overload, over temperature, short circuit protection circuit
Working Temperature	-10℃~+55℃
Working Humidity	20%~80% relative humidity, no condensation
Size	484×315×44mm
Weight	4.5kg

Network Power Amplifier

Embedded software: high-quality professional power amplifier embedded software V5.75

TX-87240Z



Description

Installed in the weak current room or sub-control computer room of each broadcast management area, built-in high-fidelity power amplifier, used for program broadcast and local broadcast in halls, corridors, outdoors and other areas.

Feature

- * Standard cabinet design, 1U height, black aluminum oxide wire-drawing panel, exquisite craftsmanship.
- * Built-in industrial-grade dedicated network audio decoding chip to realize the function of broadcast and network music program playback.
- * Built-in high-fidelity professional digital power amplifier, support constant resistance 4~16Ω power output / constant voltage 100V output, and the mode can be switched.
- * With 8 power zone output ports, support 8 zone independent control, support any zone, whole zone to broadcast and play network music programs.
- * Based on 3-layer network transmission technology, compatible with standard network protocols such as DHCP, TCP, UDP, ICMP, IGMP, ARP, etc.
- * Adopt 48kHz sampling rate, support DSP sound effect processing, realize CD-level sound quality effect.
- * Support equipment management through software, remotely view system equipment information, equipment status in real time, and set equipment parameters (IP address, equipment name, etc.).
- * Support automatic IP acquisition, support DHCP dynamic and static IP configuration methods.
- * Support remote volume configuration through management software, support volume batch copy function, realize batch volume configuration of multiple devices.
- * Support remote adjustment of treble and bass through management software, and adjust according to application requirements for better sound quality.
- * Support power amplifier failure detection function, support power amplifier failure/overload/over temperature protection/short circuit protection detection function, support software to check whether the power amplifier is faulty.
- * Support the zone failure detection function in constant voltage mode, and the display screen can show whether there are faults in 8 zones.
- * Support full-service sound mixing function, support digital mixing of broadcast and network background music, meeting the sound mixing and reinforcement of various activities such as school sports meeting, community broadcast and background music mixing scenes.
- * Support three-wire sound control override, the power amplifier has a constant voltage 100V output in each area with three-wire sound control override output function, and no override power supply is required; it is compatible with four-wire fire fighting override, an external 24V override power supply is required.
- * Intelligent power saving and pre-open management, automatically turn off the power amplifier when idle, and automatically open when there is a signal, to achieve system energy saving and stable operation of the equipment.
- * With 8 shortcut keys to quickly turn on/off the corresponding zone by pressing the key; with multi-function encoder knob to perform operations such as volume adjustment, treble and bass adjustment.
- * Support remote firmware upgrade, firmware upgrade can be carried out through LAN without disassembling the machine, reducing maintenance personnel work.

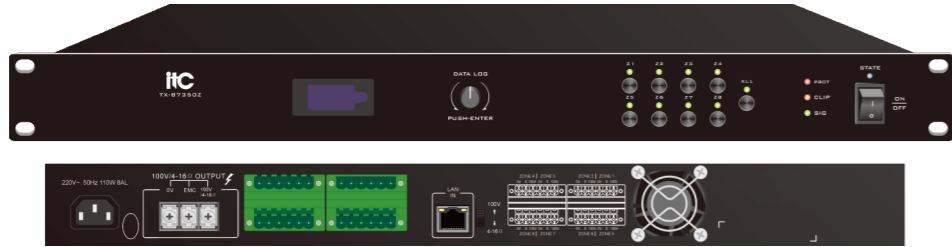
Specification

Model	TX-87240Z
Network Interface	Standard RJ45 network port
Transmission Rate	100Mbps
Support Protocol	DHCP, TCP, UDP, ICMP, IGMP, ARP and other standard network protocols
Audio Format	MP3, WAV
Audio Mode	16-bit CD sound quality
Sampling Rate	48kHz
Tweeter Boost and Attenuation	±10dB
Bass Boost and Attenuation	±10dB
Frequency Response	80Hz~16kHz +1/-3dB
THD	≤1%
SNR	≥75dB(A)
Output Power	240W
Output Method	Constant voltage 100V/constant resistance 4~16Ω
Power Consumption	300W
Standby Power Consumption	≤10W
Power Supply	~AC 180V-240V 50Hz
Circuit Protection	DC output, overload, over temperature, short circuit protection circuit
Working Temperature	-10℃~+55℃
Working Humidity	20%~80% relative humidity, no condensation
Size	484×315×44mm
Weight	5.1kg

Network Power Amplifier

Embedded software: high-quality professional power amplifier embedded software V5.75

TX-87350Z



Description

Installed in the weak current room or sub-control computer room of each broadcast management area, built-in high-fidelity power amplifier, used for program broadcast and local broadcast in halls, corridors, outdoors and other areas.

Feature

- * Standard cabinet design, 1U height, black aluminum oxide wire-drawing panel, exquisite craftsmanship.
- * Built-in industrial-grade dedicated network audio decoding chip to realize the function of broadcast and network music program playback.
- * Built-in high-fidelity professional digital power amplifier, support constant resistance 4~16Ω power output / constant voltage 100V output, and the mode can be switched.
- * With 8 power zone output ports, support 8 zone independent control, support any zone, whole zone to broadcast and play network music programs.
- * Based on 3-layer network transmission technology, compatible with standard network protocols such as DHCP, TCP, UDP, ICMP, IGMP, ARP, etc.
- * Adopt 48kHz sampling rate, support DSP sound effect processing, realize CD-level sound quality effect.
- * Support equipment management through software, remotely view system equipment information, equipment status in real time, and set equipment parameters (IP address, equipment name, etc.).
- * Support automatic IP acquisition, support DHCP dynamic and static IP configuration methods.
- * Support remote volume configuration through management software, support volume batch copy function, realize batch volume configuration of multiple devices.
- * Support remote adjustment of treble and bass through management software, and adjust according to application requirements for better sound quality.
- * Support power amplifier failure detection function, support power amplifier failure/overload/over temperature protection/short circuit protection detection function, support software to check whether the power amplifier is faulty.
- * Support the zone failure detection function in constant voltage mode, and the display screen can show whether there are faults in 8 zones.
- * Support full-service sound mixing function, support digital mixing of broadcast and network background music, meeting the sound mixing and reinforcement of various activities such as school sports meeting, community broadcast and background music mixing scenes.
- * Support three-wire sound control override, the power amplifier has a constant voltage 100V output in each area with three-wire sound control override output function, and no override power supply is required; it is compatible with four-wire fire fighting override, an external 24V override power supply is required.
- * Intelligent power saving and pre-open management, automatically turn off the power amplifier when idle, and automatically open when there is a signal, to achieve system energy saving and stable operation of the equipment.
- * With 8 shortcut keys to quickly turn on/off the corresponding zone by pressing the key; with multi-function encoder knob to perform operations such as volume adjustment, treble and bass adjustment.
- * Support remote firmware upgrade, firmware upgrade can be carried out through LAN without disassembling the machine, reducing maintenance personnel work.

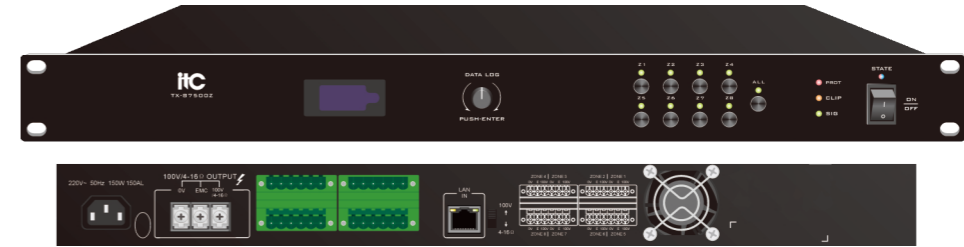
Specification

Model	TX-87350Z
Network Interface	Standard RJ45 network port
Transmission Rate	100Mbps
Support Protocol	DHCP, TCP, UDP, ICMP, IGMP, ARP and other standard network protocols
Audio Format	MP3, WAV
Audio Mode	16-bit CD sound quality
Sampling Rate	48kHz
Tweeter Boost and Attenuation	±10dB
Bass Boost and Attenuation	±10dB
Frequency Response	80Hz~16kHz +1/-3dB
THD	≤1%
SNR	≥75dB (A)
Output Power	350W
Output Method	Constant voltage 100V/constant resistance 4~16Ω
Power Consumption	500W
Standby Power Consumption	≤10W
Power Supply	~AC 180V-240V 50Hz
Circuit Protection	DC output, overload, over temperature, short circuit protection circuit
Working Temperature	-10℃~+55℃
Working Humidity	20%~80% relative humidity, no condensation
Size	484×315×44mm
Weight	5.4kg

Network Power Amplifier

Embedded software: high-quality professional power amplifier embedded software V5.75

TX-87500Z



Description

Installed in the weak current room or sub-control computer room of each broadcast management area, built-in high-fidelity power amplifier, used for program broadcast and local broadcast in halls, corridors, outdoors and other areas.

Feature

- * Standard cabinet design, 1U height, black aluminum oxide wire-drawing panel, exquisite craftsmanship.
- * Built-in industrial-grade dedicated network audio decoding chip to realize the function of broadcast and network music program playback.
- * Built-in high-fidelity professional digital power amplifier, support constant resistance 4~16Ω power output / constant voltage 100V output, and the mode can be switched.
- * With 8 power zone output ports, support 8 zone independent control, support any zone, whole zone to broadcast and play network music programs.
- * Based on 3-layer network transmission technology, compatible with standard network protocols such as DHCP, TCP, UDP, ICMP, IGMP, ARP, etc.
- * Adopt 48kHz sampling rate, support DSP sound effect processing, realize CD-level sound quality effect.
- * Support equipment management through software, remotely view system equipment information, equipment status in real time, and set equipment parameters (IP address, equipment name, etc.).
- * Support automatic IP acquisition, support DHCP dynamic and static IP configuration methods.
- * Support remote volume configuration through management software, support volume batch copy function, realize batch volume configuration of multiple devices.
- * Support remote adjustment of treble and bass through management software, and adjust according to application requirements for better sound quality.
- * Support power amplifier failure detection function, support power amplifier failure/overload/over temperature protection/short circuit protection detection function, support software to check whether the power amplifier is faulty.
- * Support the zone failure detection function in constant voltage mode, and the display screen can show whether there are faults in 8 zones.
- * Support full-service sound mixing function, support digital mixing of broadcast and network background music, meeting the sound mixing and reinforcement of various activities such as school sports meeting, community broadcast and background music mixing scenes.
- * Support three-wire sound control override, the power amplifier has a constant voltage 100V output in each area with three-wire sound control override output function, and no override power supply is required; it is compatible with four-wire fire fighting override, an external 24V override power supply is required.
- * Intelligent power saving and pre-open management, automatically turn off the power amplifier when idle, and automatically open when there is a signal, to achieve system energy saving and stable operation of the equipment.
- * With 8 shortcut keys to quickly turn on/off the corresponding zone by pressing the key; with multi-function encoder knob to perform operations such as volume adjustment, treble and bass adjustment.
- * Support remote firmware upgrade, firmware upgrade can be carried out through LAN without disassembling the machine, reducing maintenance personnel work.

Specification

Model	TX-87500Z
Network Interface	Standard RJ45 network port
Transmission Rate	100Mbps
Support Protocol	DHCP, TCP, UDP, ICMP, IGMP, ARP and other standard network protocols
Audio Format	MP3, WAV
Audio Mode	16-bit CD sound quality
Sampling Rate	48kHz
Tweeter Boost and Attenuation	±10dB
Bass Boost and Attenuation	±10dB
Frequency Response	80Hz~16kHz +1/-3dB
THD	≤1%
SNR	≥75dB (A)
Output Power	500W
Output Method	Constant voltage 100V/constant resistance 4~16Ω
Power Consumption	650W
Standby Power Consumption	≤10W
Power Supply	~AC 180V-240V 50Hz
Circuit Protection	DC output, overload, over temperature, short circuit protection circuit
Working Temperature	-10℃~+55℃
Working Humidity	20%~80% relative humidity, no condensation
Size	484×315×44mm
Weight	5.6kg

Network Power Amplifier

Embedded software: high-quality professional power amplifier embedded software V5.75

TX-87240F



Description

Installed in the weak current room or sub-control computer room, built-in high-fidelity power amplifier, used for program broadcast and local broadcast in halls, corridors, outdoors and other areas.

Feature

- * Adopt 4.3-inch capacitive touch screen, exquisite display, graphic operation interface, and simple operation.
- * Based on 3-layer network transmission technology, compatible with standard network protocols, and support 48KHz/16-bit network audio transmission across the network.
- * Support equipment management through PC client software, view system equipment information, equipment status in real time, and set equipment parameters (IP address, equipment name, etc.).
- * Support microphone broadcast voice and network background music mixing, and the background music mixing volume can be flexibly set.
- * Built-in 4 industrial-grade dedicated network audio decoding modules, built-in high-fidelity professional digital power amplifier, 240Wx4 constant voltage 100V/constant resistance 4 ohm power output
- * Support power amplifier short circuit, overload, and overheat protection functions, with LED status prompts.
- * Support 4 in 4 out audio matrix function, support touch screen for 4X4 arbitrary matrix switching and mixing output.
- * Support 4 in 4 out mute enable switch, support independent adjustment of the volume of each channel.
- * Support real-time display of 4 channel signal strength through dynamic graphics.
- * Built-in DSP audio processor, support 4-channel output signal frequency division processing, adjust the high-pass frequency, low-pass frequency, type, Q value, and number of segments.
- * Support 4 equalizers, support 8 bands of EQ per channel, and support adjustment of EQ frequency, gain, bandwidth, and type.
- * Support 4-channel digital limiter function to prevent distortion caused by excessive signal, affecting sound quality.
- * Support 8 scene pre-storage function, support choosing to load the scene, or save the current parameters to the specified scene.
- * Support remote firmware upgrade, firmware upgrade can be carried out through LAN without disassembling the machine, reducing maintenance personnel work.

Specification

Model	TX-87240F
Network Interface	Standard RJ45 network port
Transmission Rate	100Mbps
Support Protocol	DHCP, TCP, UDP, ICMP, IGMP, ARP and other standard network protocols
Audio Format	MP3, WAV
Audio Sampling Rate	48KHz
Audio Bit Depth	16 bits
Input Sensitivity	Balanced input $\pm 500\text{mVrms}$
Rated Power	240W*4@4 Ω ; 150W*4@8 Ω ; 240W*4@100V
Overall Power Consumption	1200W
Frequency Response	80Hz~16KHz, +1/-3dB
THD	$\leq 1\%$
SNR	$\geq 90\text{dB (A)}$
Separation	$\geq 75\text{dB @}1\text{kHz}$
Output Method	100V constant voltage/constant resistance 4-16 ohm output
Circuit Protection	DC output, overload, over temperature, short circuit protection circuit
Working Temperature	-10 $^{\circ}\text{C}$ ~45 $^{\circ}\text{C}$
Working Humidity	20%~80% relative humidity, no condensation
Input Power	220V~240V 50Hz/60Hz
Size	484*380*88mm
Weight	10.5kg

Network Power Amplifier

Embedded software: high-quality professional power amplifier embedded software V5.75

TX-87350F



Description

Installed in the weak current room or sub-control computer room, built-in high-fidelity power amplifier, used for program broadcast and local broadcast in halls, corridors, outdoors and other areas.

Feature

- * Adopt 4.3-inch capacitive touch screen, exquisite display, graphic operation interface, and simple operation.
- * Based on 3-layer network transmission technology, compatible with standard network protocols, and support 48KHz/16-bit network audio transmission across the network.
- * Support equipment management through PC client software, view system equipment information, equipment status in real time, and set equipment parameters (IP address, equipment name, etc.).
- * Support microphone broadcast voice and network background music mixing, and the background music mixing volume can be flexibly set.
- * Built-in 4 industrial-grade dedicated network audio decoding modules, built-in high-fidelity professional digital power amplifier, 350Wx4 constant voltage 100V/constant resistance 4 ohm power output
- * Support power amplifier short circuit, overload, and overheat protection functions, with LED status prompts.
- * Support 4 in 4 out audio matrix function, support touch screen for 4X4 arbitrary matrix switching and mixing output.
- * Support 4 in 4 out mute enable switch, support independent adjustment of the volume of each channel.
- * Support real-time display of 4 channel signal strength through dynamic graphics.
- * Built-in DSP audio processor, support 4-channel output signal frequency division processing, adjust the high-pass frequency, low-pass frequency, type, Q value, and number of segments.
- * Support 4 equalizers, support 8 bands of EQ per channel, and support adjustment of EQ frequency, gain, bandwidth, and type.
- * Support 4-channel digital limiter function to prevent distortion caused by excessive signal, affecting sound quality.
- * Support 8 scene pre-storage function, support choosing to load the scene, or save the current parameters to the specified scene.
- * Support remote firmware upgrade, firmware upgrade can be carried out through LAN without disassembling the machine, reducing maintenance personnel work.

Specification

Model	TX-87350F
Network Interface	Standard RJ45 network port
Transmission Rate	100Mbps
Support Protocol	DHCP, TCP, UDP, ICMP, IGMP, ARP and other standard network protocols
Audio Format	MP3, WAV
Audio Sampling Rate	48KHz
Audio Bit Depth	16 bits
Input Sensitivity	Balanced input $\pm 500\text{mVrms}$
Rated Power	350W*4@4 Ω ; 240W*4@8 Ω ; 350W*4@100V
Overall Power Consumption	1700W
Frequency Response	80Hz~16KHz, +1/-3dB
THD	$\leq 1\%$
SNR	$\geq 90\text{dB (A)}$
Separation	$\geq 75\text{dB @}1\text{kHz}$
Output Method	100V constant voltage/constant resistance 4-16 ohm output
Circuit Protection	DC output, overload, over temperature, short circuit protection circuit
Working Temperature	-10 $^{\circ}\text{C}$ ~45 $^{\circ}\text{C}$
Working Humidity	20%~80% relative humidity, no condensation
Input Power	220V~240V 50Hz/60Hz
Size	484*380*88mm
Weight	10.5kg

Network Power Amplifier

Embedded software: high-quality professional power amplifier embedded software V5.75

TX-87500F



Description

Installed in the weak current room or sub-control computer room, built-in high-fidelity power amplifier, used for program broadcast and local broadcast in halls, corridors, outdoors and other areas.

Feature

- * Adopt 4.3-inch capacitive touch screen, exquisite display, graphic operation interface, and simple operation.
- * Based on 3-layer network transmission technology, compatible with standard network protocols, and support 48KHz/16-bit network audio transmission across the network.
- * Support equipment management through PC client software, view system equipment information, equipment status in real time, and set equipment parameters (IP address, equipment name, etc.).
- * Support microphone broadcast voice and network background music mixing, and the background music mixing volume can be flexibly set.
- * Built-in 4 industrial-grade dedicated network audio decoding modules, built-in high-fidelity professional digital power amplifier, 500Wx4 constant voltage 100V/constant resistance 4 ohm power output.
- * Support power amplifier short circuit, overload, and overheat protection functions, with LED status prompts.
- * Support 4 in 4 out audio matrix function, support touch screen for 4X4 arbitrary matrix switching and mixing output.
- * Support 4 in 4 out mute enable switch, support independent adjustment of the volume of each channel.
- * Support real-time display of 4 channel signal strength through dynamic graphics.
- * Built-in DSP audio processor, support 4-channel output signal frequency division processing, adjust the high-pass frequency, low-pass frequency, type, Q value, and number of segments.
- * Support 4 equalizers, support 8 bands of EQ per channel, and support adjustment of EQ frequency, gain, bandwidth, and type.
- * Support 4-channel digital limiter function to prevent distortion caused by excessive signal, affecting sound quality.
- * Support 8 scene pre-storage function, support choosing to load the scene, or save the current parameters to the specified scene.
- * Support remote firmware upgrade, firmware upgrade can be carried out through LAN without disassembling the machine, reducing maintenance personnel work.

Specification

Model	TX-87500F
Network Interface	Standard RJ45 network port
Transmission Rate	100Mbps
Support Protocol	DHCP, TCP, UDP, ICMP, IGMP, ARP and other standard network protocols
Audio Format	MP3, WAV
Audio Sampling Rate	48KHz
Audio Bit Depth	16 bits
Input Sensitivity	Balanced input $\pm 500\text{mVrms}$
Rated Power	500W*4@4 Ω ; 350W*4@8 Ω ; 500W*4@100V
Overall Power Consumption	2500W
Frequency Response	80Hz~16KHz, +1/-3dB
THD	$\leq 1\%$
SNR	$\geq 90\text{dB (A)}$
Separation	$\geq 75\text{dB @}1\text{kHz}$
Output Method	100V constant voltage/constant resistance 4-16 ohm output
Circuit Protection	DC output, overload, over temperature, short circuit protection circuit
Working Temperature	-10 $^{\circ}\text{C}$ ~45 $^{\circ}\text{C}$
Working Humidity	20%~80% relative humidity, no condensation
Input Power	220V~240V 50Hz/60Hz
Size	484x380x88mm
Weight	10.5kg

Network Power Amplifier

Embedded software: high-quality professional power amplifier embedded software V5.75

TX-87700F



Description

Installed in the weak current room or sub-control computer room, built-in high-fidelity power amplifier, used for program broadcast and local broadcast in halls, corridors, outdoors and other areas.

Feature

- * Adopt 4.3-inch capacitive touch screen, exquisite display, graphic operation interface, and simple operation.
- * Based on 3-layer network transmission technology, compatible with standard network protocols, and support 48KHz/16-bit network audio transmission across the network.
- * Support equipment management through PC client software, view system equipment information, equipment status in real time, and set equipment parameters (IP address, equipment name, etc.).
- * Support microphone broadcast voice and network background music mixing, and the background music mixing volume can be flexibly set.
- * Built-in 4 industrial-grade dedicated network audio decoding modules, built-in high-fidelity professional digital power amplifier, 700Wx4 constant voltage 100V/constant resistance 4 ohm power output
- * Support power amplifier short circuit, overload, and overheat protection functions, with LED status prompts.
- * Support 4 in 4 out audio matrix function, support touch screen for 4X4 arbitrary matrix switching and mixing output.
- * Support 4 in 4 out mute enable switch, support independent adjustment of the volume of each channel.
- * Support real-time display of 4 channel signal strength through dynamic graphics.
- * Built-in DSP audio processor, support 4-channel output signal frequency division processing, adjust the high-pass frequency, low-pass frequency, type, Q value, and number of segments.
- * Support 4 equalizers, support 8 bands of EQ per channel, and support adjustment of EQ frequency, gain, bandwidth, and type.
- * Support 4-channel digital limiter function to prevent distortion caused by excessive signal, affecting sound quality.
- * Support 8 scene pre-storage function, support choosing to load the scene, or save the current parameters to the specified scene.
- * Support remote firmware upgrade, firmware upgrade can be carried out through LAN without disassembling the machine, reducing maintenance personnel work.

Specification

Model	TX-87700F
Network Interface	Standard RJ45 network port
Transmission Rate	100Mbps
Support Protocol	DHCP, TCP, UDP, ICMP, IGMP, ARP and other standard network protocols
Audio Format	MP3, WAV
Audio Sampling Rate	48KHz
Audio Bit Depth	16 bits
Input Sensitivity	Balanced input $\pm 500\text{mVrms}$
Rated Power	700W*4@4 Ω (MAX); 500W*4@8 Ω
Overall Power Consumption	4100W
Frequency Response	80Hz~16KHz, +1/-3dB
THD	$\leq 1\%$
SNR	$\geq 90\text{dB (A)}$
Separation	$\geq 75\text{dB @}1\text{kHz}$
Output Method	Constant resistance 4-16 ohm output
Circuit Protection	DC output, overload, over temperature, short circuit protection circuit
Working Temperature	-10 $^{\circ}\text{C}$ ~45 $^{\circ}\text{C}$
Working Humidity	20%~80% relative humidity, no condensation
Input Power	~220V 50Hz
Size	484x425x88 mm
Weight	10.8kg

Network Power Amplifier

Embedded software: high-quality professional power amplifier embedded software V5.75

TX-871000F



Description

Installed in the weak current room or sub-control computer room, built-in high-fidelity power amplifier, used for program broadcast and local broadcast in halls, corridors, outdoors and other areas.

Feature

- * Adopt 4.3-inch capacitive touch screen, exquisite display, graphic operation interface, and simple operation.
- * Based on 3-layer network transmission technology, compatible with standard network protocols, and support 48KHz/16-bit network audio transmission across the network.
- * Support equipment management through PC client software, view system equipment information, equipment status in real time, and set equipment parameters (IP address, equipment name, etc.).
- * Support microphone broadcast voice and network background music mixing, and the background music mixing volume can be flexibly set.
- * Built-in 4 industrial-grade dedicated network audio decoding modules, built-in high-fidelity professional digital power amplifier, 1000Wx4 constant voltage 100V/ constant resistance 4 ohm power output
- * Support power amplifier short circuit, overload, and overheat protection functions, with LED status prompts.
- * Support 4 in 4 out audio matrix function, support touch screen for 4X4 arbitrary matrix switching and mixing output.
- * Support 4 in 4 out mute enable switch, support independent adjustment of the volume of each channel.
- * Support real-time display of 4 channel signal strength through dynamic graphics.
- * Built-in DSP audio processor, support 4-channel output signal frequency division processing, adjust the high-pass frequency, low-pass frequency, type, Q value, and number of segments.
- * Support 4 equalizers, support 8 bands of EQ per channel, and support adjustment of EQ frequency, gain, bandwidth, and type.
- * Support 4-channel digital limiter function to prevent distortion caused by excessive signal, affecting sound quality.
- * Support 8 scene pre-storage function, support choosing to load the scene, or save the current parameters to the specified scene.
- * Support remote firmware upgrade, firmware upgrade can be carried out through LAN without disassembling the machine, reducing maintenance personnel work.

Specification

Model	TX-871000F
Network Interface	Standard RJ45 network port
Transmission Rate	100Mbps
Support Protocol	DHCP, TCP, UDP, ICMP, IGMP, ARP and other standard network protocols
Audio Format	MP3, WAV
Audio Sampling Rate	48KHz
Audio Bit Depth	16 bits
Input Sensitivity	Balanced input $\pm 500\text{mVrms}$
Rated Power	1000W*4@4 Ω (MAX); 700W*4@8 Ω
Overall Power Consumption	5200W
Frequency Response	80Hz~16KHz, +1/-3dB
THD	$\leq 1\%$
SNR	$\geq 90\text{dB}$ (A)
Separation	$\geq 75\text{dB}$ @1kHz
Output Method	Constant resistance 4-16 ohm output
Circuit Protection	DC output, overload, over temperature, short circuit protection circuit
Working Temperature	-10 $^{\circ}\text{C}$ ~45 $^{\circ}\text{C}$
Working Humidity	20%~80% relative humidity, no condensation
Input Power	~220V 50Hz
Size	484*425*88 mm
Weight	11.5kg

Professional Power Amplifier

Embedded software: high-quality professional power amplifier embedded software V5.75

TX-87500FB



Description

Installed in the weak current room or sub-control computer room, built-in high-fidelity power amplifier, used for program broadcast and local broadcast in halls, corridors, outdoors and other areas.

Feature

- * Adopt 4.3-inch capacitive touch screen, exquisite display, graphic operation interface, and simple operation.
- * Based on 3-layer network transmission technology, compatible with standard network protocols, and support 48KHz/16-bit network audio transmission across the network.
- * Support equipment management through PC client software, view system equipment information, equipment status in real time, and set equipment parameters (IP address, equipment name, etc.).
- * Support microphone broadcast voice and network background music mixing, and the background music mixing volume can be flexibly set.
- * Built-in 4 industrial-grade dedicated network audio decoding modules, built-in high-fidelity professional digital power amplifier, 500Wx4 constant voltage 100V/ constant resistance 4 ohm power output.
- * Support power amplifier short circuit, overload, and overheat protection functions, with LED status prompts.
- * Support 4 in 4 out audio matrix function, support touch screen for 4X4 arbitrary matrix switching and mixing output.
- * Support 4 in 4 out mute enable switch, support independent adjustment of the volume of each channel.
- * Support real-time display of 4 channel signal strength through dynamic graphics.
- * Built-in DSP audio processor, support 4-channel output signal frequency division processing, adjust the high-pass frequency, low-pass frequency, type, Q value, and number of segments.
- * Support 4 equalizers, support 8 bands of EQ per channel, and support adjustment of EQ frequency, gain, bandwidth, and type.
- * Support 4-channel digital limiter function to prevent distortion caused by excessive signal, affecting sound quality.
- * Support 8 scene pre-storage function, support choosing to load the scene, or save the current parameters to the specified scene.
- * Support remote firmware upgrade, firmware upgrade can be carried out through LAN without disassembling the machine, reducing maintenance personnel work.
- * Support screen-off time setting, which can be set to off, 2 minutes, 5 minutes, 10 minutes.
- * Support to restore factory settings, and restore device parameters to factory settings.
- * Support dual network interfaces to realize seamless dual network mutual backup function.
- * Equipped with one EMC input, when the EMC alarm signal is input, all normal signals can be muted, and only the EMC signal is broadcast.

Specification

Model	TX-87500FB
Network Interface	Standard RJ45 dual network port input
Transmission Rate	100Mbps
Support Protocol	DHCP, TCP, UDP, ICMP, IGMP, ARP and other standard network protocols
Audio Format	MP3, WAV
Audio Sampling Rate	48KHz
Audio Bit Depth	16 bits
Input Sensitivity	Balanced input $\pm 500\text{mVrms}$
Rated Power	500W*4@4 Ω ; 350W*4@8 Ω ; 500W*4@100V
Overall Power Consumption	2500W
Frequency Response	80Hz~16KHz, +1/-3dB
THD	$\leq 1\%$
SNR	$\geq 90\text{dB}$ (A)
Separation	$\geq 75\text{dB}$ @1kHz
Output Method	100V constant voltage/constant resistance 4-16 ohm output
Circuit Protection	DC output, overload, over temperature, short circuit protection circuit
Working Temperature	-10 $^{\circ}\text{C}$ ~45 $^{\circ}\text{C}$
Working Humidity	20%~80% relative humidity, no condensation
Input Power	220V~240V 50Hz/60Hz
Size	484*380*88mm
Weight	10.5kg