

Cloud PA System

Catalogue V.24

Guangdong Baolun Electronics Co., Ltd

Add: Building A13-1 Yiku Industrial Park, The Hills, Dongyi Road Panyu District Guangzhou China 511492

Tel: +86-20-34549655, 84593197, 31104730, 31104729 Fax: +86-20-84548799

Website: www.itctech.com.cn E-mail: info@itc-pa.com.cn

* Specifications are subject to change without notice.



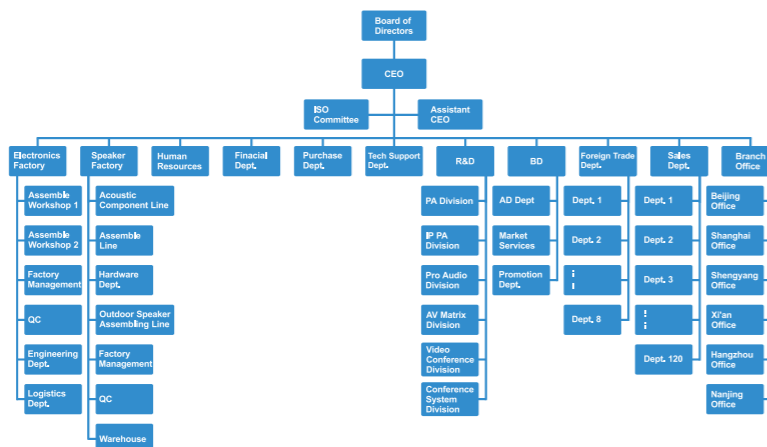
Company Introduction

Guangdong Baolun Electronics Co., LTD. (ITC) was established in 1993, located in Panyu district of Guangzhou. ITC is the No.1 and the largest integrated supplier of audiovisual & lighting systems, integrating R&D, production, sales and service together in China for more than 31 years. ITC owns 4 office buildings, 6 R&D centers and 5 factories. There is also an industry-leading intelligent manufacturing industrial park of over 300,000 square meters under construction, which is expected to be put into operation by the end of 2023. We have 1200 R&D engineers, 2000 pre-sales and after-sales technicians, 142 sales departments, all totally more than 6000 employees.

ITC can provide integrated solution from PA system, IP intercom system, Voice evacuation system, HD video conference system, 5G digital conference, Paperless conference, Interpretation system, Central control system, Professional sound system, LED screen, Stage light & Architectural light, etc. We are the official supplier for important events, including 2008 Beijing Olympic Games, 2010 Shanghai World Expo, 2010 Guangzhou Asian Games, 2016 Hangzhou G20 Summit, 2016 Turkey expo, 2022 Beijing Winter Olympics, India subway, USA chain shops, Guyana national conference, Uzbekistan national defense conference, Five Nigeria national airport, CBE Ethiopia bankOur worldwide successful projects are more than 1.5 million cases, and ITC products have been exported to more than 100 countries around the world.

All of our products are developed and manufactured by ourselves. Our products are compliant with CE, RoHS, EN54, UL, CCC, NOM certificate. ITC possesses more than 3000 intellectual properties, including appearance patents, software copyrights, utility model patents and invention patents, and has won the honorary titles of "Quality Product", "Famous Brand" and "Most Competitive Brand" for many years. ITC is the "High-tech Enterprise" in China.

Company Organization



Our Production Lines

A group of highest technology equipment are used to strengthen the reliability and output capacity: SMT machine, reflow oven & numerical control cutting machine. 95% PCB of the equipments are made by SMT machine to ensure quality consistency and higher reliability. The numerical cutting machines enhance the equipment in elaborate & elegant level. A comprehensive process of tests are be involved: drop test, vibration test, aging, Hipot & RoHS test.

Certificates:

CCC, ISO9001, CE & RoHS, IEC60914. Parts of our product are complied with certificates: CB, SASO, ETL, UL, FCC, EN54-16 and EN54-24. Parts of loudspeakers are certified by waterproof, dustproof, fire-proof & explosion-proof.

CATALOG

- Company Introduction1-2
- About US3-4
- Company History5
- Cloud PA System Controller TX-86006
- Cloud PA System Android APP SoftwareV2.20 TX-8600AR.....7
- Cloud PA System iOS APP SoftwareV2.20 TX-8600IR.....8
- Cloud PA System Software V2.57 TX-8600R9
- Cloud PA System PC Software V2.41 TX-8600U10
- Paging Microphone TX-860211
- IP Wall-mounted Terminal TX-860612
- Network Speaker TX-860713
- Control Panel TX-8611.....14
- Cloud broadcast alarm collector TX-862315
- CD Player TX-862716
- Tuner TX-862817
- Cloud Broadcast Audio Collector TX-867018
- IP Network Terminal Amplifier TX-86120Z.....19
- IP Network Terminal Amplifier TX-86240Z.....20
- IP Network Terminal Amplifier TX-86350Z.....21
- IP Network Terminal Amplifier TX-86500Z.....22

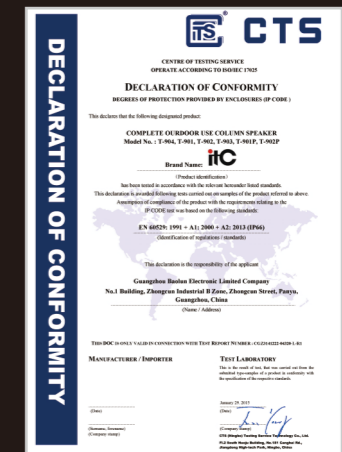
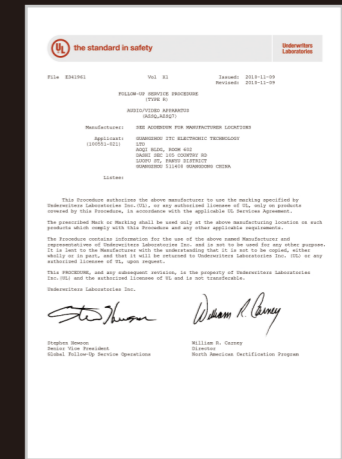
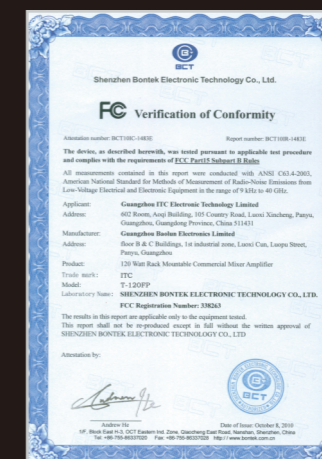
Office



Factory



Certifications



Year 1993

ITC was founded in Guangzhou, regarded as pioneer of Digital Public Address System in China.

Year 1995

ITC successfully registered trademark ITC in China.

Year 1998

The first full-intelligent PA system was successfully developed and launched to the market.

Year 2000

ITC set up 8 sales subsidiaries and technical assistance centers in Guangzhou, Beijing, Shanghai, Hangzhou, Nanjing, Xi'an, Shenyang and Chengdu. ITC also established proxy services agencies in 48 provinces all over China.

Year 2001

The first digital network PA system was successfully developed and launched to market.

Year 2002

Due to speed business expansion, ITC set up numerous large production plants in Guangzhou. The whole company broadened to six large plates: four production plants + marketing and logistics center + R & D center; totally more than 800 manufacturing workers.

Year 2003

ITC developed full-digital IP PA system; became the world's first IP PA R & D manufacturer. In the same year a full range of products passed quality inspection, 3C, CE, RoHS and other domestic and foreign certification.

Year 2004

For successive years, ITC was awarded as "The Most Competitive Brand" and "Top Ten PA Brand" by domestic renowned media.

Year 2005

In order to meet the needs of global strategy, ITC had registered in 35 countries "ITC" trademark, and collaborated with 56 high-quality foreign strategic partners.

Year 2006

ITC was awarded as "Intelligent Building Quality Products," "Intelligent Building Leading Brands" as etc by China Intelligent Building Industry Association. There's no replacement in the professional field.

Year 2007

The first most advanced Fire Alarm Voice Evacuation System was successfully developed. Till the end of 2007, ITC had won totally 12 core technology and design patents.

Year 2008

ITC successfully marched into 2008 Beijing Olympic games: the Olympic Forest Park, Capital Stadium, Beijing Industry University Gymnasium, and the Olympic Media MCI sign Center and other key Olympic venues.

Year 2009

ITC successfully marched into the Shanghai World Expo venues including Oman, Ireland Museum, Museum of Turkmenistan, Pakistan, and Iran and so on. In the same year, she went into Asia's largest railway station (South Station in Guangzhou), Beijing Subway, Beijing-Tianjin inter-city Express and other famous projects.

Year 2010

ITC successfully marched into 2010 Guangzhou Asian Games Venues including Gymnasium, NBA Stadiums, Swimming Pool, Bicycle Roller Skating Center, the Athletes Village, Main Press Centre, Media Village, Technical Officials Village and other logistics service area. ITC cooperated with numerous well-known enterprises the following eminent projects: the Polish National Central Banks, the International Financial Building of Azerbaijan, the Romanian Five-star Hotel, the Dubai Seven Star Hotel, the Singapore Racecourse, the USA Florida Intercontinental Hotel, the University of Toronto, the National Museum of Istanbul, the Turkey Istanbul High School, the London Art Galleries and so on.

Year 2011

ITC successfully installed Network Audio System for Shenzhen 2011 World Universiade Olympic Games. Move into new 20,000 square meters manufacturing plant, SMT machine, digital PC controlled punching machine been imported. Cobranet network system and Linux Network Audio System have been launched. Launched new digital conference system.

Year 2012

ITC launched its Cloud-based HD Video Conference System to realize the conference meeting face to face by video without geographical limitation.

Year 2015

ITC installed IP PA & Intercom System in the Subway Center of Chanakyapuri New Delhi India.

Year 2016

ITC installed Evacuation Voice Alarm Public Address System and IP Network Intercom System to EXPO 2016 Antalya in Turkey.

Year 2017

ITC LED Screen, Stage lighting, architecture lighting factory established. ITC Turn-key solution applied to UNASUR Building, Bolivia.

Year 2018

ITC conference system used in the United Nations Convention. Large conference system applied to Ethiopia Afar National Regional State Finance & Economic Development Bureau, Africa.

Year 2019

ITC own independent R&D building which area is about 4,200 square meters. KTV One-stop Solution applied to Grand Park Hotel Myanmar.

Year 2020

Foundation Laying Ceremony of ITC Industrial Park. ITC 243.3m² P10 Outdoor LED video Wall applied to Vincom Mega Mall Ocean Park City Vietnam.

Cloud PA System Controller TX-8600



Description

It is the controller of the Cloud PA System that has system management functions such as device management, task management, music library management, and account management.

Features

- * Aluminum housing technology, small, beautiful and exquisite appearance, solid structure.
- * 2.8-inch TFT color screen. The screen is delicate, and it can display the controller status, IP information, and current timing task information in real time.
- * Industrial-grade 16-core processor, embedded software, no operating system, high stability, no infection, fast boot time of less than 3 seconds.
- * Based on 3-layer network transmission technology; compatible with standard network protocols such as DHCP, TCP, UDP, ICMP, IGMP, ARP, etc.
- * It adopts 48kHz sampling rate, self-developed multi-track lossless audio transmission technology. Support DSP sound effect processing, and achieves CD-level sound quality.
- * Support mobile APP to control the system through WiFi/3G/4G/5G and other networks, and it can perform full-function system management such as device management, timing programming, and task control. Support mobile APP to remotely view system equipment information and device status in real time, and support mobile APP to remotely set device parameters (IP address, device name, etc.).
- * Support mobile phone APP programming function, support mobile phone APP remote timing programming, realize unattended timing, fixed-point, fixed-track program playback, and support to play different programs to different zones at the same time without interfering with each other.
- * Support mobile phone APP real-time logarithmic sound source equipment (network CD player, network tuner) playback control, support mobile phone APP to view song lists, select songs on demand, and realize digital audio sources play programs on designated network terminals through the network.
- * Support mobile phone APP for zone editing. You can flexibly divide zones without rewiring, realize zone management of system terminals.
- * Support user permission management, support accounts with two permission levels for ordinary users and administrators, support the establishment of 30 accounts, and 10 accounts to log in at the same time.
- * Built-in 32GB storage space; support media music library update through SD card or PC management software, support mobile phone APP for music library editing, music copy/move/delete and other operations.
- * Support the host to realize the system automatic time calibration and global unified time calibration by connecting to the external cloud server. Without additional timing equipment, it can achieve millisecond-level system clock accuracy.
- * Built-in high-precision RTC clock. When the host is temporarily disconnected from the external network, the system time is still correct, ensuring stable and reliable operation of the system.
- * Built-in WIFI hotspot, support the host WiFi button to turn on the host WiFi hotspot, which is convenient for users to manage the system without WiFi.
- * Built-in IP conflict detection. When the host IP conflicts with the IP of other network devices, the host has an IP conflict prompt, which is convenient for management personnel to find and deal with in time.
- * Support dual power supply, support standard POE power supply and DC24V power supply.
- * Support remote firmware upgrade. With no need to disassemble the machine, firmware upgrade can be carried out through the local area network, reducing the work intensity of maintenance personnel.

Specifications

Model	TX-8600
Network Interface	Standard RJ45 input (support POE power supply)
Transmission Rate	100Mbps
Network Protocol	Compatible with standard network protocols such as DHCP, TCP, UDP, ICMP, IGMP, ARP, etc.
Audio Format	MP3, WAV
Audio Mode	16-bit CD sound quality
Screen Size	2.8 inches
Screen Resolution	320*240 pixels
Ambient Temperature	-10℃~+55℃
Ambient Humidity	20%~80% relative humidity, no condensation
Power Consumption	≤5W
Power Supply	DC 24V/1.5A, standard POE power supply
Size	132×83×27 (L×W×H) mm
Weight	0.36kg

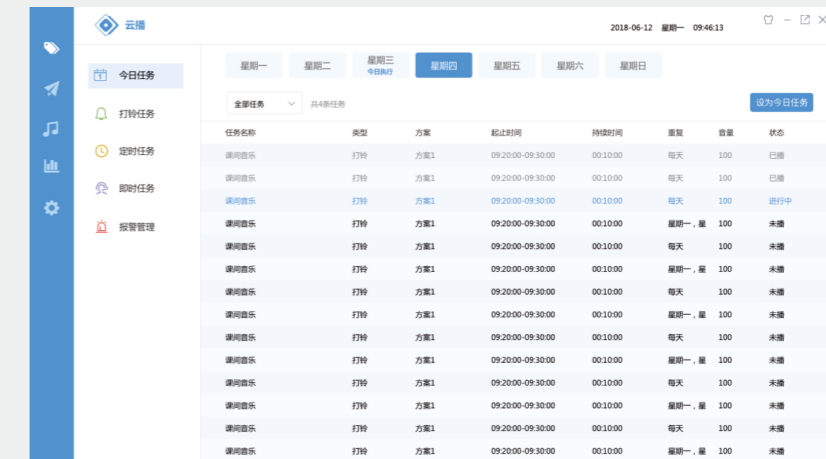
Cloud PA System Software V2.57



Features

The software is installed on the PC and accessed through the LAN, which can realize operations such as music library music file update, system device firmware remote upgrade, system data backup and restoration.

Cloud PA System PC Software V2.41



Description

Cloud PA System PC software is a smart broadcasting software. Through the client, functions such as viewing tasks, system equipment status, configuring system equipment, programming timing tasks, and managing music can be realized. It provides intelligent solutions for audio transmission.

Features

- * Support system control through network. And it can perform full-function system management such as device management, timing programming, and task control. Support to remotely view system equipment information and device status in real time, and support mobile APP to remotely set device parameters (IP address, device name, etc.).
- * Support zone management, support adding/deleting/editing zones, viewing zone details & terminal device information, and adding terminals to zones.
- * Support to initiate instant tasks through the mobile APP, select network audio source devices, flexibly select the duration, and support the playback interface to control tasks: play, pause, play mode, previous song, next song, volume. And you can adjust the music playback progress bar through the mobile APP to play the designated track in specific time.
- * Support timing task management, unattended timing, fixed-point, fixed-track program playback, and support to play different programs to different zones at the same time without interfering with each other.
- * Support the functions of quick start/stop of timing tasks, cloning timing tasks.
- * Support programming multiple sets of ringing programs, support ringing programs to quickly start/disable, clone programs, support multiple sets of ringing programs to take effect at the same time, each set of scheduled ringing programs supports multiple sets of scheduled ringing tasks at the same time, and supports ringing tasks Quickly start/stop, clone ringing tasks.
- * Support batch modification of the tasks of the ringing plan, batch deletion, batch modification of the advance execution time or postpone execution time of the task.
- * Support setting the priority of ringing, timing, and instant tasks, including normal, important, and urgent. The priority is urgent first, important first, normal.
- * Support alarm task management. You can view and edit alarm tasks. Support setting alarm task playback mode, alarm trigger mode (including single zone, whole zone, adjacent zone+1, adjacent zone+2, adjacent zone+3, adjacent zone+4), Alarm release mode (automatic release, manual release), configuration port.
- * Support to view today's tasks, support to view tasks from Monday to Sunday through sliding switch, and switch from non-current tasks to tasks performed on the same day.
- * Support the APP to check whether the network amplifier is faulty in real time, and to check the alarm status in real time.
- * Support the management of music library, support copy/transfer music to different music folders; Support uploading local computer music files; music library can provide all audio terminals with timed playback and real-time VOD media services.
- * Support user permission management, support accounts with two permission levels for ordinary users and administrators, support the establishment of 30 accounts, and 10 accounts to log in at the same time.
- * Support client backup system data. Support to restore backup system data.

Cloud PA System Android APP Software V2.20



Description

Cloud PA System Android APP software is a smart broadcasting software. With a graphical APP interface, you can easily manage the system through your mobile phone, which is user-friendly and convenient. And it can bring you with good experience and intelligent solutions for audio communication.

Features

- * Support system control through WiFi/3G/4G/5G and other networks. And it can perform full-function system management such as device management, timing programming, and task control. Support mobile APP to remotely view system equipment information and device status in real time, and support mobile APP to remotely set device parameters (IP address, device name, etc.).
- * Support zone management, support adding/deleting/editing zones, viewing zone details & terminal device information, and adding terminals to zones.
- * Support to initiate instant tasks through the mobile APP, select network audio source devices, flexibly select the duration, and support the playback interface to control tasks: play, pause, play mode, previous song, next song, volume. And you can adjust the music playback progress bar through the mobile APP to play the designated track in specific time.
- * Support timing task management, unattended timing, fixed-point, fixed-track program playback, and support to play different programs to different zones at the same time without interfering with each other.
- * Support the functions of quick start/stop of timing tasks, cloning timing tasks.
- * Support programming multiple sets of ringing programs, support ringing programs to quickly start/disable, clone programs, support multiple sets of ringing programs to take effect at the same time, each set of scheduled ringing programs supports multiple sets of scheduled ringing tasks at the same time, and supports ringing tasks Quickly start/stop, clone ringing tasks.
- * Support batch modification of the tasks of the ringing plan, batch deletion, batch modification of the advance execution time or postpone execution time of the task.
- * Support setting the priority of ringing, timing, and instant tasks, including normal, important, and urgent. The priority is urgent first, important first, normal.
- * Support alarm task management. You can view and edit alarm tasks. Support setting alarm task playback mode, alarm trigger mode (including single zone, whole zone, adjacent zone+1, adjacent zone+2, adjacent zone+3, adjacent zone+4), Alarm release mode (automatic release, manual release), configuration port.
- * Support to view today's tasks, support to view tasks from Monday to Sunday through sliding switch, and switch from non-current tasks to tasks performed on the same day.
- * Support the mobile phone APP to check whether the network amplifier is faulty in real time, and to check the alarm status in real time.
- * Support the management of music library, support copy/transfer music to different music folders, music library can provide all audio terminals with timed playback and real-time VOD media services.
- * Support user permission management, support accounts with two permission levels for ordinary users and administrators, support the establishment of 30 accounts, and 10 accounts to log in at the same time.
- * Mobile APP software supports running on Android phones with system version 4.4 or above, and supports downloading in the APP application store.

Cloud PA System iOS APP Software V2.20



Description

Cloud PA System iOS APP software is a smart broadcasting software. With a graphical APP interface, you can easily manage the system through your mobile phone, which is user-friendly and convenient. And it can bring you with good experience and intelligent solutions for audio communication.

Features

- * Support system control through WiFi/3G/4G/5G and other networks. And it can perform full-function system management such as device management, timing programming, and task control. Support mobile APP to remotely view system equipment information and device status in real time, and support mobile APP to remotely set device parameters (IP address, device name, etc.).
- * Support zone management, support adding/deleting/editing zones, viewing zone details & terminal device information, and adding terminals to zones.
- * Support to initiate instant tasks through the mobile APP, select network audio source devices, flexibly select the duration, and support the playback interface to control tasks: play, pause, play mode, previous song, next song, volume. And you can adjust the music playback progress bar through the mobile APP to play the designated track in specific time.
- * Support timing task management, unattended timing, fixed-point, fixed-track program playback, and support to play different programs to different zones at the same time without interfering with each other.
- * Support the functions of quick start/stop of timing tasks, cloning timing tasks.
- * Support programming multiple sets of ringing programs, support ringing programs to quickly start/disable, clone programs, support multiple sets of ringing programs to take effect at the same time, each set of scheduled ringing programs supports multiple sets of scheduled ringing tasks at the same time, and supports ringing tasks Quickly start/stop, clone ringing tasks.
- * Support batch modification of the tasks of the ringing plan, batch deletion, batch modification of the advance execution time or postpone execution time of the task.
- * Support setting the priority of ringing, timing, and instant tasks, including normal, important, and urgent. The priority is urgent first, important first, normal.
- * Support alarm task management. You can view and edit alarm tasks. Support setting alarm task playback mode, alarm trigger mode (including single zone, whole zone, adjacent zone+1, adjacent zone+2, adjacent zone+3, adjacent zone+4), Alarm release mode (automatic release, manual release), configuration port.
- * Support to view today's tasks, support to view tasks from Monday to Sunday through sliding switch, and switch from non-current tasks to tasks performed on the same day.
- * Support the mobile phone APP to check whether the network amplifier is faulty in real time, and to check the alarm status in real time.
- * Support the management of music library, support copy/transfer music to different music folders, music library can provide all audio terminals with timed playback and real-time VOD media services.
- * Support user permission management, support accounts with two permission levels for ordinary users and administrators, support the establishment of 30 accounts, and 10 accounts to log in at the same time.
- * The mobile APP software supports running on IPHONE with system version 8.0 or above, and supports downloading in the APP application store.

Paging Microphone

Embedded software: Microphone call control embedded software V1.32
TX-8602



Description

It is suitable for various call centers, alarm centers, duty rooms, leadership offices, conference rooms and other places, which supports unidirectional paging (point-to-point, zone or whole zone) and monitoring various terminals in the network.

Features

- * With a 7-inch HD touch screen, delicate screen, graphical operation interface and excellent touch experience.
- * Support paging zone display. The display screen can display zone list, zone terminal status and other information in real time.
- * Support custom shortcut keys. According to the demands of uses, they can configure broadcasting shortcut keys for easy and fast applications.
- * Based on layer 3 network transmission technology. Compatible with standard network protocols such as DHCP, TCP, UDP, ICMP, IGMP, ARP.
- * Adopt super directional microphone and 48KHz sampling rate to ensure high-quality broadcasting voice quality.
- * Support end-to-end transmission with extremely low latency (5ms), and "zero" delayed paging broadcasting for any zone.
- * Through mobile APP, it can control the device through WiFi / 3G / 4G / 5G and other networks, remote view real-time device information and device status, and remotely set device parameters (IP address, device name, etc.).
- * Support automatic IP acquisition, DHCP dynamic and static IP configuration methods.
- * Support full-source mixing function, digital mixing of broadcasting services and network background music for the various types of activities such as broadcasting gymnastics, flag raising, sports meeting, community park and so on.
- * Support independent adjustment of microphone volume and network background music volume through paging microphone.
- * Support custom microphone priority and three priority levels optional. The microphone with higher priority take precedence, and the microphones same priority mix.
- * Support login permission management, account and password login management. Users can log in with accounts with different permissions.
- * The megaphone supports external microphone mode through the microphone or headset microphone interface, which is convenient for users to apply in a variety of occasions.
- * Support monitoring function. Built-in full-range high-fidelity speakers achieve network monitoring of any terminal, and the monitoring volume can be adjusted.
- * With low power consumption design, it automatically enters dormant and power-saving state when there is no operation.
- * Support dual power supply, standard POE power supply, DC24V / 2A power supply.
- * Support remote firmware upgrade with no need to disassemble the machine. The firmware can be upgraded through the LAN to reduce the work intensity of maintenance personnel.

Specifications

Model	TX-8602
Network Interface	Standard RJ45 input (support POE power supply)
Transmission Rate	100Mbps
Protocol	Compatible with standard network protocols such as DHCP, TCP, UDP, ICMP, IGMP, ARP, etc.
Screen Size	7 inches
Screen Resolution	800*480 pixels
Keyboard Input Method	Touch
MIC input	1 group (optional straw or rear 3.5mm microphone interface input)
MIC Sensitivity	Gooseneck straw/rear 3.5mm microphone interface: 10mV
Microphone Type	Cardioid directional capacitive electret
Built-in Speaker Impedance and Rated Power	4Ω, 1.5W
Headphone Load	32Ω
THD	THD+N≤0.3%
Frequency Response	80Hz~16kHz +1/-3dB
SNR	≥75dB(A)
Operating Temperature	-10℃~+55℃
Operating Humidity	20%~80% relative humidity, no condensation
Power Consumption	≤10W
Power Supply	DC24V/2A, standard POE power supply
Size	200×160×62 mm
Microphone Length	415mm
Net weight	1.2kg

IP Wall-mounted Terminal

Embedded software: Digital IP network terminal embedded software V2.0
TX-8606



Description

It is widely used in ordinary classrooms, multimedia classrooms, offices, conference rooms, prisons, hospital departments, subways and other places to broadcast radio or background music programs.

Features

- * With professional integrated wall-mounted design, solid structure of the whole machine, it is in line with modern design concept, very beautiful and elegant.
- * Built-in industrial-grade dedicated network audio decoding chip to realize broadcast and network music program functions.
- * Based on layer 3 network transmission technology. Compatible with standard network protocols such as DHCP, TCP, UDP, ICMP, IGMP, ARP.
- * Support 48kHz sampling rate, DSP sound effect processing, CD-level sound quality effect.
- * Through mobile APP, it can control the device through WiFi / 3G / 4G / 5G and other networks, remote view real-time device information and device status, and remotely set device parameters (IP address, device name, etc.).
- * Support automatic IP acquisition, DHCP dynamic and static IP configuration methods.
- * Support remote volume configuration through mobile phone APP, volume batch copy function, and batch volume configuration for multiple devices.
- * With full source mixing function, it supports digital mixing of broadcasting services and network background music, meeting the demands of broadcasts and background music mixing scene application in various activities such as broadcast gymnastics, flag raising, sports scenes, community park.
- * With 1 line input interface and 1 line output interface. Suitable for local local PA broadcasting function.
- * The 2.4G wireless audio module can be expanded to realize local amplification of the 2.4G wireless microphone.
- * Expandable connection with Bluetooth receiver to receive Bluetooth audio for local sound reinforcement.
- * Built-in 2 × 20W (MAX) constant-impedance power amplifier has 2 power output interfaces connected to the speaker. With delicate sound quality and strong power.
- * As networked products, it is easy to expand and install with no space limitation and no need to increase equipment room management equipment.
- * Priority function: 1) Network alarm is the highest priority; 2) AUX has priority over network background music.
- * Support remote firmware upgrade with no need to disassemble the machine. The firmware can be upgraded through the LAN to reduce the work intensity of maintenance personnel.

Specifications

Model	TX-8606
Network Interface	Standard RJ45 input
Transmission Rate	100Mbps
Protocol	Compatible with DHCP, TCP, UDP, ICMP, IGMP, ARP and other standard network protocols
Audio Format	MP3, WAV
Audio Mode	16-bit CD sound quality
Sampling Rate	48KHz
Output Power	2 × 20W (MAX) industry standard terminals
THD	≤1%
Frequency Response	80Hz ~ 16KHz + 1 / -3dB
SNR	≥ 75dB (A)
AUX Input Sensitivity	350mV industry standard crimping terminal
Operating Temperature	-10℃ ~ +55℃
Operating Environment humidity	20% ~ 80% relative humidity, no condensation
Total Power Consumption	≤40W
Power Supply	~190-240V 50-60Hz (power adapter); DC 24V / 1.5A
Dimension	132 × 83 × 26 mm
Weight	0.32Kg

Network Speaker

Embedded software: digital IP network terminal embedded software V2.0

TX-8607



Description

It is widely used in ordinary classrooms, multimedia classrooms, offices, conference rooms, prisons, hospital departments, subways and other places to broadcast radio or background music programs.

Features

- * With professional integrated wall-mounted design, exquisite and beautiful.
- * Built-in industrial-grade dedicated network audio decoding chip to realize broadcast and network music program functions.
- * Based on layer 3 network transmission technology. Compatible with standard network protocols such as DHCP, TCP, UDP, ICMP, IGMP, ARP.
- * Support 48kHz sampling rate, DSP sound effect processing, CD-level sound quality effect.
- * Through mobile APP, it can control the device through WiFi / 3G / 4G / 5G and other networks, remote view real-time device information and device status, and remotely set device parameters (IP address, device name, etc.).
- * Support automatic IP acquisition, DHCP dynamic and static IP configuration methods.
- * Support remote volume configuration through mobile phone APP, volume batch copy function, and batch volume configuration for multiple devices.
- * With full source mixing function, it supports digital mixing of broadcasting services and network background music, meeting the demands of broadcasts and background music mixing scene application in various activities such as broadcast gymnastics, flag raising, sports scenes, community park.
- * Support speaker fault detection function, support real-time viewing of speaker fault status through mobile APP.
- * Built-in electronic frequency division, the digital bass amplifier has strong low frequency and high efficiency; the tweeter amplifier ensures soft sound quality.
- * As networked products, it is easy to expand and install with no space limitation and no need to increase equipment room management equipment.
- * Support remote firmware upgrade with no need to disassemble the machine. The firmware can be upgraded through the LAN to reduce the work intensity of maintenance personnel.

Specifications

Model	TX-8607
Network Interface	Standard RJ45 input
Transmission Rate	100Mbps
Protocol	Compatible with DHCP, TCP, UDP, ICMP, IGMP, ARP and other standard network protocols
Audio Format	MP3, WAV
Audio Mode	16-bit CD sound quality
Sampling Rate	48kHz
Output Power	Bass 2×20W, treble 2×2W
THD	≤1%
Frequency Response	70Hz~20kHz (with the local test curve)
SNR	≥75dB(A)
Operating Temperature	-10℃~+55℃
Operating Environment Humidity	20% ~ 80% relative humidity, no condensation
Power Consumption	≤60W
Protection Circuit	Overload, short circuit protection (bass)
Power Supply	~110V-240V 50Hz-60Hz
Dimensions (W×H×D)	160×240×205mm (including mesh cover)
Weight	4.2kg (main box + auxiliary box)

Control Panel

TX-8611



Description

This product is an embedded network control panel that collects external analog audio signals. It can be bound to the back-end terminal one-to-one through APP or PC software, and the collected analog audio can be encoded into digital audio and transmitted to the bound terminal via the network to play and broadcast.

Features

- * Adopt capacitive touch buttons, with good operating experience; dual embedded structure design, with corresponding fixed accessories to meet the table plug and wall plug methods.
- * Based on 3-layer network transmission technology, compatible with standard network protocols such as DHCP, TCP, UDP, ICMP, IGMP, ARP, etc.
- * Adopt 48kHz sampling rate, support DSP sound effect processing, and achieve CD-level sound quality.
- * Support mobile APP controlling the device through WiFi/3G/4G/5G and other networks, support mobile APP remotely viewing device information and device status in real time, and support mobile APP remotely setting device parameters (IP address, device name, etc.).
- * Support automatic acquisition of IP, support DHCP dynamic and static IP configuration methods.
- * With dual network interfaces, support one-to-one binding to the back-end terminal, and can perform local audio playback and volume adjustment for the bound terminal.
- * Support local audio priority function; through the local priority button, you can switch between local/network mixing and local independent playback.
- * Support one auxiliary audio source and one MIC input, can play local programs and speak offline to the bound terminal, and the delay of acquisition is less than 5ms.
- * Built-in bluetooth module, support standard bluetooth connection for audio transmission and playback.
- * As networked products, it is easy to expand and install with no space limitation and no need to increase equipment room management equipment.
- * Support remote firmware upgrade with no need to disassemble the machine. The firmware can be upgraded through the LAN to reduce the work intensity of maintenance personnel.

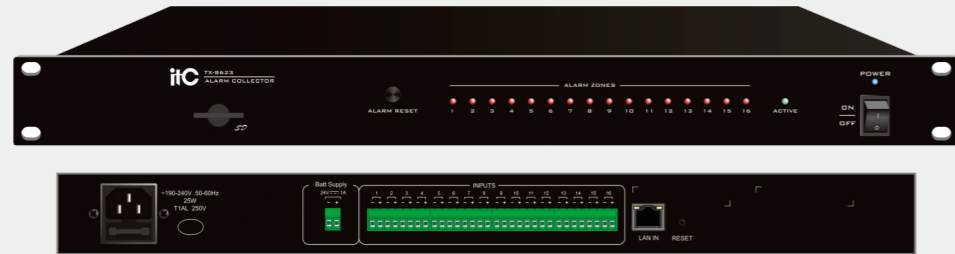
Specifications

Model	TX-8611
Network interface	Dual RJ45 network port
Transmission rate	100Mbps
Protocol	Compatible with DHCP, TCP, UDP, ICMP, IGMP, ARP and other standard network protocols
Sampling rate	48kHz
Bluetooth mode	Bluetooth 4.1
Input sensitivity	AUX: 350mV (unbalanced); MIC: 10mV
Frequency response	80Hz~16kHz, +1/-3dB
THD	≤0.1%@1kHz, AUX
SNR	≥75dB(A)
Power consumption	≤3W
Operating temperature	-10℃~+55℃
Operating humidity	20% ~ 80% relative humidity, no condensation
Power supply	DC12V~24V
Dimensions (L×W×D)	86*86*35.4mm
Weight	0.15kg

Alarm Collector

Embedded software: digital IP network platform terminal embedded software V2.02

TX-8623



Description

Using for fire service center to acquire firm alarm circuit.

Features

- * Standard rack mount design, 1U height, high-grade brushed aluminum panels, sophisticated technology, high-end product.
- * Based on layer 3 network transmission technology. Compatible with standard network protocols such as DHCP, TCP, UDP, ICMP, IGMP, ARP.
- * Support 48kHz sampling rate, DSP sound effect processing, CD-level sound quality effect.
- * Through mobile APP, it can control the device through WiFi / 3G / 4G / 5G and other networks, remote view real-time device information and device status, and remotely set device parameters (IP address, device name, etc.).
- * Support automatic IP acquisition, DHCP dynamic and static IP configuration methods.
- * Support alarm trigger mode setting through mobile APP, including single area, whole area, adjacent area+1, adjacent area+2, adjacent area+3, adjacent area+4.
- * Support alarm music playback mode setting through mobile APP, including single loop and single playback.
- * Support alarm cancel mode setting through mobile APP, including automatic cancel and manual cancel.
- * A single alarm collector supports 16-channel fire-fighting short-circuit signal input; support the expansion of multiple alarm collectors to access the system.
- * Support one key to cancel the alarm. In the alarm state, press the panel alarm reset key to cancel the alarm trigger state.
- * Support offline alarm function, which can ensure the normal triggering of alarm tasks when the controller is offline.
- * Support one-key factory reset function, which is convenient for system maintenance and management.
- * Support main and backup power supply, mains wide voltage power supply + DC24V backup power supply with zero switching time, to guarantee the 7×24 hours working of the terminal.
- * Support remote firmware upgrade with no need to disassemble the machine. The firmware can be upgraded through the LAN to reduce the work intensity of maintenance personnel.

Specifications

Model	TX-8623
Network Interface	Standard RJ45 input
Transmission Rate	100Mbps
Supporting Protocol	Compatible with DHCP, TCP, UDP, ICMP, IGMP, ARP and other standard network protocols
Short-circuit Interface	Industry standard crimping terminal
Audio Format	MP3
Audio Mode	16-bit CD sound quality
Sampling Rate	48kHz
Operating Temperature	-10℃~+55℃
Operating Humidity	20% ~ 80% relative humidity, no condensation
Power Consumption	≤25W
Working Power	~190- 240V, 50-60Hz
Product Size	484×209×45mm
Weight	2.4kg

CD Player

TX-8627



Description

The network CD player supports the playback of CD and MP3 music, which can be transmitted to the designated terminal for playback through the network, and can also be simulated and output to the local power amplifier for on-site amplification.

Features

- * Standard rack mount design, 1U height, high-grade brushed aluminum panels, sophisticated technology, high-end product.
- * Adopt imported suction digital movement, system + ESS decoding scheme, super error correction function.
- * High-brightness dynamic VFD fluorescent display, clearly display the CD status, playback status, and song playback time.
- * Support infrared remote control to control entry/exit, play/pause, stop/return, previous song and next song, loop playback mode selection, CD/USB/SD audio source input mode selection, (0~9) number key control.
- * Support three media: CD-ROM, U-disk and SD card, and support mobile APP control to switch playback media.
- * Built-in MP3 player, support reading MP3 music in USB and SD card for playback.
- * Based on layer 3 network transmission technology. Compatible with standard network protocols such as DHCP, TCP, UDP, ICMP, IGMP, ARP.
- * Support 48kHz sampling rate, DSP sound effect processing, CD-level sound quality effect.
- * Through mobile APP, it can control the device through WiFi / 3G / 4G / 5G and other networks, remote view real-time device information and device status, and remotely set device parameters (IP address, device name, etc.).
- * Support automatic IP acquisition, DHCP dynamic and static IP configuration methods.
- * Support task editing and real-time control through mobile APP, and realize background music playback on designated network terminals.
- * Support browsing the song list of CD player through mobile APP, support on-demand specific songs, and support switching play modes: order playback, list loop, single loop and single play, etc.
- * Support remote playback control through mobile phone APP to perform play, pause, stop, previous track and next track, and volume adjustment. Support dragging the music playback progress bar through mobile phone APP to realize the playback of the specified track time point.
- * Built-in broadband high-fidelity monitor speakers, full and clear sound quality, with a monitor volume adjustment knob.
- * Adopt left and right channels of the standard RCA to output local audio, which can be connected to other audio equipment such as active speakers.
- * Support remote firmware upgrade with no need to disassemble the machine. The firmware can be upgraded through the LAN to reduce the work intensity of maintenance personnel.

Specifications:

Model	TX-8627
Network Interface	Standard RJ45 input
Transmission Rate	100Mbps
Supporting Protocol	Compatible with DHCP, TCP, UDP, ICMP, IGMP, ARP and other standard network protocols
Audio Mode	16-bit CD sound quality
Sampling Rate	48kHz
Operating Temperature	0℃~+55℃
Operating Humidity	20% ~ 80% relative humidity, no condensation
Power Consumption	≤30W
Working Power	~220V 50Hz
Size	484×209×45mm
Weight	3.4kg

Tuner TX-8628



Description

The network tuner supports the playback of FM/AM radio programs, which can be transmitted to the designated terminal for playback through the network, and can also be simulated and output to the local power amplifier for on-site amplification.

Features

- * Standard cabinet design, 1U height, high-grade brushed aluminum panels, sophisticated technology, high-end product.
- * With LCD screen, clear display, light touch key operation.
- * Support FM/AM mode, FM receiving frequency: 76MHz~108MHz, AM receiving frequency: 520KHz~1708KHz.
- * Radio frequency automatic search and storage function, the storage radio station can reach 99, and there is power-off memory function.
- * Adopt the dedicated vehicle digital radio tuning module, which has the advantages of small size, good performance and strong anti-interference.
- * Support infrared remote control: FM and AM conversion, automatic and manual, automatic search function.
- * Based on layer 3 network transmission technology. Compatible with standard network protocols such as DHCP, TCP, UDP, ICMP, IGMP, ARP.
- * Support 48kHz sampling rate, DSP sound effect processing, CD-level sound quality effect.
- * Through mobile APP, it can control the device through WiFi / 3G / 4G / 5G and other networks, remote view real-time device information and device status, and remotely set device parameters (IP address, device name, etc.).
- * Support automatic IP acquisition, DHCP dynamic and static IP configuration methods.
- * Support task editing and real-time control through mobile APP, and realize radio program playback on designated network terminals.
- * Support FM/AM mode switching through mobile APP.
- * Support channel switching through mobile APP.
- * Support remote broadcast control through mobile APP to perform play, stop and volume adjustment operations.
- * Built-in broadband high-fidelity monitor speakers, full and clear sound quality, with a monitor volume adjustment knob.
- * Adopt left and right channels of the standard RCA to output local audio, which can be connected to other audio equipment such as active speakers.
- * Support remote firmware upgrade with no need to disassemble the machine. The firmware can be upgraded through the LAN to reduce the work intensity of maintenance personnel.

Specifications

Model	TX-8628
Network Interface	Standard RJ45 input
Supporting Protocol	Compatible with DHCP, TCP, UDP, ICMP, IGMP, ARP and other standard network protocols
Transmission Rate	100Mbps
Audio Mode	16-bit CD sound quality
Sampling Rate	48kHz
Power Consumption	≤10W
Power Supply	~220V/50Hz
Operating Temperature	-10℃~+55℃
Operating Humidity	20% ~ 80% relative humidity, no condensation
Size	484×209×45mm
Weight	4.5kg

Cloud Broadcast Audio Collector TX-8670



Description

It is specially designed for external analog audio signal acquisition of cloud PA system. The analog audio can be captured and encoded into digital audio, and be transmitted to designated area terminal for playback via network.

Features

- * Aluminum housing, exquisite and elegant appearance, solid structure.
- * Based on 3-layer network transmission technology, compatible with standard network protocols such as DHCP, TCP, UDP, ICMP, IGMP, ARP, etc.
- * Adopt 48kHz sampling rate and lossless collection, support the collection of wireless microphone, mixer or third-party audio sources, to meet various audio source collection requirements.
- * Through mobile APP, it can control the device through WiFi / 3G / 4G / 5G and other networks, remote view real-time device information and device status, and remotely set device parameters (IP address, device name, etc.).
- * Support automatic IP acquisition, support DHCP dynamic and static IP configuration methods.
- * Support the configuration of acquisition and broadcast parameters through mobile APP, support acquisition gain adjustment, which can adjust the corresponding acquisition gain according to the acquisition audio source.
- * Support the editing of acquisition and broadcast tasks through mobile APP, and realize the playback of collected audio sources on designated network terminals.
- * Realize end-to-end transmission with extremely low latency (5ms), and support "zero" delay broadcast for any partition.
- * Equipped with 2 groups of RCA audio input ports, with input volume adjustment, which can be flexibly adapted to a variety of different audio equipment.
- * Support remote firmware upgrade, firmware upgrade can be carried out through LAN without disassembling the machine, reducing maintenance personnel work.

Specifications

Model	TX-8670
Network Interface	Standard RJ45 input
Transmission Rate	100Mbps
Supporting Protocol	Compatible with DHCP, TCP, UDP, ICMP, IGMP, ARP and other standard network protocols
AUX Input Sensitivity	350mV (unbalanced)
Frequency Response	80Hz~16kHz +1/-3dB
THD	≤0.1%
SNR	≥75dB (A)
Operating Temperature	-10℃~+55℃
Operating Humidity	20% ~ 80% relative humidity, no condensation
Power Consumption	≤2W
Power Supply	DC 24V/1.5A
Size	132×88×26 mm
Weight	0.35kg

IP Network Terminal Amplifier
Digital IP network platform terminal embedded software V2.02
TX-86120Z



Description

Installed in the storey computer room or sub-control computer room of each broadcasting management area, the built-in high-fidelity amplifier can be used for program broadcast and local broadcast in halls, corridors, outdoors and other places.

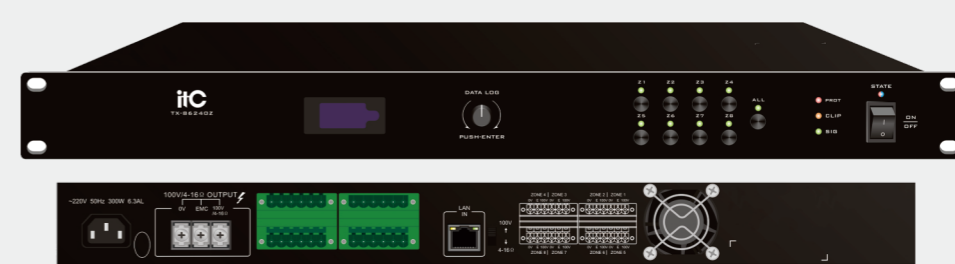
Features

- * Standard 1U cabinet design, black alumina wire-drawing panel, exquisite craft fully demonstrating high-end temperament.
- * Adopt built-in industrial-grade dedicated network audio decoding chip to realize the playback of broadcast and network music programs.
- * Built-in high-fidelity professional digital amplifier, with 120W power output of constant voltage 100V/constant resistance 4~16Ω; 8 power zoning output ports support 8-zone independent control, and support the playback of broadcast and network music programs in any zone or whole zones.
- * Based on 3-layer network transmission technology, compatible with standard network protocols such as DHCP, TCP, UDP, ICMP, IGMP, ARP, etc.
- * Adopt 48kHz sampling rate, support DSP sound effect processing, and achieve CD-level sound quality.
- * Support mobile APP controlling the device through WiFi/3G/4G/5G and other networks, support mobile APP remotely viewing device information and device status in real time, and support mobile APP remotely setting device parameters (IP address, device name, etc.).
- * Support automatic acquisition of IP, support DHCP dynamic and static IP configuration methods.
- * Support remote volume configuration through the mobile APP, support batch volume copy function, and realize batch volume configuration of multiple devices.
- * Support remote tone adjustment through the mobile APP, and support adjusting better sound quality according to application requirements.
- * Support failure/overload/over-temperature/short circuit detection function of the amplifier, and support checking the amplifier failure through the mobile APP.
- * Support zoning failure detection function in constant voltage mode; the screen can display whether there are failures in the 8 zones.
- * The full-service sound mixing function supports the digital mixing of broadcast services and network background music, to meet the sound mixing and sound reinforcement applications of various activities such as school broadcast gymnastics, flag raising, sports meetings, community park broadcasts and background music mixing.
- * Support three-wire sound control override. The constant voltage 100V output in each zone of the amplifier supports the function of three-wire sound control and override output. No need for a override power supply. It is also compatible with four-wire fire fighting and requires an external 24V override power supply.
- * Intelligent power saving and pre-open management can automatically cut off the power of the amplifier when it is idle, and automatically turn on when there is a signal, to achieve system energy saving and stable operation of the devices.
- * It has 8 shortcut keys, which can quickly open/close the corresponding zones; it has a multi-function encoder knob for volume adjustment, tone adjustment, and other operations.
- * Support remote firmware upgrade through the LAN, no need to disassemble the machine, and reducing the work intensity of maintenance personnel.

Specifications

Model	TX-86120Z
Network Interface	Standard RJ45 input
Transmission Rate	100Mbps
Communication Protocol	Compatible with standard network protocols such as DHCP, TCP, UDP, ICMP, IGMP, ARP, etc.
Output Power	120W
Output Method	Constant voltage 100V/constant resistance 4~16Ω
Audio Format	MP3, WAV
Audio Mode	16-bit CD sound quality
Sampling Rate	48kHz
Treble Boost and Attenuation	±10dB
Bass Boost and Attenuation	±10dB
Frequency Response	80Hz~16kHz +1/-3dB
THD	≤1%
SNR	≥75dB (A)
Standby Power Consumption	≤10W
Power Consumption	160W
Power Supply	~AC 180V-240V 50Hz
Protection Circuit	DC output, overload, over temperature, short circuit protection circuit
Working Temperature	-10℃~+55℃
Working Humidity	20%~80% relative humidity, no condensation
Size	484×315×44mm
Weight	4.5kg

IP Network Terminal Amplifier
Digital IP network platform terminal embedded software V2.02
TX-86240Z



Description

Installed in the storey computer room or sub-control computer room of each broadcasting management area, the built-in high-fidelity amplifier can be used for program broadcast and local broadcast in halls, corridors, outdoors and other places.

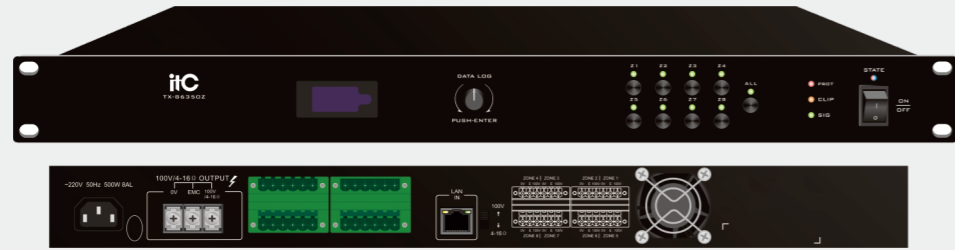
Features

- * Standard 1U cabinet design, black alumina wire-drawing panel, exquisite craft fully demonstrating high-end temperament.
- * Adopt built-in industrial-grade dedicated network audio decoding chip to realize the playback of broadcast and network music programs.
- * Built-in high-fidelity professional digital amplifier, with 240W power output of constant voltage 100V/constant resistance 4~16Ω; 8 power zoning output ports support 8-zone independent control, and support the playback of broadcast and network music programs in any zone or whole zones.
- * Based on 3-layer network transmission technology, compatible with standard network protocols such as DHCP, TCP, UDP, ICMP, IGMP, ARP, etc.
- * Adopt 48kHz sampling rate, support DSP sound effect processing, and achieve CD-level sound quality.
- * Support mobile APP controlling the device through WiFi/3G/4G/5G and other networks, support mobile APP remotely viewing device information and device status in real time, and support mobile APP remotely setting device parameters (IP address, device name, etc.).
- * Support automatic acquisition of IP, support DHCP dynamic and static IP configuration methods.
- * Support remote volume configuration through the mobile APP, support batch volume copy function, and realize batch volume configuration of multiple devices.
- * Support remote tone adjustment through the mobile APP, and support adjusting better sound quality according to application requirements.
- * Support failure/overload/over-temperature/short circuit detection function of the amplifier, and support checking the amplifier failure through the mobile APP.
- * Support zoning failure detection function in constant voltage mode; the screen can display whether there are failures in the 8 zones.
- * The full-service sound mixing function supports the digital mixing of broadcast services and network background music, to meet the sound mixing and sound reinforcement applications of various activities such as school broadcast gymnastics, flag raising, sports meetings, community park broadcasts and background music mixing.
- * Support three-wire sound control override. The constant voltage 100V output in each zone of the amplifier supports the function of three-wire sound control and override output. No need for a override power supply. It is also compatible with four-wire fire fighting and requires an external 24V override power supply.
- * Intelligent power saving and pre-open management can automatically cut off the power of the amplifier when it is idle, and automatically turn on when there is a signal, to achieve system energy saving and stable operation of the devices.
- * It has 8 shortcut keys, which can quickly open/close the corresponding zones; it has a multi-function encoder knob for volume adjustment, tone adjustment, and other operations.
- * Support remote firmware upgrade through the LAN, no need to disassemble the machine, and reducing the work intensity of maintenance personnel.

Specifications

Model	TX-86240Z
Network Interface	Standard RJ45 input
Transmission Rate	100Mbps
Communication Protocol	Compatible with standard network protocols such as DHCP, TCP, UDP, ICMP, IGMP, ARP, etc.
Output Power	240W
Output Method	Constant voltage 100V/constant resistance 4~16Ω
Audio Format	MP3, WAV
Audio Mode	16-bit CD sound quality
Sampling Rate	48kHz
Treble Boost and Attenuation	±10dB
Bass Boost and Attenuation	±10dB
Frequency Response	80Hz~16kHz +1/-3dB
THD	≤1%
SNR	≥75dB (A)
Standby Power Consumption	≤10W
Power Consumption	300W
Power Supply	~AC 180V-240V 50Hz
Protection Circuit	DC output, overload, over temperature, short circuit protection circuit
Working Temperature	-10℃~+55℃
Working Humidity	20%~80% relative humidity, no condensation
Size	484×315×44mm
Weight	5.1kg

IP Network Terminal Amplifier Digital IP network platform terminal embedded software V2.02 TX-86350Z



Description

Installed in the storey computer room or sub-control computer room of each broadcasting management area, the built-in high-fidelity amplifier can be used for program broadcast and local broadcast in halls, corridors, outdoors and other places.

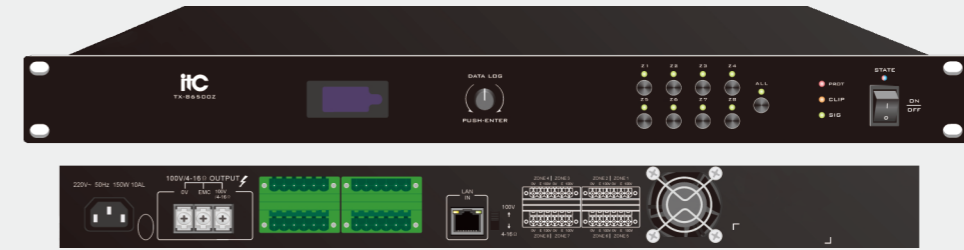
Features

- * Standard 1U cabinet design, black alumina wire-drawing panel, exquisite craft fully demonstrating high-end temperament.
- * Adopt built-in industrial-grade dedicated network audio decoding chip to realize the playback of broadcast and network music programs.
- * Built-in high-fidelity professional digital amplifier, with 350W power output of constant voltage 100V/constant resistance 4~16Ω; 8 power zoning output ports support 8-zone independent control, and support the playback of broadcast and network music programs in any zone or whole zones.
- * Based on 3-layer network transmission technology, compatible with standard network protocols such as DHCP, TCP, UDP, ICMP, IGMP, ARP, etc.
- * Adopt 48kHz sampling rate, support DSP sound effect processing, and achieve CD-level sound quality.
- * Support mobile APP controlling the device through WiFi/3G/4G/5G and other networks, support mobile APP remotely viewing device information and device status in real time, and support mobile APP remotely setting device parameters (IP address, device name, etc.).
- * Support automatic acquisition of IP, support DHCP dynamic and static IP configuration methods.
- * Support remote volume configuration through the mobile APP, support batch volume copy function, and realize batch volume configuration of multiple devices.
- * Support remote tone adjustment through the mobile APP, and support adjusting better sound quality according to application requirements.
- * Support failure/overload/over-temperature/short circuit detection function of the amplifier, and support checking the amplifier failure through the mobile APP.
- * Support zoning failure detection function in constant voltage mode; the screen can display whether there are failures in the 8 zones.
- * The full-service sound mixing function supports the digital mixing of broadcast services and network background music, to meet the sound mixing and sound reinforcement applications of various activities such as school broadcast gymnastics, flag raising, sports meetings, community park broadcasts and background music mixing.
- * Support three-wire sound control override. The constant voltage 100V output in each zone of the amplifier supports the function of three-wire sound control and override output. No need for a override power supply. It is also compatible with four-wire fire fighting and requires an external 24V override power supply.
- * Intelligent power saving and pre-open management can automatically cut off the power of the amplifier when it is idle, and automatically turn on when there is a signal, to achieve system energy saving and stable operation of the devices.
- * It has 8 shortcut keys, which can quickly open/close the corresponding zones; it has a multi-function encoder knob for volume adjustment, tone adjustment, and other operations.
- * Support remote firmware upgrade through the LAN, no need to disassemble the machine, and reducing the work intensity of maintenance personnel.

Specifications

Model	TX-86350Z
Network Interface	Standard RJ45 input
Transmission Rate	100Mbps
Communication Protocol	Compatible with standard network protocols such as DHCP, TCP, UDP, ICMP, IGMP, ARP, etc.
Output Power	350W
Output Method	Constant voltage 100V/constant resistance 4~16Ω
Audio Format	MP3, WAV
Audio Mode	16-bit CD sound quality
Sampling Rate	48kHz
Treble Boost and Attenuation	±10dB
Bass Boost and Attenuation	±10dB
Frequency Response	80Hz~16kHz +1/-3dB
THD	≤1%
SNR	≥75dB (A)
Standby Power Consumption	≤10W
Power Consumption	500W
Power Supply	~AC 180V-240V 50Hz
Protection Circuit	DC output, overload, over temperature, short circuit protection circuit
Working Temperature	-10℃~+55℃
Working Humidity	20%~80% relative humidity, no condensation
Size	484×315×44mm
Weight	5.4kg

IP Network Terminal Amplifier Digital IP network platform terminal embedded software V2.02 TX-86500Z



Description

Installed in the storey computer room or sub-control computer room of each broadcasting management area, the built-in high-fidelity amplifier can be used for program broadcast and local broadcast in halls, corridors, outdoors and other places.

Features

- * Standard 1U cabinet design, black alumina wire-drawing panel, exquisite craft fully demonstrating high-end temperament.
- * Adopt built-in industrial-grade dedicated network audio decoding chip to realize the playback of broadcast and network music programs.
- * Built-in high-fidelity professional digital amplifier, with 500W power output of constant voltage 100V/constant resistance 4~16Ω; 8 power zoning output ports support 8-zone independent control, and support the playback of broadcast and network music programs in any zone or whole zones.
- * Based on 3-layer network transmission technology, compatible with standard network protocols such as DHCP, TCP, UDP, ICMP, IGMP, ARP, etc.
- * Adopt 48kHz sampling rate, support DSP sound effect processing, and achieve CD-level sound quality.
- * Support mobile APP controlling the device through WiFi/3G/4G/5G and other networks, support mobile APP remotely viewing device information and device status in real time, and support mobile APP remotely setting device parameters (IP address, device name, etc.).
- * Support automatic acquisition of IP, support DHCP dynamic and static IP configuration methods.
- * Support remote volume configuration through the mobile APP, support batch volume copy function, and realize batch volume configuration of multiple devices.
- * Support remote tone adjustment through the mobile APP, and support adjusting better sound quality according to application requirements.
- * Support failure/overload/over-temperature/short circuit detection function of the amplifier, and support checking the amplifier failure through the mobile APP.
- * Support zoning failure detection function in constant voltage mode; the screen can display whether there are failures in the 8 zones.
- * The full-service sound mixing function supports the digital mixing of broadcast services and network background music, to meet the sound mixing and sound reinforcement applications of various activities such as school broadcast gymnastics, flag raising, sports meetings, community park broadcasts and background music mixing.
- * Support three-wire sound control override. The constant voltage 100V output in each zone of the amplifier supports the function of three-wire sound control and override output. No need for a override power supply. It is also compatible with four-wire fire fighting and requires an external 24V override power supply.
- * Intelligent power saving and pre-open management can automatically cut off the power of the amplifier when it is idle, and automatically turn on when there is a signal, to achieve system energy saving and stable operation of the devices.
- * It has 8 shortcut keys, which can quickly open/close the corresponding zones; it has a multi-function encoder knob for volume adjustment, tone adjustment, and other operations.
- * Support remote firmware upgrade through the LAN, no need to disassemble the machine, and reducing the work intensity of maintenance personnel.

Specifications

Model	TX-86500Z
Network Interface	Standard RJ45 input
Transmission Rate	100Mbps
Communication Protocol	Compatible with standard network protocols such as DHCP, TCP, UDP, ICMP, IGMP, ARP, etc.
Output Power	500W
Output Method	Constant voltage 100V/constant resistance 4~16Ω
Audio Format	MP3, WAV
Audio Mode	16-bit CD sound quality
Sampling Rate	48kHz
Treble Boost and Attenuation	±10dB
Bass Boost and Attenuation	±10dB
Frequency Response	80Hz~16kHz +1/-3dB
THD	≤1%
SNR	≥75dB (A)
Standby Power Consumption	≤10W
Power Consumption	650W
Power Supply	~AC 180V-240V 50Hz
Protection Circuit	DC output, overload, over temperature, short circuit protection circuit
Working Temperature	-10℃~+55℃
Working Humidity	20%~80% relative humidity, no condensation
Size	484×315×44mm
Weight	5.6kg