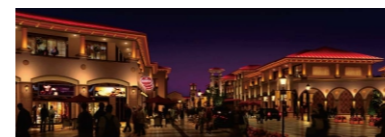




## LED Flood Light TL-LH3653 >>>



### Features



- \* Unique appearance design, simple and natural shape.
- \* High-conductivity aluminum radiator, ventilation and convection design, smaller fixture and the larger power.
- \* Equipped with imported light source, high luminous flux output, good light color consistency, temperature resistance, high transparency; flame retardant optical lens can be equipped with built-in honeycomb anti-glare grille.
- \* Glue-free waterproof design.
- \* Single color/RGB/RGBW four-in-one. It supports DMX512 control system. Simple wiring makes the installation and maintenance of lights more convenient and faster.
- \* Good electromagnetic compatibility, no electromagnetic interference to the surrounding environment.
- \* Built-in constant current driving circuit, allowing it to maintain efficient illumination. It operates stably over a wide voltage range, improving surge protection capability and avoiding flickering of the lights caused by changes in the external power supply voltage. During the process of connecting the lights in series, it ensures consistent brightness between the first and last light fixtures.

| Product Specification   |                              |
|-------------------------|------------------------------|
| Input voltage/power     | DC24V/18W                    |
| Light source            | Sanan/6PCS                   |
| Beam angle              | 15° (30°, 45°, 60° optional) |
| Color temperature       | RGB                          |
| Light effect            | ≥50lm/W                      |
| Color rendering index   | Ra≥70                        |
| Color tolerance         | SDCM≤5                       |
| Light source life       | 50000H                       |
| Control mode            | DMX512                       |
| IK level                | Ik08                         |
| IP level                | Ip65                         |
| Shell material          | aluminum + tempered glass    |
| Appearance color        | sand gray                    |
| Installation method     | fixed by bracket screws      |
| Product size            | D110*119*153mm               |
| Packing size            | 415*340*285mm                |
| Net weight/gross weight | 1.2kg/17kg(12PCS)            |
| Remarks                 | light shield optional        |

## LED Underwater Light TL-LH6115 >>>



### Features



- \* Reasonable heat dissipation design enables the heat of the LED to be quickly conducted through the light structure and ensures its luminous efficiency and service lifespan;
- \* The flat glass and stainless steel surface cover are perfectly seamless to avoid dust deposits;
- \* The low-gradient surface cover allows pedestrians to walk without obstacles and prevents them from falling;
- \* 6063 aviation aluminum extrusion fixture, surface electrostatic spraying treatment, 316 wire-drawing stainless steel surface cover, and ADC12 die-casting aluminum rear cover;
- \* 10mm ultra-white tempered glass, with seismic and impact protection grade of IK10, and strong load-bearing capacity.

| Product Specification                 |  |                |                |
|---------------------------------------|--|----------------|----------------|
| Model                                 | TL-LH6115                                | TL-LH6116      | TL-LH6117      |
| Input voltage/power                   | DC24V/50Hz/18W                           | DC24V/50Hz/24W | DC24V/50Hz/36W |
| Number of LED lamp bead/ light source | Philips/18PCS                            | Philips/24PCS  | Philips/36PCS  |
| Beam angle                            | 15° (30, 45, 60° optional)               |                |                |
| Color temperature                     | 3000K (1900, 2100, 4000, 5700K optional) |                |                |
| Control method                        | /  |                |                |
| Installation method                   | Embedded                                 |                |                |
| IP level                              | Ip67                                     |                |                |
| Fixture size (L×W×H)                  | D200×120mm                               | D260×121mm     | D320×103mm     |
| Certificate                           | CE/ROHS                                  |                |                |

LIGHT THE WORLD  
ILLUMINATE THE FUTURE



# LED LIGHTING

Technology Creates A Better Life



### Product Description

- LED Wall Washer
- LED Street Light
- LED Point Light Source
- LED Flood Light
- LED strip light
- LED corrugated light



**Free match**  
Free to add accessories



**Independent research and development**  
Independent mold development and production



**Safe and secure**  
Built-in constant current drive



**Structural waterproof**  
Integrated structural design



**Professional technology**  
Imported high-efficiency chip



**Special protection**  
Outdoor lightning protection and anti-static



Guangdong BaoLunElectronicsCo.,Ltd(LeadingAudiovisualandLightingSystemManufacturer)  
Factory Add: No. 56 Nanli East Road Shiqi Town, Panyu District, Guangzhou  
Headquarter Add: BuildingNo.A13-1YikuIndustrialPark,TheHills,Dongyi Road,PanyuDistrict,GuangzhouChina  
Website: www.itclighting.com info@itc-pa.com.cn

www.itclighting.com

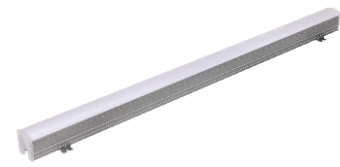
info@itc-pa.com.cn

www.itctech.com.cn

## Related Products <<<



TL-LH4101  
LED POINT LIGHT SOURCE



TL-LH2301  
LED LINEAR LIGHT



TL-LH2406



TL-LH5407  
WALKWAY LIGHT



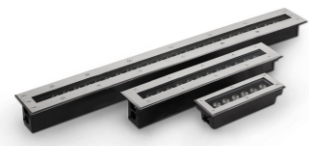
TL-LH1010  
LED WALL WASHER



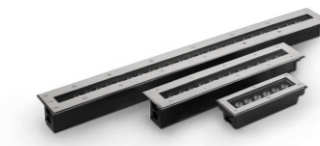
TL-LH1806



TL-LH5101  
LED UNDERWATER LIGHT



TL-LH6104  
LED UNDERGROUND LIGHT



TL-LH6101



TL-LH5203  
LED CORRUGATED LIGHT



TL-LH3101  
LED FLOOD LIGHT



TL-LH3655



TL-LH7201

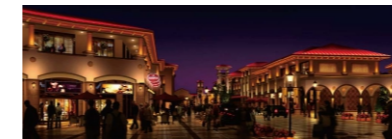


TL-LH7206  
LED GARDEN LIGHT



TL-LH7205

## LED Linear Light TL-LH2401 >>>



### Features



- \*Unique structure, simple and beautiful appearance, waterproof design with full sealant potting, and protection level of Ip65;
- \*6063 aluminum alloy fixture, SUS304 stainless steel screw, multiple installation methods, surface electrostatic spraying paint, strong corrosion resistance, making it suitable for harsh outdoor environments;
- \*The integration of monochromatic/RGB/RGBW supports DMX512 control system; concise wiring makes the fixture installation and maintenance more convenient;
- \*Built-in constant current driving circuit, allowing it to maintain efficient illumination. It operates stably over a wide voltage range, improving surge protection capability and avoiding flickering of the lights caused by changes in the external power supply voltage. During the process of connecting the lights in series, it ensures consistent brightness between the first and last light fixtures.

| Product Specification   |   |
|-------------------------|---|
| Input voltage/power     | DC24V/12W                                     |
| Light source            | OSRAM/48PCS                                   |
| Beam angle              | 120°  |
| Color temperature       | 3000K (1900K, 2100K, 4000K, 5700K optional)   |
| Light effect            | ≥80lm/W                                       |
| Color rendering index   | Ra≥80   |
| Color tolerance         | SDCM≤5  |
| Light source life       | 50000H  |
| Control method          | ON/OFF  |
| IK Class                | Ik08  |
| IP Class                | Ip65  |
| Shell material          | Aluminum + tempered glass                     |
| Shell color             | Sand gray                                     |
| Installation method     | Fixed (optional embedded buckle installation) |
| Product size (L×W×H)    | 1000*28*40mm                                  |
| Packaging size (L×W×H)  | 1070*330*220mm                                |
| Net weight/Gross weight | 0.9kg/12.6kg(12PCS)                           |
| Remark                  | Light baffle optional                         |

## LED Wall Washer TL-LH1101 >>>



### Features



- \*Simple appearance design, economical and practical structure;
- \*The fixture has high luminous uniformity and brightness;
- \*The light projection angle and position are adjustable, making it always in the best state for the most satisfactory lighting effects.
- \*Built-in constant current driving circuit, allowing it to maintain efficient illumination. It operates stably over a wide voltage range, improving surge protection capability and avoiding flickering of the lights caused by changes in the external power supply voltage. During the process of connecting the lights in series, it ensures consistent brightness between the first and last light fixtures.

| Product Specification   |  |
|-------------------------|--|
| Input voltage/power     | DC24V/24W  |
| Light source            | LUMILEDS/24PCS                                   |
| Beam angle              | 30° (45°, 60°, 20*45° optional)                  |
| Color temperature       | 3000K (1900K, 2100K, 4000K, 5700K optional)      |
| Light effect            | >80lm/W  |
| Color rendering index   | Ra≥80  |
| Color tolerance         | SDCM≤5   |
| Light source life       | 50000H   |
| Control method          | ON/OFF   |
| IK Class                | Ik08   |
| IP Class                | Ip67   |
| Shell material          | Aluminum + tempered glass                        |
| Shell color             | Sand gray  |
| Installation method     | Bracket screws                                   |
| Product size (L×W×H)    | 1000*34*69mm                                     |
| Packaging size (L×W×H)  | 1070*310*200mm                                   |
| Net weight/Gross weight | 0.9KG/15.5.KG0.9KG/15.5.KG((15PCS/box)15PCS/box) |
| Remark                  | Light baffle optional                            |

## LED Point Light TL-LH4101 >>>



### Features



- \*Original appearance design, simple overall appearance, angular, exquisite and beautiful, structural waterproof design, waterproof grade Ip65;
- \*High grayscale, high refresh, flicker-free and color design;
- \*Uniform and soft luminescence, no dark areas.
- \*Built-in constant current driving circuit, allowing it to maintain efficient illumination. It operates stably over a wide voltage range, improving surge protection capability and avoiding flickering of the lights caused by changes in the external power supply voltage. During the process of connecting the lights in series, it ensures consistent brightness between the first and last light fixtures.

| Product Specification   |   |
|-------------------------|---|
| Input voltage/power     | DC24V/3W                                    |
| Light source            | EPistar/12PCS                               |
| Beam angle              | 120°  |
| Color temperature       | 3000K (1900K, 2100K, 4000K, 5700K optional) |
| Light effect            | ≥70lm/W                                     |
| Color rendering index   | Ra≥80                                       |
| Color tolerance         | SDCM≤5                                      |
| Light source life       | 50000H                                      |
| Control mode            | ON/OFF                                      |
| IK level                | Ik08  |
| IP level                | Ip65  |
| Shell material          | Aluminum + white PC cover                   |
| Appearance color        | sand gray                                   |
| Installation method     | Screw fixed                                 |
| Product size            | 122*94*54mm                                 |
| Packing size            | 535*405*255mm                               |
| Net weight/gross weight | 0.3kg/16kg(48PCS)                           |